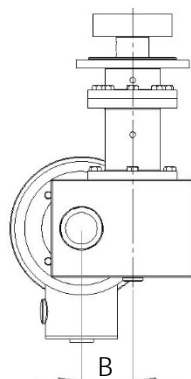
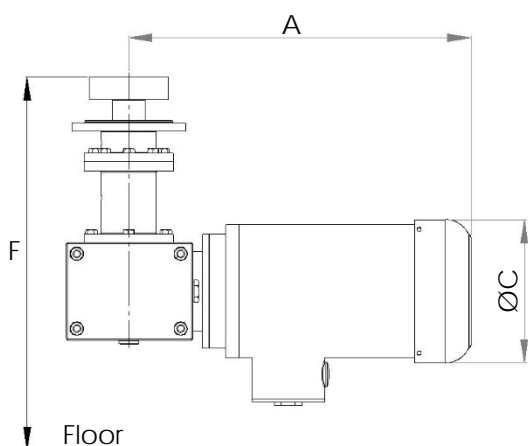


Metenova Mixer ZG8 Drive Unit SS



Option 1: RPM Sensor, Mix Head

Option 2: RPM Sensor, Shaft reading

Option 3: Lowering Device



| Part # | Description | |
|-----------------------|---|----------|
| ZG53502-S00431 | ZG8 Drive Unit AC E100 SS Motor & Gear Box | |
| ZG00014-03083 | RPM Sensor, Mix Head | Option 1 |
| ZG00014-03193 | RPM Sensor, Shaft | Option 2 |
| ZG53502-02009 | ZG8 Lowering Device E100 | Option 3 |

| A mm (in) | B mm (in) | ØC mm (in) | F mm (in) | Weight kg (lb) |
|-------------|-----------|------------|------------|----------------|
| 421 (16.57) | 63 (2.48) | 176 (6.93) | 500 (19.7) | 41 (91) |

Motor: 1.5 kW/ 2.04 hp @ 50 Hz / 1.8 kW/ 2.44 hp @ 60 Hz (2-pole - 10:1 Gear Box)
 Voltage: Δ230 / Y400 VAC @ 50Hz / Y460 VAC @ 60Hz (±5%)
 Current: 5.45A @ 230V/50Hz - 3.15A @ 400V/50Hz - 2.80A @ 460V/60Hz (±5%)
 Efficiency Performance Class: IE3
 Thermistors: 2
 Certified: CE / UL
 Protection class: IP 66
 Environment temp: 0°C - 40°C (32°F - 104°F)
 Min - Max rpm: 34 - 343
 Enclosure: Stainless Steel
 Gear box oil: Food grade in compliance with FDA



- VFD with soft start must be used when operating the mixer.
- Items are individually packed and for traceability purposes marked with item & id no.
- Metenova Quality Assurance System ensures the quality and traceability at all stages of the process.

Option 1: RPM Sensor, Mix Head

Pulses/turn: 1
 Output function: 3-wire, NO contact PNP
 Indicator: Yellow LED
 Temperature range: -25°C-70°C (-13°F-158°F)
 Operating voltage: 10..65 VDC
 Protection class: IP67

Option 2: RPM Sensor, Shaft

Pulses/turn: 4
 Output function: 4-wire, NO/NC contacts PNP
 Indicator: Yellow LED
 Temperature range: -25°C-70°C (-13°F-158°F)
 Operating voltage: 10..30 V
 Protection class: IP67

Option 3: Lowering Device

Allows preventative maintenance of Mix Head and Male Post without having to remove the Drive Unit from the tank.