

# CLIMB BLUE

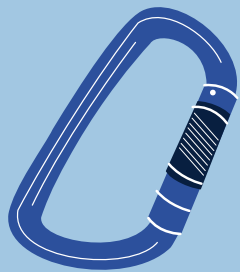
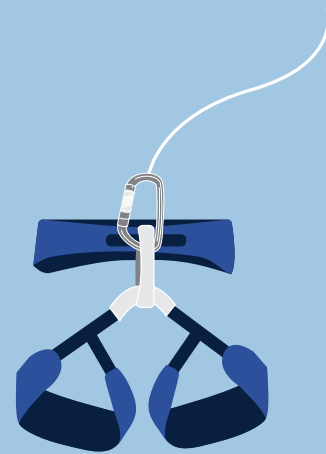
## AUTO BELAY PRE-CLIMB SAFETY CHECK

### BEFORE YOUR SESSION...

- Double check harness for damage and wear
- Make sure buckles are fastened correctly

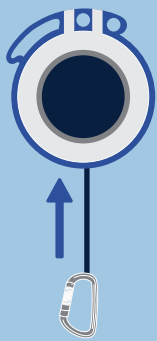
### **B**ELAY ON

Clip the carabiner to your belay loop



### **L**OCKED CARABINER

Make sure the 'biner gate is locked

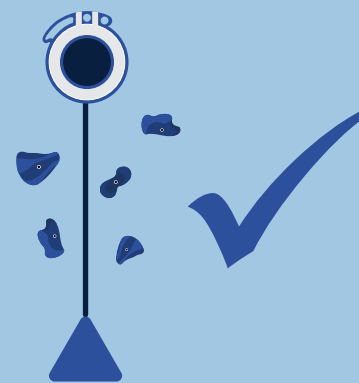


### **U**PWARD RETRACTION

Give the webbing a tug, check that it moves up when released

### **E**VERY CLIMB

Safety check every time you clip in



### ON YOUR WAY DOWN...

- Check for climbers below
- Never climb above the auto belay
- Avoid a swing— let go near the auto belay