

Light Oil Skimmer LSC W/MaxiBagger, Star board - 651308



The LSC W/MaxiBagger is a flexible and cost effective way of improving oil spill recovery. Mounted on a small vessel, the MaxiBagger is ideal for oil spill response operations in ports, marinas, rivers and other narrow channels. Larger vessels equipped with MaxiBagger can also operate on lakes and coastal areas.

It is ideal solution for organisations that are responsible for oil spill response and wish to enhance their OSR by utilising their existing vessel fleets.

The detachable LSC W/MaxiBagger enables the conversion of practically any vessel into an oil spill response

vessel at reasonable costs without major investments in machinery or equipment. Any vessel, even a small boat, where the tailor made attachment part can be fitted, can thus turn into an oil recovery vessel.

Utilizing the patented brush-comb solution, the MaxiBagger collects both heavy and light oils, even diesel, extremely efficiently minimizing the amount of water in the collected oil. The high quality bristles are easy to maintain and can be cleaned fast and easily with hot steam at up to +160°C (320°F).

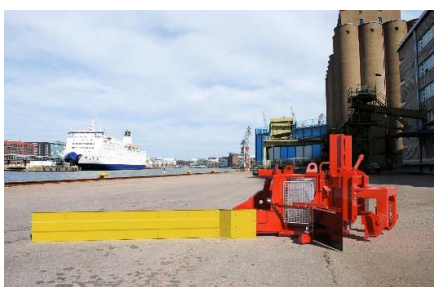
The unit consists of a detachable side unit, winch for lifting and lowering, brush cartridge, brush drum and float arm to be lowered onto the water surface. The robust floating sweeping arm made of aluminum ensures the MaxiBagger's functionality at rough seas.

The OPTIONAL oil bagging system replaces the need of fixed tanks. Please refer to item ID 400741.

The LSC W/MaxiBagger is stored onshore when not needed. When required for oil spill response operations, it is easy and fast to mount on a vessel.

The whole skimmer system is delivered tailor-made to each customer. Additionally are only needed OPTIONAL Power unit and Oil Bagging system frame. Hydraulic and oil transfer hoses for all elements are offered to fit the best way to each work boat.

Attachment parts (ID 400766) needs to be added to each delivery and will be tailor made to fit to the boat.





The specification in the table below is for a single side system.

TECHNICAL SPECIFICATIONS

Sweeping width	3,2 m	10.5 ft
Total dry weight	ca. 250 kg	ca. 550 lbs
Capacity – Heavy oil	38 m ³ /h	167 gpm
Capacity – Light oil	25 m ³ /h	110 gpm
Recovery speed	0,5-1,5 m/s	1-3 kn
Hydraulic flow (skimmer)	5 l/min	1.3 gpm
Hydraulic pressure	70 bar	1,015 PSI
Power requirement	8 kW	10.7 hp

FEATURES AND BENEFITS

- Increases the value and utilization rate of work vessels
- Takes oil spill response preparedness to a new level
- Manual winch for skimmer adjustment
- Interchangeable scraper for light and heavy oils.
- Removable debris screen
- Brush temperature range -50...+160°C (-58...+320°F)
- Hydraulic connectors AISI 316