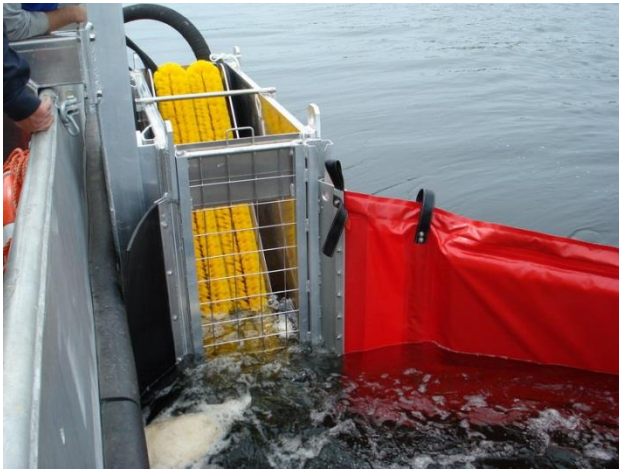


01C Skimmers - Vessel mounted

Side Collector LSC 2C/1500 - 206925



The Lamor Side Collector (LSC-C) is based upon the proven stiff brush oil recovery technology, offers high performance and safety for offshore oil spill recovery operations. The LSC-C is supplied with an outrigger and sweeping boom, which deflect oil and debris from a wide area into the side box for processing. The LSC systems are designed to be used with GTA or MSP pumps.

The LSC-C operates effectively at vessel speeds up to 4 knots, which results in excellent vessel maneuverability and a very high oil encounter rate.

The unique Side Collector design processes surface water and oil through the brush system for recovery while water pressure is relieved through the back of the cassette.

The LSC-C is designed as a chain brush conveyor oil recovery system and the number of brush rows is selected based on vessel size and required capacity. The chain brush conveyor system is deployed to recover high viscosity oils, tar balls, etc and can be used when large amounts of floating debris is present, while recovering very little water.

The LSC-C can operate in adverse weather and sea conditions without losing its performance. LSC-C has been designed with quick and efficient deployment in mind as well as being simple to operate for a small crew.

The LSC system can be fitted in various types and sizes of vessels allowing them to serve as oil recovery units. The LSC system can be installed in new-buildings as well as in existing vessels. Detailed drawings and design of the system are tailor-made for each individual vessel for optimized efficiency, operation and safety, taking into account vessel particulars, capacity requirements and other factors.

Please note that the specifications shown below are examples for a single side system including the cassette only.



TECHNICAL SPECIFICATIONS

Parameter/Type	2C	3C	4C	5C	
Length	1500	1500-2000	1800 – 2300	3000-3500	mm
Width	500	835	1000	1400	mm
Height	1700	1700	1900	2800-3500	mm
Weight min	350	350	450	850	kg
Design Capacity	40	60	80	150	m ³ /h
Name plate capacity	82	123	164	205	m ³ /h
Recovery speed	1 – 4				knots
Hydraulic flow (skimmer only)	10-19				l/min
Hydraulic pressure	100-200		150 – 200		bar
Power requirement	2.5	4	3	7.5	kW
Hydraulic conn. for skimmer	TEMA 3800				
Suitable pumps	GTA 20-70, MSP 100		GTA 50-140, MSP 150		

Example Scope of Supply

- LSC



- Frame
- Winch
- GT A Pump
- Hydraulic hoses (skimmer and pump)
- Oil transfer hose
- Jib rigging arm (manual/automatic)
- Lifting sling for jib, frame, LSC
- Sweep boom (foam/air filled)
- Sweep boom winder
- Lamor power-pack (depending on LSC/pump)
- Flat Rack
- Air blower
- Tow line for sweep
- Accessories