



01C Skimmers - Vessel mounted

Stiff Sweep Arm for 5C LSS 5 m - 591487



The Lamor Stiff Sweeping Arm incorporates both the proven stiff brush oil recovery technology and optionally also a weir skimmer as exchangeable modules. The design offers high performance and safety for offshore oil spill recovery operations.

The proven LAMOR Stiff Brush Skimmer is a removable recovery system for oil spills on the water surface. It is in use in more than 700 delivered Lamor advancing skimming systems (like the built-in recovery systems, Side Collector systems, Catamaran recovery systems and Bow Collectors).

The LSS 5 m long skimmer can be installed in a 20 ft flat rack base together with crane for deployment (recommended FassiacFM 0.22, Item 401357), Hydraulic Power Pack and other accessories.

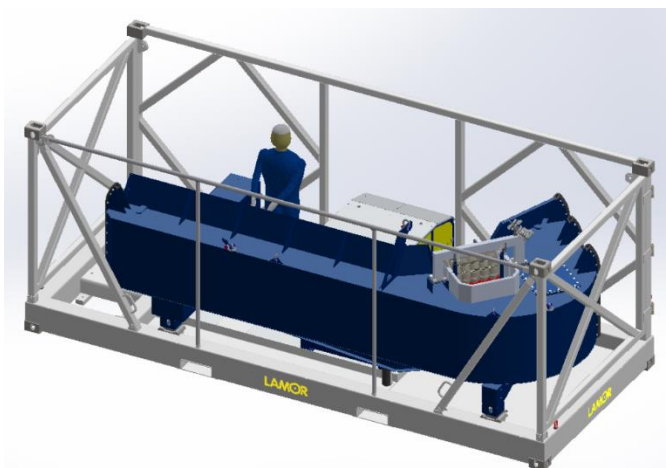
With the LAMOR Stiff sweep arm deployed, the entire vessel becomes an "oil slick processing system". The forward motion of the vessel deflects surface water and oil from the collection area formed by the sweeping arm and vessel hull. The flow leads the oil to the collection module, which is equipped by either LAMOR brush skimmer or a weir type skimmer and the oil transfer pump.

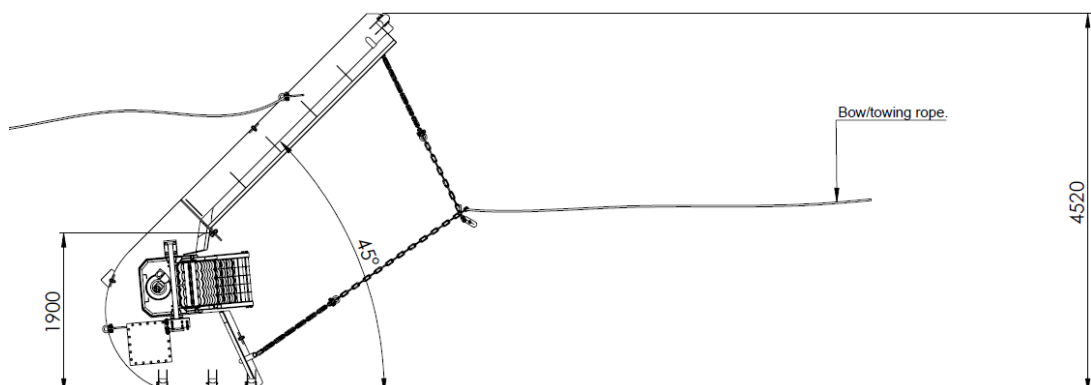
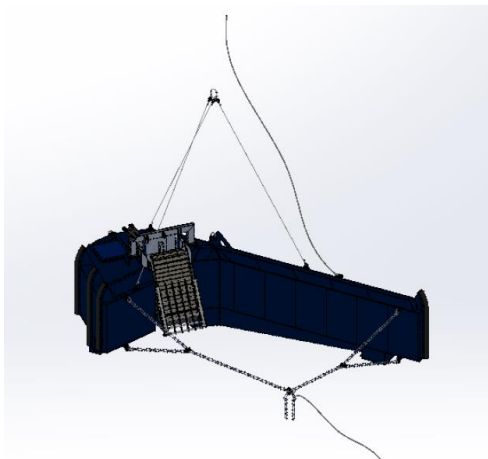
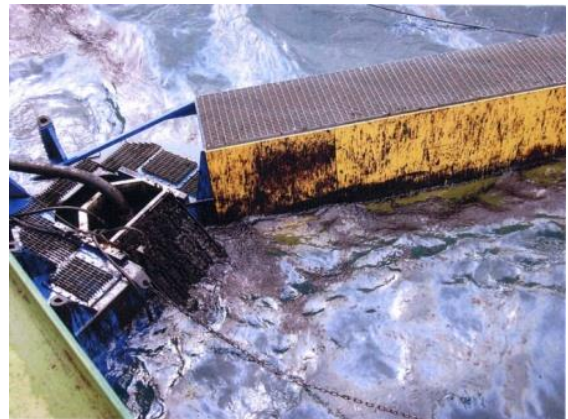
The superior advantage of the brush assisted stiff sweep system is that the brush skimmer separates the oil from the flow and compared to the weir type stiff sweep arrangement, which typically collects approx. 90 % water in waves, the free water content with the brush conveyor can be limited to less than 10 %.

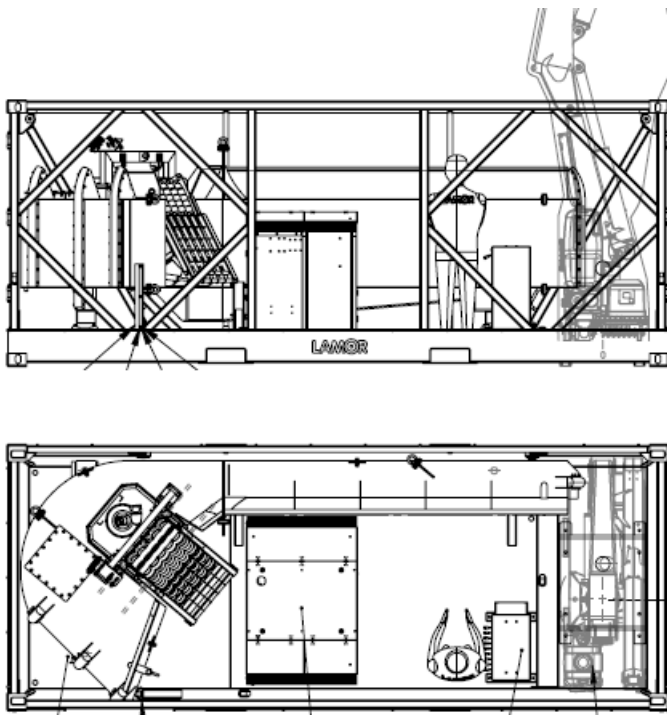
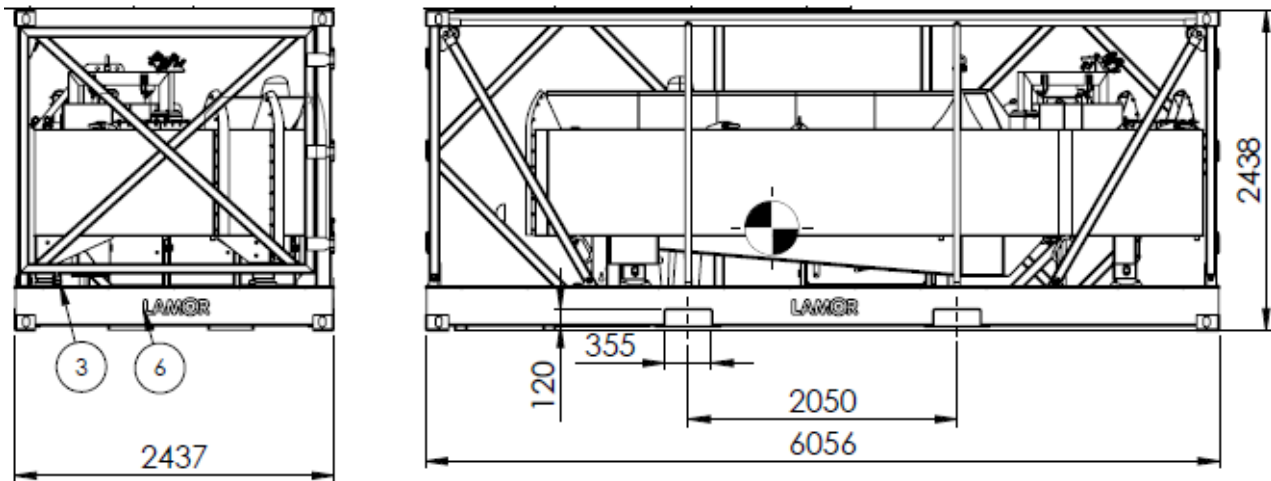
The skimmer mounted in the apex of the Stiff arm is fitted with hydraulically operated debris screen. When the system isn't in use, it is stored on a dedicated 20 ft flat rack, on deck or on-land storage, and the vessel can be exploited for other activities.

1 Stiff sweep, Length 5 m SB or PS with brush skimmer 3W comes with following accessories:

- brush and weir skimmer modules
- towing chains and ropes
- the entire system typically includes separately offered transfer pump, power supply unit, dedicated storage arrangement with deploying crane and accessories







TECHNICAL SPECIFICATIONS

Length	5200 mm	16.4 ft
Width	2400 mm	7.9 ft
Height	1780 mm	5.8 ft
Weight	ca. 1350 kg	ca. 2,970 lbs
Sweeping width	4520 mm	14.8 ft
Hydraulic flow (skimmer ONLY)	20 l/min *)	5.3 gpm *)
Capacity	depends on pump selection	
Hydraulic pressure	210 bar	3,046 PSI
Power requirement	10 kW *)	13 hp *)

*) excluding the oil transfer pump

FEATURES AND BENEFITS

- Robust design.
- Autonomous system, Fast deployment from dedicated storage by marine knuckle crane
- Less than 10% free water content in collected oil with brush skimmer module.
- Suitable for efficient collection of all types of floating oil from light to high viscosity oils and emulsion.