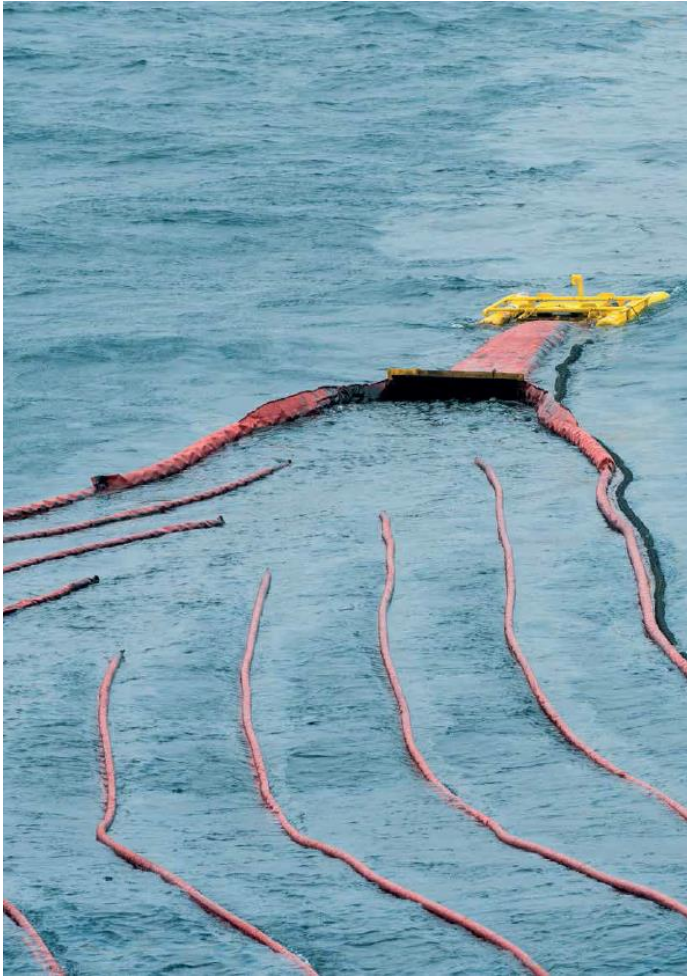


01C Skimmers - Vessel mounted

Sweep Skimmer complete w. Red Can Assy MOS 50 - 397440



The Lamor and Egersund Group MOS Sweeper is a result of a successful development project in close cooperation with NOFO. A smart, innovative and active oil spill recovery system with unique functionality to operate in waves up to five meters and towing speed of 4.5 knots.

Oil spills and potentially large-scale environmental disasters represent a daily challenge for the oil & gas- and shipping industry worldwide. The MOS Sweeper system can be deployed and ready to use in less than 30 min, which ensures a fast response during an emergency.

The V-shaped MOS Sweeper is designed to be operated from a single vessel like a traditional fish trawl. The design of the MOS Sweeper uses the law of hydrodynamics to recover the oil more efficiently and on nature's terms.

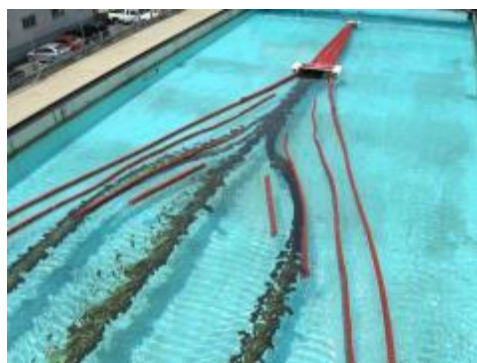
The system has a unique maneuverability compared to other conventional booms, and is very cost effective vs towing with two boats.

The MOS Sweeper technology consists of many well-tested principles from maritime industries. The MOS Sweeper has proven its strong capabilities in harsh weather with high waves and strong currents.

The MOS Sweeper is a complete single vessel oil containment and recovery system, which can chase, collect, skim and pump oil during operation

from the ocean back to the towing vessel. This is achieved by a brush skimmer and pump in the rear end of the sweeper system. There are several pump options such as 1 x Lamor PDAS GTA 115 pump or 1 x Lamor PDAS GTA 140 pump. Twin pump features are also available such as 2 x Lamor PDAS GTA 115 pumps or 2 x Lamor PDAS GTA 140 pumps.

The MOS 50 sweeping width is 50 m (165 ft) and skimming speed up to 4.5 knots. The length of the V-sweep arrangement is ca. 120 meters (395 ft). The ParaVane system offered as OPTION allows the sweeping operation by using a single vessel.

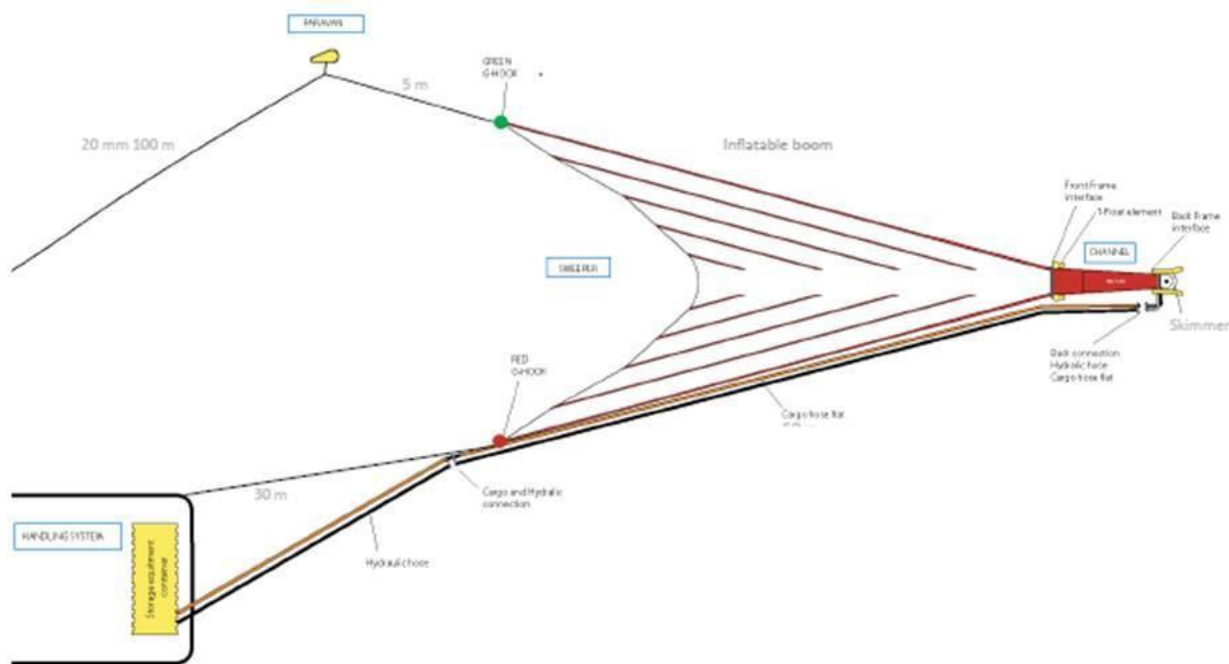


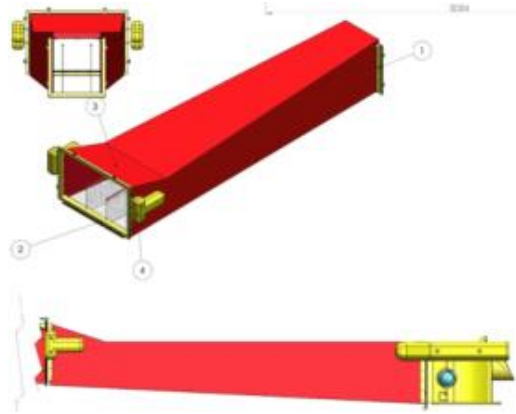
The Oil slick is recovered by the MOS Sweeper. By nature, the hydrodynamic currents caused by the MOS Sweeper design elegantly leads the oil spill back through the system.



Flow Reduction Channel (Red Can) included in basic Lamor MOS 50 Skimmer setup:

The Red Can Flow Reduction channel concentrates the contained oil slick to the inlet of the MOS 50 Skimmer or Optional Collector Pool connected to the outlet of the Red Can. A debris screen is installed on the inlet to the channel. The standard length of the Red Can 50 is ca. 8 m (26 ft) enabling the speed of oil entering the Skimmer and/or Collector Pool reduce down to ca. 1 kn from the sweeping speed of ca. 4,5 kn. The opening width of the reduction channel is ca. 2,5 m (8.2 ft). Channel dimensions are ca. 1,5 m x ca. 1,5 m (5 x 5 ft).





The Lamor MOS Sweeper system consists of:

Handling system:

- lifting device and deployment/retrieving winch (offered as an option here. Vessel crane system can be used as well, if this exists)
- handling/storage reel(s) for sweeper and hoses and towing ropes

Paravane:

- boom vane

Sweeper panel:

- sweeper

Channel:

- red can

Skimmer:

- Lamor MOS skimmer

Oil transfer pump(s):

- Lamor PDAS GTA pump(s)

Hydraulic and Oil Transfer Hoses:

- hydraulic hoses with stainless steel TEMA connectors
- oil transfer hoses with Camlock connectors

Towing lines

- complete set of towing lines

Manual hydraulic control panel

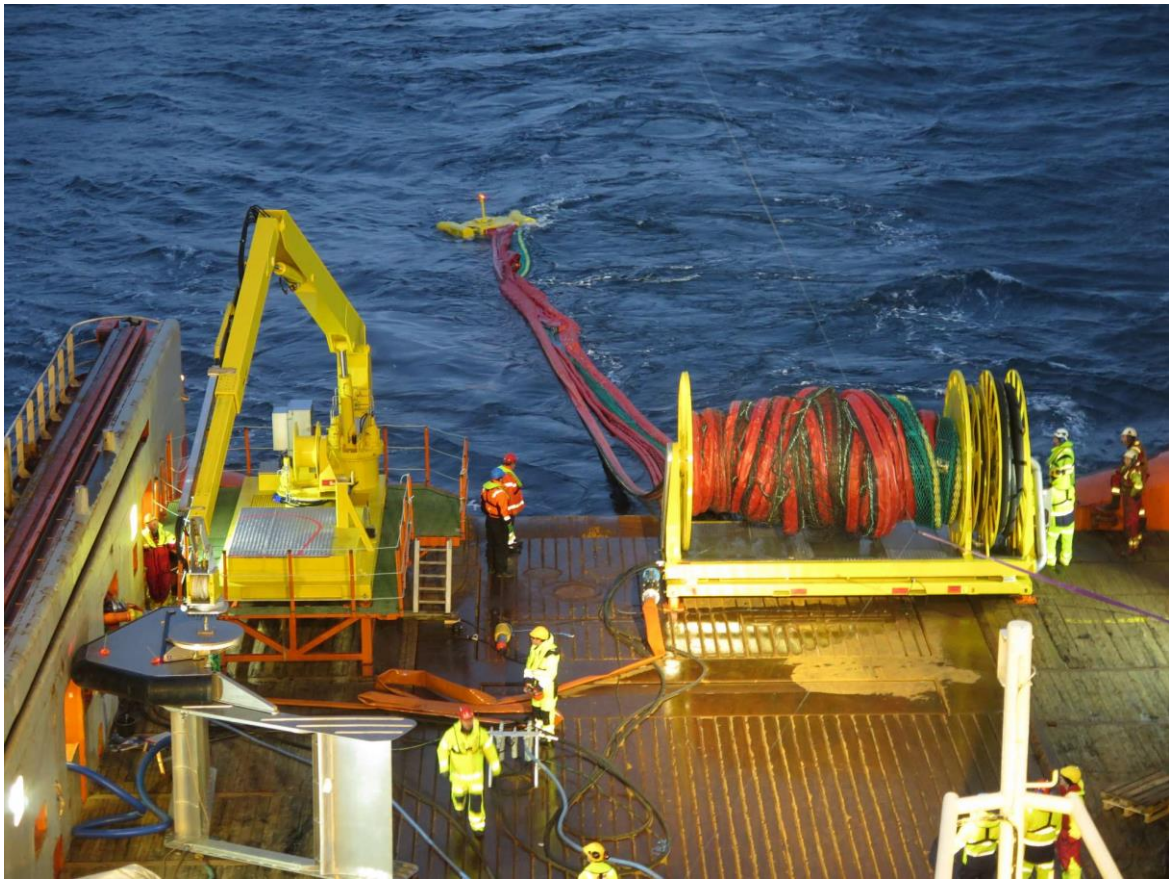
- hydraulic control panel with PVG valves

Hydraulic power unit:

- diesel driven hydraulic power unit

TECHNICAL SPECIFICATIONS MOS 50

Sweeping width	50 m	165 ft
Length	ca. 100 m	ca. 330 ft
Weight	ca. 3500 kg	ca. 7,700 lbs
Skimming speed	2,3 m/s	4.5 kn
Oil Encounter Rate (in 1 mm (3/64") Oil Layer)	416 m ³ /h	1,832 gpm
Wave heights	0...3 m	0...10 ft



FEATURES AND BENEFITS OF THE MOS SWEEPER SYSTEM

- MOS Sweeper 50 for Nearshore and Offshore use with integrated skimmer and/or pumping system.
Sweep width: 50 m (165 ft)
- Pump capacity: 115 – 2 x 250 m³/h (616 – 2 x 1,100 gpm)
- Single vessel operation
- Towing speed: up to 4.5 knots
- Wave heights: 0 - 3 m

Benefits

- Unique single vessel oil spill recovery system
- High speed and cost efficient oil spill recovery system

PRODUCT CONFIGURATIONS / OPTIONS

- | | |
|---|--|
| • Paravane 25/50 | ID# 398410 |
| • Collector Pool MOS 25/50 | ID# 398411 |
| • Air Inflator for the Collector Pool | ID# 216808 |
| • Skimmer/Pump System | Several Optional Alternatives |
| • Hydraulic Power Supply Unit | According to the Skimmer/Pump hydraulic requirements |
| • Boom Reel U 2358 for MOS 50 | ID# 398367 (w. Steel Spool) 24 m ³ |
| • Hydraulic and Oil Transfer Hoses | ca. 150 m (ca. 495 ft) |
| • 2x20 or 1x40 ft Container for Storage | (please note: the reel does not fit in a standard ISO container) |