

ProPlay[®]

by Schmitz Foam Products



ProPlay[®]-Sport

Worldwide Reference Book





SOCCER

Page 04 – 29



FOOTBALL

Page 30 – 53



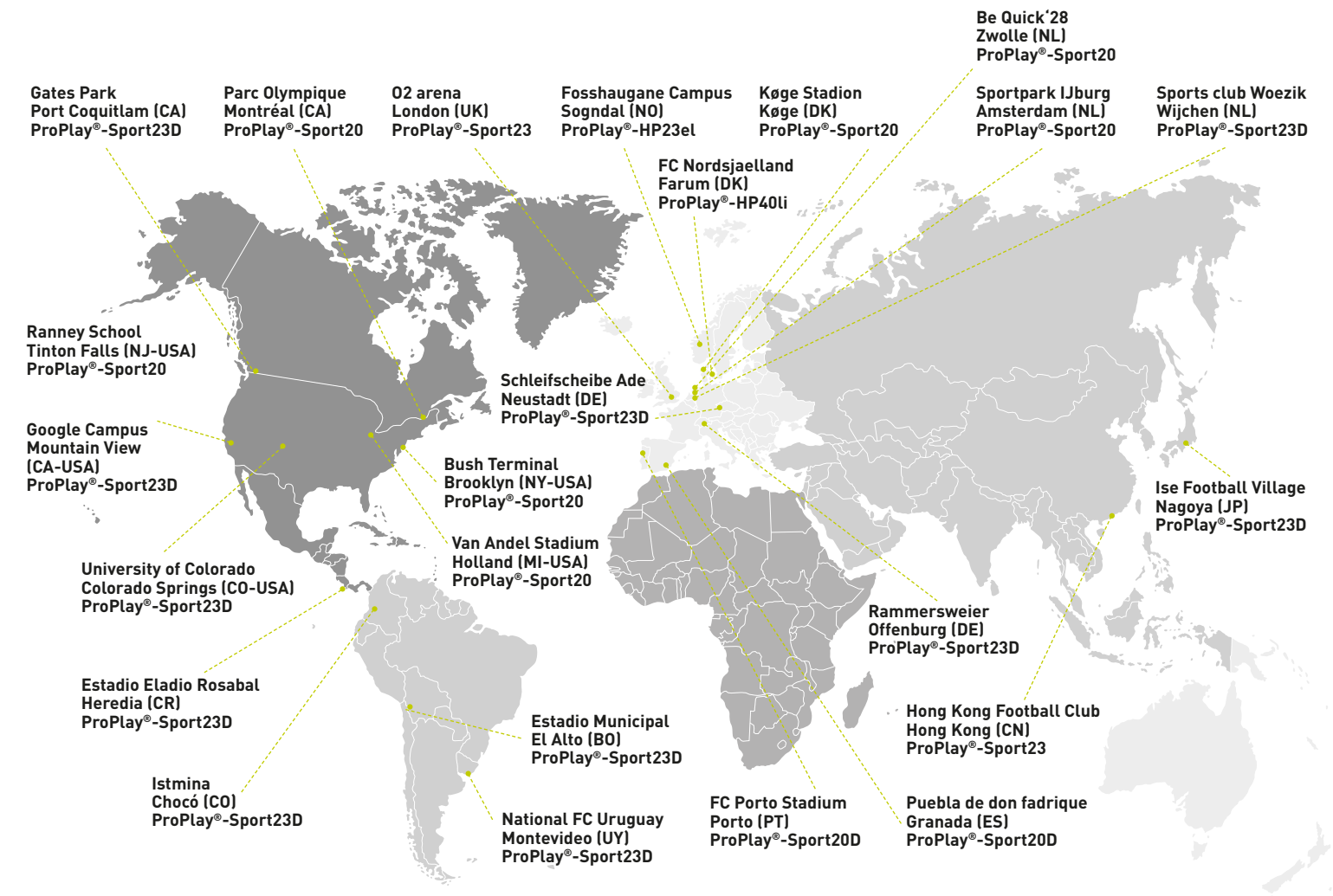
RUGBY

Page 54 – 67



MULTI PURPOSE

Page 68 – 79



SOCCER





Ranney School – USA (NJ)

Location: 235 Hope Rd, Tinton Falls, NJ 07724, United States



Schmitz Foam Products B.V.

Roermond – The Netherlands

T. +31 475 370 270

sales@schmitzfoam.com

www.schmitzfoam.com

Schmitz Foam Products LLC

Coldwater (MI) – United States

T. +1 517 781 6620

sales@schmitzfoam.com

www.schmitzfoam.com/en-us



Project	Ranney School
Product	ProPlay®-Sport20
Application	Soccer
Completion	2020
Special	All-in-one, eco-friendly turf system that is 100% recyclable
In cooperation with	Act Global, Elite Turf

Students and athletes of Ranney School will be the first in the country to benefit from the all-in-one, eco-friendly turf system that's 100% recyclable, healthier for players, more playable, and more durable. "The ability to feature the same playing ground as the professionals use on our campus is an incredible benefit for our students. This system will increase the playing hours, be better on the environment, and increase the safety of our students.," said Ranney School Athletic Director Natalie Gorman.



Be Quick '28 – The Netherlands

Location: Stadionplein 25, 8025 CP Zwolle, Netherlands



Schmitz Foam Products B.V.
Roermond – The Netherlands

T. +31 475 370 270
sales@schmitzfoam.com
www.schmitzfoam.com

Schmitz Foam Products LLC
Coldwater (MI) – United States

T. +1 517 781 6620
sales@schmitzfoam.com
www.schmitzfoam.com/en-us



Project	Field replacement at Be Quick '28
Product	ProPlay®-Sport20
Application	Soccer
Completion	2020
In cooperation with	CCGras, Sallandse United

The new ProPlay-Sport20 hit the market for the first time in 2020. One of the first Dutch artificial turf football fields to benefit is the renovated main field at BeQuick '28 in Zwolle. The field is filled in with TPE infill and sand that has been reclaimed from the previous top-layer. The renovated top-layer was installed on the ProPlay-Sport20. The contractor was asked to deliver a pitch that would pass the tests the Dutch FA, KNVB, has set for artificial turf pitches. Because we did not want to replace the existing subbase of sand and steagran, it was decided to use the ProPlay-Sport20. It turned out to be the only way for the field to meet those KNVB requirements.



FC Nordsjaelland – Denmark

Location: Idrætsvænget 2, 3520 Farum, Denmark



Schmitz Foam Products B.V.
Roermond – The Netherlands

T. +31 475 370 270
sales@schmitzfoam.com
www.schmitzfoam.com

Schmitz Foam Products LLC
Coldwater (MI) – United States

T. +1 517 781 6620
sales@schmitzfoam.com
www.schmitzfoam.com/en-us



Project	Field replacement at FC Nordsjaelland
Product	ProPlay®-HP40li
Application	Soccer
Completion	2019
In cooperation with	Hatko

Farum Park is the home ground of FC Nordsjælland. The football stadium was the first stadium in the Danish Superliga with an artificial grass field, originally installed in 2012. In 2019 the artificial grass was replaced with a ProPlay-HP40li shock- and drainage pad. The installation obtained FIFA Quality Pro Certification on completion.





Puebla de don fadrique – Spain

Location: Av. Duque de Alba, 6 18820 - Puebla de Don Fadrique (Granada), Spain



Schmitz Foam Products B.V.

Roermond – The Netherlands

T. +31 475 370 270

sales@schmitzfoam.com

www.schmitzfoam.com

Schmitz Foam Products LLC

Coldwater (MI) – United States

T. +1 517 781 6620

sales@schmitzfoam.com

www.schmitzfoam.com/en-us

Project	Puabla de don Fadrique
Product	ProPlay®-Sport20D
Application	Soccer
Completion	2018
In cooperation with	Naturf





Sportpark IJburg – The Netherlands

Location: Dick Hilleniuspad 2 (in het Diemerpark), 1087 BZ Amsterdam, Netherlands



Schmitz Foam Products B.V.
Roermond – The Netherlands

T. +31 475 370 270
sales@schmitzfoam.com
www.schmitzfoam.com

Schmitz Foam Products LLC
Coldwater (MI) – United States

T. +1 517 781 6620
sales@schmitzfoam.com
www.schmitzfoam.com/en-us



Project	Turf replacement AFC IJburg – Amsterdam
Product	ProPlay®-Sport20
Application	Soccer
Completion	Installation in 2010, turf replacement in 2018 where the shock pad remained.

In 2010 AFC IJburg decided to install a turf field with ProPlay®. After eight years, in 2018, the turf had to be replaced. When the turf was taken off recently, installers discovered a flawless ProPlay®-Sport20 field which looked like it was installed yesterday. Moreover, the performance still was on the same level. As good as new, not a single sheet needed to be replaced.





Køge Stadion – Denmark

Location: Ved Stadion 2B, 4600 Køge, Denmark



Schmitz Foam Products B.V.

Roermond – The Netherlands

T. +31 475 370 270

sales@schmitzfoam.com

www.schmitzfoam.com

Schmitz Foam Products LLC

Coldwater (MI) – United States

T. +1 517 781 6620

sales@schmitzfoam.com

www.schmitzfoam.com/en-us

Project	Køge Stadion – Køge
---------	---------------------

Product	ProPlay®-Sport20
---------	------------------

Application	Soccer
-------------	--------

Completion	2018
------------	------

In cooperation with	FieldTurf TF Sport & Fritid APS
---------------------	------------------------------------





Van Andel Soccer Stadium – USA (MI)

Location: 225 Fairbanks Ave, Holland, MI 49423, United States



Schmitz Foam Products B.V.

Roermond – The Netherlands

T. +31 475 370 270

sales@schmitzfoam.com

www.schmitzfoam.com

Schmitz Foam Products LLC

Coldwater (MI) – United States

T. +1 517 781 6620

sales@schmitzfoam.com

www.schmitzfoam.com/en-us



Project

The field at Van Andel Stadium is replaced by a new artificial surface – the first of its ever installed in the state of Michigan

Product

ProPlay®-Sport20

Application

Soccer

Completion

2017

For the infill, instead of sand or rubber, an organic mineral commonly used in health food supplements and water filtration systems is used. It helps to reduce surface temperatures. The result is a playing surface that uses no rubber, has lower temperatures and lower maintenance requirements, and can stand up to high usage environments. It's unlike any turf system anywhere in the state of Michigan to date.





Estadio Municipal Villa Ingenio – Bolivia



Schmitz Foam Products B.V.

Roermond – The Netherlands

T. +31 475 370 270

sales@schmitzfoam.com

www.schmitzfoam.com

Schmitz Foam Products LLC

Coldwater (MI) – United States

T. +1 517 781 6620

sales@schmitzfoam.com

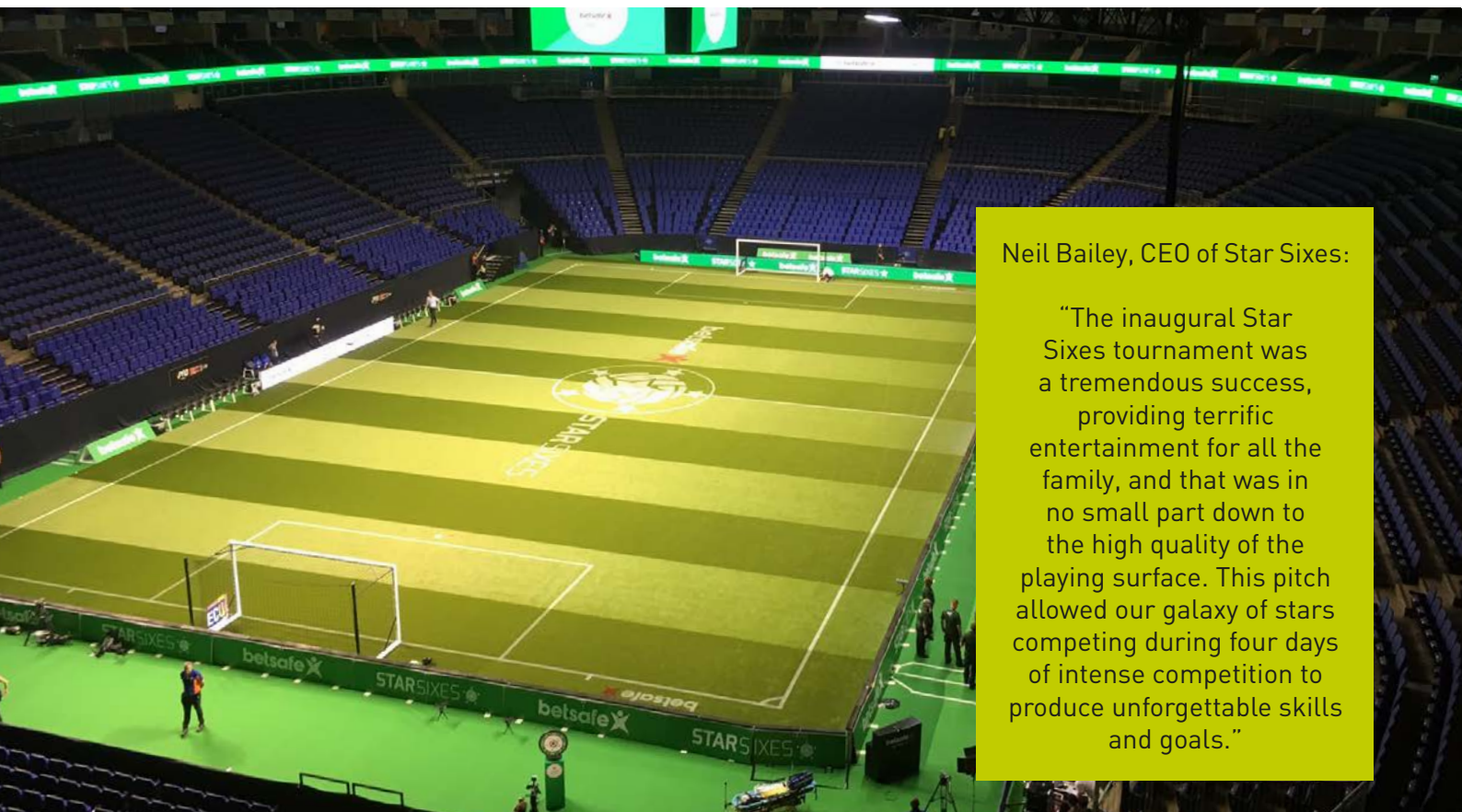
www.schmitzfoam.com/en-us



Project	Estadio Municipal Villa Ingenio in El Alto, Bolivia
Product	ProPlay®-Sport23D
Application	Soccer
Completion	2017

El Alto in Bolivia is the highest major metropolis in the world, with an average elevation of 4,150 m. It makes this field the highest altitude FIFA Quality Pro certified field in the world. Moreover, it is the first synthetic turf field with a horizontal drainage system in Bolivia, using the ProPlay®-Sport23D shock pad. Temperatures in El Alto vary between -17°C and 18°C which can make the installation a challenge. Not for the professional installation crew who completed this installation in just two weeks. ProPlay® panels are puzzle shaped and therefore easy to install during all weather conditions.





Neil Bailey, CEO of Star Sixes:

“The inaugural Star Sixes tournament was a tremendous success, providing terrific entertainment for all the family, and that was in no small part down to the high quality of the playing surface. This pitch allowed our galaxy of stars competing during four days of intense competition to produce unforgettable skills and goals.”

Star Sixes – London

Location: Peninsula Square, London SE10 0DX, United Kingdom



Schmitz Foam Products B.V.

Roermond – The Netherlands

T. +31 475 370 270

sales@schmitzfoam.com

www.schmitzfoam.com

Schmitz Foam Products LLC

Coldwater (MI) – United States

T. +1 517 781 6620

sales@schmitzfoam.com

www.schmitzfoam.com/en-us

Project	02 arena London
Product	ProPlay®-Sport23
Application	Soccer
Completion	2017

After one year's negotiations against some tough competition, a non-infill artificial grass 'plug and play' pitch by Avalon Grass was selected. Schmitz Foam Products provided the ProPlay®-Sport shock pad to cushion the concrete surface at the O2 arena in London. The pitch had to be completed in as little as 48 hours. The experts from GRASSify were called in to ensure the installation went just as perfect as always. They worked 24 hours non-stop to make sure the field was delivered in top condition.





University of Colorado – USA (CO)

Location: 1420 Austin Bluffs Pkwy, Colorado Springs, CO 80918, United States



Schmitz Foam Products B.V.

Roermond – The Netherlands

T. +31 475 370 270

sales@schmitzfoam.com

www.schmitzfoam.com

Schmitz Foam Products LLC

Coldwater (MI) – United States

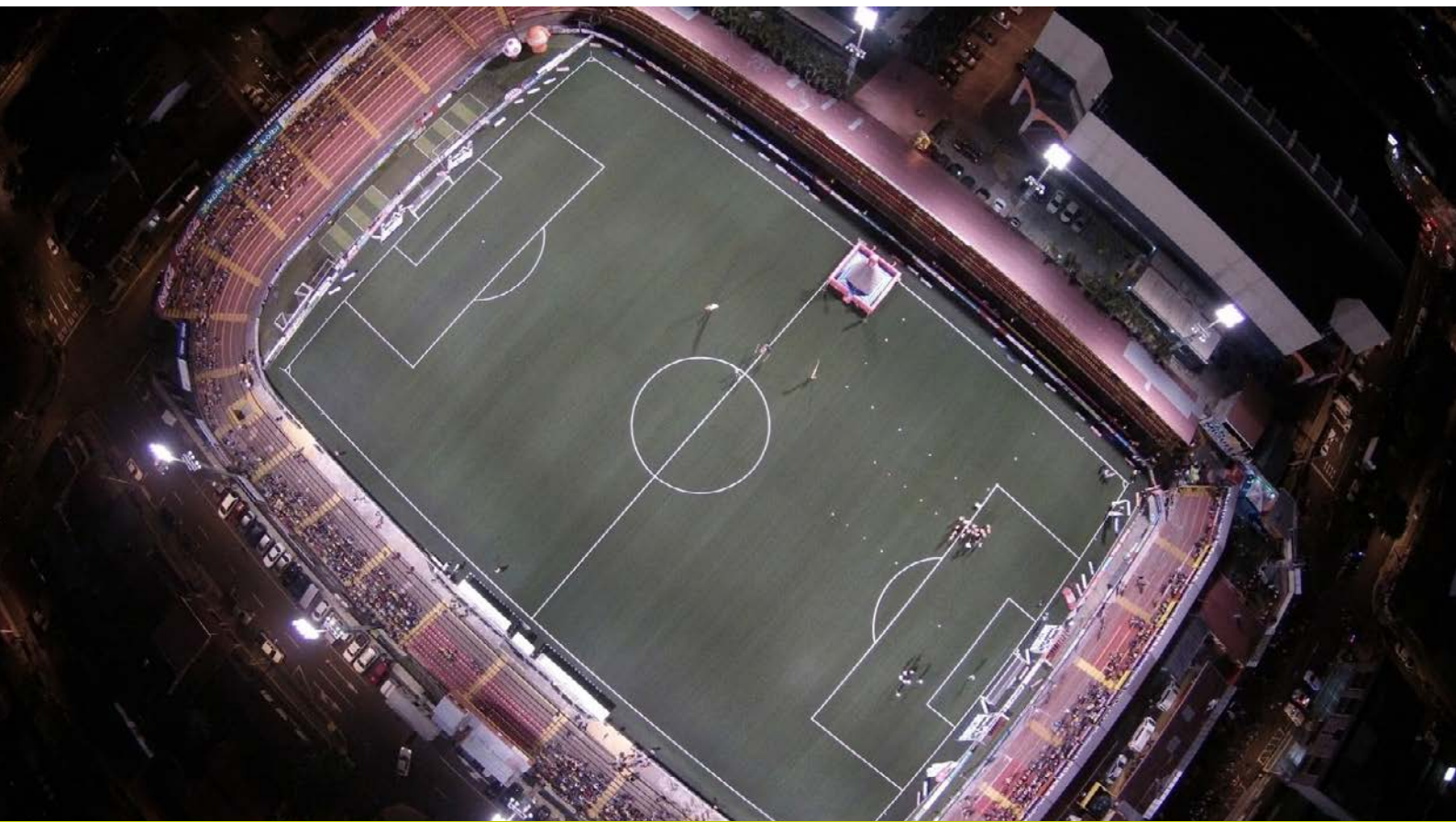
T. +1 517 781 6620

sales@schmitzfoam.com

www.schmitzfoam.com/en-us

Project	Soccer field on the roof of a parking garage, Colorado Springs
Product	ProPlay®-Sport23D
Application	Soccer
Completion	2016
In cooperation with	Academy Sports Turf





Estadio Eladio Rosabal Cordero – Costa Rica

Location: Cubujuqui, Calle 16, Heredia, Costa Rica



Schmitz Foam Products B.V.

Roermond – The Netherlands

T. +31 475 370 270

sales@schmitzfoam.com

www.schmitzfoam.com

Schmitz Foam Products LLC

Coldwater (MI) – United States

T. +1 517 781 6620

sales@schmitzfoam.com

www.schmitzfoam.com/en-us

Project	Club Sport Heredanio
---------	----------------------

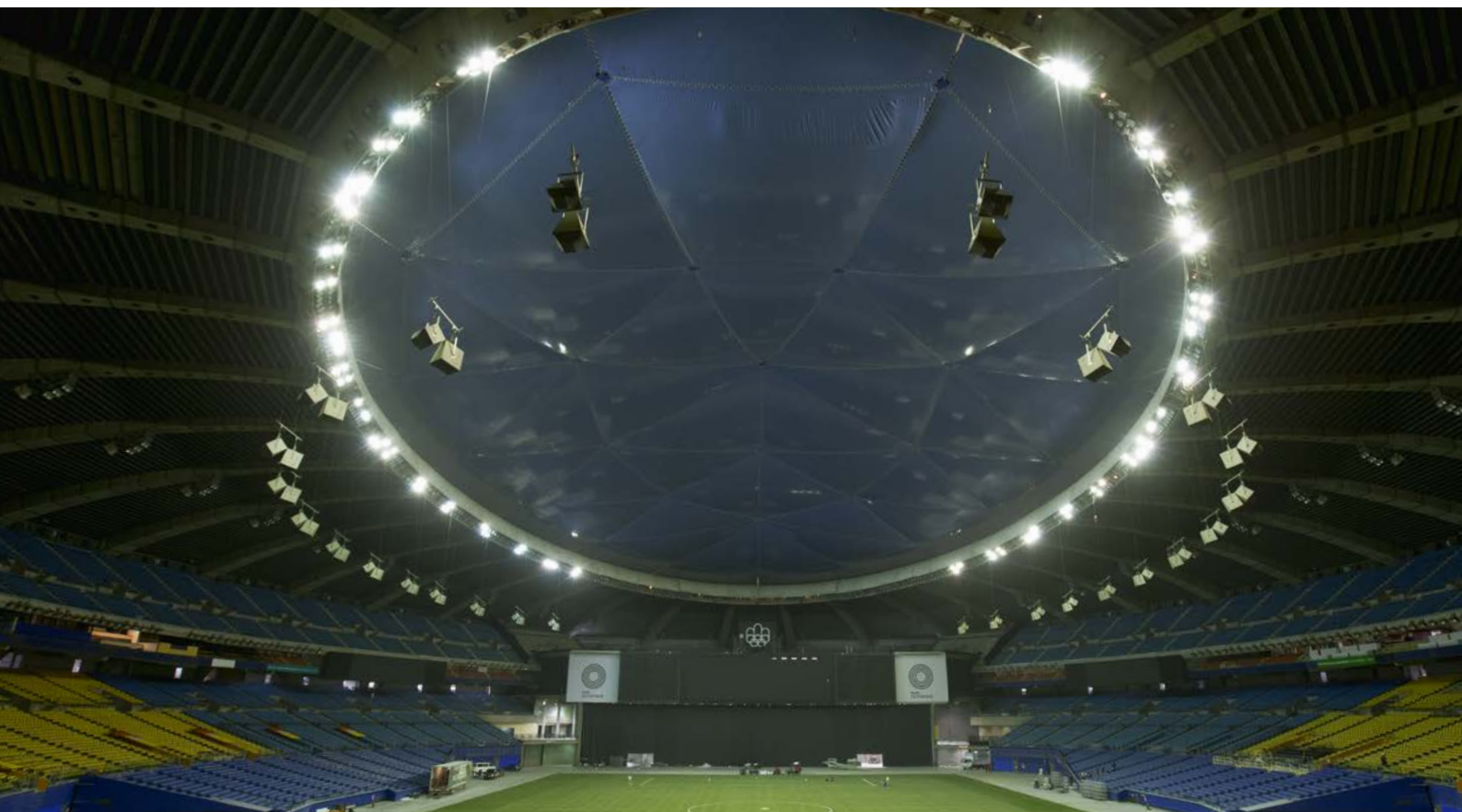
Product	ProPlay®-Sport23D
---------	-------------------

Application	Soccer
-------------	--------

Completion	2016
------------	------

In cooperation with	Stadium Source S.A.
---------------------	---------------------





Parc Olympique de Montréal – Canada (QB)

Location: 4141 Pierre-de Coubertin Ave, Montreal, QC H1V 3N7, Canada



Schmitz Foam Products B.V.
Roermond – The Netherlands

T. +31 475 370 270
sales@schmitzfoam.com
www.schmitzfoam.com

Schmitz Foam Products LLC
Coldwater (MI) – United States

T. +1 517 781 6620
sales@schmitzfoam.com
www.schmitzfoam.com/en-us



Project	Olympic Stadium, Montréal
Product	ProPlay®-Sport20
Application	Soccer
Completion	2015
In cooperation with	Carpell Surfaces, ACT global

Schmitz Foam Products provided the ProPlay®-Sport shock pad to cushion the concrete surface at Montreal's Olympic Stadium, one of the largest Canadian stadiums used for the Women's World Cup in June 2015. The Canadian Soccer Association, FIFA and JSA Sport Architecture Inc. selected partners Carpell Surfaces and ACT Global to supply and install the synthetic turf system. It was the first time all-synthetic turf was used in a FIFA senior World Cup.





National FC – Uruguay

Location: Av. Uruguay 481, 12300 Montevideo, Uruguay



Schmitz Foam Products B.V.
Roermond – The Netherlands

T. +31 475 370 270
sales@schmitzfoam.com
www.schmitzfoam.com

Schmitz Foam Products LLC
Coldwater (MI) – United States

T. +1 517 781 6620
sales@schmitzfoam.com
www.schmitzfoam.com/en-us



Project	Training center complex, Los Cespedes
Product	ProPlay®-Sport23D
Application	Soccer
Completion	2014
In collaboration with	PSport Systems, Desso Sports Systems

This artificial turf field is the first high-quality soccer field in Uruguay. Because the soils in Uruguay are made of sticky clay, it is very difficult to work with. Building the base construction took a long time. Not only due to the soil and surrounding topography, but also due to the subtropical weather with non-stop rainy days. Despite these challenges, the collaborating partners managed to keep the most important goal in mind: quality above all. They delivered a beautiful lawn with perfect white markings.





Sports club Woezik – The Netherlands

Location: Suikerbergseweg 6, 6604 AE Wijchen, Netherlands



Schmitz Foam Products B.V.
Roermond – The Netherlands

T. +31 475 370 270
sales@schmitzfoam.com
www.schmitzfoam.com

Schmitz Foam Products LLC
Coldwater (MI) – United States

T. +1 517 781 6620
sales@schmitzfoam.com
www.schmitzfoam.com/en-us

Project	SC Woezik, Wijchen
Product	ProPlay®-Sport23D
Application	Soccer
Completion	2014
In cooperation with	Saltex





Sports facility Rammersweier – Germany

Location: Durbacher Str. 54, 77654 Offenburg, Germany



Schmitz Foam Products B.V.

Roermond – The Netherlands

T. +31 475 370 270

sales@schmitzfoam.com

www.schmitzfoam.com

Schmitz Foam Products LLC

Coldwater (MI) – United States

T. +1 517 781 6620

sales@schmitzfoam.com

www.schmitzfoam.com/en-us

Project	New artificial grass field, Offenburg
Product	ProPlay®-Sport23D
Application	Soccer
Completion	2014





The best drainage conditions with ProPlay® Inside Playable during all weather conditions



Istmina – Colombia

Although Istmina is a very poor and far location, it has harvested important football players. A young player called Jhon Córdoba for example, is one of the most promising strikers in Colombia and has been selected for minor national team to compete internationally. Sarmiento: 'My father coached Jhon in Envigado FC and pull him from minor divisions to the professional team and supported him. As a sample of gratitude, young Jhon helped us get a new synthetic field in his home town.'

The new field has a major impact on the small community of Istmina. Sarmiento: 'The locals couldn't be happier; they were visited by the local press and people from the municipality to observe the field passing the FIFA tests. We are touched by the impact that this field has brought to this community, to give the best quality to such a small town in the middle of nowhere, where violence is everywhere because of the gold and platinum war the region is suffering. Thanks to Jhon Córdoba and Schmitz Foam Products, young kids can now dream of becoming professional athletes and distract from the difficulties of poverty and violence.'



Schmitz Foam Products B.V.
Roermond – The Netherlands
T. +31 475 370 270
sales@schmitzfoam.com
www.schmitzfoam.com

Schmitz Foam Products LLC
Coldwater (MI) – United States
T. +1 517 781 6620
sales@schmitzfoam.com
www.schmitzfoam.com/en-us



Project	New soccer pitch, Chocó
Product	ProPlay®-Sport23D
Application	Soccer
Completion	2013
In collaboration with	PSport Systems SAS

Recently, our installer PSport Systems, installed ProPlay®-Sport23D on a field in Istmina, a municipality and town in the Chocó department, Colombia. Istmina is the second rainiest place in the world.

PSport Systems General director Pedro Daniel Sarmiento: 'Since the installation, the field has suffered really heavy rains but the field stays playable and looks fantastic.'





The best conditions with ProPlay® Inside

High quality base for top performance



"Schleifscheibe Ade" – Germany

Location: Seifenweg 4, 01844 Neustadt / Sachsen, Germany

The current underlayment could be maintained in the new construction of the field. A water-permeable membrane and a prefabricated ProPlay®-Sport shock pad with drainage slots was applied on which the new turf was placed. The field is drained by two drainage pipes on the edge of the field. A large collector captures the excess water. In addition to a new entrance to the playing field ball catch net, benches, several goals and a new players cabin were placed.*

Mr. Ulrich Krüger from UKL Landschaftsarchitekten:
"Because of the limited budget we looked for alternatives for the underlayment. With the selected option, the underlayment could easily be re-used in the new set-up. Another important advantage was that we did not need a complete new and expensive drainage system. Through a sealed 'gable' slope the water is collected in the trench drain on both sides of the playing field."

*Source: References /Amt Stadtentwicklung/Bauwesen Neustadt/ Sa.



Schmitz Foam Products B.V.
Roermond – The Netherlands
T. +31 475 370 270
sales@schmitzfoam.com
www.schmitzfoam.com

Schmitz Foam Products LLC
Coldwater (MI) – United States
T. +1 517 781 6620
sales@schmitzfoam.com
www.schmitzfoam.com/en-us



Project	SSV Neustadt/Sachsen e.V.
Product	ProPlay®-Sport23D
Application	Soccer
Completion	2013
Architect	UKL Dresden

Former 'Tennenplatz' called "Neustädter-Schleifscheibe", recently transformed into a modern artificial grass field. Because ProPlay®-Sport23D was applied in the design, an affordable and high-quality execution was possible.



Peter Näther, Object Manager SSV Neustadt/ Sa.:
"We are very enthusiastic about the optimal playing characteristics. The players love this field because of its excellent sporttechnical characteristics. Even after heavy rain showers the field is immediately playable. The drainage system functions great!"





Ise Football Village – Japan



Schmitz Foam Products B.V.

Roermond – The Netherlands

T. +31 475 370 270

sales@schmitzfoam.com

www.schmitzfoam.com

Schmitz Foam Products LLC

Coldwater (MI) – United States

T. +1 517 781 6620

sales@schmitzfoam.com

www.schmitzfoam.com/en-us

Project	Soccer field at Nagoya, Mie Prefecture
Product	ProPlay®-Sport23D
Application	Soccer
Completion	2013





Bush Terminal Piers Park – USA (NY)

Location: Marginal St &, 43rd St, Brooklyn, NY 11232, United States



Schmitz Foam Products B.V.

Roermond – The Netherlands

T. +31 475 370 270

sales@schmitzfoam.com

www.schmitzfoam.com

Schmitz Foam Products LLC

Coldwater (MI) – United States

T. +1 517 781 6620

sales@schmitzfoam.com

www.schmitzfoam.com/en-us

Project	Industry City, New York
Product	ProPlay®-Sport20
Application	Soccer
Completion	2012





Fosshaugane campus – Norway

Location: Trolladalen 30, 6856 Sogndal, Norway



Schmitz Foam Products B.V.
Roermond – The Netherlands

T. +31 475 370 270
sales@schmitzfoam.com
www.schmitzfoam.com

Schmitz Foam Products LLC
Coldwater (MI) – United States

T. +1 517 781 6620
sales@schmitzfoam.com
www.schmitzfoam.com/en-us



Project	Stadium, Sogndal
Product	ProPlay®-HP23el
Application	Soccer
Completion	2012
Special	The product applied here provides radiant field heating

The soccer field of Fosshaugane Campuss in Sogndal is the first artificial grass field that is heated by a new way of heating: radiant heating. This unique technic gives a tremendous reduction on the operational heating costs. The wire system is integrated in a draining shock pad by Schmitz Foam Products. The functions of this special shock pad – ProPlay®-HP23el – are draining of rain and melting water. Moreover, it gives the right sport technical requirements to the artificial turf system. ProPlay®-HP23el has a very high insulating capacity resulting in almost no lost of heat.





Google Athletic Recreation Field Park, USA (CA)

Location: 2400 Amphitheatre Pkwy, Mountain View, CA 94043, United States



Schmitz Foam Products B.V.
Roermond – The Netherlands

T. +31 475 370 270
sales@schmitzfoam.com
www.schmitzfoam.com

Schmitz Foam Products LLC
Coldwater (MI) – United States

T. +1 517 781 6620
sales@schmitzfoam.com
www.schmitzfoam.com/en-us



Project	Google campus, Mountain View
---------	------------------------------

Product	ProPlay®-Sport23D
---------	-------------------

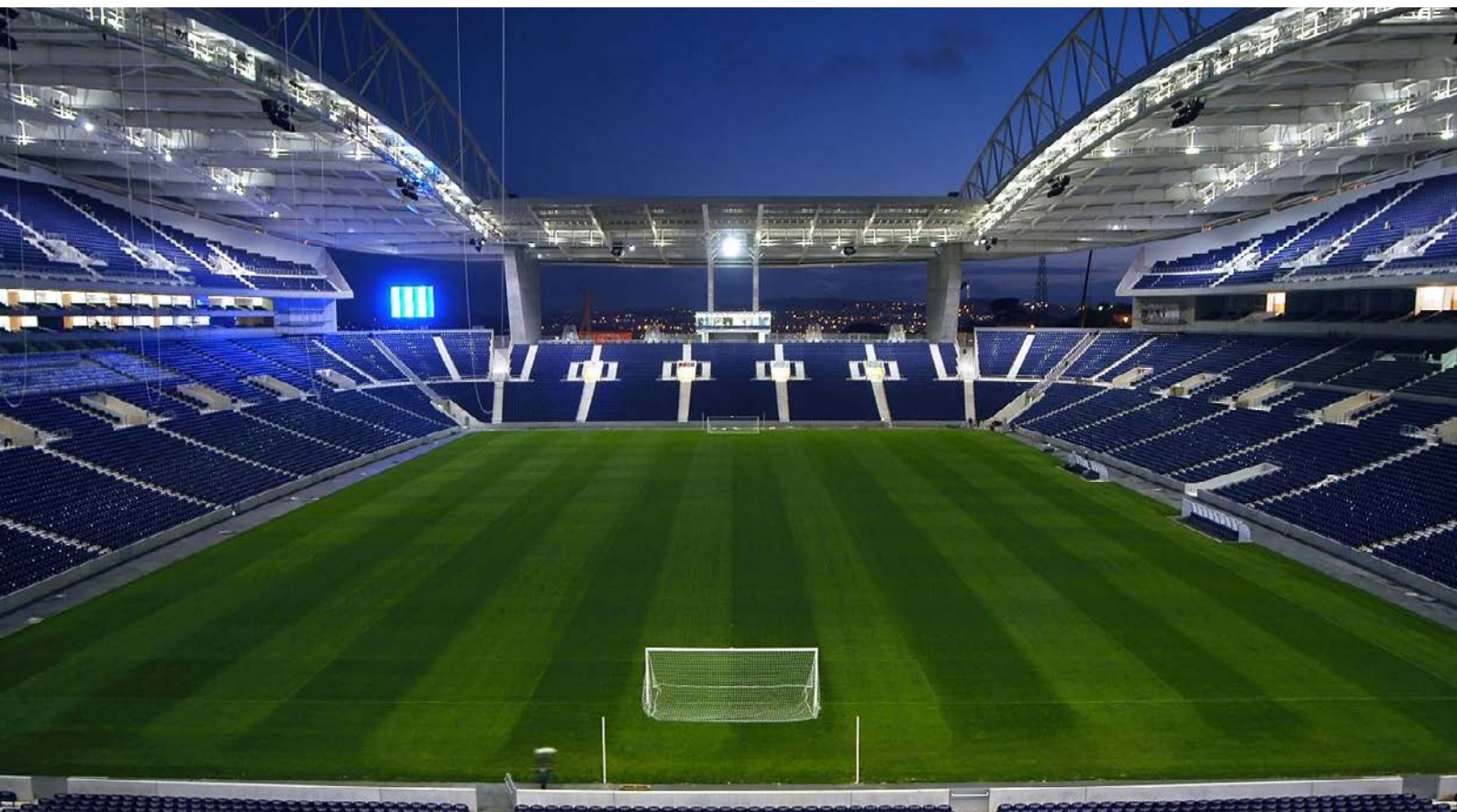
Application	Soccer
-------------	--------

Completion	2011
------------	------

Consultant	Brian McGibbon – Field of Green
------------	---------------------------------

'We love the pad, and I really appreciate all of your company service and your personal effort to help of make this project a success. You put a lot of effort into the project. The people at Google love their new park, and we gave them a system **second to none**. I highly recommend you and the Schmitz Foam Products to others.'





FC Porto Stadium – Portugal

Location: Via Futebol Clube do Porto, 4350-415 Porto, Portugal



Schmitz Foam Products B.V.

Roermond – The Netherlands

T. +31 475 370 270

sales@schmitzfoam.com

www.schmitzfoam.com

Schmitz Foam Products LLC

Coldwater (MI) – United States

T. +1 517 781 6620

sales@schmitzfoam.com

www.schmitzfoam.com/en-us

Project	Estádio do Dragão, Porto
Product	ProPlay®-Sport20D
Application	Soccer
Completion	2011

Estádio do Dragão is an all-seater football stadium located in Porto, and the current home ground of Futebol Clube do Porto. It has a capacity of 50,033 making it the third largest football ground in Portugal.

Source: Wikipedia





Gates Park – Canada (BC)

Location: Reeve St and Wilson Ave, Port Coquitlam, Canada



Schmitz Foam Products B.V.

Roermond – The Netherlands

T. +31 475 370 270

sales@schmitzfoam.com

www.schmitzfoam.com

Schmitz Foam Products LLC

Coldwater (MI) – United States

T. +1 517 781 6620

sales@schmitzfoam.com

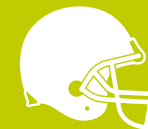
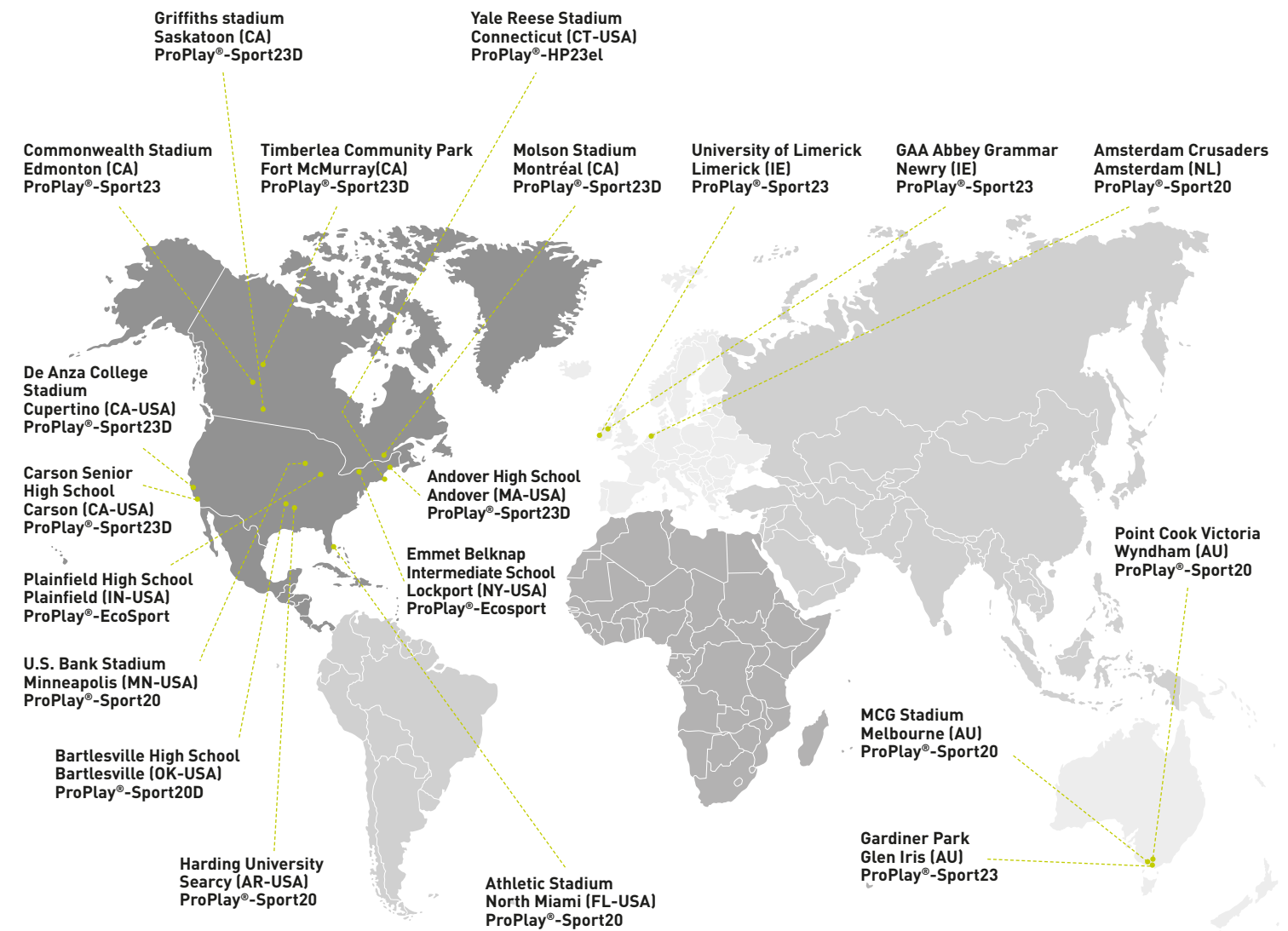
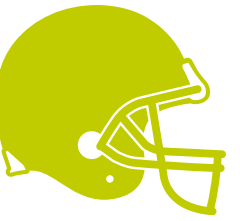
www.schmitzfoam.com/en-us



Project	Replacement of an artificial turf soccer field in the City of Port Coquitlam
Products	ProPlay®-Sport23D UBU Sports Artificial Turf
Application	Soccer
Completion	2010
Architect /Consultant	Roy Myers

‘With a montly average of 1500 mm of rain through the winter, the field performed extremely well with no standing water within 20 minutes of a heavy rainfall event. The playability of the field is great and the City has received nothing but compliments on the quality of the field. The players are reporting that they are feeling better after games, particularly with knee aches and pains’.





FOOTBALL





Griffiths stadium – Canada (SK)

48 Stadium Crescent, Saskatoon, SK S7N 1M3, Canada



Schmitz Foam Products B.V.

Roermond – The Netherlands

T. +31 475 370 270

sales@schmitzfoam.com

www.schmitzfoam.com

Schmitz Foam Products LLC

Coldwater (MI) – United States

T. +1 517 781 6620

sales@schmitzfoam.com

www.schmitzfoam.com/en-us

Project

University of Saskatchewan –
Griffiths stadium

Product

ProPlay®-Sport23D

Application

Football

Completion

2020

In cooperation with

Act Global, Carpell Surfaces inc.





Bartlesville High School – USA (OK)

Location: 1700 Hillcrest Dr, Bartlesville, OK 74003, United States



Schmitz Foam Products B.V.

Roermond – The Netherlands

T. +31 475 370 270

sales@schmitzfoam.com

www.schmitzfoam.com

Schmitz Foam Products LLC

Coldwater (MI) – United States

T. +1 517 781 6620

sales@schmitzfoam.com

www.schmitzfoam.com/en-us



Project	Field installation Bartlesville High School – Oklahoma
Product	ProPlay®-Sport20D
Application	American Football
Completion	2019
In cooperation with	AstroTurf United Turf and Track





Plainfield High School – USA (IN)

Location: 1 Red Pride Dr, Plainfield, IN 46168, United States



Schmitz Foam Products B.V.

Roermond – The Netherlands

T. +31 475 370 270

sales@schmitzfoam.com

www.schmitzfoam.com

Schmitz Foam Products LLC

Coldwater (MI) – United States

T. +1 517 781 6620

sales@schmitzfoam.com

www.schmitzfoam.com/en-us

Project	Plainfield High School
Product	ProPlay®-EcoSport
Application	American Football
Completion	2019
In cooperation with	Sprinturf





U.S. Bank Stadium – USA (MN)

Location: 401 Chicago Ave, Minneapolis, MN 55415, United States



Schmitz Foam Products B.V.
Roermond – The Netherlands

T. +31 475 370 270
sales@schmitzfoam.com
www.schmitzfoam.com

Schmitz Foam Products LLC
Coldwater (MI) – United States

T. +1 517 781 6620
sales@schmitzfoam.com
www.schmitzfoam.com/en-us



Project	Field replcaement at U.S. Bank Stadium
Product	ProPlay®-Sport20
Application	American Football
Completion	2019
In cooperation with	Act Global, General Sport Surfaces (GSS)

U.S. Bank Stadium decided they wanted to replace their turf in 2019. What was applied was Act Global's synthetic turf system which is specifically designed and tested to provide a superior playing surface for athletes geared towards player safety and performance. This proven methodology includes a vast range of quality and durability checks, biomechanical measurements and surface testing. Underneath the turf the ProPlay shock pad provides a solid and safe base.





Gardiner Park – Australia

Location: Glen Iris VIC 3146, Australia



Schmitz Foam Products B.V.

Roermond – The Netherlands

T. +31 475 370 270

sales@schmitzfoam.com

www.schmitzfoam.com

Schmitz Foam Products LLC

Coldwater (MI) – United States

T. +1 517 781 6620

sales@schmitzfoam.com

www.schmitzfoam.com/en-us

Project	Gardiner Park
Product	ProPlay®-Sport23
Application	American Football, Soccer, Cricket
Completion	2019
In cooperation with	Polytan





Emmet Belknap Intermediate School – USA (NY)

Location: 491 High St, Lockport, NY 14094, USA



Schmitz Foam Products B.V.

Roermond – The Netherlands

T. +31 475 370 270

sales@schmitzfoam.com

www.schmitzfoam.com

Schmitz Foam Products LLC

Coldwater (MI) – United States

T. +1 517 781 6620

sales@schmitzfoam.com

www.schmitzfoam.com/en-us

Project

Belknap Intermediate School -
Lockport Football

Product

ProPlay®-Ecosport

Application

American Football

Completion

2018

In cooperation with

Chenango Contracting





North Miami Athletic Stadium - USA (FL)

Location: 2555 NE 151st Street, North Miami Beach, FL 33160, United States



Schmitz Foam Products B.V.

Roermond – The Netherlands

T. +31 475 370 270

sales@schmitzfoam.com

www.schmitzfoam.com

Schmitz Foam Products LLC

Coldwater (MI) – United States

T. +1 517 781 6620

sales@schmitzfoam.com

www.schmitzfoam.com/en-us

Project

Field replacement at the North Miami Athletic Stadium

Product

ProPlay®-Sport20

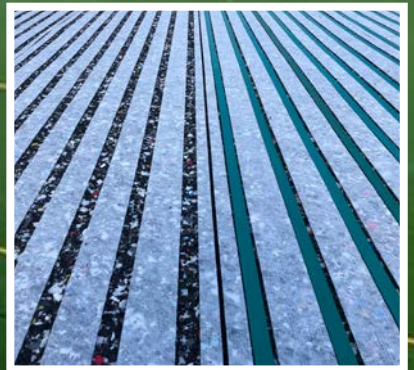
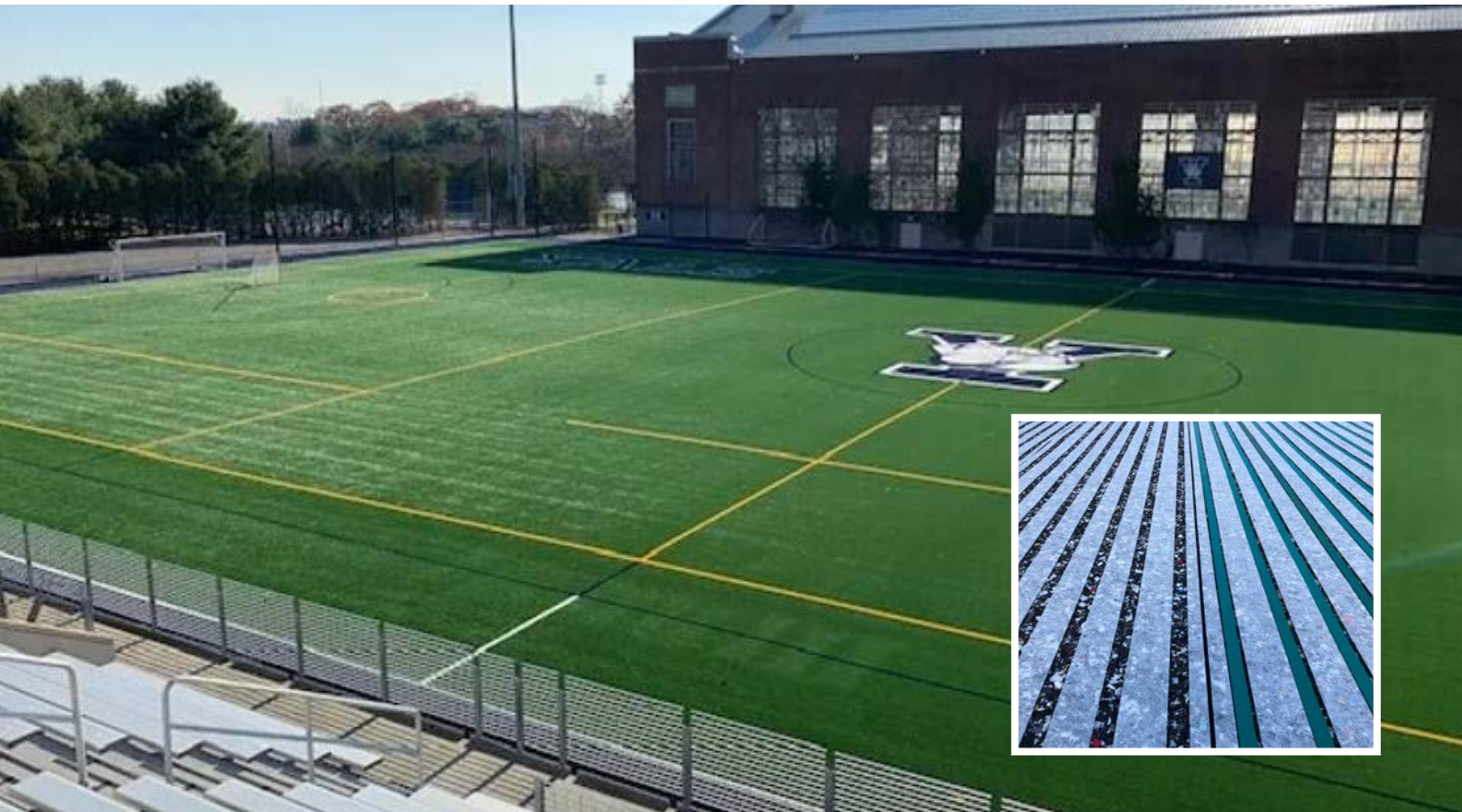
Application

American Football

Completion

2018





Yale Reese Stadium – USA (CT)

Location: 75 Central Ave, Connecticut, CT 06515, United States



Schmitz Foam Products B.V.
Roermond – The Netherlands

T. +31 475 370 270
sales@schmitzfoam.com
www.schmitzfoam.com

Schmitz Foam Products LLC
Coldwater (MI) – United States

T. +1 517 781 6620
sales@schmitzfoam.com
www.schmitzfoam.com/en-us



Project	Yale Reese Stadium
Product	ProPlay®-HP23el
Application	American Football
Completion	2018
In cooperation with	FieldTurf

New build field with a Field Heating System at the Reese Stadium football pitch of Yale University in New Haven Connecticut.





Hong Kong Football Club – Hong Kong

Location: 3 Sports Road, Happy Valley, Hong Kong, China



Schmitz Foam Products B.V.

Roermond – The Netherlands

T. +31 475 370 270

sales@schmitzfoam.com

www.schmitzfoam.com

Schmitz Foam Products LLC

Coldwater (MI) – United States

T. +1 517 781 6620

sales@schmitzfoam.com

www.schmitzfoam.com/en-us

Project	Replacement of main football pitch
Product	ProPlay®-Sport23
Application	Soccer / Rugby
Completion	2017

Since there is a shortage of Rugby and Football pitches in Hong Kong and the demand for pitch use is very high, a quick turnaround time for construction of the pitch was required. The shock pad used for the replacement had to be guaranteed for at least fifteen years and installation had to be weather independent because the weather often slows installation of shock pads in Hong Kong, particularly in the summer. Considering these criteria, the ProPlay®-Sport23 shock pad was selected for this project. The entire project was completed on time and meets both FIFA Pro Quality and World Rugby standards.





Paul van der Kolff,
Crusaders Chairman

"This absolutely is the most beautiful American Football pitch in Europe. It holds a lot of appeal and will attract a lot of people. We already see it happening. It is great for the sport. Six to eight international matches will be played here annually."

Amsterdam Crusaders – The Netherlands

Location: Sloteweg 1043-G, 1066 CC Amsterdam, Netherlands



Schmitz Foam Products B.V.
Roermond – The Netherlands

T. +31 475 370 270
sales@schmitzfoam.com
www.schmitzfoam.com

Schmitz Foam Products LLC
Coldwater (MI) – United States

T. +1 517 781 6620
sales@schmitzfoam.com
www.schmitzfoam.com/en-us



Project	First synthetic turf American Football pitch in Amsterdam
Product	ProPlay®-Sport20
Application	American Football
Completion	2017

American football is a relatively unknown sport in the Netherlands. The Amsterdam Crusaders, located at sportspark Sloten, is the largest and fastest growing American football club in the Netherlands. They got this exclusive American football pitch, matching their European ambitions. It meets the demands of the American NCAA (National Collegiate Athletic Association).





Andover High School – USA



Schmitz Foam Products B.V.

Roermond – The Netherlands

T. +31 475 370 270

sales@schmitzfoam.com

www.schmitzfoam.com

Schmitz Foam Products LLC

Coldwater (MI) – United States

T. +1 517 781 6620

sales@schmitzfoam.com

www.schmitzfoam.com/en-us

Project

Complete renovation of this 400-meter track and field facility Andover High School, Massachusetts

Product

ProPlay®-Sport23D

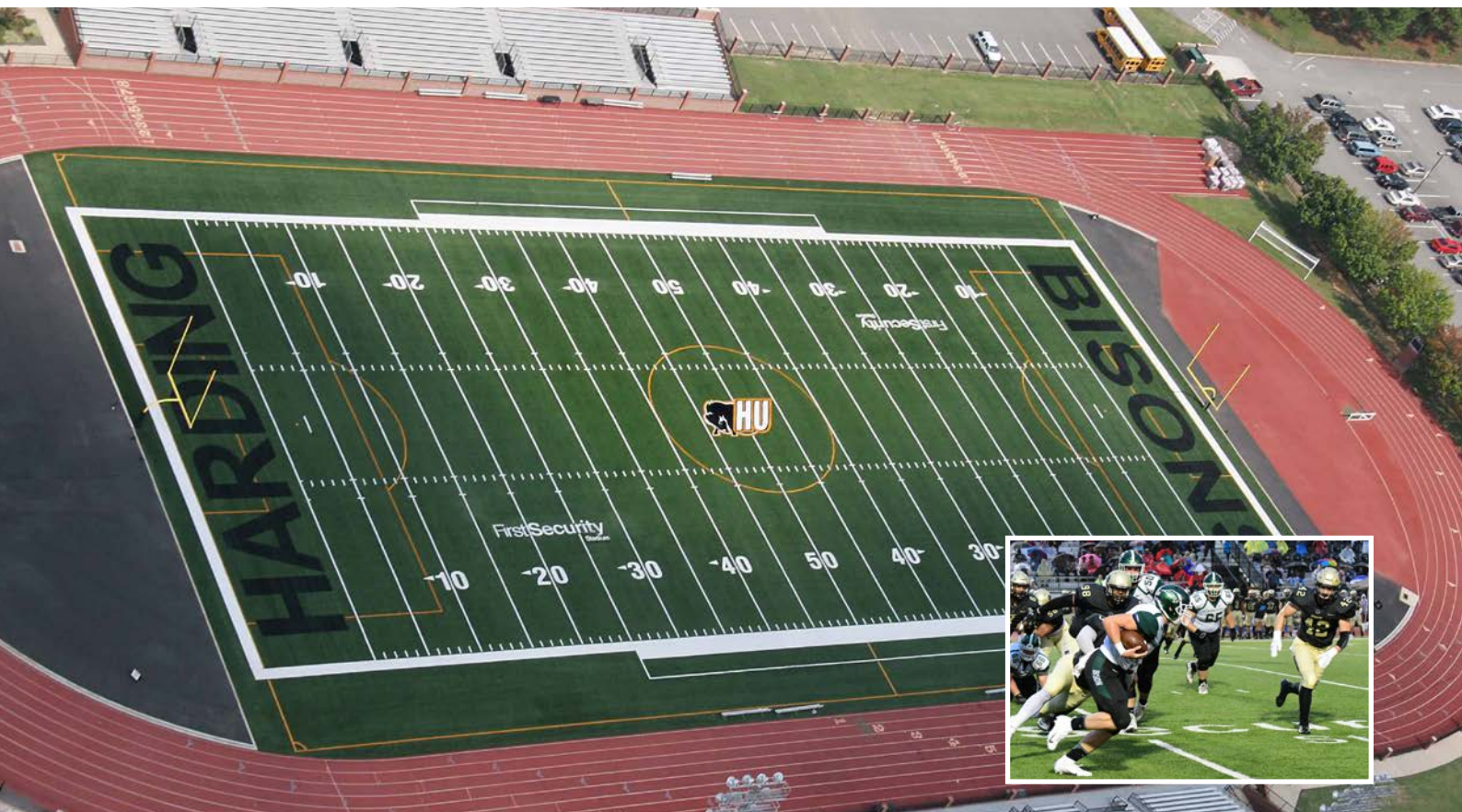
Application

American Football

Completion

2016





Harding University – USA (AR)

Location: 915 E Market Ave, Searcy, AR 72149, United States



Schmitz Foam Products B.V.
Roermond – The Netherlands

T. +31 475 370 270
sales@schmitzfoam.com
www.schmitzfoam.com

Schmitz Foam Products LLC
Coldwater (MI) – United States

T. +1 517 781 6620
sales@schmitzfoam.com
www.schmitzfoam.com/en-us



Project	Replacement of the American Football field at Harding University in Searcy, Arkansas
---------	--

Product	ProPlay®-Sport20
---------	------------------

Application	American Football
-------------	-------------------

Completion	2013
------------	------

The original turf and ProPlay® were installed in 2005 and the turf was replaced in 2013 with the ProPlay® remaining under the turf for the replacement field.





The best drainage conditions with ProPlay® Inside

Top performance shock and drainage pad



Molson Stadium – Canada (QB)

Location: 475 Pine Ave W, Montreal, QC H2W 1S4, Canada

McGill's executive director of athletics and recreation, Drew Love:

'We're pleased to finally move forward on this project. With the almost round-the-clock use that our field gets during the summer and fall, the old surface had degraded significantly. The upgrade will also provide a safer turf for our student-athletes'.

This is what Love said in a statement, explaining that improvements to the drainage were necessary as numerous varsity soccer games and intramural activities had been postponed over the past few years due to water accumulation on the field during heavy rains.

Source: The Montreal Gazette



Schmitz Foam Products B.V.
Roermond – The Netherlands
T. +31 475 370 270
sales@schmitzfoam.com
www.schmitzfoam.com

Schmitz Foam Products LLC
Coldwater (MI) – United States
T. +1 517 781 6620
sales@schmitzfoam.com
www.schmitzfoam.com/en-us



Project	Stade Percival Molson, Montreal
Product	ProPlay®-Sport23D
Application	American Football
Completion	2013
Architect	François Hébert

Not long after the installation of the field, it had to process a very heavy downpour which went on for 25 minutes. After this rain the field was completely dry within 5 minutes.

Architect, François Hébert: 'Not only is the planimetry of the field is perfect, it drains with incredible speed. Spectacular! We have found a winning recipe'.





University of Limerick – Ireland

Location: Castletroy, Limerick, V94 T9PX, Ireland



Schmitz Foam Products B.V.

Roermond – The Netherlands

T. +31 475 370 270

sales@schmitzfoam.com

www.schmitzfoam.com

Schmitz Foam Products LLC

Coldwater (MI) – United States

T. +1 517 781 6620

sales@schmitzfoam.com

www.schmitzfoam.com/en-us

Project	All-weather playings sports field complex, Limerick
Product	ProPlay®-Sport23
Application	Gaelic
Completion	Phase 1 – 2011, Phase 2 – 2013
In cooperation with	Tony Patterson Sportsgrounds
Special	This all-weather sports field complex is the largest of its kind in Europe.





De Anza College Stadium – USA (CA)

Location: Campus Dr, Cupertino, CA 95014, United States



Schmitz Foam Products B.V.

Roermond – The Netherlands

T. +31 475 370 270

sales@schmitzfoam.com

www.schmitzfoam.com

Schmitz Foam Products LLC

Coldwater (MI) – United States

T. +1 517 781 6620

sales@schmitzfoam.com

www.schmitzfoam.com/en-us

Project	De Anza College Stadium, Cupertino
Product	ProPlay®-Sport 23D
Application	American Football
Completion	2012





Carson Senior High School – USA (CA)

Location: 22328 S Main St, Carson, CA 90745, United States



Schmitz Foam Products B.V.

Roermond – The Netherlands

T. +31 475 370 270

sales@schmitzfoam.com

www.schmitzfoam.com

Schmitz Foam Products LLC

Coldwater (MI) – United States

T. +1 517 781 6620

sales@schmitzfoam.com

www.schmitzfoam.com/en-us

Project	High School College Campus, Carson
Product	ProPlay®-Sport23D
Application	American Football
Completion	2011





Timberlea Community Park – Canada (AB)

Location: 230 Powder Drive, Fort McMurray, AB T9E 8L1, Canada



Schmitz Foam Products B.V.

Roermond – The Netherlands

T. +31 475 370 270

sales@schmitzfoam.com

www.schmitzfoam.com

Schmitz Foam Products LLC

Coldwater (MI) – United States

T. +1 517 781 6620

sales@schmitzfoam.com

www.schmitzfoam.com/en-us

Project	Community Park in Fort McMurry
Product	ProPlay®-Sport23D
Application	Canadian Football
Completion	2011
Architect / Consultant	Doug Wournell





Point Cook Victoria – Australia

Location: Saltwater Reserve, Saltwater Promenade, Point Cook VIC 3030, Australia



Schmitz Foam Products B.V.

Roermond – The Netherlands

T. +31 475 370 270

sales@schmitzfoam.com

www.schmitzfoam.com

Schmitz Foam Products LLC

Coldwater (MI) – United States

T. +1 517 781 6620

sales@schmitzfoam.com

www.schmitzfoam.com/en-us



Project	Sythetic oval at Wyndham City Council
Product	ProPlay®-Sport23
Application	Australian Football League
Completion	2011
In cooperation with	TEAM Sports Australia
Special	It is the world's first AFL/Cricket Australia artificial turf field

AFL's General Manager of National & International Development, Andrew Dillon about this project: 'The AFL's own growth was meaning that clubs were asking too much from just one oval. Synthetic ovals offer part of the solution where we can get 3 times the amount of use than a natural turf oval and protection from changing weather and climate.'

Source: AFL Victoria





Commonwealth Stadium – Canada (AB)

Location: 11000 Stadium Rd, Edmonton, AB T5H 4E2, Canada



Schmitz Foam Products B.V.
Roermond – The Netherlands

T. +31 475 370 270
sales@schmitzfoam.com
www.schmitzfoam.com

Schmitz Foam Products LLC
Coldwater (MI) – United States

T. +1 517 781 6620
sales@schmitzfoam.com
www.schmitzfoam.com/en-us



Project	Edmonton Eskimos Stadium, Edmonton
Product	ProPlay®-Sport23
Application	Canadian Football
Completion	2010
Architect / Consultant	Doug Wournell

Commonwealth Stadium is an open-air, all-seater multipurpose stadium located in Edmonton, Alberta. It has a seating capacity of 56,302, making it the largest open-air stadium in Canada. It has been used for Canadian football, athletics, soccer, and rugby union, as well as concerts.

Source: Wikipedia





Melbourne Cricket Ground – Australia

Location: Brunton Ave, Richmond VIC 3002, Australia



Schmitz Foam Products B.V.

Roermond – The Netherlands

T. +31 475 370 270

sales@schmitzfoam.com

www.schmitzfoam.com

Schmitz Foam Products LLC

Coldwater (MI) – United States

T. +1 517 781 6620

sales@schmitzfoam.com

www.schmitzfoam.com/en-us

Project	Cricket Ground, Melbourne
Product	ProPlay®-Sport20
Application	Australian Football League
Completion	2010

The Melbourne Cricket Ground (MCG), also known simply as “The G”, is a sports stadium located in Yarra Park, Melbourne, Victoria. Home to the Melbourne Cricket Club, it is the 10th-largest stadium in the world, the largest in Australia, and has the tallest light towers of any sporting venue.

Source: Wikipedia





GAA Abbey Grammar – Ireland



Schmitz Foam Products B.V.
Roermond – The Netherlands

T. +31 475 370 270
sales@schmitzfoam.com
www.schmitzfoam.com

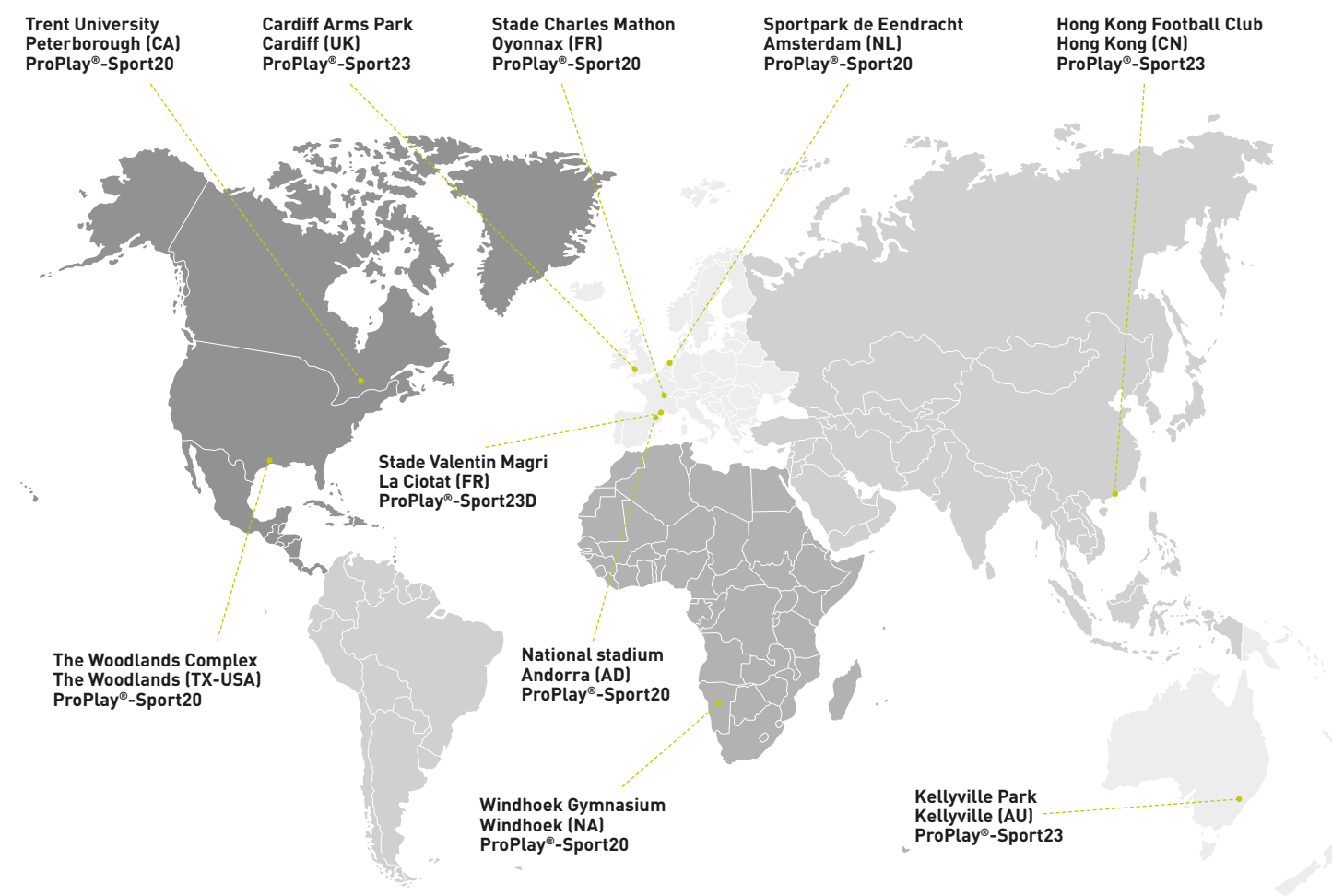
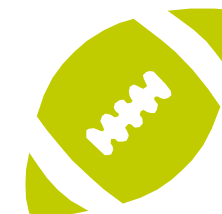
Schmitz Foam Products LLC
Coldwater (MI) – United States

T. +1 517 781 6620
sales@schmitzfoam.com
www.schmitzfoam.com/en-us



Project	Boys Grammar School, Newry
Product	ProPlay®-Sport23
Application	Gaelic
Completion	2010
In cooperation with	Tony Pattersom Sportsgrounds





RUGBY





Stade Valentin Magri – France

Location: 13600 La Ciotat – France



Schmitz Foam Products B.V.

Roermond – The Netherlands

T. +31 475 370 270

sales@schmitzfoam.com

www.schmitzfoam.com

Schmitz Foam Products LLC

Coldwater (MI) – United States

T. +1 517 781 6620

sales@schmitzfoam.com

www.schmitzfoam.com/en-us

Project	Stade Valentin Magri
Product	ProPlay®-Sport23D
Application	Rugby
Completion	2019
In cooperation with	Act Global





National stadium – Andorra

Location: Baixada del Molí 31-35, AD500 Andorra la Vella, Andorra



Schmitz Foam Products B.V.

Roermond – The Netherlands

T. +31 475 370 270

sales@schmitzfoam.com

www.schmitzfoam.com

Schmitz Foam Products LLC

Coldwater (MI) – United States

T. +1 517 781 6620

sales@schmitzfoam.com

www.schmitzfoam.com/en-us

Project	National stadium, Andorra
Product	ProPlay®-Sport20
Application	Soccer, Rugby
Completion	2019
In cooperation with	FieldTurf, ActiSport





Trent University – Canada (QB)

Location: 1600 W Bank Dr, Peterborough, ON K9J 0G2, Canada



Schmitz Foam Products B.V.
Roermond – The Netherlands

T. +31 475 370 270
sales@schmitzfoam.com
www.schmitzfoam.com

Schmitz Foam Products LLC
Coldwater (MI) – United States

T. +1 517 781 6620
sales@schmitzfoam.com
www.schmitzfoam.com/en-us

Project	Trent University Canada
Product	ProPlay®-Sport20
Application	Rugby
Completion	2018
In cooperation with	Carpell Surfaces





Kellyville Park – Australia

Location: Memorial Avenue, Kellyville NSW 2155, Australia



Schmitz Foam Products B.V.
Roermond – The Netherlands

T. +31 475 370 270
sales@schmitzfoam.com
www.schmitzfoam.com

Schmitz Foam Products LLC
Coldwater (MI) – United States

T. +1 517 781 6620
sales@schmitzfoam.com
www.schmitzfoam.com/en-us

Project	Kellyville Ridge
Product	ProPlay®-Sport23
Application	Rugby
Completion	2018
In cooperation with	Polytan





Windhoek Gymnasium – Namibia

Location: Sossuvlei Street, Windhoek, Namibia



Schmitz Foam Products B.V.

Roermond – The Netherlands

T. +31 475 370 270

sales@schmitzfoam.com

www.schmitzfoam.com

Schmitz Foam Products LLC

Coldwater (MI) – United States

T. +1 517 781 6620

sales@schmitzfoam.com

www.schmitzfoam.com/en-us

Project	New rugby pitch at a private school
Product	ProPlay®-Sport20
Application	Rugby
Completion	2016
Tested	According to World Rugby Standards
In cooperation with	Eg Export Ltd





The best conditions with ProPlay® Inside

High quality base for top performance



Stade Charles Mathon – France

Location: 125 Cours de Verdun, 01100 Oyonnax, France

The previous natural pitch was unable to perform all year round and will therefore be removed. The new, artificial pitch delivers optimal playing conditions, safety and comfort for rugby on top level and will be ready at the end of this summer. Because the Oyonnax region can experience challenging weather conditions in the winter months, that's when the main benefits will be seen. For US Oyonnax, this was one of the crucial elements in the choice of a new pitch. But also the reduction of the stadium's expenses in comparison to the maintenance costs of the natural grass field.

The Charles-Mathon stadium will welcome the important matches of the Top 14 and Champions Cup, but will also be the home of community school's teams. The applied FieldTurf Vertex 65 synthetic turf system, with a ProPlay®-Sport20 shock and drainage pad inside, is perfectly adapted for elite rugby as it has successfully undergone demanding tests under the criteria set by the International Rugby Board. In particular, the surface is characterized by soft and strong fibers with extraordinary resistance and durability, giving US Oyonnax the best long term solution and excellent conditions all year round.



Schmitz Foam Products B.V.

Roermond – The Netherlands

T. +31 475 370 270

sales@schmitzfoam.com

www.schmitzfoam.com

Schmitz Foam Products LLC

Coldwater (MI) – United States

T. +1 517 781 6620

sales@schmitzfoam.com

www.schmitzfoam.com/en-us



Project	First synthetic pitch in French Top 14 Rugby competition, Oyonnax
Product	ProPlay®-Sport20
Application	Rugby
Completion	2015
In cooperation with	FieldTurf

The Charles-Mathon Stadium, home stadium of the French Top 14 first division rugby club US Oyonnax, has installed a synthetic pitch. This is the first synthetic pitch for a French professional club of this level in France. Therefore, US Oyonnax is a pioneer in choosing a synthetic turf system among the French Top 14 rugby teams.



Some prominent professional rugby teams in the UK already achieved amazing results by switching to a synthetic surface. Elite Rugby Club Cardiff Blues for example, decided to switch from natural grass to a synthetic turf system from FieldTurf with a ProPlay®-Sport23 shock pad for the 2013 – 2014 season. Cardiff Blues Chief Executive Richard Holland said the new surface now allows games to go ahead no matter the weather. In 2014, the Cardiff Blues even hosted the final of the Amlin Cup in this pitch.

Source: fieldturf.eu





The Woodlands Complex – USA (TX)

Location: 4751 College Park Drive, The Woodlands, TX 77384, United States



Schmitz Foam Products B.V.

Roermond – The Netherlands

T. +31 475 370 270

sales@schmitzfoam.com

www.schmitzfoam.com

Schmitz Foam Products LLC

Coldwater (MI) – United States

T. +1 517 781 6620

sales@schmitzfoam.com

www.schmitzfoam.com/en-us

Project	Six new synthetic rugby fields at Bear Branch & Alden Bridge Sports Park
Product	ProPlay®-Sport20
Application	Rugby / GAA
Completion	2013





The best conditions with ProPlay® Inside Top performance shock and drainage pad



Cardiff Arms Park – Wales

Location: Westgate St, Cardiff CF10 1JA, United Kingdom

The Cardiff Blues, one of the leading rugby teams in the United Kingdom, will achieve their future successes on artificial grass. Last month the removal of the natural turf and installation of the artificial turf construction at the Cardiff Arms Park started. As shock pad underneath the grass is chosen the **ProPlay®-Sport23** from Schmitz Foam Products.

It is not surprising that a ProPlay®-Sport shock pad is chosen over other shock pads or in-situ. The superb quality, durability and consistent playing characteristics are matched by no shock pad or in-situ. Typical the **ProPlay®-Sport23** has proven itself over the years as the best shock pad for Rugby, GAA and American Football fields worldwide.



Schmitz Foam Products B.V.
Roermond – The Netherlands
T. +31 475 370 270
sales@schmitzfoam.com
www.schmitzfoam.com

Schmitz Foam Products LLC
Coldwater (MI) – United States
T. +1 517 781 6620
sales@schmitzfoam.com
www.schmitzfoam.com/en-us



Project	Cardiff Arms Park, Cardiff
Client	Cardiff Blues rugby team
Product	ProPlay®-Sport23
Application	Rugby
Completion	2013

Cardiff Blues Chief Executive Richard Holland:

‘The new surface will allow games to go ahead no matter the weather and hopefully enable us to play a more expansive and attractive game for supporters to enjoy. We’ve put a great amount of effort into researching the different surfaces available and I have no doubt that the new artificial pitch will be a hit with players and supporters alike.’

Source: Wales Online



Cardiff Blues Director of Rugby Phil Davies:

‘Having a new artificial pitch installed at the Arms Park is fantastic news. It will allow us to play the expansive game that we want which will hopefully be attractive to the supporters to watch. This wasn’t always possible last season due to the playing surface and dreadful weather conditions we suffered.’

Source: Wales Online





The best conditions with ProPlay® Inside

The best quality for top performance



Sportpark de Eendracht – The Netherlands

Location: Bok de Korverweg 4, 1067 HR Amsterdam, Netherlands

The synthetic turf system at Sportpark 'De Eendracht' consists of a high quality artificial grass field from FieldTurf on top of a shockabsorbing ProPlay® layer.

Despite the bad weather the almost 12,000 m² field was installed within two days. On the first day, a team from K.S.P. installed the ProPlay® in collaboration with Bas Lodewijkx Synthetic Grass Specialist. On the second day, J & E Sports BV immediately installed the grass. Due to the bad weather conditions it was a huge challenge to get the job done. Thanks to the workmanship of KSP, Lodewijkx and J & E Sports BV the installation went smoothly.

ProPlay® shockabsorbing layers are globally leader in the field of shockabsorbing products for artificial turf. The combination of great shock absorption, pleasant play behavior, optimal sport technical characteristics and 25 year warranty are worldwide unique.



Schmitz Foam Products B.V.
Roermond – The Netherlands
T. +31 475 370 270
sales@schmitzfoam.com
www.schmitzfoam.com

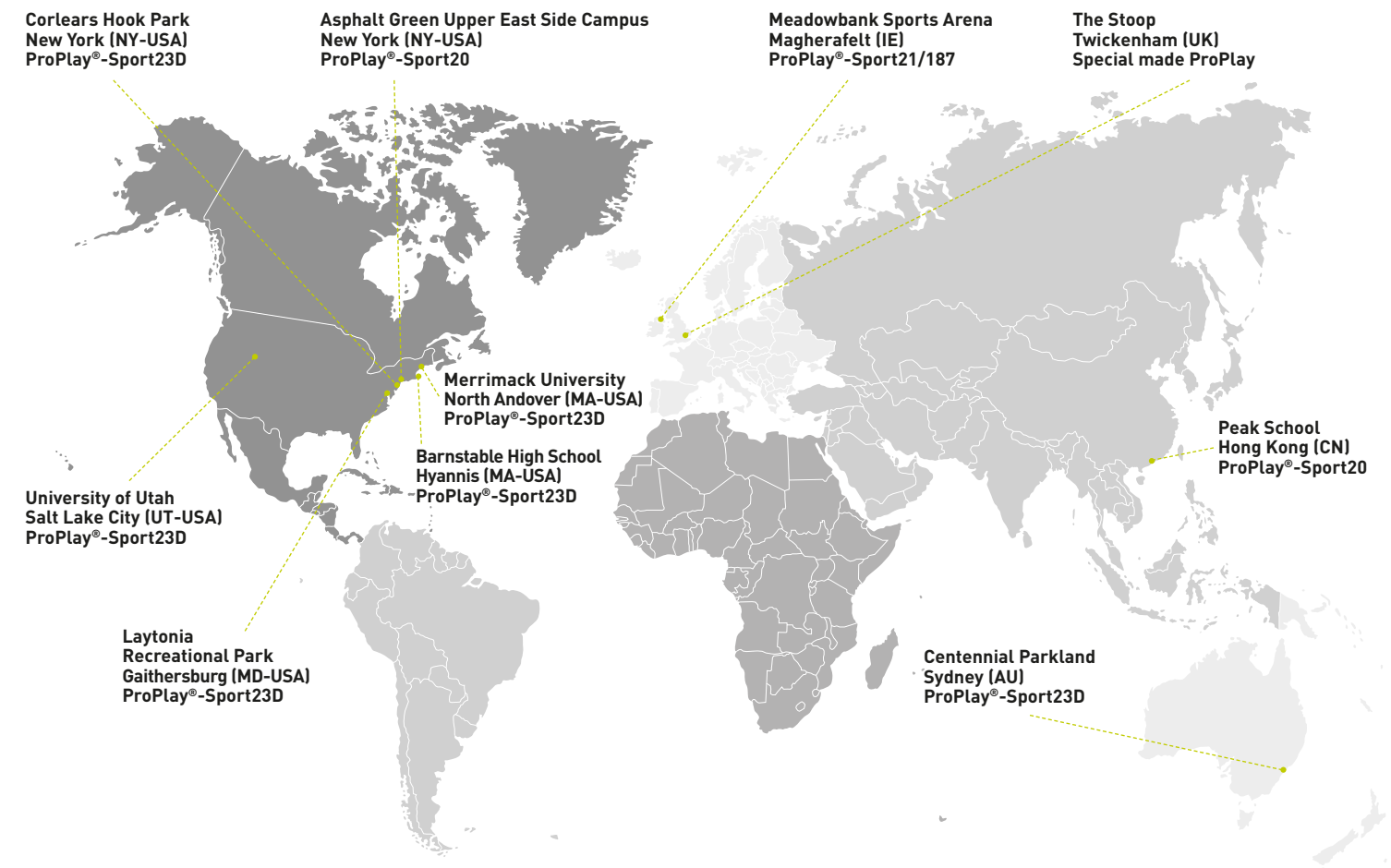
Schmitz Foam Products LLC
Coldwater (MI) – United States
T. +1 517 781 6620
sales@schmitzfoam.com
www.schmitzfoam.com/en-us



Project	National Rugby Centre, Amsterdam
Product	ProPlay®-Sport20
Application	Rugby
Completion	2013
Field size	11.840 m ²
ProPlay Installer	K.S.P. in Lelystad, Bas Lodewijkx Synthetic Grass Specialist
Artificial grass installer	J&E Sports B.V. in Oss

Following the example of major European clubs, the National Rugby Center Amsterdam and AAC Rugby received a world-class artificial turf Rugby field at Sportpark 'De Eendracht'. This artificial grass field was installed in just 2 days!







Asphalt Green Upper East Side Campus – USA (NY)

Location: Manhattans upper east side, 555 East 90th St, New York, NY 10128, United States



Schmitz Foam Products B.V.
Roermond – The Netherlands

T. +31 475 370 270
sales@schmitzfoam.com
www.schmitzfoam.com

Schmitz Foam Products LLC
Coldwater (MI) – United States

T. +1 517 781 6620
sales@schmitzfoam.com
www.schmitzfoam.com/en-us

Project	Asphalt Green field – New York
Product	ProPlay®-Sport20
Application	Multi purpose
Completion	2019
In cooperation with	Greenfields NET Sports Group





Barnstable High School – USA (MA)

Location: 744 W Main St, Hyannis, MA 02601, United States



Schmitz Foam Products B.V.
Roermond – The Netherlands

T. +31 475 370 270
sales@schmitzfoam.com
www.schmitzfoam.com

Schmitz Foam Products LLC
Coldwater (MI) – United States

T. +1 517 781 6620
sales@schmitzfoam.com
www.schmitzfoam.com/en-us



Project	Barnstable High School
Product	ProPlay®-Sport23D
Application	Multisport
Completion	2019
In cooperation with	Act Global, Lawrence Lynch Corp.





Merrimack University – USA (MA)

Location: 315 Turnpike St. North Andover, MA 01845, United States



Schmitz Foam Products B.V.
Roermond – The Netherlands

T. +31 475 370 270
sales@schmitzfoam.com
www.schmitzfoam.com

Schmitz Foam Products LLC
Coldwater (MI) – United States

T. +1 517 781 6620
sales@schmitzfoam.com
www.schmitzfoam.com/en-us



Project	Merrimack University
Product	ProPlay®-Sport23D
Application	Multisport / Baseball
Completion	2019
In cooperation with	FieldTurf Huntress Sports





The Stoop Twickenham – England

Location: Langhorn Dr, Twickenham TW2 7SX - United Kingdom



Schmitz Foam Products B.V.
Roermond – The Netherlands

T. +31 475 370 270
sales@schmitzfoam.com
www.schmitzfoam.com

Schmitz Foam Products LLC
Coldwater (MI) – United States

T. +1 517 781 6620
sales@schmitzfoam.com
www.schmitzfoam.com/en-us



Project	The Stoop
Product	Special made ProPlay
Application	Hockey
Completion	2019
In cooperation with	Polytan Asia Pacific England Hockey

In order to give players and fans the big stadium experience they deserve Polytan, England Hockey and Schmitz Foam Products developed a special hockey system. This system uses two third less water per watering and is reusable in any location. The ProPlay shock pad has a higher than average thickness and density to ensure maximum performance in terms of the game.





Laytonia Recreational Park – USA (MD)

Location: 7300 Airpark Road, Gaithersburg, MD 0879, United States



Schmitz Foam Products B.V.

Roermond – The Netherlands

T. +31 475 370 270

sales@schmitzfoam.com

www.schmitzfoam.com

Schmitz Foam Products LLC

Coldwater (MI) – United States

T. +1 517 781 6620

sales@schmitzfoam.com

www.schmitzfoam.com/en-us

Owner	Montgomery County Department of Parks
-------	---------------------------------------

Products	ProPlay®-Sport23D Shaw Sports Turf with Geofill
----------	--

Application	Multi purpose
-------------	---------------

Completion	2017
------------	------

In cooperation with	Avon Construction Shaw Sports Turf LDD Sorts GTR
---------------------	---



University of Utah – USA (UT)

Location: S Wasatch Dr, Salt Lake City, UT 84112, United States



Schmitz Foam Products B.V.

Roermond – The Netherlands

T. +31 475 370 270

sales@schmitzfoam.com

www.schmitzfoam.com

Schmitz Foam Products LLC

Coldwater (MI) – United States

T. +1 517 781 6620

sales@schmitzfoam.com

www.schmitzfoam.com/en-us



Project	McCarthy Family Track and Field, Salt Lake City
Product	ProPlay®-Sport23D
Application	Multi purpose
Completion	2016

The McCarthy Field features a 400-meter track with nine 42-inch wide lanes surrounding a newly renovated multi-sport synthetic turf surface. The in-field measures 75 × 125 yards and accommodates play for soccer, rugby, men's and women's lacrosse, and football. The previous system failed prematurely because of the drainage. The design build bid was awarded based on capping the field, redoing the perimeter drainage and the incorporation of a ProPlay®-Sport23D pad.





Centennial Parkland – Australia

Location: Centennial Park, New South Wales 2021, Australia



Schmitz Foam Products B.V.
Roermond – The Netherlands

T. +31 475 370 270
sales@schmitzfoam.com
www.schmitzfoam.com

Schmitz Foam Products LLC
Coldwater (MI) – United States

T. +1 517 781 6620
sales@schmitzfoam.com
www.schmitzfoam.com/en-us



Project	New internationally-certified all-weather sports field in Sydney
Product	ProPlay®-Sport23D
Application	Multi purpose
Completion	2016

The goal for the Centennial Parkland Synthetic Field was to overlay a number of aged netball courts with a modern synthetic field offering multi-sport activity do the local user groups. The football field which has a ProPlay®-Sport23D shock pad underneath, is now heavily booked for team activity and compliments the nearby sports and recreation facilities. Not only are long established clubs playing and training on the surface, but small team sports activity is heavily booked beyond original expectations.





Meadowbank Sports Arena – Ireland

Location: Ballyronan Rd, Magherafelt BT45 6EH, United Kingdom



Schmitz Foam Products B.V.
Roermond – The Netherlands

T. +31 475 370 270
sales@schmitzfoam.com
www.schmitzfoam.com

Schmitz Foam Products LLC
Coldwater (MI) – United States

T. +1 517 781 6620
sales@schmitzfoam.com
www.schmitzfoam.com/en-us



Project	Magherafelt, County Derry
Product	ProPlay®-Sport21/187
Application	GAA
Completion	2014
In cooperation with	SIS Pitches / Pride Sports

SIS Pitches have manufactured their largest pitch for a project which was managed by Pride Sports & Leisure in Ireland. The pitch was commissioned by Magherafelt District Council in County Derry. The surface was SIS TriSports 60 on ProPlay®-Sport21/187 shockpad.





Peak School – PR China



Schmitz Foam Products B.V.

Roermond – The Netherlands

T. +31 475 370 270

sales@schmitzfoam.com

www.schmitzfoam.com

Schmitz Foam Products LLC

Coldwater (MI) – United States

T. +1 517 781 6620

sales@schmitzfoam.com

www.schmitzfoam.com/en-us

Project	Soccer and multi play area on top of a 15 stock high apartment building, Hong Kong
Product	ProPlay®-Sport20
Application	Soccer and multi purpose
Completion	2012
Special	Shock pad is also functioning as a roof-drain system





Corlears Hook Park – USA (NY)

Location: 451 Cherry Street Manhattan, New York 10002, United States



Schmitz Foam Products B.V.

Roermond – The Netherlands

T. +31 475 370 270

sales@schmitzfoam.com

www.schmitzfoam.com

Schmitz Foam Products LLC

Coldwater (MI) – United States

T. +1 517 781 6620

sales@schmitzfoam.com

www.schmitzfoam.com/en-us

Project	City Park, Manhattan
Product	ProPlay®-Sport23D
Application	Multi purpose
Completion	2011





Schmitz Foam Products B.V.

Roermond – The Netherlands

T. +31 475 370 270

sales@schmitzfoam.com

www.schmitzfoam.com

Schmitz Foam Products LLC

Coldwater (MI) – United States

T. +1 517 781 6620

sales@schmitzfoam.com

www.schmitzfoam.com/en-us



www.schmitzfoam.com

www.schmitzfoam.com/en-us