



YULIO

# USING YULIO JUMP WITH CET DESIGNER

**CET** *Designer*

## USER GUIDE

# USING YULIO JUMP WITH CET DESIGNER

---

If you currently use CET Designer to generate renders, you can now use it with Yulio Jump to cloud render cubemaps or Yulio Jump Perspective to cloud render 2D perspective images.

Yulio is compatible with a wide range of CAD tools even without the use of plugins, providing the content meets our file requirements. Yulio's CAD plugins simply speed up your workflow by generating cube maps from within the CAD software. Learn more about Yulio's file requirements [here](#).

## IN THIS SECTION

- Downloading and Installing CET Designer extension
- Authoring your scene
- Configuring and rendering your scene
- Viewing your VR projects in Yulio

**CET***Designer*

01

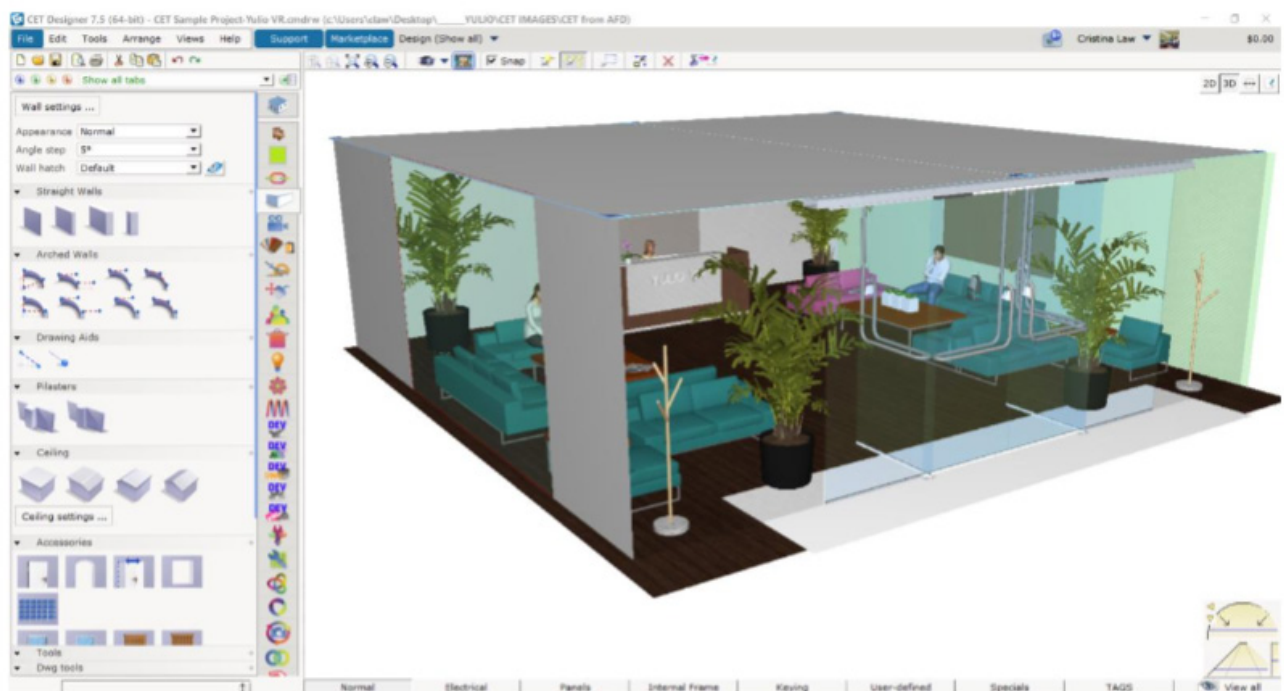
## DOWNLOAD THE YULIO CET DESIGNER EXTENSION

Download and install the Yulio CET Designer extension from the Configura Marketplace.

02

## DESIGN IN CET DESIGNER

- Create your drawing within CET Designer.
- Make sure you include 4 walls and add a ceiling within your drawing.

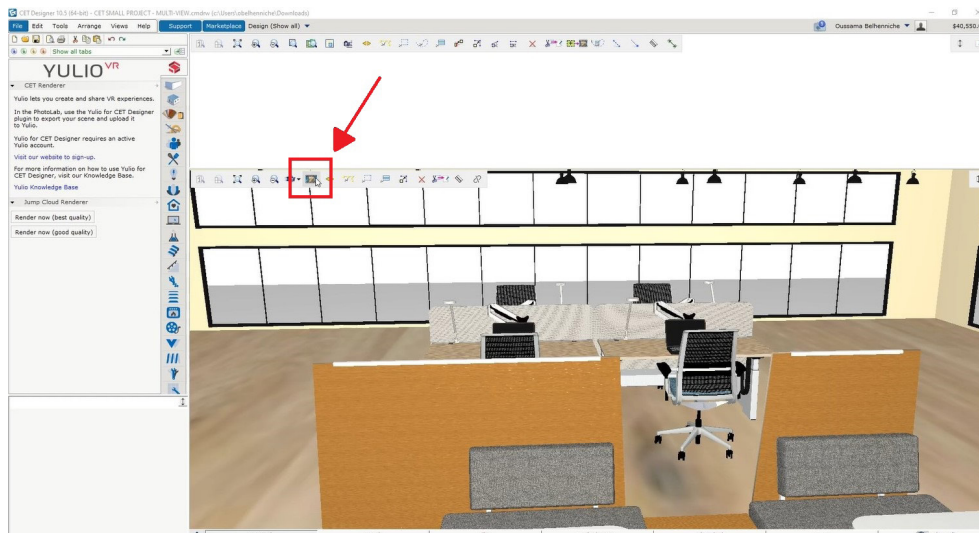


- Save your drawing.

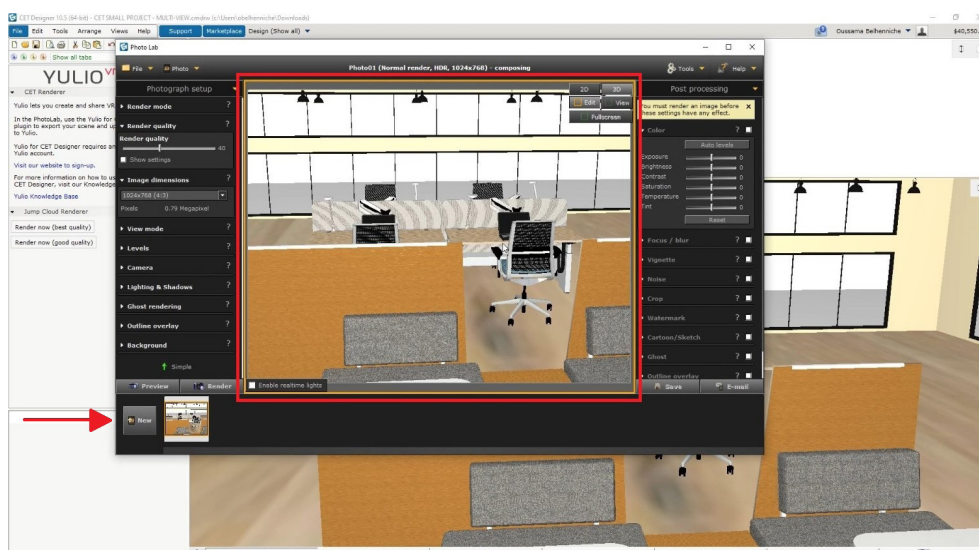
## 03

## PHOTO LAB - SET YOUR VIEWS

- Open the **Photo Lab** module from within your CET drawing.



- Zoom in or out in the middle of the image box to create your desired perspective.
- Click the **New** button to save your view.



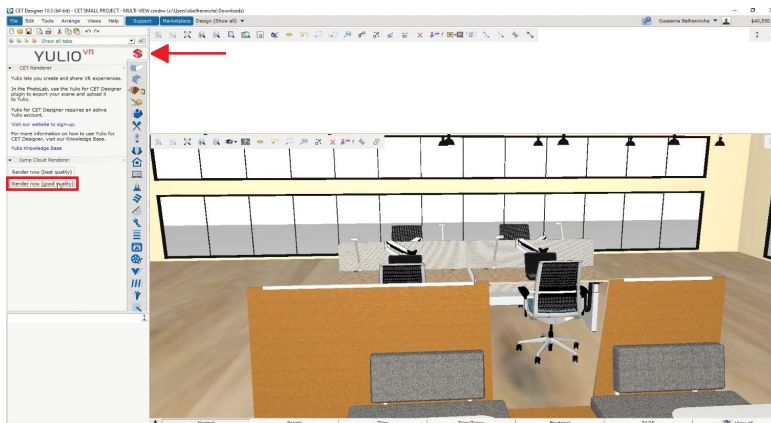
- You can create multiple VR scenes by repeating the steps above as many times as you want.



## 04

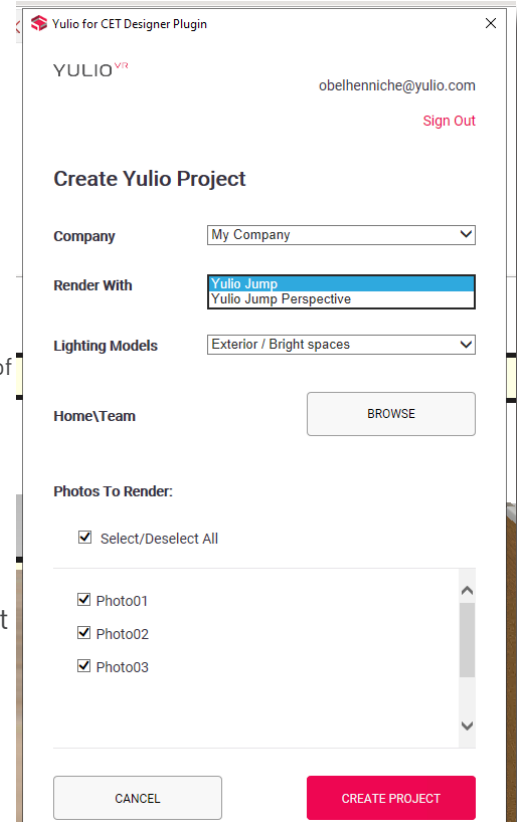
## RENDER WITH YULIO JUMP

- Exit Photo Lab and find the Yulio Extension in your Toolbar.
- You will have the option to render with **Good** or **Best** quality. Time to render will depend on which you select and the size/complexity of your project.



- Next, the Yulio Jump extension will pop up and provide additional options.
  - **Company:** Select the company/Yulio account you would like the project to upload to. Most of the time you only have access to 1 company and it will be listed as the default for you.
  - **Render With:** Select Yulio Jump or Yulio Jump Perspective.
  - **Lighting Models:** Select Exterior/Bright Space or Interior/Shaded Space. Learn more on the next page.
    - Exterior/Bright Spaces** - This lighting model relies on the sun to light the scene. If your scene is outdoors or has a lot of windows, this lighting model is the most accurate and will look the most realistic.
    - Interior/Shaded Spaces** - lighting model uses a special algorithm that combines sunlight with artificial ambient light. If your scene is fully enclosed or has only a few windows, use this lighting model.
  - **Home/Team:** Select the folder within your Yulio account you would like the VR project to be created in.
  - **Photos to Render:** Select the views you would like to render that you set up in Photo Lab.

- Once you have selected all your preferences, select **Create VR Project**.
- Your project will begin processing and be sent directly to your Yulio account. This should only take a couple minutes.



05

## RENDERING IS COMPLETE!

- If you rendered with **Yulio Jump Perspective**, your image files will be sent to you by email.
- If you rendered with **Yulio Jump**, your project will begin processing and be sent directly to your Yulio account. For Yulio Jump, click the **View in Yulio** button to go to the project page in Yulio. On the project page you can adjust the file name, enhance with hotspots, share and view in VR.

\*Processing time varies depending on the quality and size of your model.

- That's it! Your VR project is now ready to view, share and enhance with hotspots.



06

## UPLOAD TO YULIO

- To upload the Yulio 360 Panorama file directly to your Yulio account you will need to first register yourself on Yulio.com.
- Note: Internet access is required to complete the following step:
  - Create a 30 Day Free Trial or full access paid account at [www.yulio.com/create/pricing](http://www.yulio.com/create/pricing)

07

## AUTHENTICATE THE YULIO FOR CET DESIGNER PLUGIN

- Within the CET Designer's Photo Lab:
  - Once the Yulio 360 Panorama cubemap file is created click the **Export > Export to Yulio** button.
  - Enter your email address - the one you used to create your Yulio account - and click the **Connect to Your Account** button.
  - Check your email for the plugin activation email (also check your junk folder) and click the **Confirm Plugin Activation** button in the email.
  - You are now authenticated to upload Yulio 360 Panorama cubemap files directly to Yulio from CET Designer's Photo Lab.

