

WEBINAR

spotlight on sanctions

understanding **beneficial ownership**
to uncover **hidden sanctions risk**

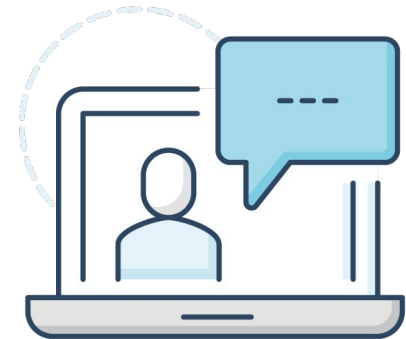
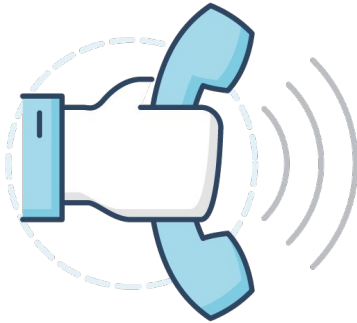


with **Samantha Wolreich CAMS**
Special Lists Director, Dow Jones Risk & Compliance

webinar brought to you by



housekeeping



Webinar Host



Henry Balani

**Head of Solution Consulting at Encompass
Corporation**

Agenda

- **Introductions**
- **Spotlight on Sanctions**
- **Interview**
- **Audience Q&A**

Today's Speaker



Samantha Wolreich

Special Lists Director, Dow Jones Risk & Compliance.

- Managed the global sanctions team since joining Dow Jones in 2016.
- Worked in business intelligence for a Big 4 consultancy
- Previously political risk analyst advising insurers in Lloyds of London.
- Certified Anti-Money Laundering Specialist
- MA in Russian Politics from the School of Slavonic and Eastern European Studies, University College London
- BA in German and Russian from the University of Nottingham.

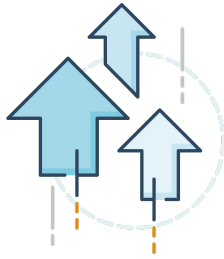
What effective compliance involves

Current sanctions environment is the most active and complex it has ever been.

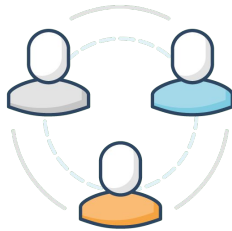
Essential components of sanctions compliance programme:

- (1) management commitment
- (2) responsible person
- (3) risk assessment
- (4) policies & procedures
- (5) internal controls
- (6) testing and auditing
- (7) training

What effective compliance involves



Ensuring effectiveness in practice

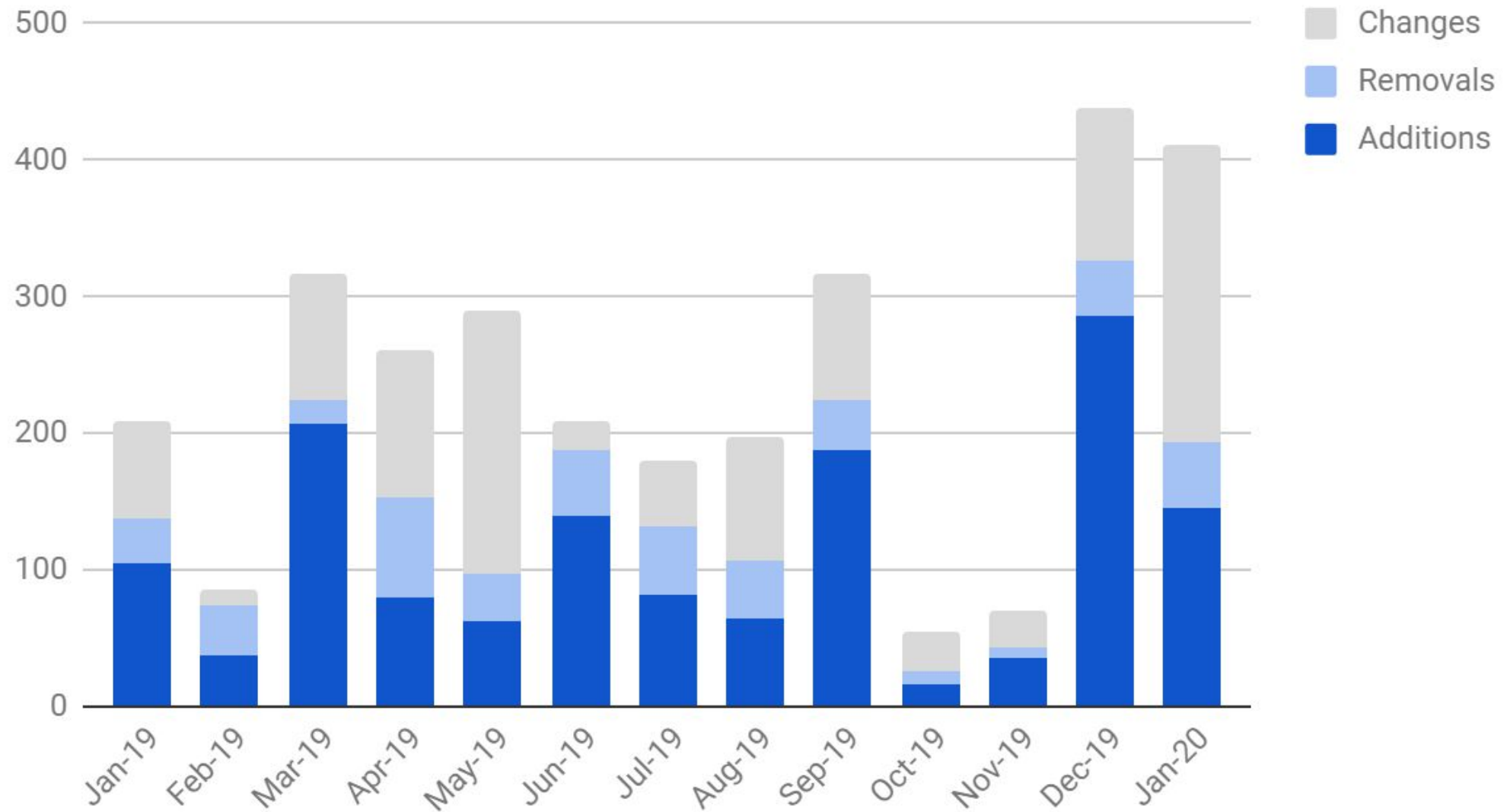


Right people, processes and tools to identify risks



Data: complete, accurate and up to date

Additions, Removals and Changes to OFAC, UN, EU and HMT lists



Challenges

Variety of sanctions targets

Diversity in target jurisdictions and sectors

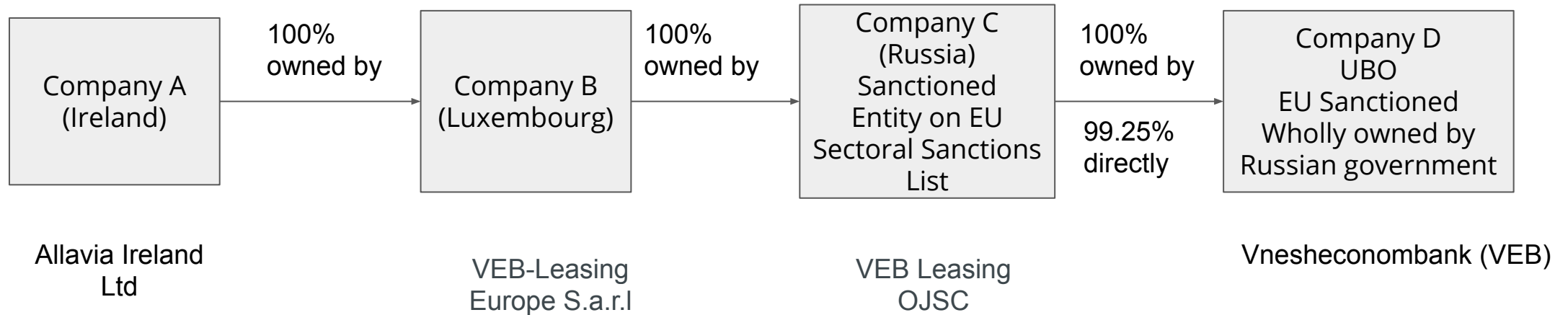
Widening and increasingly complex scope of sanctions measures

Sanctions evasion techniques becoming increasingly sophisticated

Understanding Corporate Ownership

Case study 1:

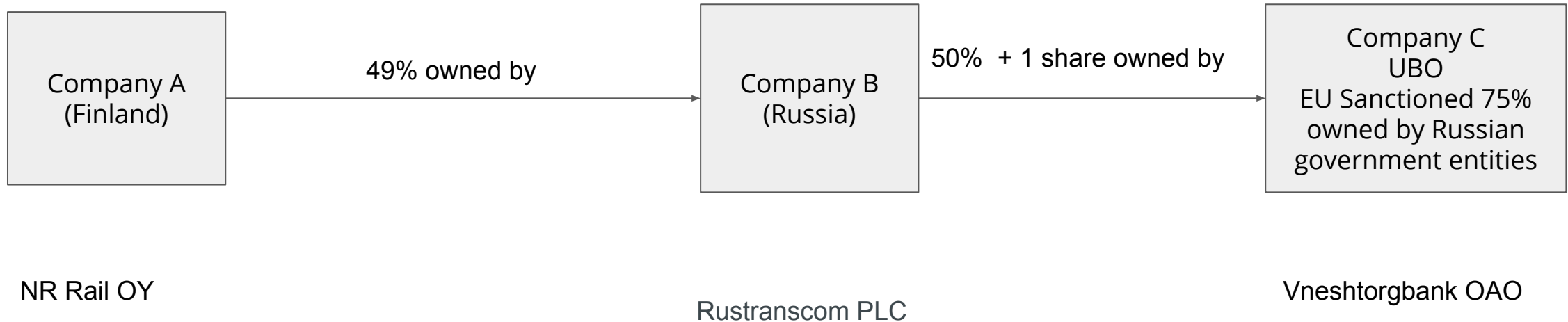
Identifying sanctioned owners and foreign government involvement



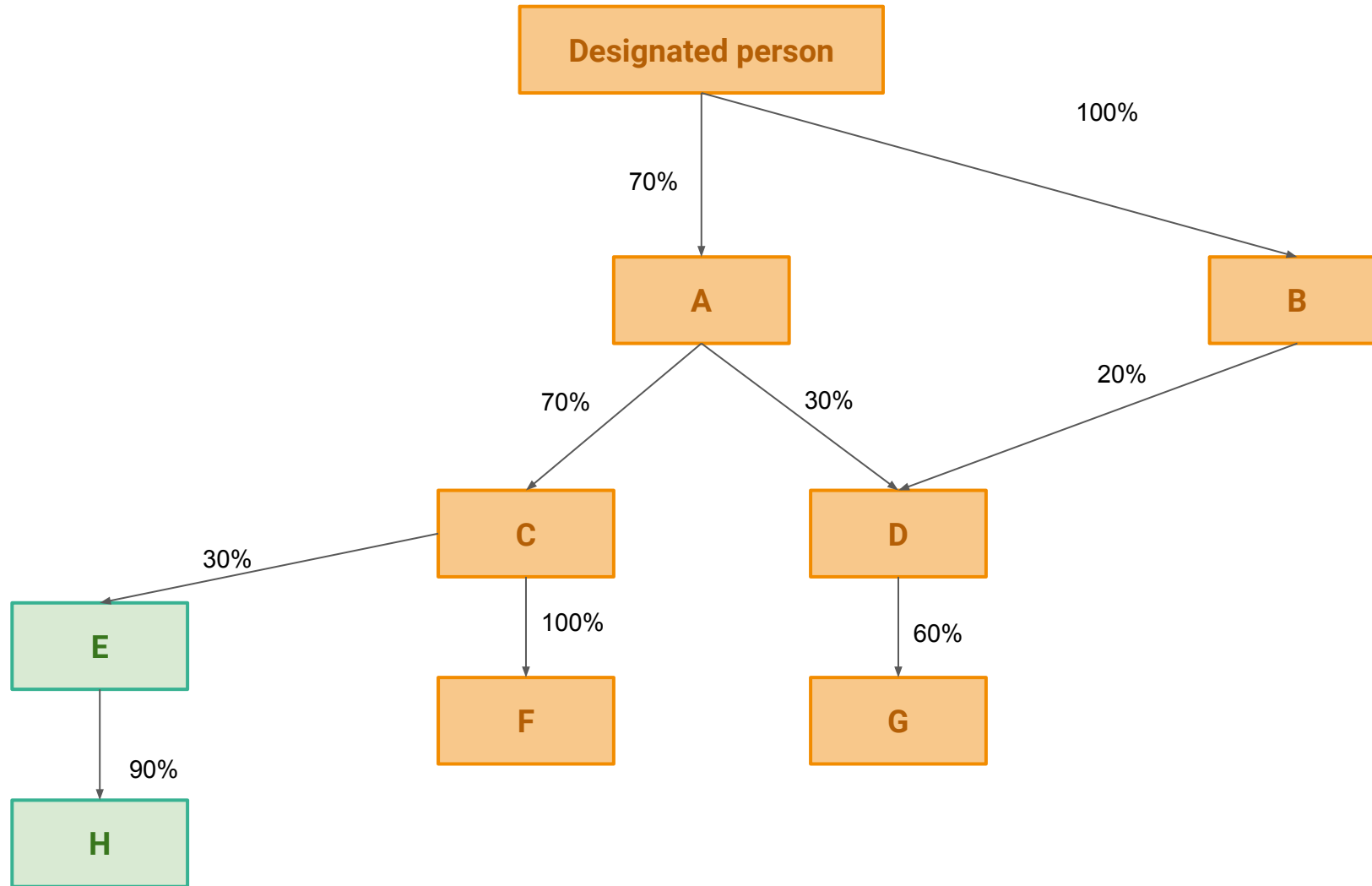
Understanding Corporate Ownership

Case study 2:

Identifying ownership just below sanctions threshold



Ownership aggregates downwards



RegTech

- Regulatory expectation
- More effective use of resources
- Streamline end-to-end process and provide audit trail
- Consolidate data
- Industry maturing: focus on UX and bespoke solutions



Interview with

Henry Balani and Samantha Wolreich



any questions?



thank you!



encompasscorporation.com



webinar brought to you by

