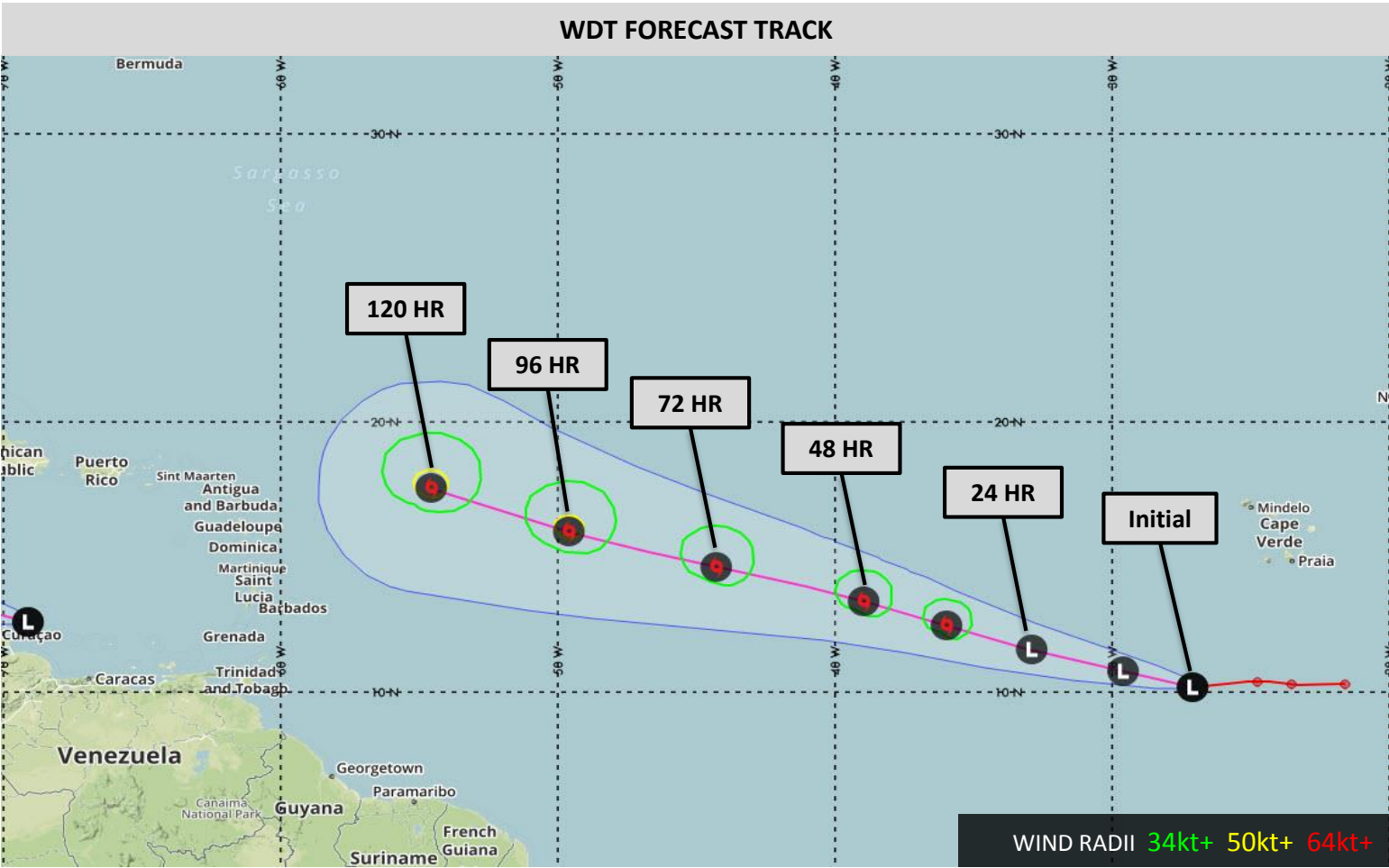


**Invest 99L Significant Tropical Disturbance Advisory #4**

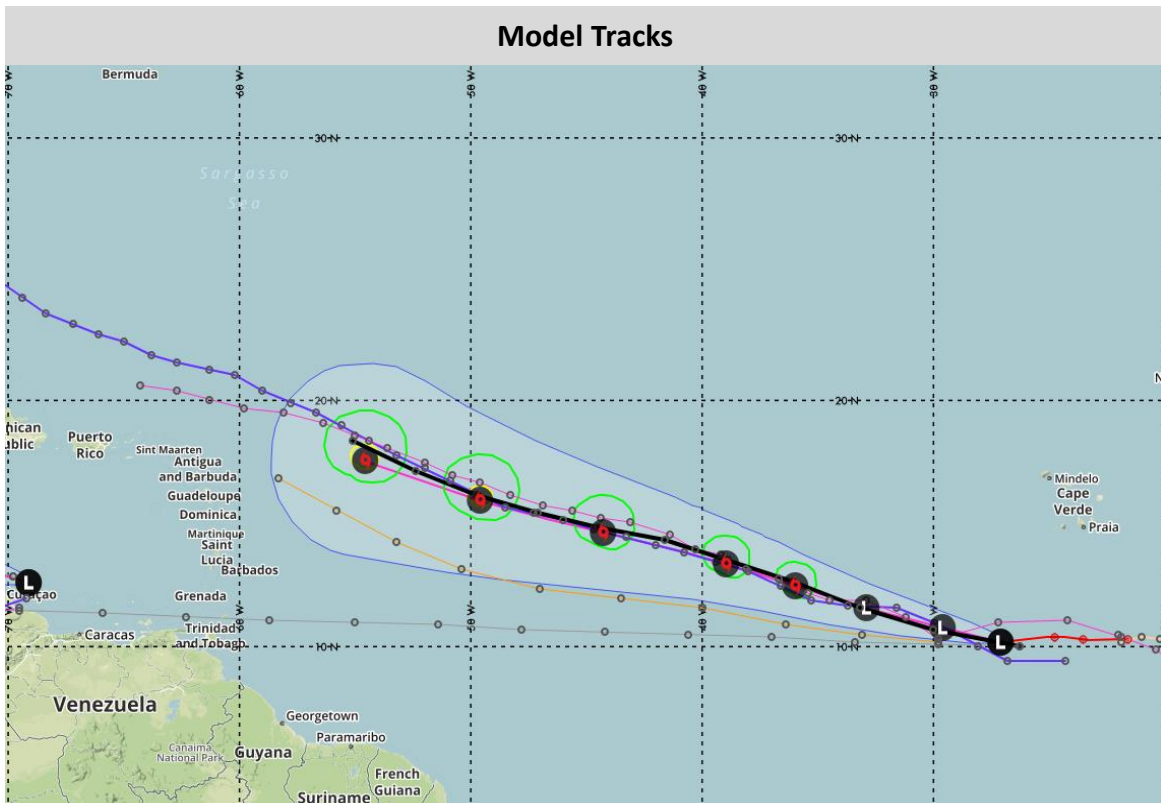
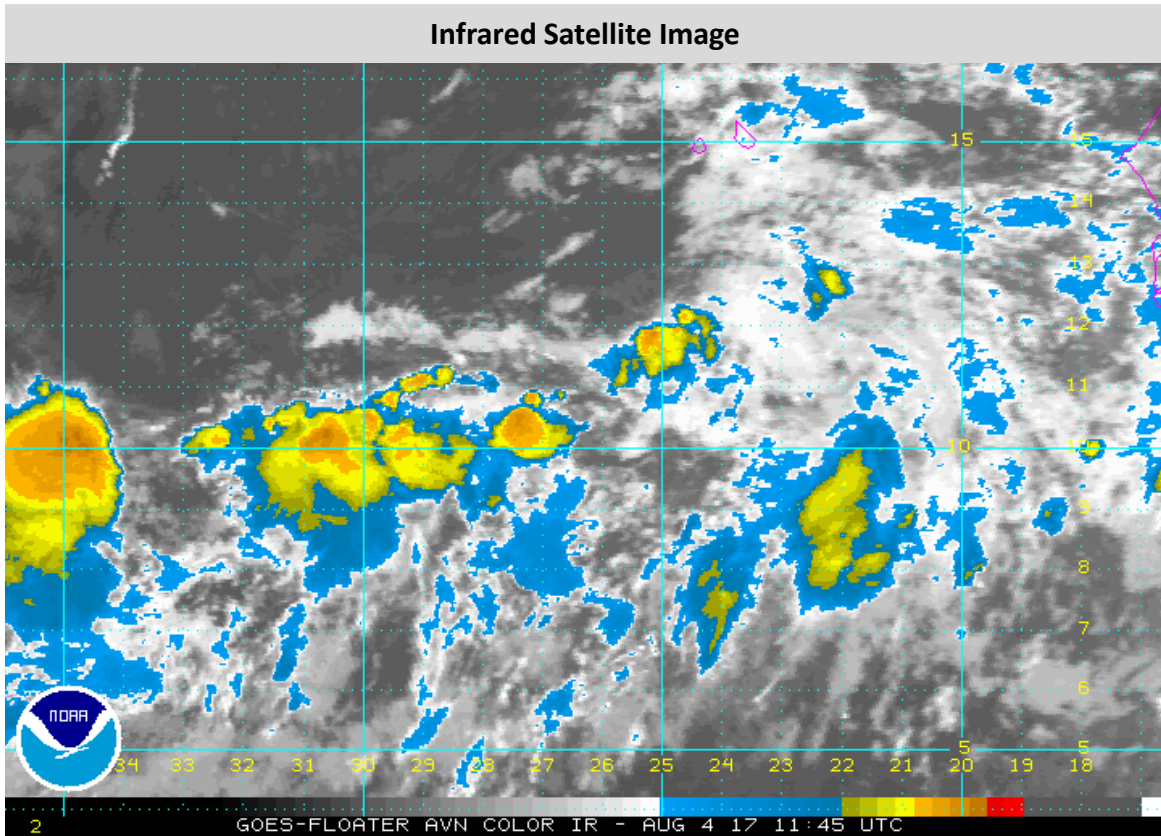
Effective: August 4, 2017 1500 UTC


<b>Estimated Center Position</b>	10.2N 27.1W (1913 nm E of Barbados)
<b>Current Movement</b>	WNW at 18 Knots
<b>Sustained Winds/Gusts</b>	25 Knots / 35 Knots
<b>Threat of TD or TS Development</b>	80%
<b>Forecast Discussion</b>	Invest 99L consists of a tropical wave moving quickly westward while producing disorganized shower and thunderstorm activity. Conditions in the immediate vicinity of 99L are favorable for strengthening, and there is still a high threat of further development over the next few days while it tracks west-northwest. There is an area of strong wind shear to the west that may inhibit development, but most model guidance shows at least modest strengthening into a tropical storm through the next 5 days.



**WDT Forecast Positions and Max Winds**

Track Forecast Confidence: Average				Intensity Forecast Confidence: Below Average			
Date	Forecast Time/Hour		Position	Sustained Winds		Saffir-Simpson Scale	
Fri	Aug 4	1500 UTC	Initial	10.2N 27.1W	25 KT	30 MPH	N/A
Sat	Aug 5	0000 UTC	12 Hour	10.8N 29.6W	30 KT	35 MPH	N/A
Sat	Aug 5	1200 UTC	24 Hour	11.6N 32.9W	30 KT	35 MPH	TD
Sun	Aug 6	0000 UTC	36 Hour	12.5N 36.0W	35 KT	40 MPH	TS
Sun	Aug 6	1200 UTC	48 Hour	13.4N 39.0W	40 KT	45 MPH	TS
Mon	Aug 7	1200 UTC	72 Hour	14.7N 44.3W	45 KT	50 MPH	TS
Tue	Aug 8	1200 UTC	96 Hour	16.0N 49.6W	50 KT	60 MPH	TS
Wed	Aug 9	1200 UTC	120 Hour	17.6N 54.6W	50 KT	60 MPH	TS



 WDT's next advisory will be issued at 2100 UTC