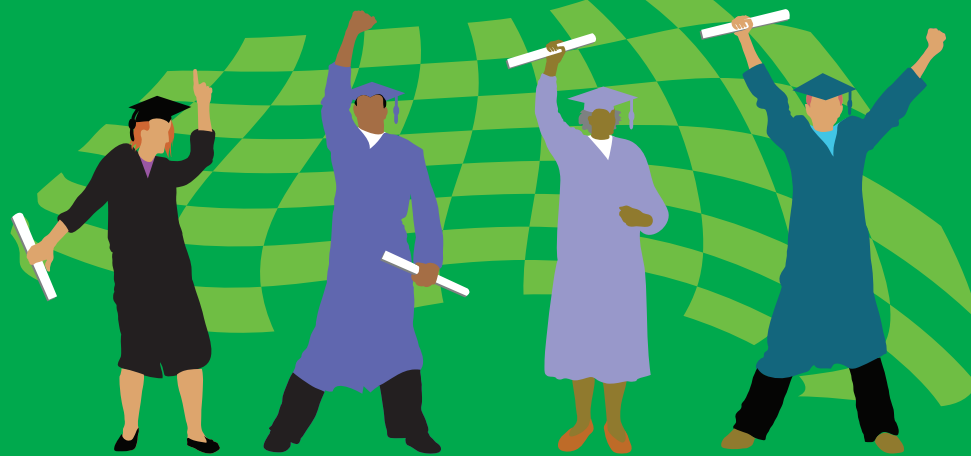


# BENEFITS OF MEMBERSHIP



*CAEL is more of a movement than an organization. Our members are the backbone, driving us forward to fulfill our mission. By becoming a CAEL member, you are taking a stance for adult students at your institution and beyond. You'll access special reports, research and webinars that will empower you to improve your adult programs and be the voice for the many adult students who think they are alone in their quest for a degree.*

## Visit Our Website



Go to [www.cael.org](http://www.cael.org) to examine our research on adult learning, and view upcoming events and webinars.

## JOIN OUR NETWORK

Connect with others who have a passion for adult learning by attending CAEL's array of online and in-person events. Meet the best minds in adult learning, both inside and outside of higher education, at CAEL's annual conference. Search for, and connect with, other CAEL members on our members-only website. Keep in touch with the latest news and share your challenges on CAEL's LinkedIn Groups.

## UNDERSTAND THE NEEDS OF ADULT LEARNERS

Through the CAEL Forum & News, our members-only publication, learn more about the needs of adult learners and innovations designed to help this population succeed. Receive free or discounted rates for professional development and certification programs that decode adult learning trends, demystify Prior Learning Assessment, explain Competency-Based Education, transform advising to better serve adult students and more. Discounts are also available for CAEL consulting services and the Adult Learner 360 survey toolkit.

## HOW TO BECOME A CAEL MEMBER

Apply online at [www.cael.org/membership](http://www.cael.org/membership), download a membership application, or complete the application on the reverse side of this page, and email or mail it to us.

# MEMBERSHIP APPLICATION FORM

Send application with payment to:

Memberships are good for 12 months from month of payment.

CAEL - Attention: Membership Services  
55 East Monroe, Suite 2710, Chicago, IL 60603

OR email to [membershipservices@cael.org](mailto:membershipservices@cael.org)

## TYPES OF CAEL MEMBERSHIP AND FEES

### *Institutional Membership*

For regionally accredited colleges & universities - Fees are based on the size of institution's enrollment according to Higher Education Directory.

#### Category of Membership

<input type="checkbox"/> 1-1000	<b>\$655</b>
<input type="checkbox"/> 1001-5000	<b>\$800</b>
<input type="checkbox"/> 5001 and over	<b>\$1015</b>
<input type="checkbox"/> Higher Ed Systems	<b>\$1065</b>
<input type="checkbox"/> International	<b>\$490</b>

### *Organizational Membership*

For Corporations, Healthcare Providers, Associations, Labor Unions and other Non-Academic Organizations

<input type="checkbox"/> For Profit	<b>\$1105</b>
<input type="checkbox"/> Non-profit	<b>\$615</b>

### *CAEL Individual Membership*

For Educators, Administrators, Managers, Graduate Students, Human Resource Professionals, and others interested in adult learning

<input type="checkbox"/> Individual	<b>\$180</b>
<input type="checkbox"/> Student (provide copy of student ID card)	<b>\$80</b>
<input type="checkbox"/> Retiree	<b>\$90</b>

### *CAEL Professional*

#### *Development Package*

Can only be purchased in conjunction with Institutional or System membership. Package is in effect for the duration of membership and can be pro-rated. Includes the following:

1. Two complimentary registrations for your staff to attend the annual CAEL Conference.
2. Two complimentary registrations for our workshop series offered four times per year.
3. Two complimentary registrations for our online Faculty Assessor training course.
4. Half off online Career and Education Advisor certification with Indiana University.
5. Private one hour online Q&A session with a CAEL Content Expert.

Total Package Value: **\$9,000+**  
Package Fee: **\$4,985**

Canadian/ International Memberships: Payment must be made in U.S. funds drawn against a U.S. bank.

## APPLICANT INFORMATION

Name of applicant	Title	Department
Organization	Web address	
Address	City	State Zip
Telephone number	E-mail address	

### Payment Information

- Check Enclosed (make checks payable to CAEL)\*  
 Purchase Order Enclosed

MasterCard  Visa  American Express

Credit Card No.: \_\_\_\_\_  
Expiration Date \_\_\_\_\_ Security Code \_\_\_\_\_

Signature: \_\_\_\_\_