

# Josam PRODUCTS

**STANDARD  
OF AMERICA**

JOSAM REPRESENTATIVES IN  
U. S. AND CANADA PAGE 28

JOSAM ADJUSTABLE SUPPORT FOR  
WALL CLOSETS AND URINALS PAGE 27

JOSAM ADJUSTABLE CLOSET OUTLET  
CONNECTIONS AND BENDS PAGE 26

JOSAM SHOCK ABSORBERS FOR  
QUIETING WATER HAMMER PAGE 25

JOSAM INTERCEPTORS FOR DENTAL AND  
SURGICAL SINKS, HAIR, LINT, PLASTER PAGE 24

JOSAM INTERCEPTORS FOR GREASE -  
NOT WATER-COOLED PAGES 22,23,25

JOSAM INTERCEPTORS FOR OIL,  
GASOLINE AND NAPHTHA PAGE 21

JOSAM ROOF DRAINS, EXPANSION JOINTS,  
AND VENT STACK SLEEVES PAGES 17,18,19

JOSAM SWIMMING POOL EQUIPMENT - INLETS,  
OUTLETS, GUTTERS, OVERFLOWS, EJECTORS PAGES 14,15,16

JOSAM BACKWATER SEWER VALVES  
A POSITIVE PROTECTION AGAINST BACKWATER PAGE 13

JOSAM GARAGE AND INDUSTRIAL TYPE FLOOR  
DRAINS WITH AND WITHOUT SEDIMENT CONTAINERS PAGES 4,5,6,9,10,  
11,12,20,21

JOSAM DOUBLE DRAINAGE FLOOR, SHOWER  
AND URINAL DRAINS PAGES 7,8,9,10,11,12

JOSAM NON-CLOG TRIPLE DRAINAGE SEDIMENT  
ARRESTING FLOOR DRAINS PAGES 3,4,5,6

JOSAM ENGINEERING SERVICE - DETAIL SHEETS  
STANDARD SPECIFICATION BROCHURES PAGE 2

## JOSAM MANUFACTURING CO.

MAIN SALES AND ENGINEERING OFFICE  
EMPIRE BUILDING CLEVELAND, OHIO

FACTORY AND FOUNDRY  
MICHIGAN CITY, INDIANA

*Branches in all Principal Cities*

**THERE ARE NO SUBSTITUTES FOR JOSAM PRODUCTS**



# ENGINEERING SERVICE

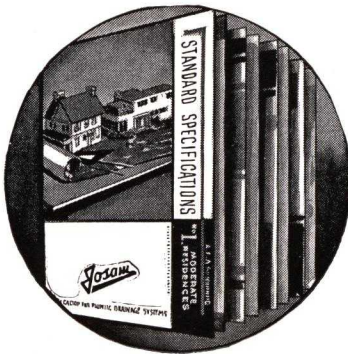
Years of practical experience . . . in designing and installing plumbing systems are available to you through the services of the Josam Engineering Staff. Hundreds of unusual drainage requirements have been satisfactorily met. Often, it has been necessary to design a special type of drain to fully meet the requirements and to provide the utmost protection for buildings and contents. Josam makes available to you exhaustive infor-

mation concerning the installations of the proper types of drainage facilities to meet troublesome situations.

To avail yourself of Josam Engineering Service, get in touch with the nearest Josam Representative listed on page 28, or write direct to Josam Engineering Department at Cleveland, Ohio. Give full details and whenever possible, send blueprints or sketches indicating conditions and type of building construction.

*Here's Something! . . . All Architectural Offices Should have these on File*

## JOSAM STANDARD SPECIFICATIONS FOR PLUMBING DRAINAGE SYSTEMS



Josam again initiates a service to architects with this series of "Standard Specification Brochures," for reference and guidance, giving plumbing drainage specifications for 119 types of buildings. These reference books are something specification men will readily appreciate . . . an authoritative means of checking plumbing drainage specifications . . . books they'll find a distinct asset in their work . . . because all relative and needed specification data is presented between two covers. For the first time complete authoritative information on plumbing drainage system specifications is now available.

*Ask for STANDARD SPECIFICATIONS for type of building on which you are now engaged*

Moderate Residences  
Residential Buildings (Apartments and Hotels)  
Governmental and Administrative Buildings

Educational and Scientific Buildings  
Industrial and Manufacturing Buildings  
Hospital and Remedial Buildings

Commercial and Mercantile Buildings  
Social and Recreational Buildings  
Transportation and Storage Buildings  
Religious and Funerary Buildings

Exhibition and Exposition Buildings  
Bathing and Swimming Pools  
Highway and Non-sheltered Structures



## JOSAM DETAIL SHEETS

Detail Sheets giving practical installation and engineering information for various Josam Products, are available to architects and engineers, upon request. These Detail Sheets show all up-to-the-minute improvements in Josam Products. Whenever additional detail sheets are prepared, they will be forwarded to architects and engineers who file a request for them, to the Josam Engineering Department, Cleveland, Ohio.

**AN EXCELLENT WAY TO DETERMINE AND APPRECIATE THE REFERENCE AND GUIDANCE VALUE OF JOSAM STANDARD SPECIFICATIONS AND JOSAM DETAIL SHEETS, IS TO APPLY THESE SERVICES TO YOUR PRESENT PROJECTS. SEND IN YOUR REQUEST TODAY, TO**

**JOSAM MANUFACTURING COMPANY  
ENGINEERING DEPARTMENT, EMPIRE BUILDING, CLEVELAND, OHIO**

**JOSAM NON-CLOG TRIPLE DRAINAGE SEDIMENT ARRESTING FLOOR DRAINS**  
**Maintain Flow from Floor Surface at All Times**

*The Non-clog Sediment Container Prevents either Sediment or Floating Solids from Entering Drain Body or Channels of Auxiliary Flow*

Josam Non-clog Drains are a definite improvement in Sediment Arresting types, to the extent that surface flow is maintained at all times, and all solids, particularly floating material, are intercepted.

Flooded floors resulting from clogged drains, traps or pipes, often create decidedly unsanitary conditions,

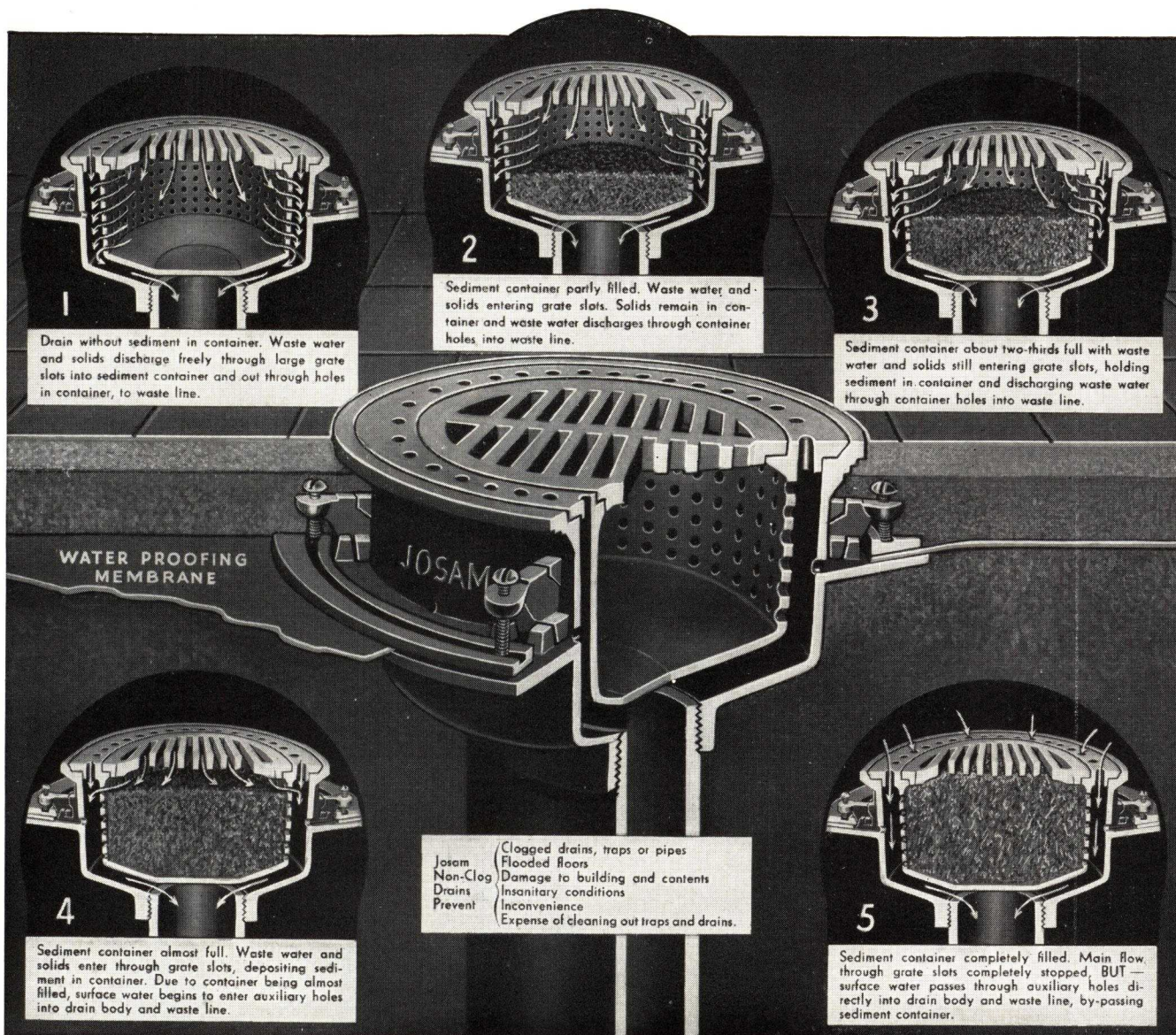
as well as damage to buildings and contents, besides the inconvenience and expense of cleaning out traps and drains. Josam Non-clog Drains prevent such occurrences.

Assembly is foolproof as it is compulsory to install the container which supports grate, before grate can be installed.

**GENERAL APPLICATIONS**

- |                       |                          |                     |                       |
|-----------------------|--------------------------|---------------------|-----------------------|
| Industrial Plants     | Warehouses               | Areaways            | Toilet and Wash Rooms |
| Boiler and Coal Rooms | Basement Storage Rooms   | Yards and Driveways | Large Kitchens        |
| Ash Pits              | Basement Equipment Rooms | Garage Floors       | Swimming Pool Outlets |
|                       |                          | Residence Basements |                       |

Collecting and salvaging materials discharged with waste water in packing plants.  
 Intercepting floating material, such as bottle caps in dairies.



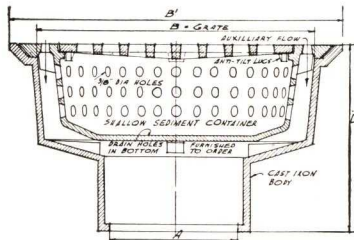


GENERAL APPLICATIONS

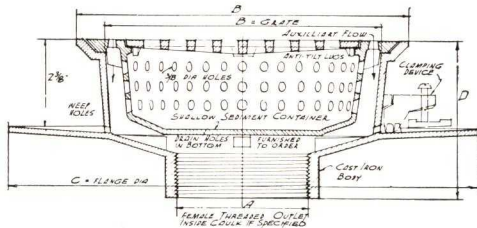
- 
- Areaways
- Basements
- Storage Rooms
- Basement Equipment Rooms
- Toilet and Wash Rooms
- Boiler Rooms
- Coal Rooms
- Yards
- Driveways
- Ash Pits
- Large Kitchens
- in
- Residences
- Warehouses
- Industrial Plants
- Public Buildings
- Hotels
- Institutions
- Breweries
- Clubs

See the Following Pages for Other Types of Non-Clog Triple Drainage Drains

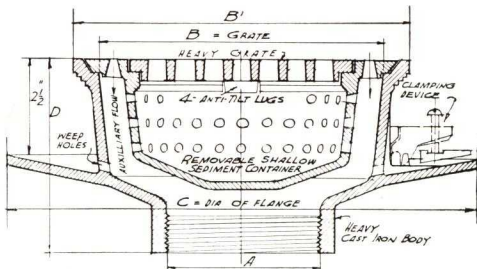
# JOSAM NON-CLOG TRIPLE DRAINAGE FLOOR DRAINS



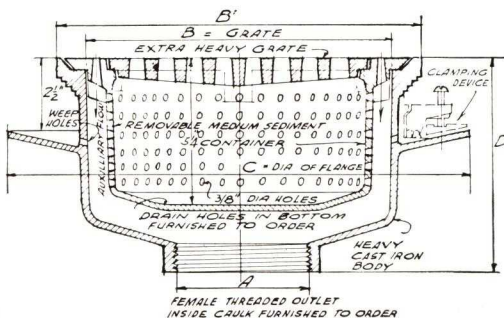
Series 5400X



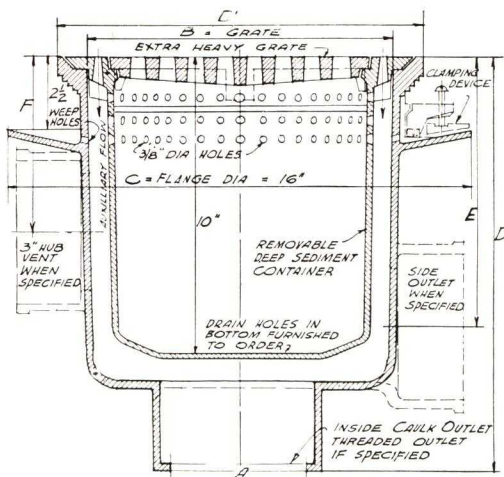
Series 5410



Series 5420



Series 5440



Series 5600X

## SERIES 5400X

Light Service type, cast iron japanned, without double drainage flange, with non-clog sediment container, inside caulk or female threaded bottom outlet.

## SERIES 5410

Light service triple drainage type, cast iron japanned with non-clog shallow sediment container, female threaded or inside caulk bottom outlet.

## SERIES 5420

Medium service, triple drainage type, cast iron japanned, with non-clog shallow sediment container, female threaded or inside caulk bottom outlet.

## SERIES 5440

Heavy duty triple drainage type, cast iron japanned, with non-clog medium sediment container, female threaded or inside caulk bottom outlet.

## SERIES 5600X

Extra heavy triple drainage type, cast iron japanned, with non-clog deep sediment container, inside caulk or female threaded bottom outlet, 3-in. hub local vent when so ordered.

### OPTIONAL

Galvanized Iron—Brass Top—All Brass—Clamping Device—Combined Trap—Backwater Valve—Square Top—Hinged Grate—Primer Tapping—Side Outlet—Bottom drain holes in sediment container.

Type	Dimensions in inches						Weight, lbs.
	A Outlet	B Grate	B'	C	D	E	
<b>SERIES 5400X</b>							
5402X	2	7 <sup>3</sup> / <sub>8</sub>	9	.....	5	.....	14
5403X	3	7 <sup>3</sup> / <sub>8</sub>	9	.....	5	.....	14
5404X	4	7 <sup>3</sup> / <sub>8</sub>	9	.....	5	.....	14
<b>SERIES 5410</b>							
5412	2	7 <sup>3</sup> / <sub>8</sub>	9	12 <sup>1</sup> / <sub>2</sub>	4 <sup>1</sup> / <sub>2</sub>	.....	20
5413	3	7 <sup>3</sup> / <sub>8</sub>	9	12 <sup>1</sup> / <sub>2</sub>	4 <sup>1</sup> / <sub>2</sub>	.....	20
5414	4	7 <sup>3</sup> / <sub>8</sub>	9	12 <sup>1</sup> / <sub>2</sub>	4 <sup>1</sup> / <sub>2</sub>	.....	20
5422	2	7 <sup>1</sup> / <sub>2</sub>	9	12 <sup>1</sup> / <sub>2</sub>	5	.....	22
5423	3	7 <sup>1</sup> / <sub>2</sub>	9	12 <sup>1</sup> / <sub>2</sub>	5	.....	22
5424	4	7 <sup>1</sup> / <sub>2</sub>	9	12 <sup>1</sup> / <sub>2</sub>	5	.....	22
<b>SERIES 5440</b>							
5443	3	10 <sup>3</sup> / <sub>4</sub>	12 <sup>1</sup> / <sub>2</sub>	16	7 <sup>1</sup> / <sub>8</sub>	.....	58
5444	4	10 <sup>3</sup> / <sub>4</sub>	12 <sup>1</sup> / <sub>2</sub>	15	7 <sup>1</sup> / <sub>8</sub>	.....	58
5445	5	10 <sup>3</sup> / <sub>4</sub>	12 <sup>1</sup> / <sub>2</sub>	15	7 <sup>1</sup> / <sub>8</sub>	.....	58
5446	6	10 <sup>3</sup> / <sub>4</sub>	12 <sup>1</sup> / <sub>2</sub>	16	7 <sup>1</sup> / <sub>8</sub>	.....	58
<b>SERIES 5600X</b>							
5603X	3	10 <sup>3</sup> / <sub>4</sub>	12 <sup>1</sup> / <sub>2</sub>	16	13 <sup>1</sup> / <sub>2</sub>	9 <sup>1</sup> / <sub>2</sub>	86
5604X	4	10 <sup>3</sup> / <sub>4</sub>	12 <sup>1</sup> / <sub>2</sub>	16	13 <sup>1</sup> / <sub>2</sub>	9	86
5605X	5	10 <sup>3</sup> / <sub>4</sub>	12 <sup>1</sup> / <sub>2</sub>	16	13 <sup>1</sup> / <sub>2</sub>	8 <sup>1</sup> / <sub>2</sub>	86
5606X	6	10 <sup>3</sup> / <sub>4</sub>	12 <sup>1</sup> / <sub>2</sub>	16	13 <sup>1</sup> / <sub>2</sub>	8	86



GENERAL APPLICATIONS

- Yards
- Roadways
- Washracks
- Driveways
- Boiler Rooms
- Ash Pits

In

- Garages
- Industrial Plants
- Laundries
- Packing Plants
- Warehouses
- Public Buildings
- Breweries
- Hotels

# JOSAM NON-CLOG TRIPLE DRAINAGE FLOOR DRAINS

## SERIES 5700X

Heavy duty, triple drainage type, cast iron japanned, with non-clog medium sediment container, inside caulk or female threaded bottom outlet, 14 in. or 18 in. grate.

## SERIES 5730X

Extra heavy duty triple drainage type, cast iron japanned, with non-clog deep sediment container, inside caulk or female threaded bottom outlet, 14 in. or 18 in. grate.

### OPTIONAL

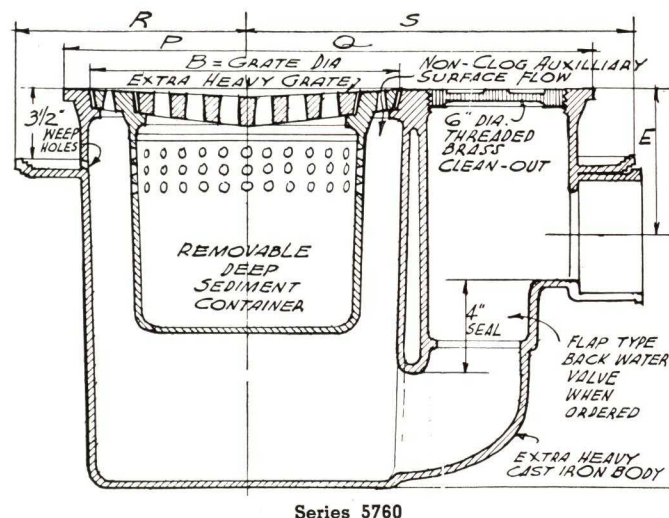
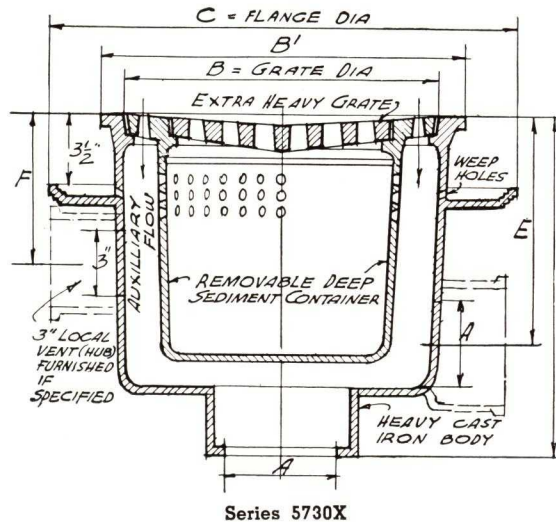
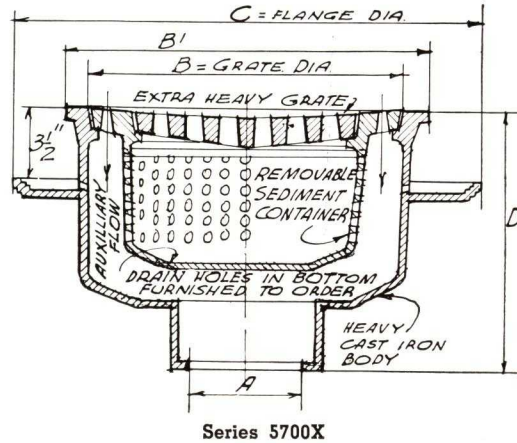
Galvanized iron—brass top—clamping device—combined trap—backwater valve—square top—female threaded, hub or spigot side outlet—hinged grate—primer tapping—bottom drain holes in sediment container—3 in. hub local vent on Series 5730X.

## SERIES 5760

Extra heavy duty triple drainage type, combined drain and trap with 6 in. threaded brass top cleanout, cast iron japanned, with non-clog deep sediment container, hub outlet, 14 in. or 18 in. grate.

### OPTIONAL

Galvanized iron—brass top—clamping device—flap type backwater valve—hinged grate—primer tapping—bottom drain holes in sediment container—3-in. hub local vent.



Type	Dimensions in inches							Weight, lbs.
	A outlet	B grate	B'	C	D*	E*	F*	
<b>SERIES 5700X</b>								
5703X	3	14	16	22	12			164
5704X	4	14	16	22	12			164
5705X	5	14	16	22	12			164
5706X	6	14	16	22	12			164
5713X	3	18	21	27	15			270
5714X	4	18	21	27	15			270
5715X	5	18	21	27	15			270
5716X	6	18	21	27	15			270
5718X	8	18	21	27	15			270

Type	Dimensions in inches							Wght. lbs.
	A outlet	B grate	B'	C	D*	E*	F*	
<b>SERIES 5730X</b>								
5733X	3	14	16	22	15	10 1/2	6 1/2	200
5734X	4	14	16	22	15	10	6 1/2	200
5735X	5	14	16	22	15	9 1/2	6 1/2	200
5736X	6	14	16	22	15	9	6 1/2	200
5743X	3	18	21	27	18	16	6 1/2	320
5744X	4	18	21	27	18	15 1/2	6 1/2	320
5745X	5	18	21	27	18	15	6 1/2	320
5746X	6	18	21	27	18	14 1/2	6 1/2	320

\*Decrease 1 1/4 in. when furnished with female threaded outlet.

Type	Dimensions in inches									Wght., lbs.
	A outlet	B grate	D*	E*	P	Q	R	S		
<b>SERIES 5760</b>										
5762	2	14	18	7 3/4	7 3/4	15 1/4	11	17 1/2	230	
5763	3	14	18	7 1/4	7 3/4	15 1/4	11	17 1/2	230	
5764	4	14	18	6 3/4	7 3/4	15 1/4	11	17 1/2	230	
5772	2	18	18	7 3/4	10 1/2	17 1/2	13 1/2	20	360	
5773	3	18	18	7 1/4	10 1/2	17 1/2	13 1/2	20	360	
5774	4	18	18	6 3/4	10 1/2	17 1/2	13 1/2	20	360	

\*Add 1/2 in. when furnished with brass top.

See the Following Pages for Other Types of Non-Clog Triple Drainage Drains



# JOSAM DOUBLE DRAINAGE FLOOR, SHOWER AND URINAL DRAINS

GENERAL APPLICATIONS

SERIES 1400C  
AND  
SERIES 1700C

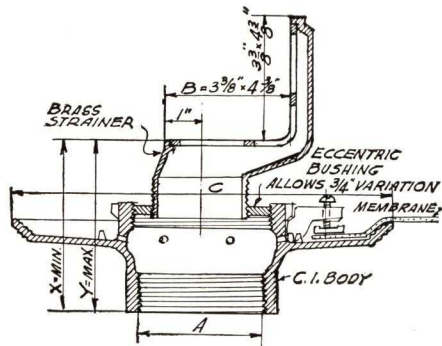
Built-up Shower Stalls  
Janitor's Closets  
Gutters  
Shower Cabinets

SERIES 2800A  
AND  
SERIES 3000

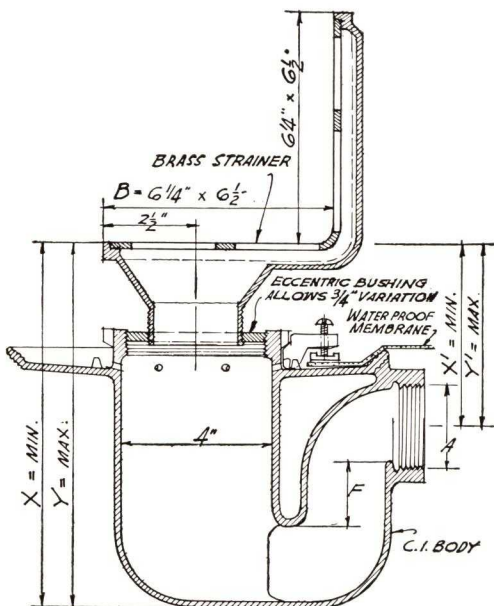
Urinal Stalls  
Shower Receptors  
in

Schools  
Hospitals  
Public Buildings  
Hotels  
Prisons  
Institutions

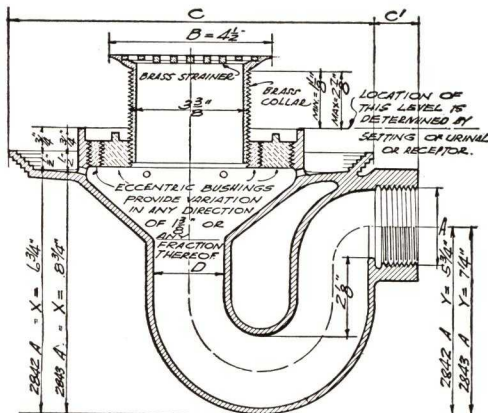
See the following pages for other types of floor drains



Series 1400C



Series 1700C



Series 2800A

## SERIES 1400C

Drain without trap. Threaded adjustable brass angle strainer provides means for meeting variation in level or thickness of floors. Eccentric bushing provides lateral adjustment in locating strainer to predetermined line. Furnished with or without clamping device.

Cast iron japanned body, adjustable N.P. brass angle strainer, brass eccentric bushing, female threaded outlet, unless otherwise specified. Outlet also furnished for inside caulking or with adaptor for spigot connection when so specified.

## SERIES 1700C

Combined drain and trap. Threaded adjustable brass angle strainer provides means for meeting variation in level or thickness of floors. Eccentric bushing provides lateral adjustment in locating strainer to predetermined line. Furnished with or without clamping device.

Cast iron japanned body, adjustable N.P. brass angle strainer, brass eccentric bushing, female threaded outlet, unless otherwise specified. Outlet also furnished with adaptor for hub or spigot connection when so specified.

Type	Dimensions in inches								Weight, lbs.
	A Out- let	B Strainer		C	F	X	Y	X' Y'	
		Size	Type						

### SERIES 1400C

1401 1/2	1 1/2	3 3/8 x 4 3/8	42K	9 1/4	.....	3 3/4	4 1/2	.....	9
1402	2	3 3/8 x 4 3/8	42K	9 1/4	.....	3 3/4	4 1/2	.....	9
1403	3	3 3/8 x 4 3/8	42K	9 1/4	.....	3 3/4	4 1/2	.....	12
1404	4	3 3/8 x 4 3/8	42K	10 1/4	.....	3 3/4	4 1/2	.....	12
1411 1/2	1 1/2	6 1/4 x 6 1/2	43K	9 1/4	.....	3 3/4	5 1/2	.....	12
1412	2	6 1/4 x 6 1/2	43K	9 1/4	.....	3 3/4	5 1/2	.....	12
1413	3	6 1/4 x 6 1/2	43K	9 1/4	.....	3 3/4	5 1/2	.....	12
1414	4	6 1/4 x 6 1/2	43K	10 1/4	.....	3 3/4	5 1/2	.....	14

### SERIES 1700C

1701 1/2	1 1/2	3 3/8 x 4 3/8	42K	12	2 1/8	8 5/8	9 1/2	3 5/8	4 1/2	21
1702	2	3 3/8 x 4 3/8	42K	11 1/2	2 3/4	8 5/8	9 1/2	3	4 3/4	21
1703	3	3 3/8 x 4 3/8	42K	12 1/2	2 1/4	9 5/8	10 1/2	3 1/8	4 3/4	24 1/2
1704	4	3 3/8 x 4 3/8	42K	15 1/2	2 1/4	11 1/2	12 3/8	4 1/2	5 3/8	36
1711 1/2	1 1/2	6 1/2 x 6 1/4	43K	12	2 1/8	9 1/8	10 1/2	4 1/8	5 1/2	22
1712	2	6 1/2 x 6 1/4	43K	11 1/2	2 3/4	9 7/8	11 1/4	4 1/4	5 5/8	22
1713	3	6 1/2 x 6 1/4	43K	12 1/2	2 1/4	10 5/8	12	4 1/2	5 7/8	26
1714	4	6 1/2 x 6 1/4	43K	15 1/2	2 1/8	12 1/2	13 7/8	5 3/8	6 3/4	37

## SERIES 2800A

Especially adaptable when installation calls for two or more stalls. The double eccentric feature assures positive connection at receptor openings regardless of variations in roughing in. Threaded adjustable brass strainer provides means for meeting variation in level or thickness of floors. Strainers can be furnished to fit all standard makes of receptors.

Cast iron japanned body with double eccentric brass bushings, nickel plated adjustable brass strainer, recessed female threaded outlet, unless otherwise specified. Outlet also furnished with adaptors for hub or spigot connection when so specified. Also furnished with beehive or dome strainers.

Type	Dimensions in inches							Weight, lbs.
	A	B	C	C'	D	X	Y	

2842A	2	4 1/2	10 3/4	1 1/4	2	6 3/4	5 3/4	20
2843A	3	4 1/2	10 3/4	1 7/8	3	8 3/4	7 3/4	30

**Series 3000**—Identical in construction with Series 2800A except without trap. Has female threaded bottom outlet but can be furnished for inside caulking or with adaptor for spigot connection.



GENERAL APPLICATIONS

- Large Floor Areas
- Cold Storage Rooms
- Areaways
- Scale Pits
- Elevator Pits
- Basement Floors
- Promenade Decks
- Swimming Pool Outlets
- Corridors
- Large Kitchens
- Courts
- in
- Schools
- Dairies
- Packing Houses
- Warehouses
- Hospitals
- Public Buildings
- Prisons
- Institutions
- Breweries
- Clubs

# JOSAM DOUBLE DRAINAGE FLOOR DRAINS OR CESSPOOLS

## SERIES 510

Especially recommended where shallow floors call for a drain with a low overall height.

Cast iron japanned body, anti-tilting grate, female threaded outlet, unless otherwise specified.

## SERIES 530A

Extra heavy type for floors requiring large drainage facilities and especially desirable where floor is subjected to heavy trucking. Supplementary strainer prevents clogging of waste line. Cast iron body, extra heavy anti-tilting grate and perforated supplementary strainer, female threaded outlet unless otherwise specified.

## SERIES 550R

For use in shallow floors where construction requires a shallow side outlet drain.

Cast iron japanned body, anti-tilting grate, hub outlet, unless otherwise specified.

## SERIES 570JM

For use where a mastic flooring is used over old wood floors and construction requires a waterproofing membrane.

Cast iron japanned body, anti-tilting grate, female threaded outlet, flashing clamping device, unless otherwise specified.

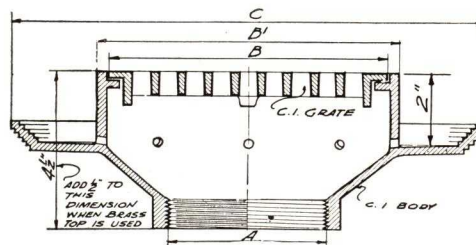
## SERIES 580S

For use where a drain with square top is desired.

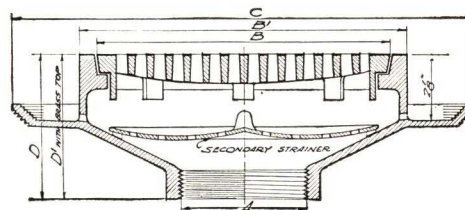
Cast iron japanned body, square frame and square grate, female threaded outlet, unless otherwise specified.

### OPTIONAL

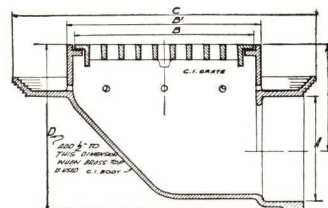
Galvanized iron or all brass body—brass, white metal or chrome plated top—threaded, inside caulk or spigot bottom outlet; threaded, hub or spigot side outlet, flashing clamping device—spun copper ball back water valve in bottom outlet drains.



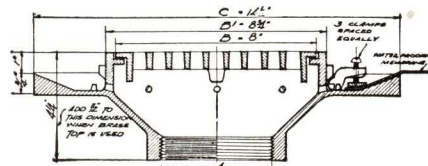
Series 510



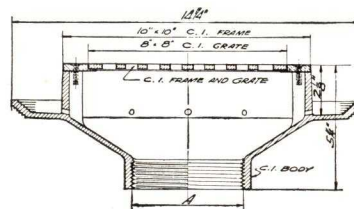
Series 530A



Series 550R



Series 570JM



Series 580S

Type	Dimensions in inches							Weight, lbs.
	A	B	B'	C	D	D'	E	
<b>SERIES 510</b>								
512	2	8	8 3/4	13 1/2	.....	.....	.....	18
513	3	8	8 3/4	13 1/2	.....	.....	.....	18
514	4	8	8 3/4	13 1/2	.....	.....	.....	18
524	4	11	12 3/8	17	.....	.....	.....	40
525	5	11	12 3/8	17	.....	.....	.....	40
526	6	11	12 3/8	17	.....	.....	.....	40
<b>SERIES 530A</b>								
532A	2	10	11	15	5	5 1/2	.....	40
533A	3	10	11	15	5	5 1/2	.....	40
534A	4	10	11	15	5	5 1/2	.....	40
544A	4	14	15 1/4	19 1/4	5	5 5/8	.....	68
545A	5	14	15 1/4	19 1/4	5	5 5/8	.....	70
546A	6	14	15 1/4	19 1/4	5	5 5/8	.....	70
548A	8	14	15 1/4	19 1/4	5 1/4	5 7/8	.....	75
<b>SERIES 550R</b>								
552R	2	8	8 3/4	13 1/2	7	.....	4 3/4	30
553R	3	8	8 3/4	13 1/2	7	.....	4 1/4	30
554R	4	8	8 3/4	13 1/2	8	.....	4 3/4	33
555R	5	11	12 3/8	17	9 3/4	.....	6 1/2	55
556R	6	11	12 3/8	17	9 3/4	.....	6	55

See the following pages for other types of floor drains



# JOSAM FLOOR, AREAWAY AND GUTTER DRAINS

GENERAL APPLICATIONS

**SERIES**  
560AG  
660  
760B  
5320X

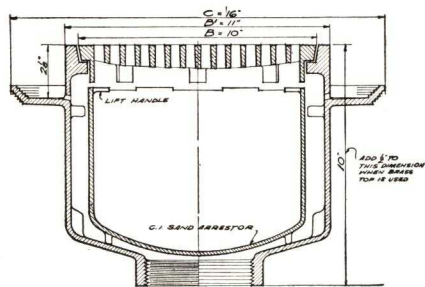
- Boiler Rooms
- Coal Rooms
- Ash Pits
- Areaways
- Basements
- Driveways
- Scale Pits
- Elevator Pits
- Large Kitchens
- Cold Storage Rooms
- Bottling Rooms
- Courts

**SERIES**  
1500  
1600

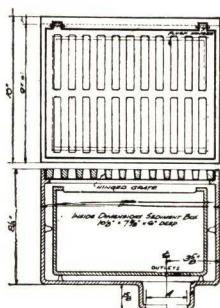
- Gutters
- Parapet Balconies

- Terraces in
- Schools
- Dairies
- Laundries
- Warehouses
- Packing Houses
- Public Buildings
- Prisons
- Institutions
- Garages
- Industrial Plants

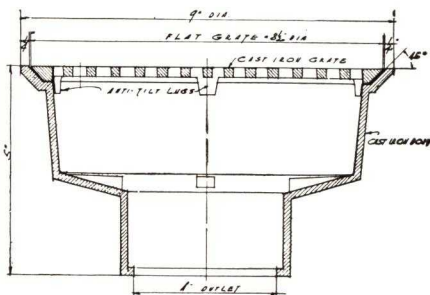
See the following pages for other types of floor Drains



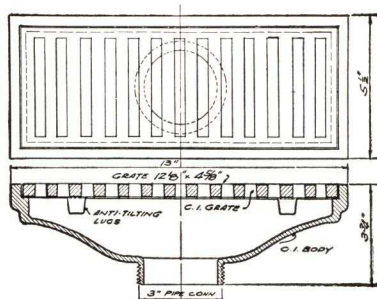
Series 560AG



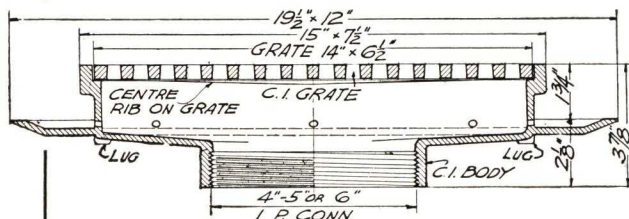
Series 760B



Series 5320X



Series 1500



Series 1600

## SERIES 560AG

For use where a heavy duty drain with an easily removable sediment bucket is required. Sediment bucket has substantial grips which enable it to be easily lifted out for cleaning. This drain is of sufficient strength to withstand heavy trucking. Heavy cast iron joggled body, anti-tilting grate, sediment bucket, female threaded outlet, unless otherwise specified.

**Series 660**—Identical in design with Series 560AG except that Series 660 is larger and of heavier construction.

## SERIES 760B

A bucket type drain to prevent foreign matter in floor drainage from entering waste lines, and where construction does not require a trapped drain.

Sediment bucket has rounded corners which eliminate fouling, and is equipped with hand grips permitting easy removal for emptying. Hinged grate is of sufficient strength to withstand heavy trucking.

Heavy cast iron joggled body, heavy flush hinged grate, sediment bucket, bottom outlet for inside caulking, unless otherwise specified.

## SERIES 5320X

For use where a moderately priced drain is desired in areaways, basements and sub-basements.

Cast iron joggled body, removable combined dome strainer and sediment cup, outlet for inside caulking, unless otherwise specified.

**Series 5300**—Same as 5320X except with convex grate.

**Series 5200X**—Same as 5320X except with dome strainer and sediment cup.

## SERIES 1500

Heavy cast iron joggled body, anti-tilting rectangular grate, male threaded outlet, unless otherwise specified.

## SERIES 1600

Heavy cast iron joggled body, anti-tilting rectangular grate, female threaded outlet, unless otherwise specified.

## OPTIONAL

Galvanized or all brass body—brass, white metal or chrome plated top—female threaded inside caulk or spigot bottom outlet, female threaded hub or spigot and side outlet, spun copper ball back water valve.

Type	Dimensions in inches					Weight, lbs.
	A	B	B'	C	Depth	
<b>SERIES 560AG</b>						
562AG	2	10	11	16	10	59
563AG	3	10	11	16	10	59
564AG	4	10	11	16	10	59
<b>SERIES 660</b>						
664	4	14	15 1/4	21	13	129
665	5	14	15 1/4	21	13	129
666	6	14	15 1/4	21	13	129

Type	Dimensions in inches		Weight, lbs.	Type	Dimensions in inches		Weight, lbs.				
	A	B			A	B					
<b>SERIES 760B</b>											
762B	2	9x12	60	<b>SERIES 5200X</b>							
763B	3	9x12	60								
764B	4	9x12	60								
765B	5	9x12	60								
766B	6	9x12	60	<b>SERIES 5320X</b>							
<b>SERIES 5300X</b>											
5302X	2	8 1/2	10 1/2					5322X	2	8 1/2	10
5303X	3	8 1/2	10 1/2					5323X	3	8 1/2	10
5304X	4	8 1/2	10 1/2	5324X	4	8 1/2	10				
<b>SERIES 1500</b>											
<b>SERIES 1600</b>											
1502	2	12x4 1/2	15	1604	4	14x6 1/2	33				
1503	3	12x4 1/2	16	1605	5	14x6 1/2	34				
1504	4	12x4 1/2	17	1606	6	14x6 1/2	35				





# JOSAM HEAVY DUTY FLOOR DRAINS WITH TRAP

## SERIES 1080

Flushing rim and baked white enamel interior, insure complete sanitation. Opening for jet is provided to permit trap to be easily flushed and cleaned. Trap is self-cleansing with no fouling spaces.

Cast iron japanned body with baked white enamel interior, polished brass top with special hinged, perforated, brass grate, recessed female threaded outlet, unless otherwise specified.

## SERIES 1080A

Identical with series 1080 but without trap.

## SERIES 710A

For floors where large drainage facilities are required, where waste water contains quantities of sediment and where there is a possibility of back water through waste lines. The rounded corners of the sediment bucket eliminate fouling and the bucket is equipped with hand grips permitting easy removal for emptying.

Heavy cast iron japanned body, hinged grate, removable bucket, threaded brass cleanout, recessed female threaded outlet, without brass back water valve, unless otherwise specified.

## SERIES 750A

For floors where a combined drain and double wall deep seal self-cleansing trap with flush cleanout is required, and where there is a possibility of back water through waste lines. Self cleansing trap has no fouling space and due to its being same size as outlet, insures full water way.

Heavy cast iron japanned body, anti-tilting grate, threaded brass cleanout plug, all brass back water valve, spigot outlet, unless otherwise ordered.

## SERIES 850A—With exposed flush cleanout.

A recently designed combined drain and trap which provides a moderately priced unit of ample dimensions, rugged construction, and with a practical and positive removable all-brass back water valve and seat.

Cast iron japanned body and grate, spigot outlet, with brass backwater valve, unless otherwise specified.

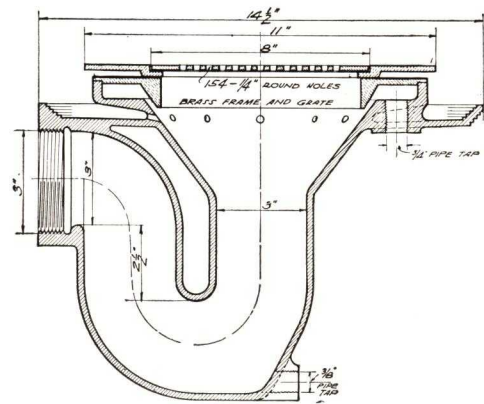
Series 860A—With internal cleanout.

Series 870A—Without cleanout.

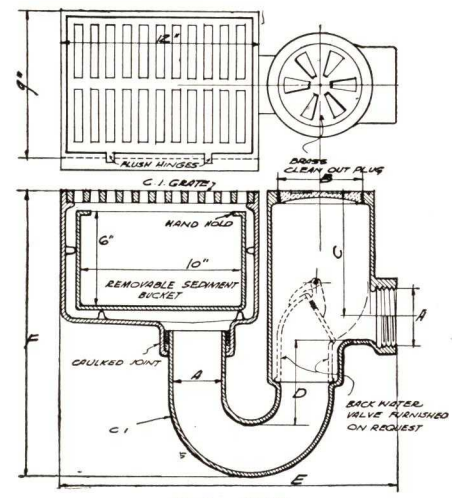
### OPTIONAL

Galvanized iron body—brass, white metal, or chrome plated top—bottom outlet furnished female threaded or spigot connection—side outlet with threaded hub or spigot connection.

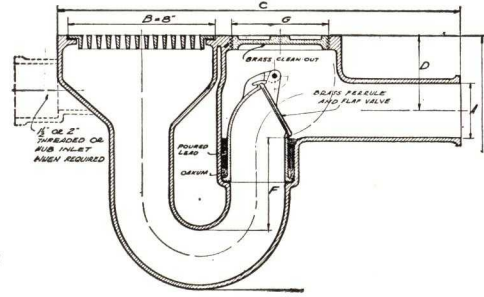
Type	Dimensions in inches						Weight, lbs.	
	A	B	C	D	E	F		
<b>SERIES 1080</b>								
1082	2	8					53	
1083	3	8					53	
<b>SERIES 710A</b>								
712A	2	4	7 1/4	4	19	14 1/2	88	
713A	3	5	7	5	20	17	97	
714A	4	6	6 3/4	5	21	18	108	
716A	6	8	6 1/2	5	28	20 1/2	128	
<b>SERIES 750A</b>								
752A	2	20 3/4	4 1/4	11	4	4	40	
753A	3	21 3/4	4	14	5	5	52	
754A	4	23 3/4	4 1/2	16	5	6	70	
<b>SERIES 850A</b>		<b>SERIES 860A</b>			<b>SERIES 870A</b>			
Type	Size, in.	Weight, lbs.	Type	Size, in.	Weight, lbs.	Type	Size, in.	Weight, lbs.
852A	2	25	862A	2	25	872A	2	25
853A	3	38	863A	3	38	873A	3	38
854A	4	52	864A	4	52	874A	4	52



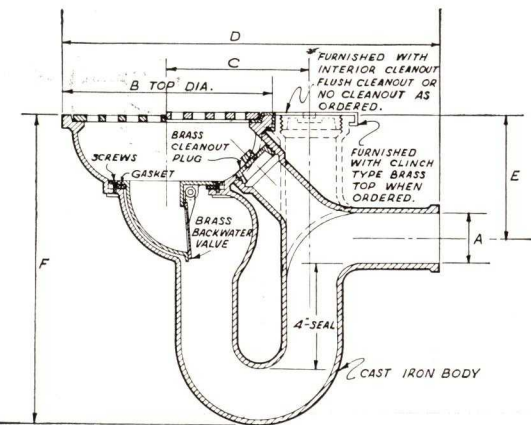
Series 1080



Series 710A



Series 750A



Series 850A

GENERAL APPLICATIONS

SERIES 1080 1080A

Floors in

Hospitals Kitchens and other Floor Areas where complete sanitation by thorough flushing is required.

SERIES 710A 750A 850A

Boiler Rooms Coal Rooms Ash Pits Basements Scale Pits Elevator Pits

in

Schools Garages Industrial Plants Warehouses Packing Plants Public Buildings Prisons Institutions Power Plants Breweries

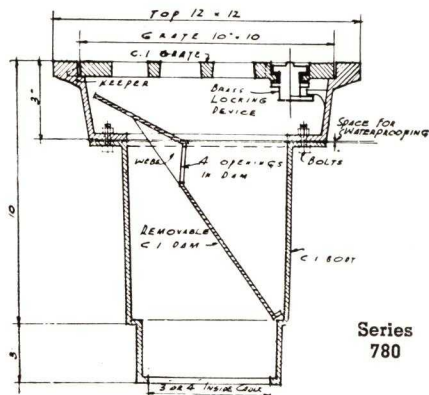
See the Following Pages for Other Types of Floor Drains



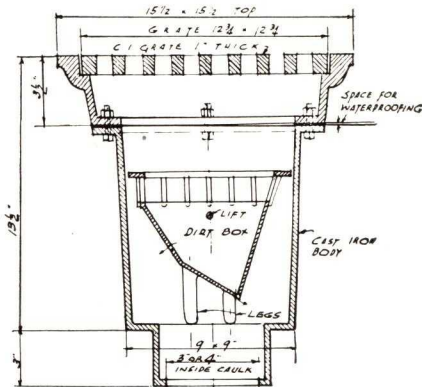
# JOSAM HEAVY DUTY FLOOR DRAINS

**GENERAL APPLICATIONS**

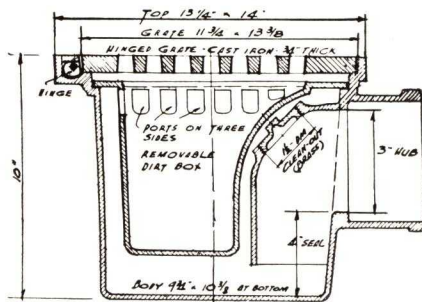
- Courts
- Loading Platforms
- Boiler Rooms
- Large Floor Areas
- in
- Packing Plants
- Industrial Plants
- Breweries
- Dairies
- Warehouses
- Garages
- Stock Barns
- Stables



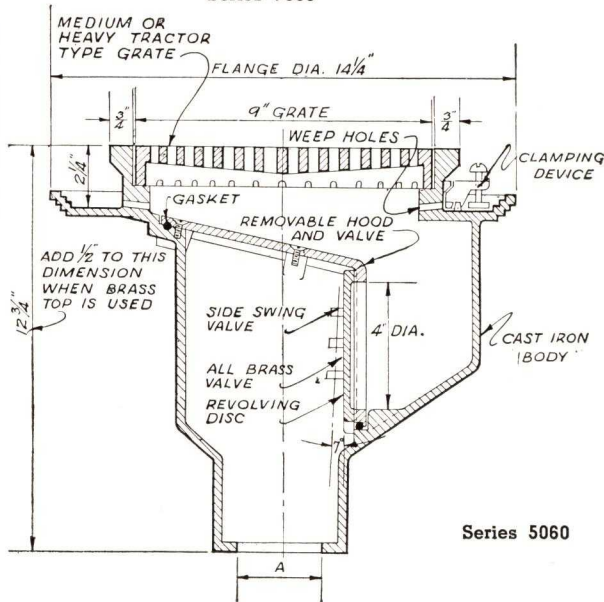
**Series 780**



**Series 790**



**Series 7000**



**Series 5060**

**SERIES 780**

For use wherever waste water contains sediment which should be prevented from entering waste lines.

The cast iron removable dam is tapered and fits tightly in the body of the drain. It is designed to deflect all incoming drainage into the drain, forcing all liquids to pass through the ports in the dam and depositing the heavy debris and sediment in its proper place in drain body.

Heavy cast iron japanned body, locking type grate, removable dam, bottom outlet for inside caulking, unless otherwise specified.

**SERIES 790**

Body is constructed to receive lead or other waterproofing membrane. Sediment container is easily removed for cleaning.

Heavy cast iron japanned body, 1-in. thick grate, removable dirt box, bottom outlet for inside caulking, unless otherwise specified.

**SERIES 7000**

Shallow rugged construction, ample waterway, and large storage capacity for sediment.

The flange of the removable sediment container fits tightly into the drain body, thereby forcing all incoming drainage into the bucket.

The threaded brass cleanout in the trap leg above the water line affords easy cleaning of trap or waste line.

Heavy cast iron japanned body, removable sediment container, threaded brass cleanout, hub outlet, unless otherwise specified.

Type	Dimensions in inches		Weight, lbs.
	A	B	
<b>SERIES 780</b>			
783	3	10x10	55
784	4	10x10	56
783A	3	14x14	95
784A	4	14x14	95
785A	5	14x14	98
786A	6	14x14	98
<b>SERIES 790</b>			
793	3	12 3/4 x 12 3/4	90
794	4	12 3/4 x 12 3/4	90
795	5	12 3/4 x 12 3/4	90
<b>SERIES 7000</b>			
7003	3	11 3/4 x 13 3/8	60
7004	4	11 3/4 x 13 3/8	60

**SERIES 5060**

A recently designed drain with combined backwater valve which provides ample drainage and positive closing against backwater. The valve housing is easily removed for cleaning the drain, and the side swing feature of the disc allows greater area of water way.

Regularly furnished cast iron japanned with tractor type grate, brass backwater valve, outlet for inside caulking unless otherwise specified.

Type	Dimensions in inches	
	Outlet	Top
5062	2	10 1/2
5063	3	10 1/2
5064	4	10 1/2

**OPTIONAL**

Galvanized iron body—brass, white metal, or chrome plated top—bottom outlet furnished female threaded inside caulk or spigot—side outlet furnished threaded, hub or spigot.

See the Preceding Pages for Other Types of Floor Drains



# JOSAM OPEN SEAT BACK WATER SEWER VALVES

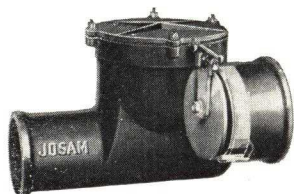
## JOSAM BACKWATER SEWER VALVES PROTECT PROPERTY, EQUIPMENT AND MERCHANDISE

Floor drains and fixtures will act as open inlets rather than outlets, allowing water and sewage to enter basements and cause damage when there is excessive rain, tidewater or inadequate sewer carry-off. When this occurs, damage to property, equipment, and merchandise results . . . foundations are

undermined, equipment is ruined, and merchandise destroyed. This can be eliminated by the installation of Josam Open Seat Backwater Sewer Valves at proper points in the main drain line and branches where floor drains and fixtures are installed in the basement.

GENERAL APPLICATIONS

Recommended for Main Sewer Lines in Buildings for Protection Against Damage From Back Water and Sewage



### SERIES 1100

(Vertical Swing Flap)  
With Iron Bolted Down  
Cleanout Cover

### SERIES 1140

(Vertical Swing Flap)  
With Brass Threaded Cleanout  
Cover

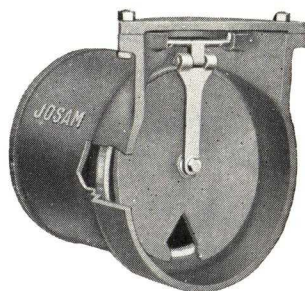


### SERIES 1170

(Side Swing Flap)  
With Iron Bolted Down  
Cleanout Cover

### SERIES 1180

(Side Swing Flap)  
With Brass Threaded Cleanout  
Cover



### SERIES 1100 1/2

The flap mechanism is identical in design, construction and operation of Series 1100.

When placed at the discharge end of sewer lines, the Josam Flap Valve is an absolute safeguard against back flow of sewage.

Also recommended for use between settling basins in sewage disposal plants. Same sizes as Series 1100.

## GENERAL DESCRIPTION

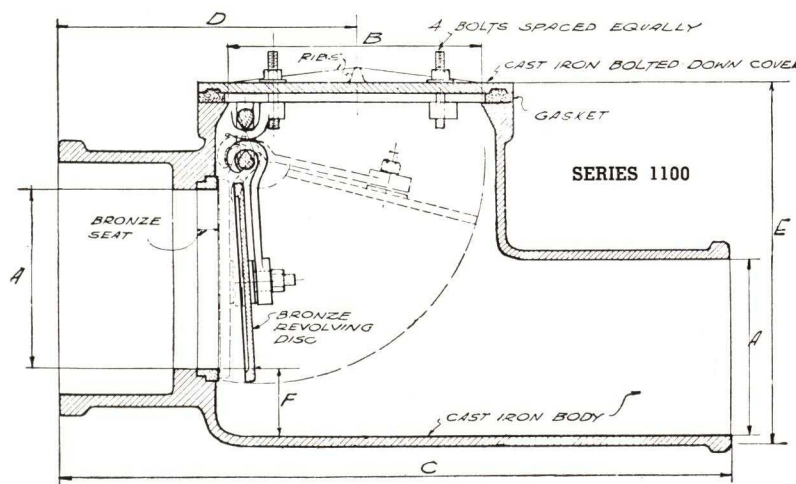
Josam Backwater Sewer Valves are available with either vertical or side-swing brass flaps. The valve bodies for Josam Backwater Sewer Valves are the same for both the vertical and side-swing flaps. The valve body directly beyond the flap or disc is offset 1 1/2 in. to 3 1/2 in. below the valve seat depending on size of valve, which precludes the possibility of fouling the valve.

## GENERAL CONSTRUCTION

Cast-iron japanned body, hub inlet and spigot outlet, bolted down cleanout cover 2 in. larger than outlet for easy accessibility, unless otherwise specified. Can be provided with hub connection for use with tile sewer pipe, when so specified. Also furnished with machined faced and drilled flanged ends. To bring cleanout flush with floor level, extensions of variable heights are furnished at additional cost.

Type		Dimensions in inches						Weight, lbs.
		A	B	C	D	E	F	
		<b>SERIES 1100 AND 1170</b>						
Series 1100	Series 1170							
1102	1172	2	4 3/4	13 1/2	6 1/8	5 3/8	1 3/8	18
1103	1173	3	5 5/8	14 3/4	6 1/2	7	1 3/8	26
1104	1174	4	6 3/8	15 1/4	6 7/8	8 1/8	1 1/2	32
1105	1175	5	8 3/8	18 3/4	8	11	1 1/2	50
1106	1176	6	8 3/8	20 1/2	8 3/4	11 1/4	1 1/2	60
1108	1178	8	10 3/4	22 1/4	9 3/4	13 1/2	1 1/2	115
1110	.....	10	13	24	11 3/4	16 1/2	2	190
1112	.....	12	15	25 3/4	12 1/4	18	2	250
1115	.....	15	18 3/8	32 1/2	14 5/8	24	3	540
1118	.....	18	22 1/2	36 3/4	17 1/2	35 3/8	3 1/8	780
1124	.....	24	30 1/4	45	20 1/4	35 3/4	3 1/4	1650
1130	.....	30	36 1/4	51	24 3/4	42 1/4	3 1/2	2400
		<b>SERIES 1140 AND 1180</b>						
1140	1180							
1142	1182	2	4	13 1/2	6 1/8	4 7/8	1 3/8	18
1143	1183	3	5	14 3/4	6 1/2	6 1/8	1 3/8	26
1144	1184	4	6	15 1/4	6 7/8	8 3/4	1 1/2	32
1145	1185	5	8	18 3/4	8	11 1/2	1 1/2	50
1146	1186	6	8	20 1/2	8 3/4	11 3/4	1 1/2	60
1148	1188	8	10	22 1/4	9 3/4	11 1/4	1 1/2	115

Series 1100 1/2 made in sizes from 2 in. to 30 in.



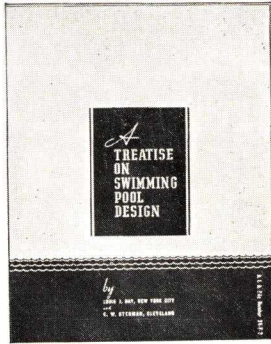
See Pages 11 and 12 for Josam Drains Equipped with Backwater Valves



GENERAL APPLICATIONS

- Swimming and Wading Pools
- in Schools, Colleges, Clubs, Hotels, Institutions, Residences, Parks

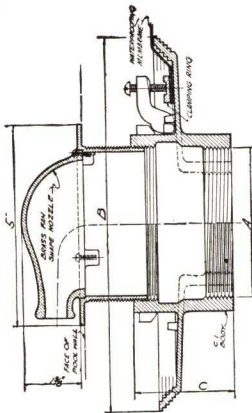
## JOSAM SWIMMING POOL EQUIPMENT



**ANOTHER JOSAM SERVICE . . .** a recently published 48 page book on construction, sanitation and operation of swimming pools. This publication contains clear and authoritative basic information and technical data including layouts and plans of all types of swimming and wading pools, construction details, pool water supply, water purification, transmission of infection, operation, salt water pools, pools for special purposes, ornamental and garden pools.

A copy of this Treatise, which sells for \$1.00, will be sent to you gratis, by writing direct to us and mentioning "SWEET'S".

### JOSAM SWIMMING POOL CONNECTION WITH BRASS FAN SHAPED INLET



#### Series 320CF

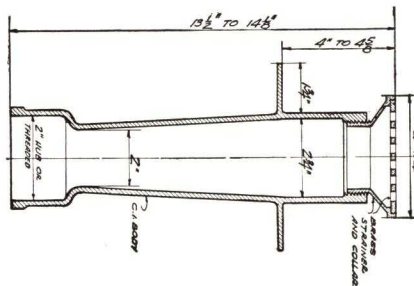
For use in swimming pool walls as inlet or circulating connection. When used as an inlet it deflects the water down the wall of pool. Can be set at any lateral angle. Clamping device assures a watertight connection. Cast iron body with brass, adjustable fan shaped inlet.

Type	Dimensions in inches		
	A	B	C
321 1/4 CF	1 1/2	9 1/4	3
322 CF	2	9 1/4	3
323 CF	3	9 1/4	3 1/4
324 CF	4	10 1/4	3 1/4

### JOSAM SWIMMING POOL INLET, OUTLET OR OVERFLOW CONNECTION FOR WATER SUPPLY OR CIRCULATING LINES

#### Series 2240H

Body is sufficiently long to extend through wall of pool, and the flat flange acts as an anchor in the construction or can be used to attach waterproofing membrane. Cast iron body with brass, square, adjustable strainer which provides means for meeting variations in thickness of pool wall construction.



Type	Dimensions in inches	
	Outlet	Strainer
2242H	2	4x4
2263H	3	6x6

See the following pages for other Swimming Pool Fittings

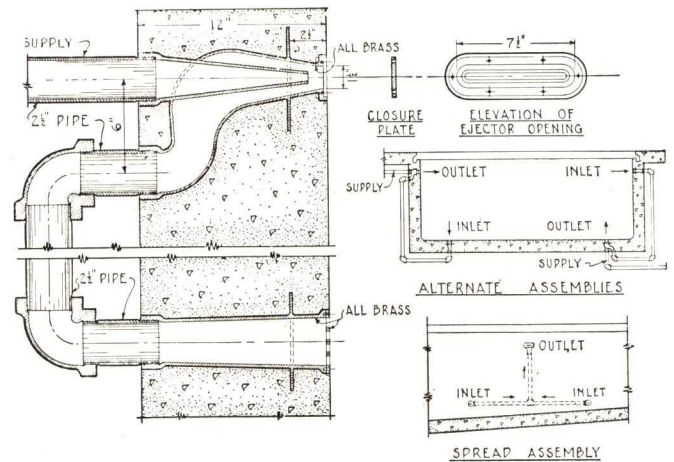
### JOSAM CIRCULATING EJECTOR OUTLETS AND INLETS

#### Series 1800

A recently developed novel type of inlet which works on the principle of an injector so that the entering stream of fresh water causes a secondary circulation of water already in the pool through the auxiliary inlets and piping.

This secondary circulation keeps all water in constant motion to a distance of 10 to 20 ft. out from the wall or floor in which the inlets are placed, thus doing away with "dead spots" between or below the inlets, and also effecting a thorough commingling of the incoming water with that already in the pool.

All brass one piece construction, 2 1/2 in. female threaded connection from pump and adjacent inlet piping, chrome plated outlet face place 1 1/2 in. x 7 1/2 in. opening. Chrome plated closure plate furnished when specified, to inject water into pool without syphonage.

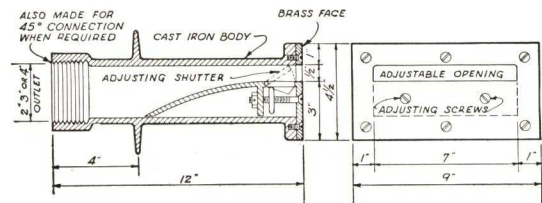


### JOSAM ADJUSTABLE NOZZLE

#### Series 2020

Adjustable type of nozzle permits water volume delivered at each inlet to be accurately determined and locked so that the desired volume of water will be permanently delivered.

All brass construction, 2 1/2 in. female threaded connection, chrome plated face plate.



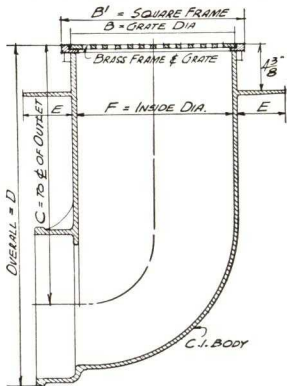
Type	Dimensions in Inches	
	Outlet	Face
2022	2	4 1/2 x 9
2023	3	4 1/2 x 9
2024	4	4 1/2 x 9



# JOSAM SWIMMING POOL EQUIPMENT (Continued)

## JOSAM SWIMMING POOL MAIN OUTLET DRAIN

### Series 590M



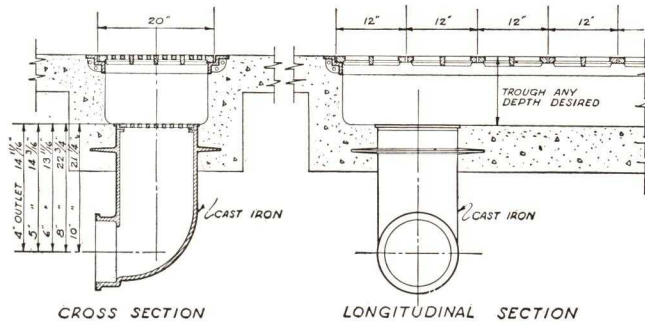
For use where construction requires a side outlet drain with an exceptionally large drainage area to allow for quick drainage of pool. Heavy cast iron body, brass square frame and brass round grate.

Type	Dimensions in inches						
	Outlet	B	B'	C	D	E	F
594M	4	11	12x12	14 <sup>11</sup> / <sub>16</sub>	18	2 <sup>1</sup> / <sub>2</sub>	10
595M	5	11	12x12	14 <sup>13</sup> / <sub>16</sub>	18	2 <sup>1</sup> / <sub>2</sub>	10
596M	6	11	12x12	13 <sup>11</sup> / <sub>16</sub>	18	2 <sup>1</sup> / <sub>2</sub>	10
598M	8	14	15 <sup>1</sup> / <sub>4</sub> x15 <sup>1</sup> / <sub>4</sub>	22 <sup>3</sup> / <sub>4</sub>	28 <sup>1</sup> / <sub>2</sub>	4	13 <sup>1</sup> / <sub>8</sub>
599M	10	14	15 <sup>1</sup> / <sub>4</sub> x15 <sup>1</sup> / <sub>4</sub>	21 <sup>3</sup> / <sub>4</sub>	28 <sup>1</sup> / <sub>2</sub>	4	13 <sup>1</sup> / <sub>8</sub>

## JOSAM MAIN OUTLET DRAIN—TROUGH TYPE

For wide pools where two or more outlets should be used, Series 590M can be set in a trough of any depth desired, with grates set in 12 in. or 20 in. direction and frame constructed accordingly. Outlets can be set on sides to keep elevation of main drain pipe as high as possible.

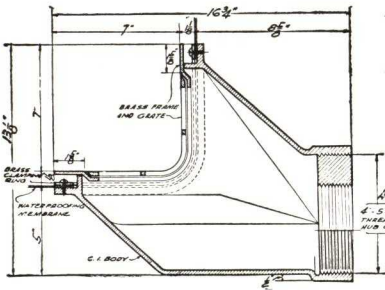
All brass 12 in. x 20 in. grates, in chrome plated, polished brass or nickel plate. (Brass frame for trough not furnished by Josam.)



## JOSAM REVERSIBLE ANGLE SWIMMING POOL MAIN OUTLET DRAIN

### Series 1200

For use where large capacity outlet drain in floor angle of pool is desired. Can be set horizontal or vertical to conform to pool construction and piping layout. Clamping ring holds waterproofing membrane to drain body, making watertight connection. Heavy cast iron body, brass frame and removable grate, brass clamping device.



Type	A., in.
1204	4
1205	5
1206	6

### Series 1230

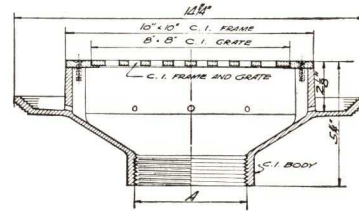
—Same construction except a lighter weight drain and smaller drainage area, made in sizes 2 in., 3 in. and 4 in. only.

## JOSAM DOUBLE DRAINAGE SWIMMING POOL MAIN OUTLET DRAIN

### Series 580SB

Large drainage area permits rapid emptying of pool water. Cast iron body, brass square frame and brass square grate.

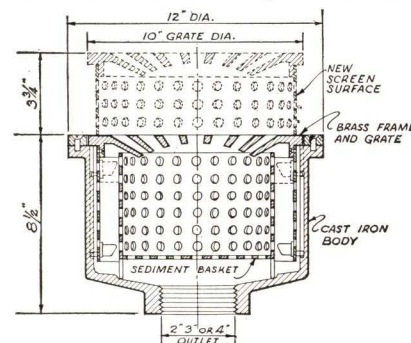
Type	Dimensions in in.	
	Outlet	Grate
582SB	2	8x8
583SB	3	8x8
584SB	4	8x8



## JOSAM PROMENADE DRAIN WITH SEDIMENT BASKET

### Series 1900

Recommended to prevent solid matter entering waste lines and accumulating on screens, hair catchers and filters. When sediment basket is completely filled and surrounding area is flooded, surface can be drained by lifting the top of drain and a secondary screen surface comes into play and takes care of the surrounding water and debris, after which, the basket can be removed for cleaning and the drain top placed in its normal position.



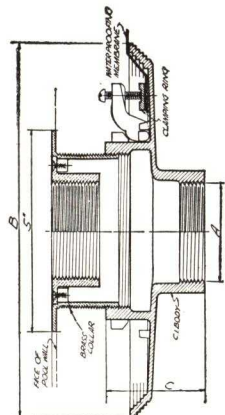
Cast iron body with chrome plated brass top, 2 in., 3 in. or 4 in. outlet for threaded or caulk connection.

Type	Dimensions in inches	
	Outlet	Top Dia.
1902	2	12
1903	4	12
1904	3	12

## JOSAM SWIMMING POOL ATTACHMENT FOR VACUUM CONNECTION

### Series 310CV

Installed horizontally in pool wall for vacuum cleaner connections. Cast iron body with brass vacuum connection adjustable to meet variation in pool wall thickness. Clamping device assures a watertight connection.



Type	Dimensions in inches		
	A	B	C
311 <sup>1</sup> / <sub>2</sub> CV	1 <sup>1</sup> / <sub>2</sub>	9 <sup>1</sup> / <sub>4</sub>	3
312CV	2	9 <sup>1</sup> / <sub>4</sub>	3
313CV	3	9 <sup>1</sup> / <sub>4</sub>	3 <sup>1</sup> / <sub>4</sub>
314CV	4	10 <sup>1</sup> / <sub>4</sub>	3 <sup>1</sup> / <sub>4</sub>

GENERAL APPLICATIONS

- Swimming and Wading Pools
- Schools
- Colleges
- Clubs
- Hotels
- Institutions
- Residences
- Parks

See the following pages for other Swimming Pool Fittings



# JOSAM SWIMMING POOL EQUIPMENT (Continued)

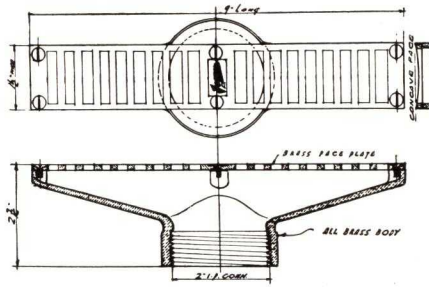
GENERAL APPLICATIONS

Swimming and Wading Pools

in

Schools  
Colleges  
Clubs  
Hotels  
Institutions  
Residences  
Parks

## ALL BRASS SCUM GUTTER DRAINS



Series 2290E

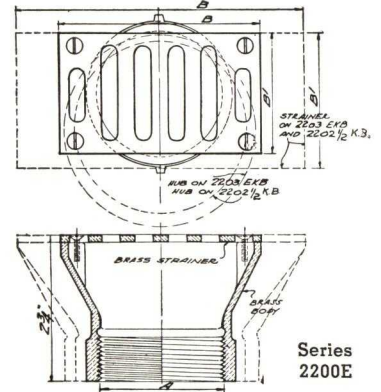
Type	Dimensions in inches	
	Outlet	Strainer
2291 1/2 E	1 1/2	9 x 1 1/2
2292 E	2	9 x 1 1/2

### Series 2290E

For use in swimming pool scum gutters or wherever a drain with ample drainage area is required. Slots in strainer parallel direction of flow into scum gutter. Inner contour of body affords quick drainage. All brass body with concave strainer. Also furnished with flat strainer.

### Series 2200E

For scum gutters or similar places where a narrow but efficient drain is required. Rectangular shaped strainer insures adequate water way. Slots in strainer face parallel direction of flow into scum gutter. Cast brass body and flat strainer. Also furnished with concave face plate.

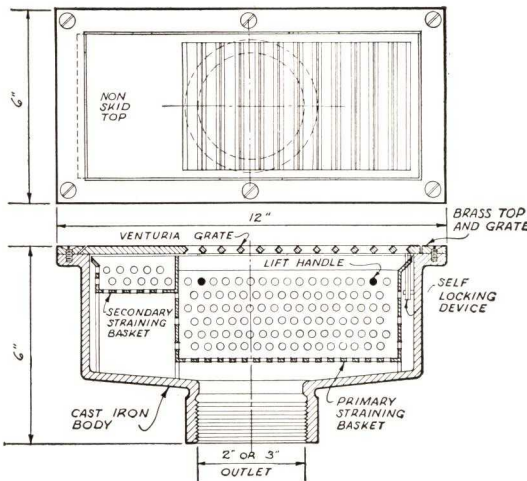


Series 2200E

Type	Dimensions in inches		
	A	B	B'
2201 1/2 E	1 1/2	3 3/4	2 1/4
2202 E	2	3 3/4	2 1/4
2202 1/2 E	2 1/2	5 3/8	2 1/2
2203 E	3	5 3/8	2 1/2

## JOSAM SCUM GUTTER DRAIN WITH PRIMARY AND SECONDARY BASKETS

Series 1350



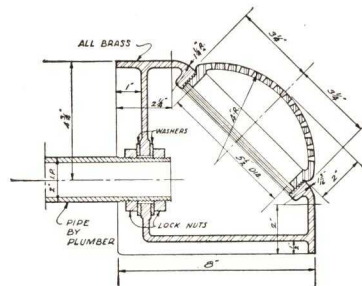
Recommended in gutters where floating debris is to be intercepted and prevented from entering and clogging waste lines. When primary basket is completely filled, the waste water remains on top of drain at which time top may be removed and remaining water and debris drained into secondary straining basket. When water has completely drained, baskets can be removed for cleaning.

All brass construction with 2, 2 1/2 or 3 in. threaded or caulking connection.

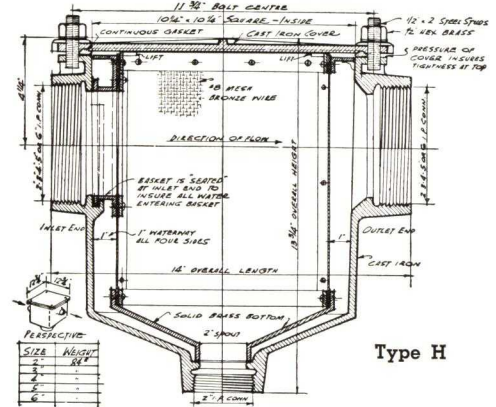
Type	Dimensions in inches	
	Outlet	Top
1352	2	12 x 6
1352 1/2	2 1/2	12 x 6
1353	3	12 x 6

## JOSAM SHOWER DOMES Series 2100

A recently developed unit which aerates water and tends to reduce its temperature by evaporative cooling in swimming and diving pools. Also for use



## JOSAM HAIR AND SEDIMENT INTERCEPTOR FOR CIRCULATING LINES WITH BLOW-OUT CONNECTION



Type H

Particularly adaptable as hair catcher in swimming pools, and for use on pressure line to pumps, filters, water softeners and bleaching tanks, for the interception of hair, lint, sand, gravel and other solids and small particles which should be prevented from entering lines to any equipment.

Basket is easily removed for cleaning. Solid cast brass hopper shape bottom of the screen basket is threaded for 2 in. I. P. blow-out valve for use in temporary cleaning of interceptor without shutting down line.

Heavy cast iron grey enamel body, removable gasket tight cover, bronze wire screen basket. Designed for 150 lb. pressure. Made 2, 3, 4, 5 and 6 in. connections. Type HH made in 8 and 10 in. connections.

in and around children's wading pools, as a shower bath and for amusement. The spray of water is thrown upward through the dome, eliminating the possibility of stinging or irritation to bathers, and the design of the water apertures is such that the individual streams break up into fine mist if any considerable water pressure is used.

All brass construction with removable dome; side outlet for 2 in. pipe with double locknuts. Also furnished with 2 in. bottom tapped outlet.

See the preceding pages for other Swimming Pool Fittings



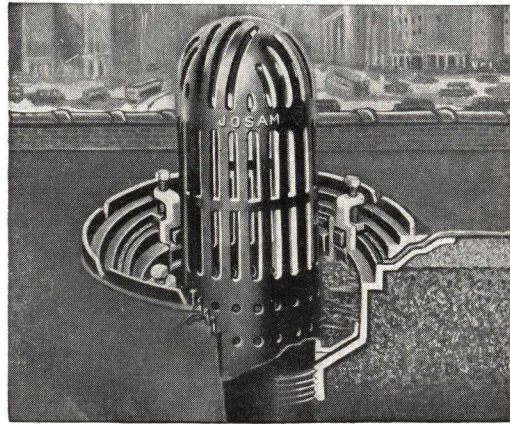
# JOSAM ROOF DRAINS

## Josam Roof Drain Features

The removable dome strainer and sediment cup applied to roof drains, was originated by us and is an exclusive Josam feature.

The sediment cup or retainer is located below the roof level, thereby providing for the accumulation of sediment and other debris in the retaining space and permitting and providing for the outlet of water at a much greater flow than any other design, all of which, have outlet area only above the level of the roof.

The sediment cup or retainer catches and holds sediment and other debris, thereby preventing



it from entering the drainage line, and can be cleaned easily by lifting it out to remove accumulated sediment and debris.

The dome strainer and sediment cup has an outlet area considerably greater than the outlet area of the pipe line to which it is connected.

Removing the sediment cup and strainer does not interfere with the clamping ring and the water-tight connection with the roofing. The clamping devices used on Josam roof drains are Josam designs and provide a positive unperforated water-tight leak-proof connection.

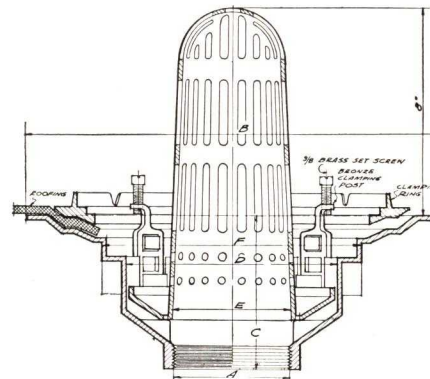
GENERAL APPLICATIONS

- Flat Roof of
- Concrete
- Cement
- Cement Tile
- Hollow Tile
- Gypsum
- Pre-Cast Slab
- Wood
- Composition

## SERIES 410S

The large body diameter and height of the removable combined dome strainer and sediment cup, assures ample drainage area both above and below the roof line. The improved type gravel stop clamping ring holds the roofing felts to the drain body by means of four heavy bronze adjustable clamping posts. These posts have two major vertical adjustments to allow for varying thickness of roofing material.

Heavy cast iron japanned body, combined dome strainer and sediment cup, female threaded outlet, unless otherwise specified.

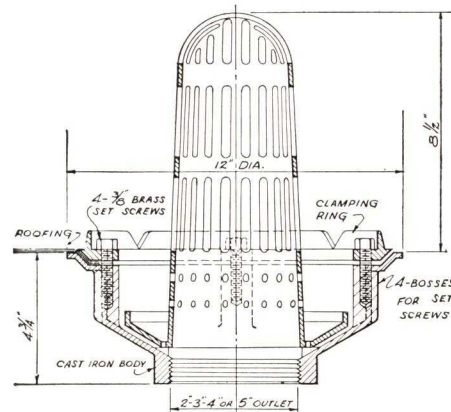


Series 410S

## SERIES 460GS

A recently developed roof drain moderately priced, having the removable combined dome strainer and sediment cup feature and a clamping ring to securely hold the roofing felts to the drain body.

Heavy cast iron japanned body and dome strainer, female threaded outlet, unless otherwise specified.

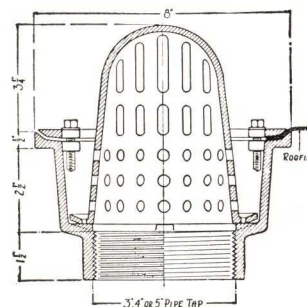


Series 460GS

## SERIES 450G

For use in formed and lined valleys or gutters not less than 8 in. in width. The metal or other lining of the valley or gutter, or the roofing material is held firmly in place, without perforation, by the clamping ring which is fastened by three brass bolts, making a water-tight connection between roofing material and drain. Dome strainer and sediment cup provides ample drainage area. When used for draining built up areas, a gravel stop clamping ring is provided.

Cast iron japanned body, removable dome strainer, female threaded outlet, unless otherwise specified.



Series 450G

Type	Dimensions in inches						Weight, lbs.
	A	B	C	D	E	F	

### SERIES 410S

412S	2	16	6	8 $\frac{3}{8}$	5	10 $\frac{1}{4}$	38
413S	3	16	6	8 $\frac{3}{8}$	5	10 $\frac{1}{4}$	38
414S	4	16	6	8 $\frac{3}{8}$	5	10 $\frac{1}{4}$	38
415S	5	17 $\frac{1}{4}$	6	9 $\frac{3}{8}$	5 $\frac{1}{2}$	11 $\frac{3}{8}$	48
416S	6	18 $\frac{1}{4}$	6	10 $\frac{3}{8}$	6 $\frac{1}{2}$	12 $\frac{1}{4}$	56
418S	8	20 $\frac{1}{8}$	7	12 $\frac{1}{4}$	8 $\frac{1}{2}$	14 $\frac{1}{2}$	70

### SERIES 450G

Type	Outlet	Top	Weight
452G	2"	8"	13 lbs.
453G	3"	8"	13 lbs.
454G	4"	8"	13 lbs.
455G	5"	8"	14 lbs.

### SERIES 460GS

Type	Outlet	Top	Weight
462GS	2"	12"	.....
463GS	3"	12"	.....
464GS	4"	12"	.....
465GS	5"	12"	.....

## OPTIONAL

Galvanized; all brass; brass dome; square top flange; female threaded, inside caulk or spigot bottom outlet; threaded hub or spigot side outlet.

See the Following Pages for Other Types of Roof Drains



# JOSAM ROOF DRAINS

## GENERAL APPLICATIONS

**SERIES 450S**  
**460GSP**

Promenade Deck

**SERIES 410SEJ**

Flat Roof of Concrete Cement Cement Tile Hollow Tile Gypsum Pre-cast Slab Wood Composition

**SERIES 2010S**

Cornices Window Sills Balconies

See the following pages for other types of Roof Drains

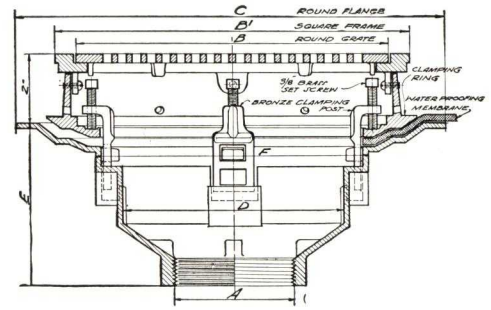
### SERIES 420SP

The bottom portion of the collar supporting the frame and grate holds the waterproofing membrane to the drain body by means of four heavy bronze adjustable clamping posts which have two major vertical adjustments. This forms a water-tight connection between the membrane and the drain body, eliminating the use of a metal flashing of any kind.

Heavy cast iron japanned body, square frame and anti-tilting round grate, 2-in. high collar, female threaded outlet unless otherwise specified.

Type	Dimensions in inches							Wt., lbs.
	A	B	B'	C	D	E	F	
422SP	2	11 $\frac{3}{4}$	13 $\frac{1}{4}$	16	8 $\frac{3}{8}$	6	10 $\frac{1}{4}$	43
423SP	3	11 $\frac{3}{4}$	13 $\frac{1}{4}$	16	8 $\frac{3}{8}$	6	10 $\frac{1}{4}$	43
424SP	4	11 $\frac{3}{4}$	13 $\frac{1}{4}$	16	8 $\frac{3}{8}$	6	10 $\frac{1}{4}$	43
425SP	5	12 $\frac{3}{4}$	14 $\frac{1}{4}$	17 $\frac{1}{4}$	9 $\frac{3}{8}$	6	11 $\frac{3}{8}$	56
426SP	6	13 $\frac{3}{4}$	15 $\frac{1}{4}$	18 $\frac{1}{4}$	10 $\frac{3}{8}$	6	12 $\frac{3}{8}$	63
428SP	8	13 $\frac{3}{4}$	15 $\frac{1}{4}$	20 $\frac{3}{8}$	12 $\frac{1}{4}$	7	14 $\frac{1}{2}$	67

440BSP Series—Same detail as 420SP but body of drain has double drainage flange.



Series 420SP

### SERIES 460GSP

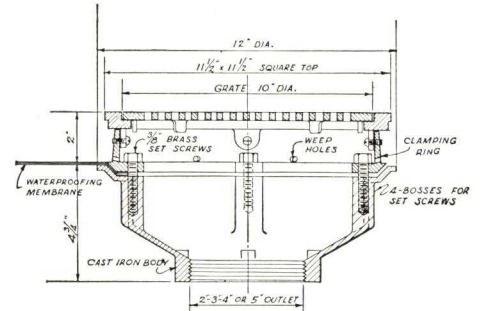
A recently developed roof drain for promenade roofs, where a moderately priced drain is required and where ample drainage area is provided in addition to the positive clamping feature assuring a water-tight connection between roofing felts and drain body.

Cast iron japanned body and grate, female threaded outlet unless otherwise specified.

#### OPTIONAL

Galvanized; all brass; brass top; female threaded, inside caulk or spigot bottom outlet; female threaded, hub or spigot side outlet.

SERIES 460GSP			
Type	Outlet, in.	Top, in.	Weight, lbs.
462GSP	2	12x12	.....
463GSP	3	12x12	.....
464GSP	4	12x12	.....
465GSP	5	12x12	.....



Series 460GSP

## JOSAM ROOF DRAIN WITH INTEGRAL EXPANSION JOINT

### SERIES 410SEJ

All movable parts are accessible from inside the roof drain from roof level, by simply removing the dome.

This is a feature which is entirely new and does not exist on any other make of expansion joint or roof drain.

It eliminates the necessity of providing access panels for adjustment of the expansion joint.

It prevents expansion joint from being buried in wall or other inaccessible places.

It is more convenient to adjust at roof level than to provide ladder to ceiling above the floor.

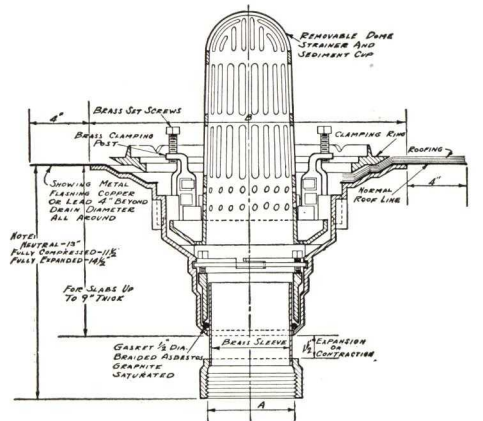
Electric wires, piping, etc., often make it very inconvenient to get to expansion joint below ceiling at roof.

The vertical space for installation of a combined unit is less than for roof drain and separate expansion joint.

It provides ready means of access for adjustment or renewal of movable parts.

The design of drain body, clamping ring and dome is identical to Josam Series 410S roof drain.

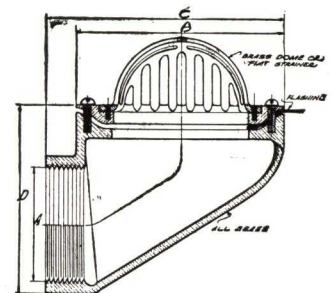
Regularly furnished cast iron drain body, dome and clamping ring with brass clamping posts. Integral expansion joint with brass sleeve, cast iron gland ring and locking ring, brass compression screws, asbestos gasket, female threaded outlet. Spigot outlet when so specified.



Series 410SEJ

### JOSAM ALL-BRASS CORNICE, BALCONY OR SILL DRAIN

For draining overhanging cornices, small balconies and similar areas in order to prevent drip to lower portions of building structure. Collar acts as clamping ring holding flashing securely in place. All brass, shallow type body, 45° or 90° off vertical. Also furnished with flat or bee-hive strainer.



Series 2010S





# JOSAM ROOF DRAINS

## JOSAM ALL BRASS ANGLE CORNICE DRAIN

### SERIES AA-BB-CC

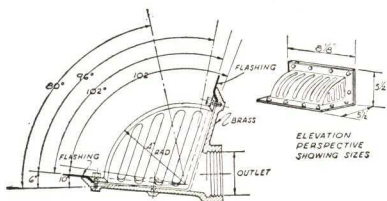
For use where drain is located at joining of roof and parapet wall.

Large waterway due to all exterior surfaces of the barrel being slotted.

The flange of the barrel acts as the clamping member for attaching roof flashing.

Made in several angles to meet various types of parapet wall construction.

Heavy rough brass body and removable barrel strainer, female threaded outlet on a true horizontal.



Series AA-BB-CC

### SERIES AA-BB-CC

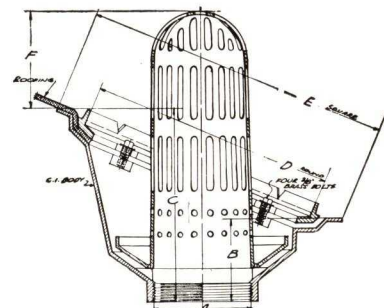
Type	Outlet, ins.	Weight, lbs.
102° opening off a 6° above horizontal		
AA2	2	13
AA3	3	13
AA4	4	13
96° opening off a 6° above horizontal		
BB2	2	13
BB3	3	13
BB4	4	13
80° opening off a true horizontal		
CC2	2	13
CC3	3	13
CC4	4	13

## JOSAM SAW TOOTH ROOF DRAIN

### SERIES 490C

Types are available for ordinary roof pitches but drains can be furnished for any pitch specified. The outlet is so placed that no offset around the steel construction is required, to waste line. The combined dome strainer and sediment cup is easily removable and assures ample drainage area, eliminating the possibility of clogging the drain.

Heavy cast iron japanned body, combined dome strainer and sediment cup, female threaded outlet, unless otherwise specified.



Series 490C

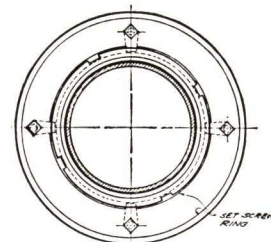
## JOSAM VENT STACK SLEEVE

### SERIES 610A

For use in flat roofs where a watertight connection between vent stack and roof is desired. The clamping ring securely holds the roofing felts in place. Space between vent pipe and sleeve should be filled with roofers elastic cement or oakum and poured lead joint, thereby making a watertight joint between sleeve and pipe.

Also for use in supporting base of flag pole.

Cast iron japanned body, clamping ring and pressure ring with brass set screws, unless otherwise specified.



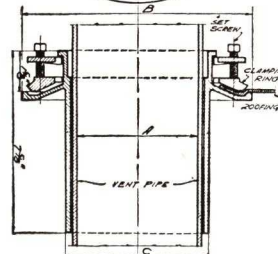
Series 610A

## JOSAM EXPANSION JOINT

### SERIES 6000

For use with any Josam Drain, in any line where there is expansion and contraction. The heavy gauge brass sleeve has a smooth non-corrosive surface working freely against a graphite saturated, round, braided asbestos packing ring. The ring is held in place by means of a gland ring which is tightened by three wing nuts, thereby assuring a watertight and airtight joint.

Heavy cast iron japanned body and ring, brass sleeve, male threaded top and female threaded bottom, unless specified with hub top and spigot bottom.



Expansion Joint 6000

Type	Dimensions in inches						Weight, lbs.
	A	B	C	D	E (square)	F	
<b>SERIES 490GC</b>							
492GC	2	3	.....	11 3/8	14 1/4	4 1/2	38
493GC	3	3	.....	11 3/8	14 1/4	4 1/2	38
494GC	4	3	.....	11 3/8	14 1/4	4 1/2	38
495GC	5	3 7/8	.....	13	15 7/8	4	48
496GC	6	3 7/8	.....	13	15 7/8	4	52
<b>SERIES 610A</b>							
611 1/2 A	1 1/2	6	2 3/4	.....	.....	.....	8
612 A	2	6 3/4	3 1/4	.....	.....	.....	9
612 1/2 A	2 1/2	7	3 3/4	.....	.....	.....	10
613 A	3	7 1/2	4 1/4	.....	.....	.....	11
614 A	4	8 3/4	5 1/4	.....	.....	.....	15
615 A	5	9 3/4	6 1/4	.....	.....	.....	20
616 A	6	10 3/4	7 1/4	.....	.....	.....	22
618 A	8	13	9 1/2	.....	.....	.....	24
<b>SERIES 6000</b>							
6002	2	3 1/8	3 5/8	.....	.....	.....	7
6003	3	4 1/8	4 5/8	.....	.....	.....	12
6004	4	5 1/8	5 5/8	.....	.....	.....	15
6005	5	6 1/8	6 5/8	.....	.....	.....	18
6006	6	7 1/8	7 5/8	.....	.....	.....	20
6008	8	9 1/2	9 5/8	.....	.....	.....	32

GENERAL APPLICATIONS

### SERIES AA-BB-CC

Metal Deck Flat Roof Construction at Parapet Wall

### SERIES 4900C

Saw Tooth Roof of Various Roof Pitches

### SERIES 610A

Vent Stacks on flat roofs

### SERIES 6000

Expansion Joint for Josam Roof Drains and other Pipe Lines to allow for Expansion and Contraction

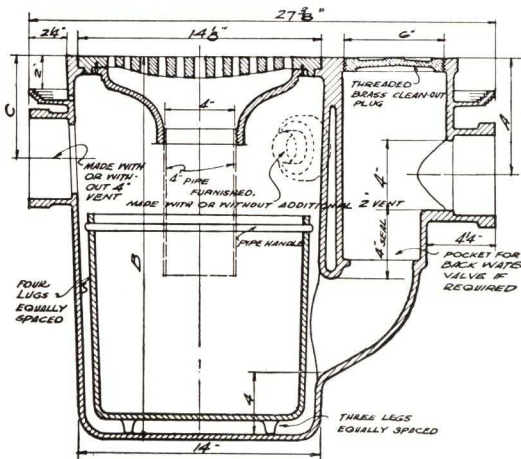
See preceding pages for other types of Roof Drains



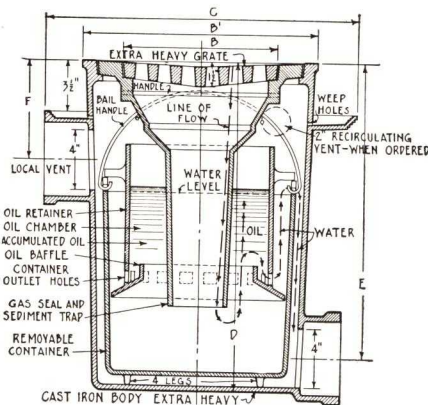
# JOSAM DOUBLE DRAINAGE GARAGE AND HEAVY DUTY INDUSTRIAL DRAINS

**GENERAL APPLICATIONS**

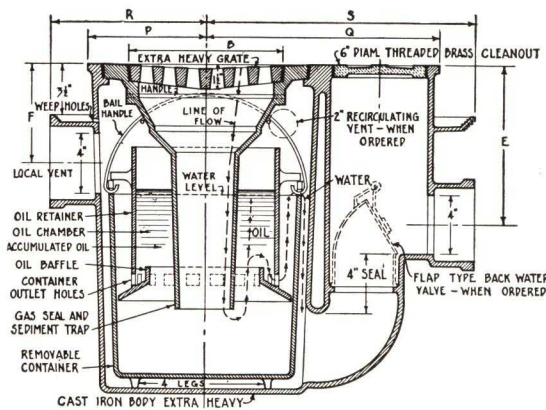
- Wash Racks
- Driveways
- Boiler Rooms
- Ash Pits
- Large Floor Areas
- Ramps
  
- in
- Garages
- Industrial Plants
- Oil Refineries
- Packing Plants
- Warehouses
- Machine Shops
- Cleaning and Dyeing plants
- Filling and Bulk Stations
- Fleet Truck Garages
- Public Buildings



Series 900G

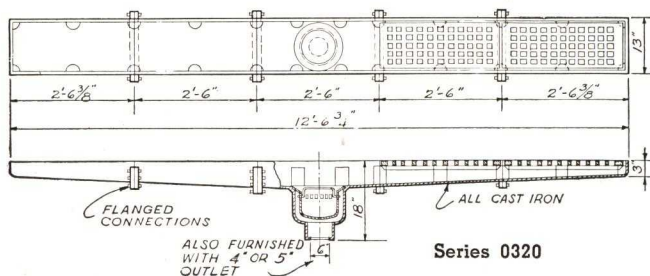


Series 6100



Series 6200

COMPLETE UNIT MADE UP OF 2'-6" SECTIONS



Series 0320

## SERIES 900G

For floors of various thicknesses where there is a large volume of waste water containing heavy deposits of foreign matter which should be prevented from entering waste lines. Gas seal cone is recommended where waste water carries gasoline, oil and other volatile matter which tend to gasify in drain or sewer. Heavy cast iron body and grate, sediment retainer, gas seal cone and threaded brass cleanout. Also furnished with backwater valve.

Type	Dimensions in inches						Weight, lbs.
	Max. slab depth	Outlet and vent	Grate	A	B	C	
910G	6	4	14	10 3/4	22	6 3/4	255
920G	8	4	14	12 3/4	24	8 3/4	280
930G	10	4	14	14 3/4	26	10 3/4	305
950G	12	4	14	18 3/4	30	14 3/4	355

## OIL INTERCEPTING DRAINS

### SERIES 6100

Intercepts and retains light and heavy oils, such as gasoline, kerosene, lubricating oils, coal tar oils, benzene, toluene, etc., together with grease, sludge and sediment, discharged into drains with waste water. Prevents clogging of drains, traps and waste pipes by oil and grease. Built for heavy service.

Double drainage type cast iron japanned with deep sediment container, oil retainer, cone type gas seal and sediment trap, extra heavy 10 1/2-in. or 14 1/2-in. grate, 4-in. hub local vent, 4-in. hub outlet. Also made with 3-in., 5-in. or 6-in. outlet.

### SERIES 6200

Same construction as Series 6100 except with deep seal trap and 6-in. threaded brass top cleanout, with 2-in., 3-in. or 4-in. hub outlet. Backwater valve optional.

Type	Dimensions in inches											Wt. lbs.
	Max. slab depth*	B	B'	C	D*	E* outlet C/L	F* vent C/L	P	Q	R	S	
<b>SERIES 6100</b>												
6110	4	10 1/2	16	21	22	19 3/4	6 3/4	...	...	...	...	266
6120	6	10 1/2	16	21	24	21 3/4	8 3/4	...	...	...	...	279
6130	8	10 1/2	16	21	26	23 3/4	10 3/4	...	...	...	...	292
6140	12	10 1/2	16	21	30	27 3/4	14 3/4	...	...	...	...	317
6150	4	14 1/2	21	27	22	19 3/4	6 3/4	...	...	...	...	356
6160	6	14 1/2	21	27	24	21 3/4	8 3/4	...	...	...	...	374
6170	8	14 1/2	21	27	26	23 3/4	10 3/4	...	...	...	...	387
6180	12	14 1/2	21	27	30	27 3/4	14 3/4	...	...	...	...	412

<b>SERIES 6200</b>												
6210	4	10 1/2	...	...	22	10 3/4	6 3/4	7 3/4	15 1/4	11	17 1/2	302
6220	6	10 1/2	...	...	24	12 3/4	8 3/4	7 3/4	15 1/4	11	17 1/2	331
6230	8	10 1/2	...	...	26	14 3/4	10 3/4	7 3/4	15 1/4	11	17 1/2	360
6240	12	10 1/2	...	...	30	18 3/4	14 3/4	7 3/4	15 1/4	11	17 1/2	418
6250	4	14 1/2	...	...	22	10 3/4	6 3/4	10 1/2	17 1/2	13 3/4	20	402
6260	6	14 1/2	...	...	24	12 3/4	8 3/4	10 1/2	17 1/2	13 3/4	20	426
6270	8	14 1/2	...	...	26	14 3/4	10 3/4	10 1/2	17 1/2	13 3/4	20	450
6280	12	14 1/2	...	...	30	18 3/4	14 3/4	10 1/2	17 1/2	13 3/4	20	498

\*Increased 1/2 in. when furnished with brass top.

## JOSAM RAMP DRAIN

Recommended for quick carry-off of large volume of surface water. Withstands heavy trucking. Removable sediment bucket retains solids and prevents clogging of waste lines. All cast iron. Furnished with two or more sections of 2 ft. 6 in. x 13 in. wide, flanged connections. Sediment bucket optional.

Type	Outlet
0324	4
0325	5
0326	6

See the following page for other oil intercepting devices



## JOSAM OIL INTERCEPTORS PROTECTION AT REASONABLE COST

The expenditure for an installation of a Josam Oil Interceptor is proportionately negligible, but will mean adequate protection against the hazards of grease, oil, gasoline, naphtha and other dangerous residue entering the drainage lines.

A carelessly dropped lighted match or cigarette . . . a dull roar of a destructive explosion and the quick flare of all-consuming fire . . . it may happen tomorrow in garages, factories, filling stations, dry cleaning establishments, refineries, and many other buildings whose owners believe they have every possible protection against every hazard—and haven't!

### Operation of Interceptor

In the interceptor, the incoming drainage is directed against a series of baffles which separate the oil, gasoline, naphtha, etc., from the drainage passing through. These intercepted liquids do not remain in the interceptor but are immediately discharged through the automatic gravity flow oil draw-off, to a container or storage tank. The draw-off, by reason of its design, can be set for each individual installation. The setting or adjusting depends upon various conditions of the particular installation, such as the size of the interceptor and the amount of drainage passing through in a given period. The container or storage tank placed somewhere in the vicinity of the interceptor receives the accumulating oils and other liquids safely, for the reason that the discharge of the accumulating oils and other liquids has been automatic.

A special feature of the Josam Oil Interceptor is the removable sediment container which retains all heavier than water solids removed from the drainage during the intercepting process. Disposal of sediment is easily accomplished by simply lifting off the interceptor cover and taking out the container.

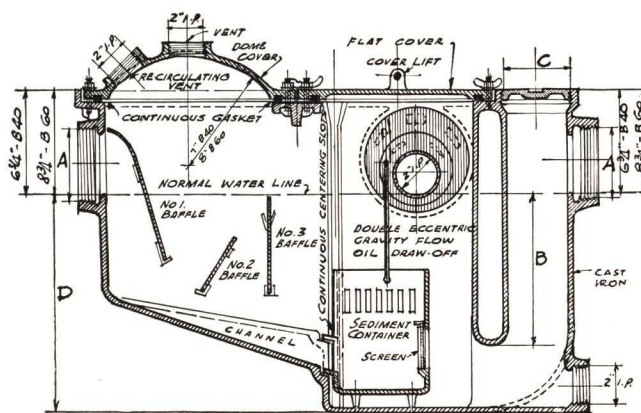
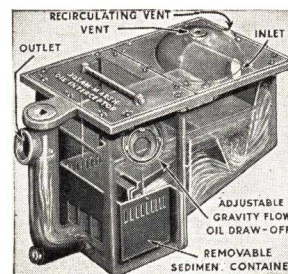
### Eliminates All Inflammable Solids and Liquids

The slanting floor of the interceptor, combined with the three baffles within, and the shape and angle of the channel function jointly to effect elimination of all inflammable solids and liquids. There is no possibility of evaporation, since the seal is of sufficient depth to absolutely prevent it. The gravity draw-off is most efficient . . . it continues to discharge all oil, gasoline, naphtha, etc., regardless of how small an amount enters the interceptor. Oil positively cannot be discharged through the interceptor outlet . . . it must be discharged through the automatic draw-off . . . even if oil, gasoline and other inflammables enter without water!

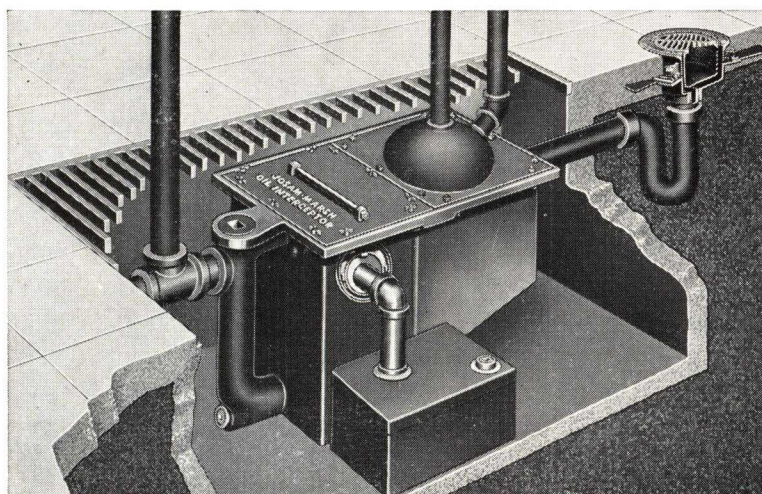
The principle of the Josam Oil Interceptor permits its location at any point or distance below the floor or at any point below the entry of the drainage passing through it. Adaptable to practically any location in the drainage system where they can most adequately protect your property. A range of sizes is available to take care of any requirement.

### General Construction

The Josam Oil Interceptor is made of heavy cast iron in various sizes to meet the needs of any type of building. Its scientific design and construction effects separation of practically all of the oil, gasoline, naphtha, etc., from drainage passing through drain pipes.



Type	Dimensions in inches							Weight, lbs.
	A Inlet and outlet	B Seal	C Cleanout	D	E Width	F Length	G Height	
B-42	2	9 1/2	4	14	18	32	21	185
B-43	3	9 1/2	4	14	18	32	21	185
B-44	4	9 1/2	4	14	18	32	21	185
B-64	4	14 1/2	6	21	24	42	30	325
B-65	5	14 1/2	6	21	24	42	30	325
B-66	6	14 1/2	6	21	24	42	30	325



Above illustration shows Oil Interceptor located in pit in basement of large garage, taking the drainage from all drains throughout the building and intercepting oil and discharging it to container adjacent and passing clear water through to sewer.

GENERAL APPLICATIONS

Wash Racks

Driveways

Boiler Rooms

Ash Pits

Large Floor

Areas

Ramps

in

Garages

Industrial Plants

Oil Refineries

Packing Plants

Warehouses

Machine Shops

Cleaning and Dyeing Plants

Filling and Bulk Stations

Fleet Truck

Garages

Public Buildings

See preceding page for oil intercepting drains



# JOSAM GREASE INTERCEPTORS

A Type and Size For Every Requirement

GENERAL APPLICATIONS

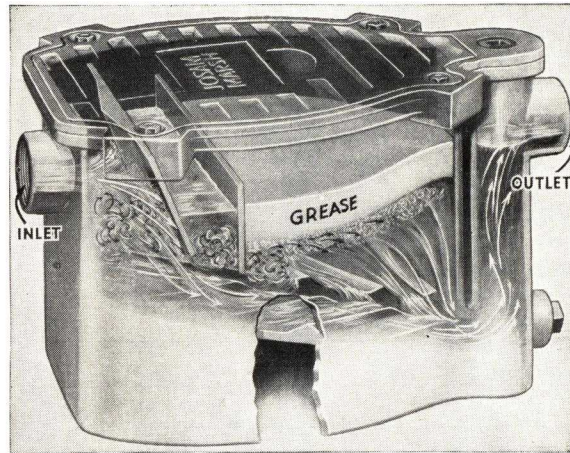
- 
- Kitchen Sinks
- Diet Sinks
- Electric Dishwashers
- Combination Dish and Pot Sinks
- Stock Kettles
- in
- Residences
- Restaurants
- Apartments
- Hospitals
- Clubs
- Schools
- Hotels
- Institutions
- Packing Plants
- Abattoirs

See the Following Pages for Other Types of Interceptors

Intercepts 90% or More Grease from Waste Water

Evacuates Solids

Prevents Foul Odors



Not Water Cooled

Easily Cleaned

Portable

**JOSAM GREASE INTERCEPTORS INTERCEPT AND RETAIN GREASE, OIL AND FAT, PREVENTING THEM FROM ENTERING WASTE PIPES**

Drainage facilities of industrial plants, hotels, apartments, restaurants, homes and other locations often become suddenly inactive until the source of trouble can be located. Often, such stoppage in drain pipes is difficult to find . . . expensive labor may be wasted seeking the location of the trouble . . . resulting in torn-up floors, escape of obnoxious sewer gas into homes or places of business, shut-down machinery . . . a costly waste of time and money.

The remedy is simple! An installation of a Josam Grease Interceptor which intercepts and retains grease, fats and oils from waste water, will protect drainage systems from present and future hazards brought about by the coagulation of these substances in drain pipes.

Josam Grease Interceptors are not water-cooled . . . solids are automatically evacuated . . . fermentation and decomposition are entirely eliminated, thereby leaving clean, odorless grease in the interceptor.

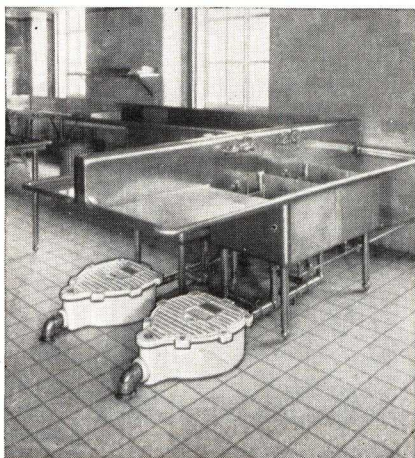
**JOSAM GREASE INTERCEPTORS PROVIDE A POSITIVE MEANS FOR REMOVING GREASE, FAT AND OIL FROM ALL TYPES OF DRAINAGE SYSTEMS**

Tests by plumbing inspectors and health officials in many cities show separation and retention of over 90% of all grease, oils and fats passing through a Josam Grease Interceptor, regardless of water temperature.

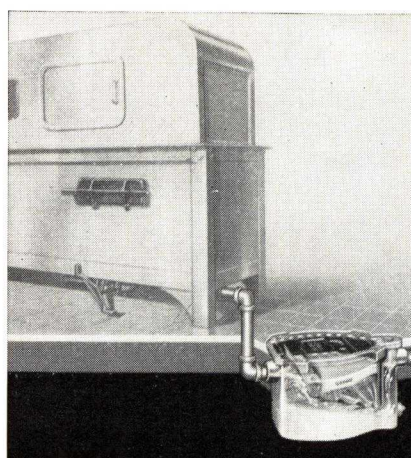
As there is no need of a cold water connection for chilling purposes, installation cost is very reasonable. A Josam Grease Interceptor can be applied at that point in the pipe line where it is needed . . . inlet and outlet are simply joined to pipe lines already existing . . . above, below, or on a level with the floor.

The Josam Grease Interceptor is sanitary because it automatically evacuates all solids and sediment, thereby preventing the occurrence of foul odors. By simply raising the cover, which is gasket tight as a safeguard against leakage, the grease chamber is entirely exposed for easy cleaning.

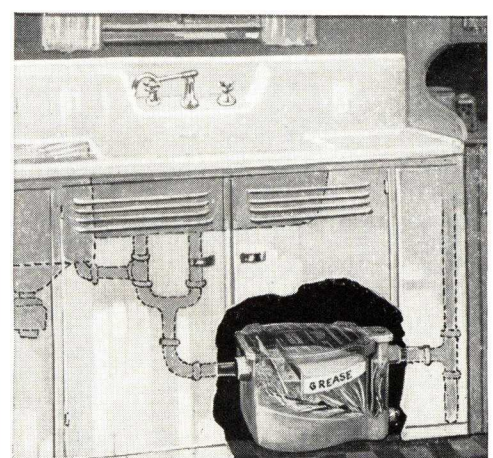
Positive in action . . . positive in results obtained . . . the Josam Interceptor, by every test, is the only interceptor whose patented scientific construction obtains results with the efficiency necessary to merit your every consideration.



Built-in-the-Floor Installation for Deep Sinks



Flush Floor Installation for Electric Dishwasher



Kitchen Sink Installation



# JOSAM GREASE INTERCEPTORS

**Design:** The shape, baffles, design of bottom and sides, gasketed cover and depth of seal . . . all these are essential to the efficient performance of a grease interceptor. In order to have the grease interceptor operate properly, the water contents for clarifying and the definite ratings must be maintained.

The full depth apron adds not only to the appearance of the interceptor, but affords greater ease in installation. Easier roughing-in dimensions are maintained, and the tiling around the interceptor (when it has been placed below the floor level) is accomplished with less effort and the result is a more workman-like installation. See table below for various sizes made with continuous apron.

**Venting:** The Josam Grease Interceptor, in order to retain its water seal and prevent syphonage, must be vented in the same way and with the same size vent as required by ordinance or otherwise, for the venting of traps in any locality.

**General Construction:** Heavy cast iron body, painted white enamel interior and exterior, painted white enamel gasket tight cover and baffles, threaded brass cleanout, inlet and outlet as shown in table, unless otherwise ordered.

## Recommended Sizes:

**Type A-0**—For small kitchen sinks in residences and kitchenette apartments.

**Type A-1**—For kitchen sinks in residences, restaurants, apartments, diet sink in hospitals.

**Type A-1B**—For moderate size residence sinks, restaurants, hotels, electric dishwashers, diet sinks, small combination dish and pot sinks.

**Type A-2**—For large residence sinks, restaurants, hotels, electric dishwashers, small combination dish and pot sinks.

**Type A-3**—For restaurants, electric dishwashers and large pot sinks.

**Type A-5 and Type A-15**—For large dishwashers, restaurants, batteries of two to four slop or pot sinks, combination of dishwashers, pot sinks and stock kettles, when outlet runs to central point.

**Type A-25 and Type A-50**—For entire kitchen in hotels, hospitals, and large restaurants where one large interceptor is to be used at a centralized point.

**Type A-75 and Type A-150**—For specialized industries where exceptionally large capacities are required.

GENERAL APPLICATIONS

Kitchen Sinks

Diet Sinks

Electric Dishwashers

Combination Dish and Pot Sinks

Stock Kettles

in

Residences

Restaurants

Apartments

Hospitals

Clubs

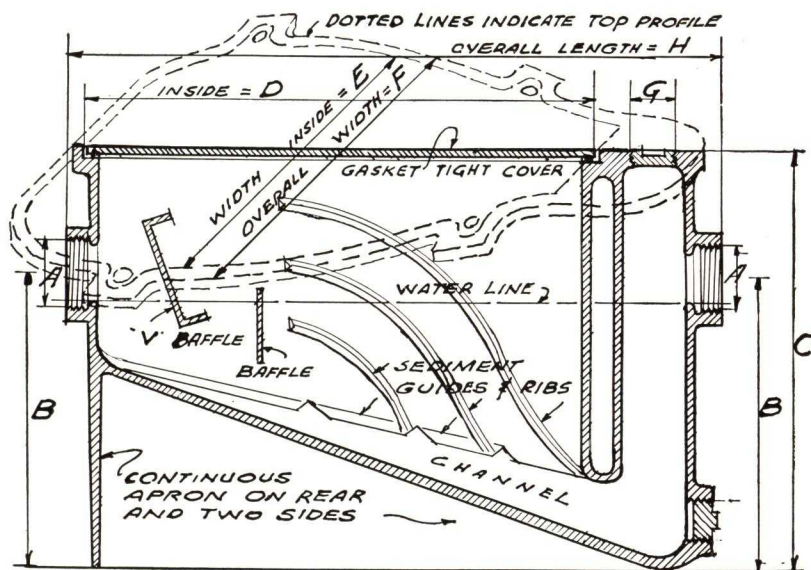
Schools

Hotels

Institutions

Packing Plants

Abattoirs



Size		Flow gallons per hour	Dimensions in inches								Weight, lbs.	Pipe Connection
Visible double wall seal	Internal seal		A	B	C	D	E	F	G	H		
<b>WITH APRON SUPPORT</b>												
A-0		250	1½-2	7¾	10½	13¼	9¾	11¼	1	16¼	52	Tap
A-1	A-1½	700	2	9¾	12¼	16½	11¾	13½	1¼	19¾	72	Tap
A-1B		900	2	12½	16¾	18½	13½	15½	1½	24½	135	Tap
A-2	A-2½	1,200	2-3	12¼	19	22	16	18¼	1½	27	185	Tap
A-3	A-3½	1,500	3-4	18½	23½	27¼	19¼	21¾	2	32½	360	Tap
A-5	A-5½	2,500	4-5	20½	27¾	29¾	22¾	25¼	2	38¼	539	Tap
<b>WITH LEG SUPPORT</b>												
	A-15½	3,500	4-5	24½	33½	37	27½	29½	2	46½	710	Tap
	A-25½	4,000	6	23	32¾	42¼	30¼	32¾	2½	57¼	825	Caulk
	A-50½	9,000	7	30½	40	45¾	39¾	41¾	3	55¾	1,650	Caulk
	A-75½	15,000	7	36	48	69½	52	54	3	84½	3,500	Sewer pipe
	A-150½	30,000	8	42½	54½	102½	71	73	10	110¾	6,500	Flanged

See the Following Pages for Other Types of Interceptors



## JOSAM INTERCEPTORS

GENERAL APPLICATIONS

- Plaster Sinks
- Dental and Surgical Sinks
- Operating Room Sinks
- Lavatories
- in
- Hospitals
- Beauty Parlors
- Barber Shops
- Laboratories
- Dental Offices
- Residences
- Hotels

### For Hospital Plaster Sinks TYPE C-1

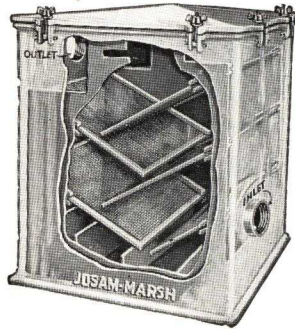
For the removal from waste water of all Plaster of Paris, either solid or in a state of suspension, cotton, lint, hair or any other foreign matter which waste water may contain.

The water enters through the inlet pipe, is baffled and carried over the vertical plates and then passes through the fine mesh screens where the process of filtration takes place.

The Interceptor is absolutely non-siphoning and easily accessible for cleaning, as the cage and screens can be readily taken out by simply removing gasket tight cover.

#### General Construction

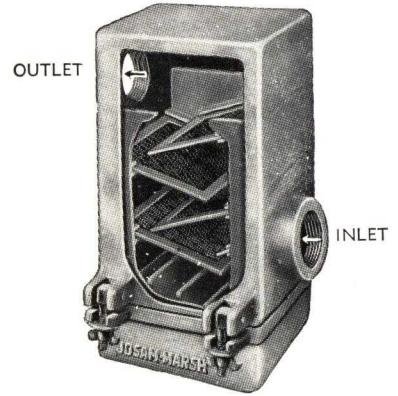
Heavy grey cast iron body with white porcelain enamel exterior, chromium plated clamps, cage is heavy galvanized material, brass screens, female threaded inlet and outlet. Seal 7 1/2 in.



Type	Dimensions in inches				Weight, lbs.
	Inlet	Outlet	Top	Height	
C-1	2	2	14x14	16	240

### For Dental and Surgical Sinks TYPE C-2

For use in connection with Dental, Surgical and Operating Room Sinks, Barber Shops and Beauty Parlor Sinks, for the removal from waste water of all solids, plaster, metals, cotton, lint, hair, etc. Cage is easily removed for cleaning. Interceptor is absolutely non-siphoning.



#### General Construction

Polished aluminum body, aluminum cage, brass screens, female threaded inlet and outlet. Seal 3 1/2 in.

Type	Dimensions in inches				Weight, lbs.
	Inlet	Outlet	Top	Height	
C-2	1 1/2	1 1/2	5x5	10 1/2	8

## JOSAM SEDIMENT AND HAIR INTERCEPTORS

For use in connection with lavatories in barber shops, beauty parlors, residences, hotels, hospitals, and wherever waste waters contain hair and foreign matter which should be prevented from entering

waste lines. Removable plug on bottom permits ready access to brass filter screen. Absolutely non-siphoning.

### With Visible Double Wall Seal TYPE D-4



### With Visible Double Wall Seal and Swing Outlet TYPE D-5



*Types D-4 and D-5 permitted in all localities.*

#### General Construction

**Type D-4 and D-3**—Cast brass nickel plated body, brass removable screen and cleanout plug, 2 in. seal, female threaded outlet, inlet tapped for 1 1/4 in. O.D. brass tubing. Inlet also furnished for 1 1/2 in. tubing, when so specified.

**Type D-5**—Identical except 7 in. seal and 1 1/2 in. top swing joint outlet connection with ground joint fitting, permitting direct connection to waste line without bends or fittings.



### With Internal Wall Seal TYPE D-3

*Type D-3 permitted in certain localities.*

Type	Dimensions in inches				Weight, lbs.
	Inlet	Outlet	Top dia.	Height	
D-4	1 1/4	1 1/2	3 3/4	6 1/2	6
D-4A	1 1/2	1 1/2	3 3/4	6 1/2	6
D-5	1 1/4	1 1/2	3 3/4	10	7 1/2
D-5A	1 1/2	1 1/2	3 3/4	10	7 1/2
D-3	1 1/4	1 1/2	3 3/4	6 1/2	6
D-3A	1 1/2	1 1/2	3 3/4	6 1/2	6

See the Preceding pages for other types of Interceptors



GENERAL APPLICATIONS

# JOSAM CAS-CADE GREASE INTERCEPTOR

Intercepts Grease — Evacuates Solids

An Efficient Grease Interceptor—Not Water-Cooled

## JOSAM SERIES J-10

The Josam Cas-cade Grease Interceptor meets the need for a Grease Interceptor for sinks in kitchens of dwellings, apartments and any other sinks where waste water contains grease and fat which should be prevented from entering waste lines. The Josam Cas-cade recovers practically all of the grease from waste waters and maintains a continuous evacuation of solids.

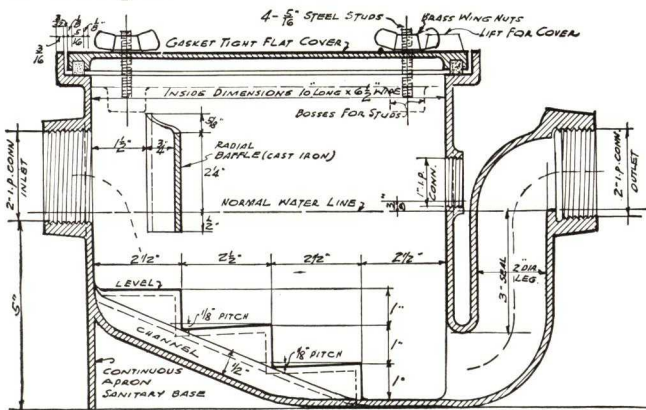
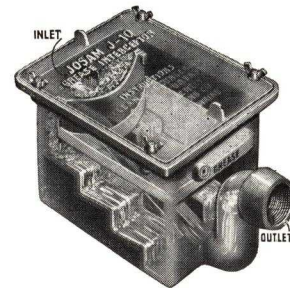
The principle of operation differs from the generally accepted designs in that the Josam Cas-cade Grease Interceptor has an entirely distinct method for the separation of grease from waste waters. All solids are evacuated with each discharge of greasy water through the interceptor, thus preventing fermentation, decomposition and foul odors in the interceptor.

By simply removing the gasket-tight cover which is held firmly in place by four brass wing nuts on steel studs, the entire chamber is accessible for the removal of the grease.

The Josam Cas-cade Grease Interceptor has a full depth integrally cast apron support thereby eliminating fouling space at floor beneath interceptor. The white enamel interior and exterior adds to the appearance and harmonizes with practically all kitchen equipment.

### General Construction

Heavy cast iron body, white enamel exterior and interior, gasket-tight cover and chromium plated wing nuts on steel studs, female threaded inlet and outlet.



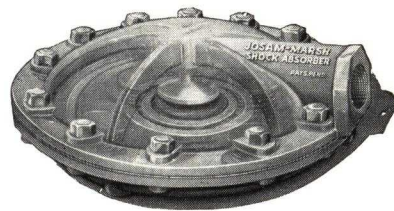
Type	Size, in.	Flow gallons per hour	Length, in.	Width, in.	Height, in.	Weight, lb.
J-10A	1 1/2	300	15	12	10	40
J-10B	2	300	15	12	10	40

Also furnished in larger sizes to suit requirements.

# JOSAM SHOCK ABSORBER

Subdues Water Hammer—Relieves Strain—Prevents Breaks—Not an Air Chamber

Josam Shock Absorbers quiet water hammer and absorb thrust and vibration in water supply lines. It will accomplish permanently, without recharging with air, rewashing, adjusting or servicing, all that several air chambers of any type will do, in addition to fulfilling its own duty of Pipe Insurance.



water pressure at 125 lbs. Furnished for higher pressures when so specified.

### Recommended Uses

For quieting water hammer in pipe lines, relieving strain and preventing damage to piping systems by absorbing and dispelling shocks arising from quick closing valves—faucets—closet flush valves—house pumps and appliances—also for water pumping systems—sewage ejectors—closets in battery—water heaters—drinking fountains—self-closing hydrants—laundries—auto wash—overland oil lines—liquid pipe lines of any kind—automatic dish washers—swimming pool circulating pumps and concrete mixing machines.

### Description

The component parts of the Josam Shock Absorber indicate the completion of extensive research and practical tests which have revolutionized obsolete methods of trying to quiet water hammer and insure permanency of plumbing water supply systems. Regularly tested to stand

Type	Size	Diameter
M-1/2	1/2	7 1/2
M-3/4	3/4	7 1/2
M-1	1	9
M-1 1/2	1 1/2	11 1/2
M-2	2	14 1/2

### SHOCK ABSORBER

Quieting Water Hammer in Pipe Lines

Preventing Drainage to Piping Systems

See pages 22 and 23 for other types of Grease Interceptors



# JOSAM ADJUSTABLE CLOSET OUTLET CONNECTIONS

Water-tight—Gas-tight—Adjustable—Permanent—Sanitary—Eliminate Plastic Joints

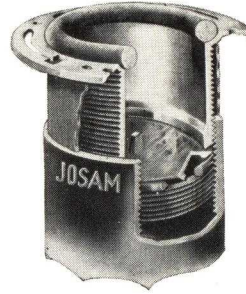
GENERAL APPLICATIONS

Water Closets  
Pedestal Urinals  
in

Schools  
Hospitals  
Public Buildings  
Institutions  
Prison Cells  
Hotels  
Clubs  
Residences  
Apartments

Josam Adjustable Closet Outlet Connections provide all necessary facilities for properly installing water closets and insuring a permanent, water-tight and gas-tight seal by means of approved asbestos gaskets, eliminating the use of plastic materials.

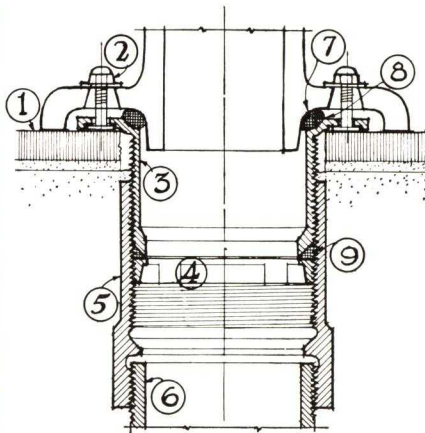
The detail below illustrates Josam Adjustable Closet Outlet Connection installed in floor construction and tightly sealed with fixture outlet by 1/2-in. as-



bestos gasket. The brass floor flange has been readjusted to the exact point permitting fixture to rest firmly upon floor when gasket is fully compressed, without strains on piping. Test plate has been removed and locking ring readjusted in position to fully compress the 1/4-in. asbestos gasket and tightly seal the adjustable threaded joint. Can be sealed at any adjusted position.

## FITS ALL MAKES OF WATER CLOSET BOWLS AND PEDESTAL URINALS WITH STANDARD FLOOR OUTLET

- 1 Floor construction bonded with connection
- 2 5/8-in. extra heavy brass bolts
- 3 Extra heavy brass floor flange. Adjustable, threaded. Permanent. Compensates for variations and irregularities in construction
- 4 Brass adjustable locking ring supports gasket and securely locks floor flange in any adjusted position. Readily adjusted by finger grips
- 5 Extra heavy cast iron japanned body same weight as extra heavy soil pipe

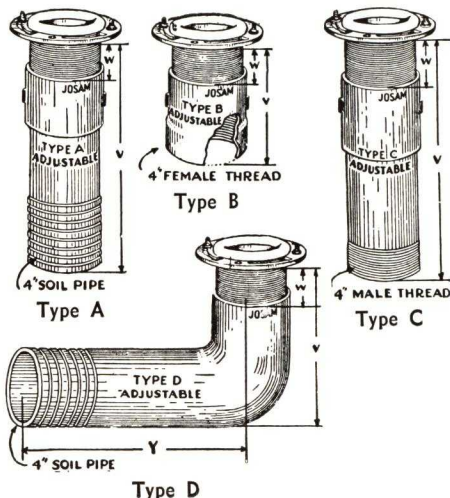


- 6 Waste pipe (not furnished)
  - 7 1/2-in. braided asbestos graphite gasket remains flexible and lasts indefinitely. Gas-tight and water-tight seal always maintained
  - 8 Gasket fully supported by wide and deep seat
  - 9 1/4-in. braided asbestos graphite gasket remains flexible and lasts indefinitely. Beveled seat expands gasket, tightly sealing adjustable threaded joint in any adjusted position. Seal withstands water test beforehand
- Fixture may be readily removed and re-installed

## ARCHITECTS AND ENGINEERS SUGGESTED SPECIFICATION

All Water Closets (and Pedestal Urinals) as shown on plans, shall be connected to and tightly sealed with waste piping by means of Josam Adjustable Closet Outlet Connections, complete as regularly furnished by manufacturer. Floor flanges and locking rings must be properly adjusted in position to provide water-tight and gas-tight seals both at fixture outlets and at adjustable threaded

joints, by means of asbestos graphite gaskets, furnished by manufacturer. Sealing of such joints with putty or other plastic materials of any kind, will not be permitted. Fixtures must rest firmly upon floors without strain upon piping when gasket is fully compressed. Connections shall not be dismantled, or any parts thereof removed until fixtures are being installed.



Type	Dimensions in inches		Type	Dimensions in inches		
	W Ad-justment	V		W Ad-justment	V	Y
A-12*	2	12 14	C- 6 1/2	3	6 1/2 9 1/2	
A-18*	2	18 20	C- 8	3	8 11	
A-24*	2	24 26	C-10*	3	10 13	
A-30*	2	30 32	C-12*	3	12 15	
A- 6	1 1/2	6 7	C-14*	3	14 17	
A- 6 1/2	1 1/2	6 1/2 8	C-16*	3	16 19	
A- 7	2	7 9	C-18*	3	18 21	
B- 6	2	6 8	C-20*	3	20 23	
B- 5	1 1/2	5 6	C-22*	3	22 25	
B- 5 1/2	1 1/2	5 1/2 7	D-12x7 1/2*	1 1/2	7 1/2 9	12
			D-18x7 1/2*	1 1/2	7 1/2 9	18
			D-24x7 1/2*	1 1/2	7 1/2 9	24
C- 4 1/2	1	4 1/2 5 1/2	D-12x7*	1	7 8	12
C- 5	1 1/2	5 6 1/2	D-18x7*	1	7 8	18
C- 5 1/2	2	5 1/2 7 1/2	D-24x7*	1	7 8	24

\*Indicates types furnished with side inlets or vents in 45° or 90° pattern, when so specified.

Inlets for Type D furnished on R.H., L.H., or R, and L. sides. Specify type, size, location and number of inlets.

## General Construction

- Cast iron japanned body
- Genuine asbestos gaskets
- Metal top shield
- Adjustable brass floor flange
- 5/8 in. extra heavy brass bolts
- Metal thread shield
- Adjustable brass locking ring
- Cast iron test plate
- Special or longer bodies, and side inlets or vents furnished when so specified.





## ADJUSTABLE WALL CLOSET SUPPORTS AND DRAINAGE FITTINGS

- Practical and Flexible
- Eliminates Buried Piping, Pipe Tunnels, Dropped Ceilings
- Rigid Construction Assures Permanent Installation

Provides vertical—front and back—and leveling adjustability.

All battery piping is installed above sub-floor, thereby dispensing with buried piping, horizontal pipe tunnels, or dropped ceilings below the battery of closets or urinals.

Piping system is simple and flexible. Separate drainage fittings for mains and branches, provide full latitude in locating piping.

Balanced unit eliminates movement of piping, support or fixture and prevents breaking of joints or fixtures.



Fixture is solidly supported on adjustable yoke, independent of wall construction, and the adjustment permits leveling and accurate spacing of fixture.

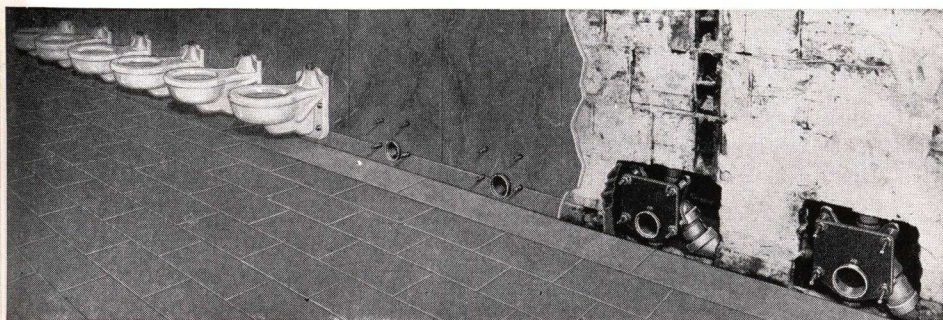
Eccentric sleeves and nipples provide leveling of fixture, proper centering of outlet and perfect alignment which eliminates any possibility of bind on pottery.

Josam Wall Closet Supports and Drainage Fittings are designed to accommodate any make of wall closet or wall urinal. They eliminate complications in building construction and simplify planning and installation of piping.

**ARCHITECTS' SPECIFICATION:** Furnish and install Josam Adjustable Wall Closet Supports and Drainage Fittings, complete with graphite gaskets and accessories, for wall-hung closets and urinals, to suit wall thickness and battery arrangement as shown on plans. The sealing of water closet trap outlets to soil pipe, with putty or other plastic compounds, will not be permitted.

GENERAL  
APPLICATIONS

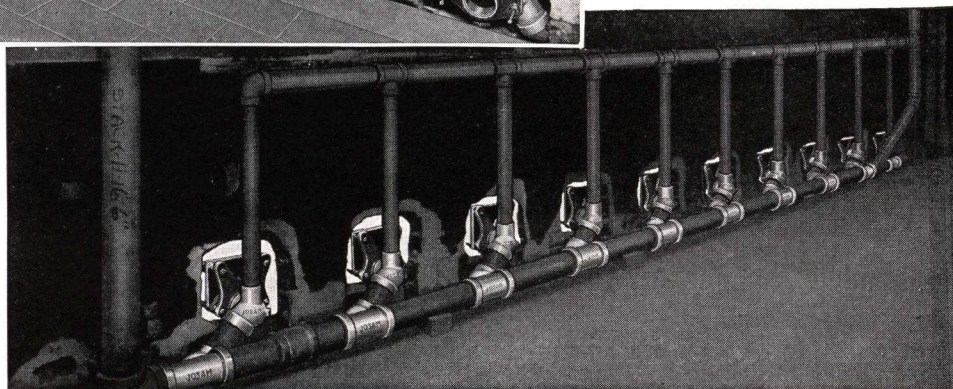
●  
Wal-hung  
Syphon Jet  
or  
Blow-out  
Type  
Bowls  
and  
Wall Type  
Urinals



Battery of Toilets showing fixtures in position.



Rear View of Above Battery, Indicating Simplicity of Piping Arrangement.



*Check* YOUR PLUMBING DRAINAGE REQUIREMENTS ON EACH JOB AGAINST THIS LIST OF JOSAM PRODUCTS, ESPECIALLY DEvised TO PROVIDE PROTECTION TO BUILDINGS, PROPERTY, EQUIPMENT, AND PEOPLE, AND SPECIFY JOSAM PRODUCTS.

<input type="checkbox"/>	Josam Floor Drains	<input type="checkbox"/>	Josam Plaster and Metal Interceptors
<input type="checkbox"/>	Josam Roof Drains	<input type="checkbox"/>	Josam Sediment and Hair Interceptors
<input type="checkbox"/>	Josam Shower Drains	<input type="checkbox"/>	Josam Shock Absorbers for Pipe Lines
<input type="checkbox"/>	Josam Urinal Drains	<input type="checkbox"/>	Josam Open Seat Swing Check Valves
<input type="checkbox"/>	Josam Sediment Basket Drains	<input type="checkbox"/>	Josam Open Seat Backwater Sewer Valves
<input type="checkbox"/>	Josam Oil Retaining Drains	<input type="checkbox"/>	Josam Adjustable Closet Outlet Connections and Bends, Water and Gas-Tight
<input type="checkbox"/>	Josam Swimming Pool Drains	<input type="checkbox"/>	Josam Cleanouts
<input type="checkbox"/>	Josam Acid Resisting Drains	<input type="checkbox"/>	Josam Traps for Every Purpose
<input type="checkbox"/>	Josam Highway Viaduct Drains	<input type="checkbox"/>	Josam Drains and Other Products Complying with U. S. Government Specifications
<input type="checkbox"/>	Josam Non-Clog Triple Drainage Drains	<input type="checkbox"/>	Josam Expansion Joints
<input type="checkbox"/>	Josam Swimming Pool Equipment	<input type="checkbox"/>	Josam Vent Stack Sleeves
<input type="checkbox"/>	Josam Grease Interceptors	<input type="checkbox"/>	Josam Soil Pipe Connectors
<input type="checkbox"/>	Josam Oil Interceptors		

*Write for complete information and details on any of the above Josam Products.*

**JOSAM REPRESENTATIVES ARE LOCATED IN THESE CITIES:**

Albany, N. Y.  
 Atlanta, Ga.  
 Baltimore, Md.  
 Birmingham, Ala.  
 Boston, Mass.  
 Buffalo, N. Y.  
 Chattanooga, Tenn.  
 Chicago, Ill.  
 Cincinnati, Ohio  
 Cleveland, Ohio  
 Dallas, Tex.  
 Denver, Colo.  
 Des Moines, Iowa

Detroit, Mich.  
 El Paso, Tex.  
 Grand Rapids, Mich.  
 Hartford, Conn.  
 Houston, Tex.  
 Kansas City, Mo.  
 Little Rock, Ark.  
 Los Angeles, Cal.  
 Miami, Fla.  
 Milwaukee, Wis.  
 Minneapolis, Minn.  
 Nashville, Tenn.  
 Newark, N. J.

New Orleans, La.  
 New York City, N. Y.  
 Oklahoma City, Okla.  
 Philadelphia, Pa.  
 Pittsburgh, Pa.  
 Richmond, Va.  
 St. Louis, Mo.  
 Salt Lake City, Utah  
 San Francisco, Cal.  
 Syracuse, N. Y.  
 Seattle, Wash.  
 Washington, D. C.

San Juan, P. R.

Buenos Aires, S. A.

West Coast Manufacturers and Distributors

**JOSAM-PACIFIC COMPANY**

765 Folsom St.  
 Branch—1340 E. 6th St.

San Francisco, Calif.  
 Los Angeles, Calif.

Canadian Manufacturers and Distributors

**EMPIRE BRASS MFG. CO., LTD.**

London, Ontario

**JOSAM MANUFACTURING COMPANY**

Main Sales and Engineering Office  
 EMPIRE BUILDING, CLEVELAND, OHIO

Factory and Foundry  
 MICHIGAN CITY, INDIANA