

Welcome to SavvyCard!

SavvyCard gives you the option to choose between two types of SavvyCards:

A **Full Profile** version, where your photo occupies the majority of the right-hand side of the button set and has the biggest impact on your SavvyCard design.

A **Headshot** version, where your photo is enclosed in a shape of some kind, usually used by those who don't want their photo to take up as much space or those who don't have a waist-up photo.



Full Profile SavvyCard



Headshot SavvyCard

Check your resolution (size)

For a **Full Profile** version, your photo will need a minimum of 1000px height and a minimum body portion from the waist up for the best visuals.

For a **Headshot** version, your photo will need a minimum of 400px height and both shoulders included in the image, uncropped or unblocked.



Full Profile



Headshot

HOW TO CHECK YOUR PHOTO RESOLUTION

Method 1

Place your mouse cursor over your photo file. After a couple of seconds a pop-out should appear displaying some information about the file. Your photo height will be the 2nd number (width x height). For example, if it shows 4000x2000, 2000px will be the total height of the photo.

Method 2

Right-click the photo file and choose 'Properties'. Navigate to the "Details" tab at the top of the box. It will display all file details. Scroll down until you find the resolution information.

Common problems

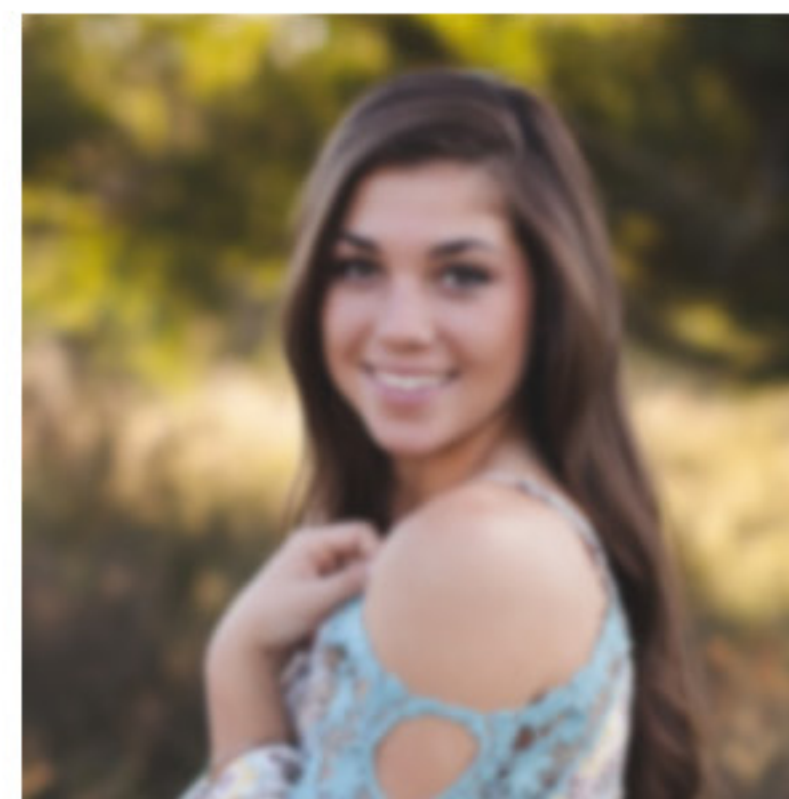
SavvyCard®



No Contrast With Background
(especially with loose hair)



Cropped Sides / Top



Blurred Face / Body



Odd Pose



Strong Lighting



Already Cropped Photos
(we cannot recover lost details)

Dont have a good photo?



No problem!

Even the most standard smartphone cameras have high enough resolution and quality to take a great picture! Ask a friend or colleague to take a photo of you against a light wall if you have darker hair color, or a dark wall if you have lighter hair color. Contrast is critical! Try to avoid harsh shadows on the wall behind you by having good lighting and standing a little away from the wall.

We will do our best to ensure you have the perfect photo on your SavvyCard. Feel free to send us a selection of photos if you are not sure which one would work best.

Thank You!

To submit your SavvyCard photo for cutout,
email support@savvycard.com!

