

# REPORTING & BUSINESS INTELLIGENCE

## Evaluate, Track and Measure Outcomes

The GuidingCare® platform leverages Tableau for reporting and business intelligence, and supports near real-time data processing that promotes operational and clinical business excellence. The Reporting & Business Intelligence module provides an easy-to-use, web-based user interface, offering more than 50 standard reports. This robust tool makes ad hoc report-building and analysis simple, so you can view the data that's most critical to you.

### GET A HOLISTIC VIEW OF PATIENT INTERACTIONS

Standard reports in the relevant GuidingCare modules include those for cost, utilization and quality reporting. Nearly every standard report lets users drill down into underlying data to generate holistic snapshots of patient interactions. Users can create complex reports on the fly as needed.

### EVALUATE PROGRAM COST & QUALITY

Customers can leverage multiple data fields in the system to display dynamic executive dashboards and reports. The reporting environment spans care and utilization management to deliver prompt program cost and quality insights, thanks to the flexible blending of data in risk-scoring, activity reports and quality outcomes.

### CREATE REQUIRED CMS REPORTS

GuidingCare includes all CMS-required universe reports in their specified formats for Part C, Part D, CDAG and ODAG. All fields in GuidingCare are reportable, including auto-generated date and time stamps.

### TRACK & MEASURE CLINICAL OUTCOMES

GuidingCare includes measures-based chart reporting for HEDIS, PQRI, CDAG/ODAG and other requirements that support clinical outcomes-tracking for physical and behavioral health.

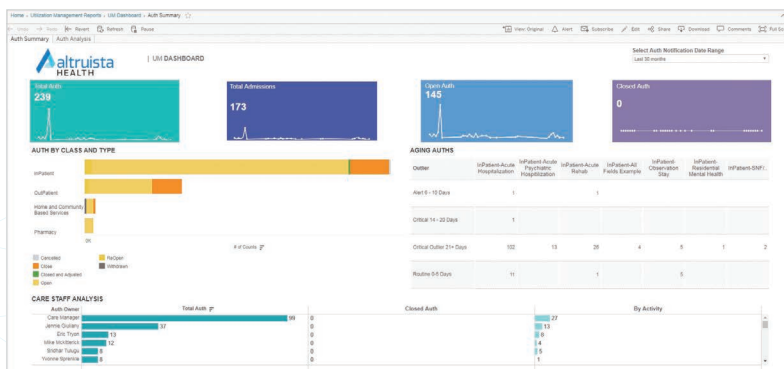
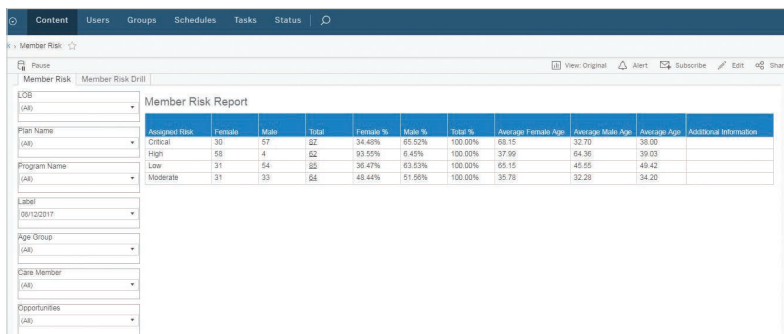
# REPORTING & BUSINESS INTELLIGENCE

## Manage Operations and Stay Compliant

GuidingCare standard reports support management of plan operations and regulatory compliance. Our flexible tool gives users customized reports that deliver only the data they wish to review. Users can build new reports and dashboards, as well as use the same data sets for multiple reports.

Standard reports and dashboards include:

- Appeals & Grievances
- Care Management
- CMS – Part C, Part D, CDAG and ODAG
- CRM/Member Services
- Utilization Management



## CONTACT US

hello@altruistahealth.com

703.707.8890

## ABOUT ALTRUISTA HEALTH

Altruista Health was founded in 2007 on a mission to provide innovative healthcare technology solutions that drive significant improvements in cost savings and health outcomes for all populations. Today, Altruista Health's GuidingCare® platform is used by health plans and provider organizations to streamline care management workflows, facilitate coordination among clinical, behavioral and community resources, accelerate quality improvement and promote engagement for more than 38 million members.