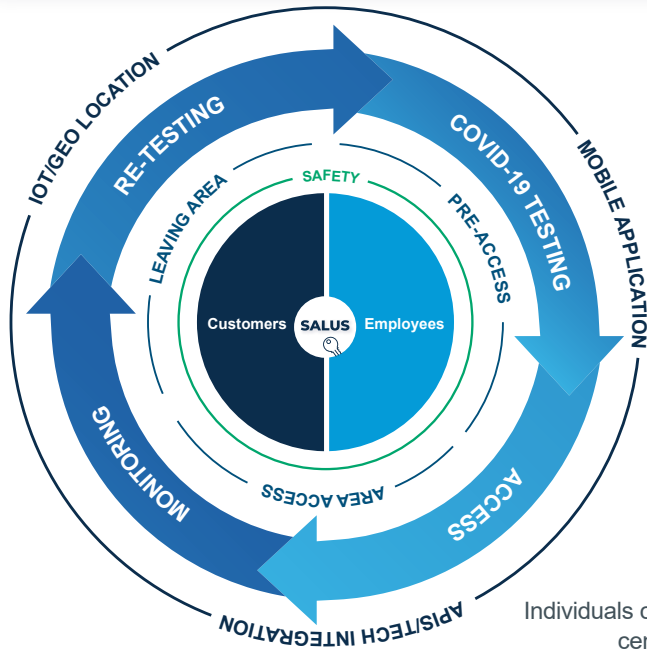


Salus

Keeping People Safe From COVID-19 In Mass-Gatherings at Convention Centers



The Salus modular mobile solution (patent pending) keeps people safe from the COVID-19 virus while at convention centers. Salus defines, harmonizes, and manages new processes and supporting technologies to ensure that only those that are COVID-19 negative, have COVID-19 antibodies, or have received the COVID-19 vaccination are able to enter crowded environments at conferences and convention centers.

At the heart of the Salus solution is the Salus Mobile Customer, Employee, and Tester app that stores and timestamps on-the-spot test results and grants access to the conference or convention center. If they are coronavirus-free, the app monitors their

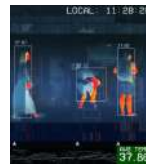
temperature and other symptoms in the conference or convention center and uses Geo-Tracking to know if they have left the convention center. Salus will then send the individual to be re-tested between 45-48 hours of exiting the property.

The Salus solution is agnostic to the type of COVID-19 testing kit and supporting technologies such as the thermal cameras, digital thermometers, and entry/exit IoT sensors that plug-and-play with Salus through APIs. All that is needed is a smartphone, our Salus mobile application, and the implementation of the Salus framework of processes.

Individuals can re-access the convention center but will be notified by the Salus app to be re-tested 45-48 hours after they have exited

The Salus app detects if a person leaves the interconnected convention center via geo-tracking, and records the time

Ongoing thermal camera and symptoms monitoring at conferences/convention centers



Salus Mobile App Solution



*Can include antibody testing and vaccine status. This will exempt immune Individuals from future testing, and Salus will grant them a permanent Access QR code.



Technical Specs

- ✓ Modular infrastructure platform allows for straightforward integration with systems at the convention center where applicable (PMS, access control, etc.)
- ✓ The microservice-based architecture allows integration with existing customer-facing applications
- ✓ Salus-provided apps available for both Android and iOS devices
- ✓ Browser-based admin portal allows for configuration of Salus from any device
- ✓ Flexible hardware integration mechanism allows Salus to remain "future-proof" as more advanced temperature monitoring solutions come to market
- ✓ COVID-19 test kit agnostic. Salus allows the configuration of any test kit with storable properties for test accuracy
- ✓ Leverages location services to ensure that once an individual has been allowed in the conference/convention center they will be flagged as needing a retest if they leave the space



Salus - Bringing us back to the experiences we love

