

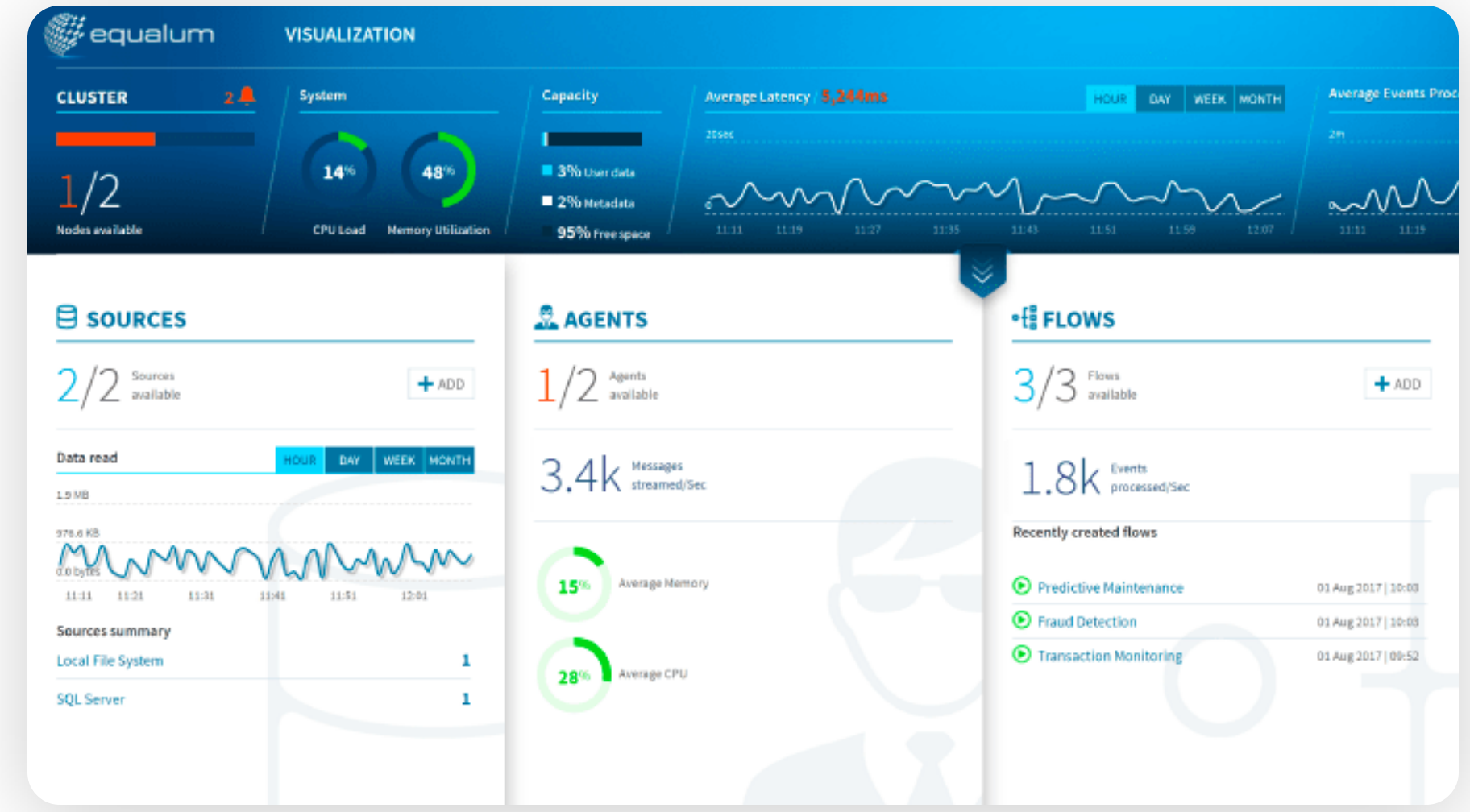
# Replicate Data Into MemSQL in Real-Time

Equalum seamlessly replicates data from data sources throughout the enterprise into MemSQL to power real-time analytics.

MemSQL's scalability and in-memory performance make it the frequent relational database of choice for data-rich enterprises.

But replicating data from other sources – operational data stores, legacy applications, IIoT control systems, and files – into MemSQL is challenging. Homegrown scripts are bug-prone, require custom integration for every file type, and fail under high data volumes.

And traditional ETL solutions, in addition to only supporting batch updates, are not optimized to load data into MemSQL efficiently – leading to slow performance and high usage of compute resources.



**Equalum** offers the most powerful MemSQL integration on the market, with proprietary performance tuning and a load process that decouples loading from processing – enabling re-streams and efficient downstream transformation. Equalum's solution leverages fully-managed Spark and Kafka, along with best-in-class change data capture (CDC) on the market, to replicate data from any database or application into MemSQL the instant it's created.

## What Makes Equalum Different



### Plug-and-Play

Seamless integration with MemSQL; breakthrough use of CDC and decoupling of loading from processing creates minimal system strain



### Performant

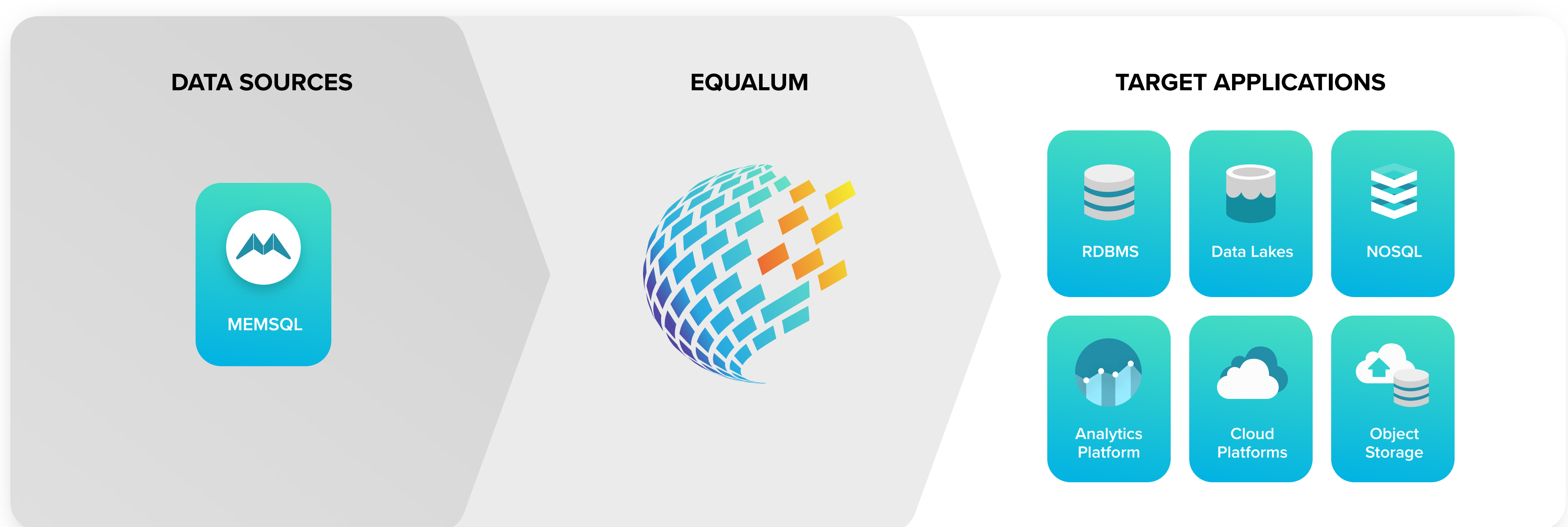
proprietary, optimized load process into MemSQL, ensuring high performance and data reliability for both column store and row store



### Scalable

Built with Spark and Kafka; supports loading into MemSQL from any number of sources in real-time

## How Equalum Works



### Case Study

#### Architecture Optimized for MemSQL

A Fortune 500 petroleum and natural gas exploration company uses Equalum to **stream 10,000 events/second** with latency of 1 second from drilling rigs to their MemSQL instance – powering real-time analytics for drill site optimization.

