



# OptionPower® 5.0

## STARTUP GUIDE



Toll Free 800.776.9974



© 2014 Option Technologies International LLC

6065 20120316

[www.optiontechnologies.com](http://www.optiontechnologies.com)

Interactive Audience Response Systems

## Constant Functions

These functions are available any time:

- **Verbal Question** (Shortcut key = **Q**) Automatically inserts a new slide for the presentation. The slide has the prompt “please respond now.” The facilitator may verbally state a question with up to ten response choices. The number of bars on the chart is determined by the highest number participants press on their keypad.
- **Show Hidden Chart** (Shortcut key = **F9**) You can change your settings to not display results after a question is polled. If the need arises to display polling results, the **F9** key overrides your settings and displays the chart.
- **OptionPower Help** (Shortcut key = **Ctrl+H**) Produces a small help box showing just these hot keys and show functions.
- **PowerPoint Shortcuts** During the show press **F1** to bring up a list of PowerPoint shortcuts ... **B** shows a black screen, **W** shows a white screen.



OptionPower® 5.0

## STARTUP GUIDE

© 2014 Option Technologies International LLC

This document is the copyrighted and proprietary property of Option Technologies International, LLC. It is designed for the use of OptionPower® license holders as they explore the software. Permission is hereby granted for such license holders to reproduce this document for internal use within their organizations. OptionPower® is a registered trademark of Option Technologies International, LLC.

**Option Technologies Interactive**

Technical Support 800.776.9974

[www.optiontechnologies.com](http://www.optiontechnologies.com)

- **Toggle Comparison (Shortcut key = F6)** Toggle between a single series chart and a chart displaying comparative data. Comparative data charts display a series of bars for the current responses and additional series for data from some other source. Sources for comparative data include: data from another question in the same presentation, data from a different polling session, or data entered manually. On Team and Participant Scoreboards the **F6** key toggles between points and times in which the participant or team responded.
- **Rotate Comparative Series (Shortcut key = S)** Rotate between the different series of data displayed on a comparative data chart. For example, rotate once to display the current responses only, rotate again to display the first series of comparative data only, etc. After rotating through the individual series, rotate again to display all of the series at once.
- **Order Results (Shortcut key = O)** Change the order of items displayed on ranking results scoreboards. Data may be ordered in three ways: high to low, low to high, or in alpha order.
- **Highlight Next Item (Shortcut key = T)** Highlight one item at a time on an Average Results or XY chart. Press **T** once to highlight the first item on the chart. The next item may be the first list item, the item with the highest average, or the item with the lowest average depending on the sort order of the bars. The first item may be the first list item, the item with the highest average or the item with the lowest average depending on the sort order of the bars.
- **Highlight Previous Item (Shortcut key = Shift+T)** Highlight the previous item.
- **Toggle Accumulative Scores (Shortcut Key = Ctrl+F7)** Calculate the scores for Teams or Participants using data from the current custom show only. The slides in some game shows, including The Answer Is template, are organized into custom shows. By default, OptionPower calculates scores using the points accrued in all shows. Use **Ctrl+F7** to calculate scores using points accrued in the current custom show only.
- **Rotate Scoreboard (Shortcut Key = F8)** Display the next set of participants on Team and Participant Scoreboards. A maximum of ten names may be displayed on scoreboards at any one time. If you have more than ten participants or teams press **F8** to rotate through the entire list.

## OptionPower Functions

### Polling Functions

These functions are available while polling is open:

- **Decrease to current (Shortcut key = D)** Decreases the number of keypads OptionPower will expect responses from on future polls to only those keypads that have responded to the present poll.
- **Increase to maximum (Shortcut key = I)** Increases the number of keypads OptionPower will accept (on this and future polls) to the maximum number of keypads specified in the keypad setup wizard.
- **Reset polling (Shortcut key = Z)** Deletes the responses collected so far and resets the poll timer (if a poll timer is on the slide).
- **Pause/Un-pause polling timer (Shortcut key = Pause)** If a poll timer exists on the slide, this pauses or restarts the timer. OptionPower continues to collect responses even if the poll timer is paused.

### Viewing Functions

These functions are available when viewing the chart or scoreboards:

- **Select a cross-tab question (Shortcut key = C)** Opens a dialog box for selecting a cross-tab filter to apply to the current polling data. For example, you could select another polling question (e.g., Gender), then break down data to the current poll by gender.
- **Rotate cross-tab categories (Shortcut key = R)** Once a cross-tab question has been applied (e.g., gender), you may filter the data by rotating among the cross-tab categories.
- **Load the current cross-tab question (Shortcut key = Ctrl+C)** Allows you to apply the “current” cross-tab question without having to bring up the “select cross-tab question” dialog.
- **Toggle data (Shortcut key = F7)** Toggle the data labels on the chart between percentages and numbers on standard polling slides. On Game Point slides, toggle between cumulative scores and scores from a single game point slide.
- **Re-poll (Shortcut key = V)** Poll the slide again. You may either replace the existing polling data or make a copy of the slide and enter a second set of responses.

## TABLE OF CONTENTS

### Installing OptionPower

Operating System Requirements .....	4
Supported Office Versions .....	4
Other Requirements .....	4
Install OptionPower .....	5
OptionPower Updates .....	5
Registration .....	6
Starting Help .....	7
Client Support .....	7

### OptionPower Controls

OptionPower Slides .....	8
OptionPower Objects .....	9
Properties .....	9

### Create an OptionPower Presentation

Load <i>OptionPower for Office</i> .....	10
Edit the Title Slide .....	10
Insert OptionPower Slides .....	10
Save the Presentation .....	11
View a Slide Show .....	11
Edit an Existing Slide .....	12
Change the Response Choices on a Slide .....	13
Start the Show Again .....	13
Saving Data .....	13
Reports .....	13

### OptionPower Functions

Polling Functions .....	14
Viewing Functions .....	14
Constant Functions .....	16

*Microsoft, Windows, Windows NT, Vista, Office and PowerPoint are registered trademarks or trademarks of Microsoft Corporation in the United States and/or other countries. OptionPower and OptionFinder are registered trademarks of Option Technologies International, LLC.*

## About This Guide

Welcome to the world of interactive presentations, participative workshops and immediate feedback surveys - the OptionPower® system. You are about to explore one of the most powerful and innovative tools available for creating interactive events.

The purpose of this guide is to help you get started; that is, to install and register the software, add polling slides into a presentation and conduct polling during the event. It will also provide you with general information about *OptionPower 5.0* and a conceptual overview of the application. This guide assumes that you have a general understanding of PowerPoint® software. Please refer to the Help system that is installed with the application for more detailed information about OptionPower.

## Installing OptionPower

### Operating System Requirements

Microsoft® Windows Vista (Service Pack 2 or later) 32 or 64 bit

Microsoft® Windows 7 (Service Pack 1 or later) 32 or 64 bit

Microsoft® Windows 8 (32 or 64 bit)

Microsoft® Windows 8.1 (32 or 64 bit)

### Supported Office Versions

Office® 2010 or 2013 (32 bit versions only)

Must have .NET Programmability Support installed

### Other Requirements (NOT delivered with install)

.NET Framework 4.0 or later

Hard Disk Space: 6GB

RAM: 4GB or higher

Processor: 2Ghz or greater

### Other Requirements (delivered with install)

MSSQL 2012 Service Pack 1 Express Edition

MDAC 2.8 and VSTO Runtime

## Change the Response Choices on a Slide

OptionPower allows you to change most things on a slide, but certain restrictions apply if you intend to keep the polling data from earlier sessions. If you want to add a response choice, you can only add it as the **last** choice. If you need to insert it into the middle of the choices, you will have to delete the polling data from the practice session.

## Start the Show Again

1. Restart the slide show by clicking the **System Checklist** button on the **OptionPower** tab and then clicking **Start Show**.
2. Select **Purge a single session and re-poll** and click **Next**. Confirm that you want to delete the previous session.
3. Enter new data for all of the slides ... you will see all changes made during editing.
4. Exit the show when finished.

## Saving Data

During a show, polling data is automatically saved to the database as each poll is completed. Use the *Import/Export* database utility to export polling session data from the database and save a copy of the data to another location.

## Reports

The *Report Manager* extracts data from the OptionPower database and saves it to Excel worksheets. You indicate what data should be extracted by selecting the polling sessions (if you ran the show more than once) and by selecting specific questions. You can also include a breakdown of the data by cross-tab categories.

3. The *Session Manager* dialog box will appear. Click **Next** to create a new session. The Polling Sessions contain the data collected when viewing a slide show. The *Session Manager* dialog box will appear each time you start a show giving you the opportunity to create a new, delete, or review existing polling sessions. Click the **Help** button on the dialog for an explanation of the options presented.
4. The first slide in your show is the title slide. Advance to the next slide using any of PowerPoint's *Next* commands (e.g., right arrow, page down, mouse click, spacebar). On the first slide, it may take a few seconds for the response counter to appear.
5. Enter responses on your computer keyboard.
6. When all of the responses have been received, the slide advances and the chart appears. You do not have to wait for all of the participants to respond, you may advance at any time to close polling and display the results.
7. Right-click the slide to view the shortcut menu and the list of functions you may use during the slide show. For example, **F7** toggles the data labels between percent and counts and **V** allows you to re-poll a slide.
8. Advance to your next polling slide and enter responses. When the chart appears go back to the previous slide. Move back and forth among the slides to get a feel for how navigation works.

You will follow these same steps to run the actual interactive presentation. However, in Step 1 you will choose *Keypads* as your data source.

#### **Edit an Existing Slide**

1. Exit the slide show.
2. Click the item you wish to edit (response counter, response choices, etc.) and make the desired changes. Additional response choices must be added at the **end** of the list of possible choices.
3. Save your presentation again when your edits are completed.

#### **Install OptionPower**

1. Insert the OptionPower 5.0 CD, Browse to your CD-ROM drive and double click the file named *setup.exe*, within the correct version of Office. The installer program will verify your current settings and begin the installation process. Please leave the settings at the defaults and follow the on-screen prompts to complete installation.

If at any time during the installation process the OptionPower installation does not continue automatically, please launch the OptionPower installation manually (Click the Setup.exe file from your original installation media). The OptionPower installation will pick up where it last left off.

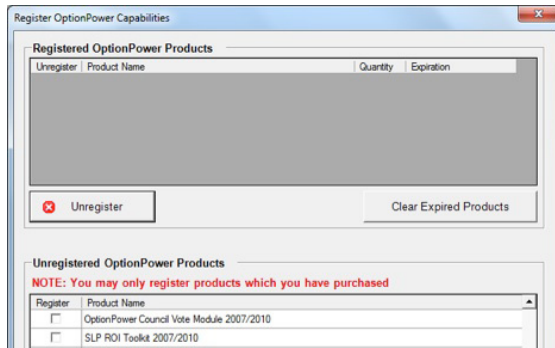
#### **OptionPower Updates**

Updates are posted on [www.optiontechnologies.com](http://www.optiontechnologies.com). You will need a user name and password to access the download pages.

## Registration

You will be prompted to register the first time you open OptionPower. Please make certain you have an active Internet connection before beginning.

1. Start PowerPoint and open or create a presentation file.
2. On the *OptionPower* tab, click **Enable**. A registration message box will appear. Click **Yes** to open the licensing menu.



3. In the *Un-registered OptionPower Products* section check the box for *OptionPower w/Keypads* or the box for *OptionPower Authoring* and the boxes for any additional products you purchased such as the Group Competition Module.
4. Click the **Register** button.
5. Enter your user name and password and click **Submit**.
6. If you do not have a user name and password click **Certificate Number**, enter the requested information and click **Submit**.

*Note: The certificate number is good for one use only. Please record your user name and password. You will need them when registering or unregistering products in the future.*

7. When registration is complete, Click **OK** and close the registration dialog.

5. Repeat this process for any place in your presentation where you wish to have an interactive polling slide.

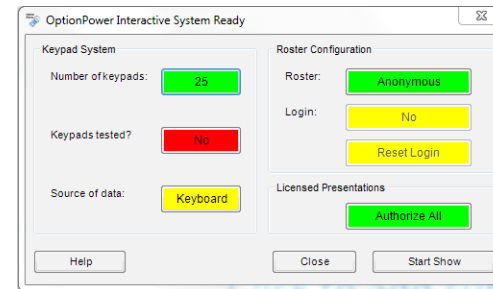
## Save the Presentation

1. Click the Office Button and choose **Save**.
2. Enter a name and location for your presentation.
3. Click **Save**.

## View a Slide Show

Click the System Checklist icon on the *OptionPower for Office* toolbar. The System Ready dialog box displays the settings that are critical to polling and uses a color scheme to indicate their status.

If the status is red, this indicates a show stopper and you should define or test the setting before you start your show. The yellow is a cautionary status, and you may need to check the setting so that the presentation runs according to your expectations. If the status is green, then this component has been set and is ready for the slide show.



To test your presentation prior to the actual event:

1. Click the **Source of data** button until it shows *Keyboard*.  
*Note: Use the keyboard to test your polling slides without setting up your hardware system. Make sure the Source of data option is set to Keypads when you poll with an audience.*
2. Click the **Start Show** button to view the show. (It will take a few seconds for OptionPower to check for existing polling data and start the show).

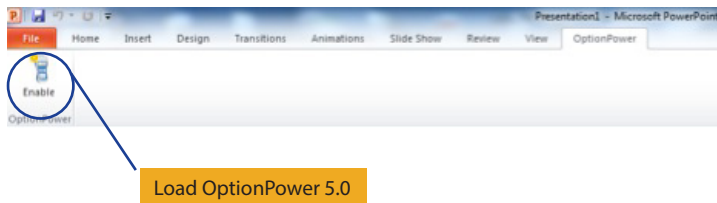


## Create an OptionPower Presentation

### Load OptionPower

1. Start PowerPoint.
2. Open an existing presentation or create a new, blank presentation.
3. Click **Enable** on the OptionPower tab.

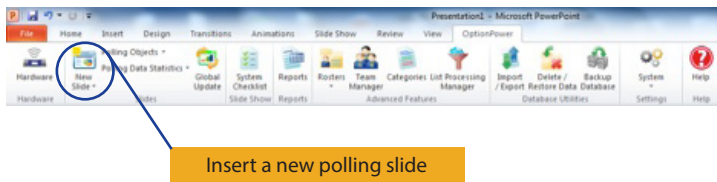
Note: If you open a presentation that contains OptionPower slides, OptionPower will automatically start.



### Edit the Title Slide

Click the title placeholder on the first slide and enter the title of your presentation.

### Insert OptionPower Slides



1. On the OptionPower tab, click the New Slide drop-down menu.
2. Select one of the layouts from the Single Digit Response category.
3. Enter a polling prompt (question) in the box labeled *Click to enter prompt*.
4. Enter the text of the response choices (possible answers) in the box labeled *Click to enter choices*.

### Starting Help

Choose either of these methods for additional help:

- On the *OptionPower* tab click **Help** for online instructions.
- If an OptionPower dialog is open, click the **Help** button on the dialog.

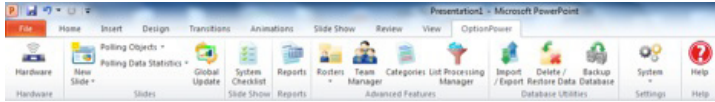
### Client Support

To contact the technical support staff please call toll-free 800.776.9974 between 9:00 a.m. and 7:00 p.m. Eastern time. For e-mail support please send messages to [support@optiontechnologies.com](mailto:support@optiontechnologies.com).

Technical support is available for clients currently enrolled in our maintenance program (see your maintenance agreement for details). Clients without maintenance support agreements will incur a per-incident support charge. The current rate, which may change without notification, is \$55 per incident.

## OptionPower Controls

Most OptionPower commands are accessed through buttons or dropdown menus on the OptionPower tab. They are organized in groups of related functions and placed in the sequence in which they are likely to be accessed when creating polling presentations.



For example, the first section contains the button for the hardware setup page from which you define and test your keypad system. The second section contains the buttons and menus needed to insert slides, insert polling objects and format the objects. The remaining sections contain the features you need to test your system before polling, to create reports, and to manage the OptionPower database.

There are also commands on both the slide and slide show shortcut menus (right-click). Use the slide shortcut menu to access the properties for the slide, the chart, and any polling objects that were added to the slide. Use the slide show shortcut menu to access the commands to change the way data is collected and displayed during the show

## OptionPower Slides

OptionPower slides are inserted from the *New Slide* menu on the OptionPower tab. OptionPower slides are standard PowerPoint slides to which specific polling objects have been added. Some of the objects that are common to polling slides are: polling prompts, response choice lists, and numeric response counters.

The polling prompt is the question or statement that initiates participant responses. The response choice list contains all of the possible answers to a question. The numeric response counter displays the number of responses that have been received and the number of keypads defined in the hardware settings.

## OptionPower Objects

All OptionPower objects can be grouped into one of the following two categories:

1. **Polling Objects** are added to slides to help facilitate the polling process. Response counters, for example, display the number of responses received so the system operator knows when to advance the slide.
2. **Polling Data Statistics** are text boxes that present polling data in ways that supplement the OptionPower chart object. For example, you may want to show the average or the standard deviation for the responses to a poll.

## Properties

All OptionPower slides and most OptionPower objects have property settings that you can adjust to customize your presentation. Properties are used to define the attributes of objects, specify that a slide should be treated in a particular way, and control the appearance of polling results during a slide show. To access the properties, right-click a polling slide, point to OptionPower Properties and click the properties you wish to change.