



STANDARD SERIES

SANITARY CONVEYORS

Sanitary design and construction balanced between washdown capability and affordability

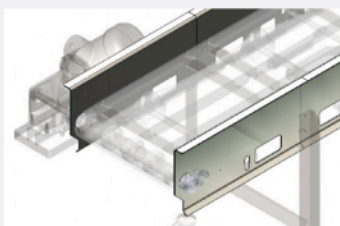
Clean-ability and value using food grade materials and stainless steel IP69K rated gear reducer and motor

Applications in a food plant where conveyors are not used in direct food contact but still require periodic washdown

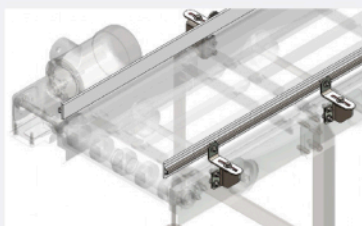
Standard Series Features:

- Heavy-duty construction
- Solid profile materials only with NO hollow tubing
- Food grade, Intralox plastic modular belting (S800/S900/S1100/S1600/S2400)
- Stainless steel spacers with bolted connections
- No Tools Disassembly of Carry-ways, Return Rollers
- White polymer bearing housings with stainless steel bearing inserts

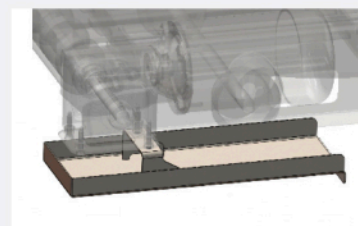
Standard Series Options: (many more available)



Extended Side Frames



Adjustable Guide Rails



Catch Pans