



Conference Brochure





A Beautiful Setting.....

From the moment you arrive at Buckinghamshire Golf Club, we will do our utmost to ensure that the service given is reflective of the elegant surroundings in and around the clubhouse of Buckinghamshire Golf Club.

Situated on the ground floor and first floor are six elegant suites, all of which enjoy a delightful view of the mature grounds. Our Queen Eleanor Suite and Heron Suite also overlook a beautiful stretch of the River Colne.

Please find enclosed information on our conference packages.

Our excellent delegate packages are designed to cover the fine details of your event.

Our events co-ordinator is dedicated to working with you, to assist in any way required, with the aim of tailor making your event to suit your requirements.

Meet.....

Room Hire and Capacity

MEETING ROOM	RATE	CAPACITY		
QUEEN ELEANOR	£550	Boardroom	36	Boardroom 32 With equipment
		U Shaped	28	
		Classroom	22	
		Theatre	90	
		Cabaret	36	
HERON SUITE	£500	Boardroom	24	Boardroom 20 With equipment
		U Shaped	26	
		Classroom	22	
		Theatre	80	
		Cabaret	28	
PECKHAM	£350	Boardroom	24	Boardroom 20 With equipment
		U Shaped	20	
		Classroom	16	
		Theatre	40	
		Cabaret	24	
MARGARET TINDALL	£300	Boardroom	16	Boardroom 13 With equipment
BOWYER	£250	Boardroom	12	Boardroom 10 With equipment
		U Shaped	10	
		Classroom	8	
		Theatre	20	
		Cabaret	18	
SWITHINBANK	£350	Boardroom	14	8 Delegates maximum Lounge Style
		U Shaped	10	
		Classroom	12	
		Cabaret	18	

We offer half day and hourly rates. Please ask at the time of booking.



Conference Package

Room hire

Three servings of tea, coffee and biscuits

Executive working lunch

Still and sparkling mineral water

Selection of cordials

Flipchart and marker pens

Screen

Delegate stationery

Complimentary internet high speed wireless connection

Soft drinks bar in the room charged on consumption

£52.50 per person (minimum numbers of 10)

Lunch Selection

EXECUTIVE WORKING LUNCH

£17.00 Per Person

OPTION A

Tortilla Wraps Filled with a Selection of Fillings
Lemon and Sea Salt Chicken Skewers
Cajun Potato Wedges
Sour Cream, Guacamole and Tomato Salsa
Green Salad

Banoffee Pie

OPTION B

Soup of the Day, Fresh Bloomer
Ploughman's Selection
Waldarf Salad

Mini Chocolate Tarts

OPTION C

Mediterranean Chicken Kebabs
Greek Salad
Tomato, Pesto Focaccia
Olive and Pickle Selection
Roasted Vegetable Couscous
Tatziki, Humous and Pita Bread

Executive Selection

EXECUTIVE ONE-COURSE SET MEAL- £15.00 per person

EXECUTIVE TWO-COURSE SET MEAL- £27.50 per person

EXECUTIVE THREE-COURSE SET MEAL- £31.50 per person

STARTERS

Parma Ham and Smoked Salmon Roulade with Chives,
Leaves and Lemon Vinaigrette

Grilled Goats Cheese en Croute with Mixed Leaves

Peppered Tomato Salad with Mozzarella Cheese
drizzled with Pesto

MAIN COURSES

Roasted Pork Loin with Garlic, Thyme and Confit Onions
served with Roquefort Mash, Apple and Vanilla Purée
and Port Jus

Pan Fried Chicken Breast with Pomme Purée,
served with Sautéed Wild Mushroom Sauce

Poached Salmon Fillet with Spinach, New Potatoes and
Caper Butter Sauce

Spinach and Wild Mushroom Filo Bundle
with a Stilton Sauce

DESSERTS

Lemon Posset served with Lemon Biscuit and Fresh Berries

Raspberry Crème Brûlée

Warm Chocolate Brownie with Chocolate Sauce
and Ice Cream

*Because of the type of service and cuisine we offer, we respectfully request that the same choice of starter,
one main course and one dessert is chosen for the entire group from the selection shown above.*

Additional Catering

CONTINENTAL BREAKFAST

Orange Juice
Selection of Pastries
Fresh Fruit
Tea and Coffee
£10.00 per person

ENGLISH BREAKFAST

Bacon, Sausage, Scrambled Egg,
Hash Browns, Mushrooms and Baked Beans
White and Brown Toast with Butter and Preserves
Served with
Tea and Coffee
Mineral Water and Orange Juice

Plated £17.00 per person

Buffet £15.00 per person

BEVERAGES

Orange Juice **£9.00 per jug**
Apple Juice **£9.00 per jug**
Mineral Water **£4.50 per bottle**
Tea and Coffee **£2.50 per cup**

DELEGATE BREAKS

Tea and coffee accompanied by:

Biscuits **£3.00**
Pastries **£4.90**
Madeira Cake **£4.90**
Mini Bakewell Tarts **£4.90**
Muffins **£4.90**
Sausage or Bacon Roll **£6.00**
Afternoon Cream Tea **£11.50**
Fresh Fruit **£3.50**

If any of your associates play Golf, why not impress them with 18 Holes of Golf on our John Jacobs designed course set in 226 Acres of Magnificent English Parkland at our special conference rate.



Equipment Hire Charges

LCD Data Projector (XGA)	£86.40
27" Television and DVD Player	£86.40
22" Television and DVD Player	£77.60
PA System	£86.40
Lectern	£50.40
Lectern (Desk Top)	£8.60
White Board	£28.80
Screen	£21.00
Flipchart	£16.00
Photocopying	£0.25 per sheet
Incoming Faxes	£0.55 per sheet
Outgoing Faxes	£0.50 per sheet
Conference Phone hire & Call Charges	£52.50 local calls
including hire of the equipment	£157.50
	£79 International calls

We offer complimentary wireless internet connection. Please ask at the time of booking for details.

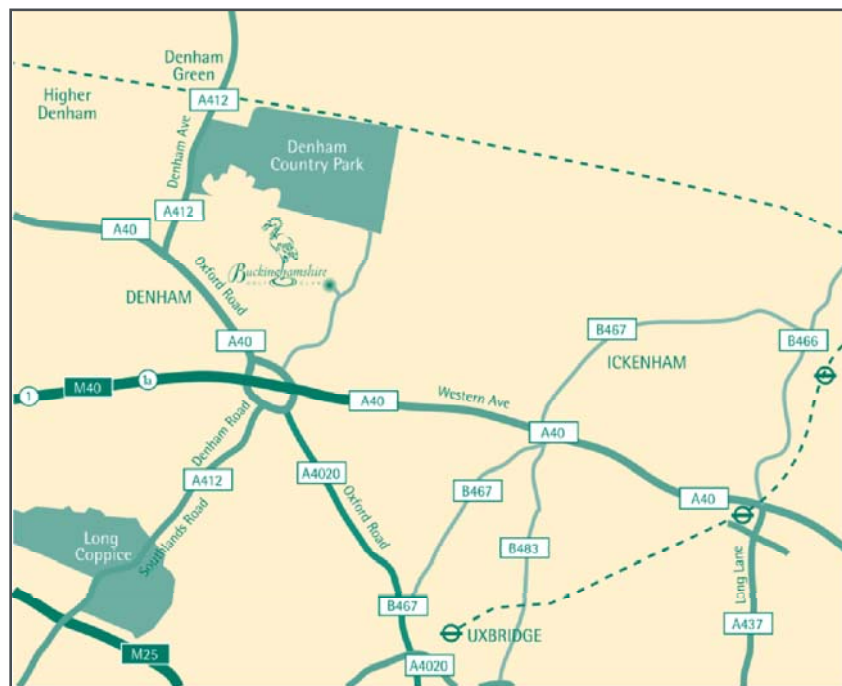
Location

From the M25 Junction 16

Please take the M40 in the direction of London. Leave the M40 at the next junction (J1). At the bottom of the slip road, turn left at the traffic lights. Turn immediately right at the mini roundabout and immediately left at the next mini roundabout. This brings you to Denham Court Drive (also signed Denham Country Park). Buckinghamshire Golf Club is at the top of Denham Court Drive. Drive up to the black wrought iron gates slowly and they will open automatically.

From London on the A40

Where the A40 becomes the M40 leave it at Junction 1 (signposted to Gerrards Cross). At the bottom of the slip road, turn right at the traffic lights and right again at the mini roundabout. This brings you to Denham Court Drive (also signed Denham Country Park). Buckinghamshire Golf Club is at the top of Denham Court Drive. Drive up to the black wrought iron gates slowly and they will open automatically.



Floor Plans

Reception Room Heights

Margaret Tindall:

Floor to pelmet. 3.3 mtr

Floor to ceiling. 3.9 mtr

Floor to skylight. 4.3 mtr

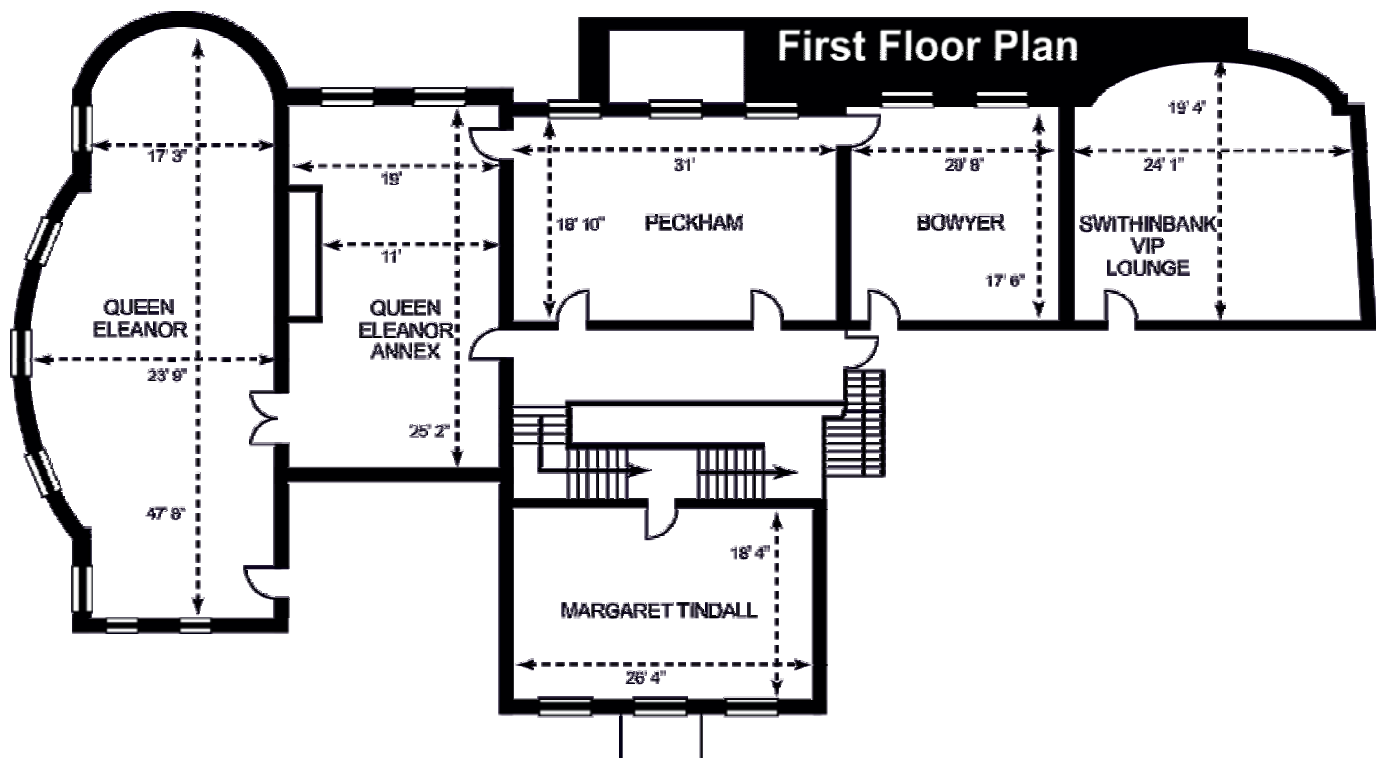
Queen Eleanor: 2.8 mtr

Queen Eleanor Bar: 2.6 mtr

Peckham: 2.6 mtr

Bowyer: 2.6 mtr

Swithinbank: 3.0 mtr



Golf Packages

Our golf packages are designed to offer a fixed price incorporating a private room for the whole day & your catering requirements.

18 HOLE PACKAGE

Breakfast on Arrival
18 Holes of Golf
Lunch or Dinner

From £126.00 per person

27 HOLE PACKAGE

Breakfast on Arrival
9 / 18 Holes of Golf
Lunch
9/ 18 Holes of Golf
Dinner

From £191.50 per person

WINTER PACKAGE

Breakfast on Arrival
18 Holes of Golf
Lunch or Dinner

29th October 2012 to 26th March 2013
Monday –Thursday

£68.00 per person

SPRING PACKAGE

Breakfast on Arrival
18 Holes of Golf
Lunch or Dinner

April
Monday –Thursday

£80.00 per person



Denham Court Drive, Denham, Buckinghamshire, UB9 5PG
Telephone: 01895 835777 **Fax:** 01895 835210
www.buckinghamshiregc.com