

# Rittal – The System.

Faster – better – everywhere.

## Rittal : The Spirit of Innovation

Let us take you on a journey through the World of Rittal: a company known worldwide for its enclosures, cooling solutions, power distribution products and software, that incorporates cutting-edge technology & automation, designed for efficiency and the highest standards of excellence. A company that lives the Industry 4.0 world and puts it into practice in every step of the process!



As a system provider, Rittal is The global company for innovative enclosure and housing technology. Rittal satisfies the highest demands in safety, ergonomics, energy and cost-efficiency.

**Faster** – Software tools for efficient engineering and a large immediate delivery program  
**Better** – Comprehensive range of system accessories for individual configuration and quick assembly  
**Everywhere** – Complete delivery and service network around the globe.

ENCLOSURES

POWER DISTRIBUTION

CLIMATE CONTROL

IT INFRASTRUCTURE

SOFTWARE & SERVICES



FRIEDHELM LOH GROUP

# Rittal – The System.

Faster – better – everywhere.

## Enclosures from the smallest to the largest

- Small housings and compact enclosures
- Enclosure systems
- Console and PC enclosure systems
- Support arm systems and command panels
- Stainless steel housings and enclosure systems
- The TS 8 top enclosure system is a proven solution with over 10 million units and counting installed in the field
- Rittal – A trusted name that produces over 15,000 enclosures per day



[www.rittal.ca/enclosures](http://www.rittal.ca/enclosures)

ENCLOSURES

POWER DISTRIBUTION

CLIMATE CONTROL



# Rittal Freestanding Enclosures



TS 8 modular enclosure systems provides unsurpassed flexibility, scalability, strength, and durability. From baying, panel installation, grounding or routine maintenance tasks, the TS 8 is safer and more time efficient than any other modular enclosure on the market.

TS 8 products excel on the plant floor and in the most extreme conditions. The TS 8 Stainless Steel 316 enclosure excels in industries like oil and gas, mining, pulp and paper, and food and beverage. Turn to TS 8 and make a change for the better.



## Carbon Steel Freestanding (Type 12)

- High load-bearing capacity of over 3000 lbs.
- Inner and outer mounting on the frame level for effective space utilization
- Integral enclosure protection channel prevents the ingress of dirt and water when the door is opened
- Optimum sealing achieved with 4-point lock system
- Full flexibility with the use of accessories, thanks to a fully symmetrical frame section, with identical accessories for the width and depth

## Carbon Steel Freestanding Disconnect (Type 12)

- Expandable and modular enclosure compatible with all standard TS 8 accessories
- Rigid flange door to accept a variety of high and low amperage operator handles
- Enhanced and greatly simplified hardware installation



## Carbon Steel Floormount (Type 12)

- Modular design flexibility
- 12" removable floor stand kits installed
- Overlapping doors for complete access to full size mounting panel and interior
- 4-point latching for impervious NEMA-12 seal

## Carbon Steel Floormount Disconnect (Type 12)

- The flexibility of Rittal's revolutionary modular design
- Rigid flange door to adapt to high or low amperage operator handles
- 4-point latching for impervious NEMA-12 seal



## Stainless Steel Freestanding 316-L (Type 4X)

- 30 percent more available mounting space than traditional unibody enclosures of equal dimensions
- Four-point latching system and continuous foamed-in-place gasket provide a water and dust proof environmental seal
- Padlock-able handle that provides both easy access and security
- Full functionality and expandability of the TS enclosure series
- Quick-release hinges that enable fast and easy door removal and replacement

[www.rittal.ca/enclosures](http://www.rittal.ca/enclosures)

Change for the Better.



ENCLOSURES

POWER DISTRIBUTION

CLIMATE CONTROL

IT INFRASTRUCTURE

SOFTWARE & SERVICES

FRIEDHELM LOH GROUP

# Rittal Wallmount Enclosures

Protection is Built-In.

NEMA Protection and Security Comes Standard.

Rittal Wallmount enclosures set the standard for maximum use of space and ease of installation. WM enclosures incorporate precision engineering for virtually any application. NEMA protection ratings are ensured through a secure locking system, foamed-in-place gasket and knife-edge perimeter.



## Hygienic Design (HD):

- 30° roof angle allows liquids to run off easily
- Fully welded construction of 304 stainless steel
- One-piece, replaceable blue silicone gasket provides a secure seal while distinctive color makes particles easy to spot and remove
- UL Type 4X with an FDA approved gasket material
- Ideal for food/beverage, pharmaceutical, or any environment with sanitation concerns and high-pressure washes

## Carbon Steel:

- Multi-fold single body construction provides superior strength and stability with fewer welds
- Optimum surface finish with electrophoresis dip-coat primer and powder-coat paint
- Flange collar opening and seamless foamed-in-place gasket create a tight continuous seal
- UL Type 12 / 3R / 4 rated
- Includes depth adjustable galvanized mounting panel
- Ideal for indoor/outdoor use

## Stainless Steel:

- Fully welded construction of 304 or 316L stainless steel
- UL Type 4X rated
- Rear blind nut design maintains 4X integrity
- Ideal for indoor/outdoor use in harsh, corrosive environments

[www.rittal.ca/wallmounts](http://www.rittal.ca/wallmounts)

ENCLOSURES

POWER DISTRIBUTION

CLIMATE CONTROL

IT INFRASTRUCTURE

SOFTWARE & SERVICES

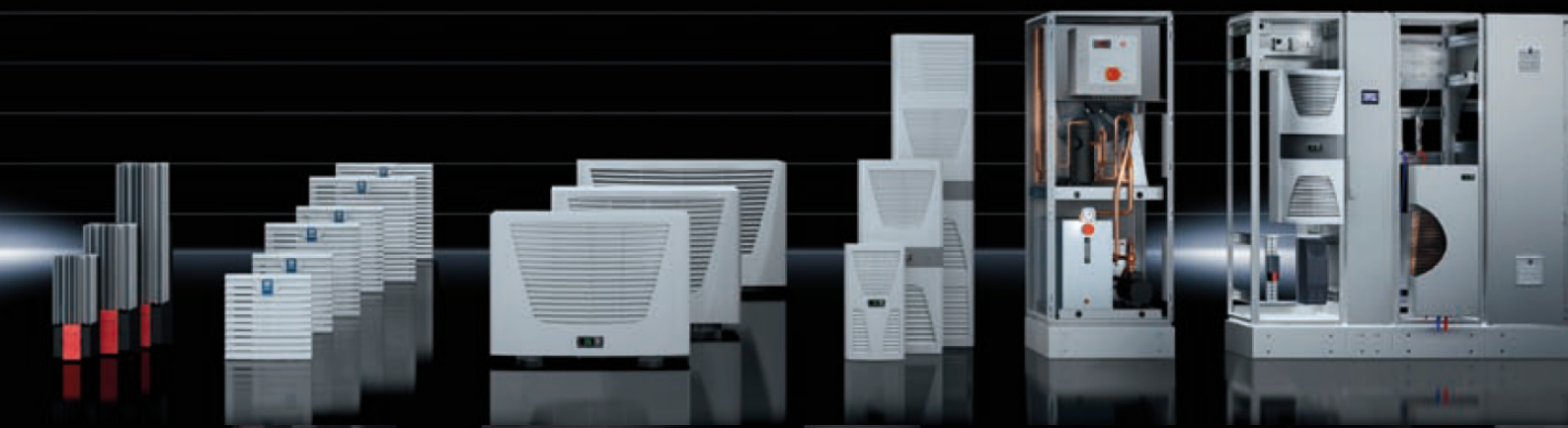


# Rittal – The System.

Faster – better – everywhere.

## Climate Control from the smallest to the largest

- Air cooling
- Cooling units
- Liquid cooling
- Enclosure heaters
- Up to 10% more output – with TÜV-tested cooling units
- Energy savings of up to 45% with cooling units from the “Blue e” generation



[www.rittal.ca/climatecontrol](http://www.rittal.ca/climatecontrol)

ENCLOSURES

POWER DISTRIBUTION

CLIMATE CONTROL



# Rittal – The System.

Faster – better – everywhere.

➤ **Rittal Climate Control:  
Save upto 75% energy costs!**



## Blue e+ Wall-mounted Air Conditioners

- UL Type 12
- 6,000–20,000 BTU
- Energy Efficient
- Touch Screen Controller
- Nanocoated Condenser
- Multi-Voltage



## Top Therm Air-to-Water Heat Exchangers

- UL Type 12
- Thermal Output 17.5–90 w/k
- Roof- and Wall-mounted Versions
- 115V, 230V, 400V, 3~
- Intelligent Comfort Controller
- Energy Efficient
- Maintenance Free
- Optimal for Extreme Ambient Conditions



## Top Therm Chillers

- Centralized, Efficient Cooling Using Water
- 3,412–150,000 BTU
- Intelligent Comfort Controller
- Nanocoated Condenser
- Ideal for Machine and Enclosure Cooling
- Multi-Voltage



## Enclosure Heaters

- Positive Temperature Coefficient (PTC) Technology
- UL Type 12
- Thermal Output 30–2700 BTU
- Maintenance Free Design



## Filter Fans

- UL Type 12
- UL Type 3R, 4, 4X, with optional Hose-proof Hood
- 12–529 CFM
- Tool-less Assembly
- Reversible/Diagonal Fan Motor
- Roof-Top Design Available



## Top Therm Air-to-Air Heat Exchanger

- 34–2,730 BTU
- 115V and 230V Available
- Quick-connecting Terminals
- Available With or Without Fans



## Thermoelectric Coolers

- Uses the Peltier Effect
- 341 BTU
- Compact, Lightweight, Efficient
- Multiple Mounting Positions
- 24V DC or dual 100–240V option



## Top Therm Blue e+ Wall-mounted Air Conditioners

- UL Type 12
- 1,000–15,000 BTU
- Available in Carbon Steel or 316 Stainless Steel 4X
- Nanocoated Condenser
- Integrated Condensate Evaporator
- Multiple Mounting Positions

[www.rittal.ca/climatecontrol](http://www.rittal.ca/climatecontrol)



# Rittal – The System.

Faster – better – everywhere.

## Power Distribution from the smallest to the largest

The proven, highly flexible power distribution system for individual requirements. From small distribution boards, individual switchgear and control systems, to high-current power distributors for infrastructure and industrial applications.

- RiLine – the busbar systems and components for switchgear and control systems
- Ri4Power – the system construction kit for low-voltage switchgear
- Enhanced planning confidence – optimal design with Power Engineering



[www.rittal.ca/powerdistribution](http://www.rittal.ca/powerdistribution)

ENCLOSURES

POWER DISTRIBUTION

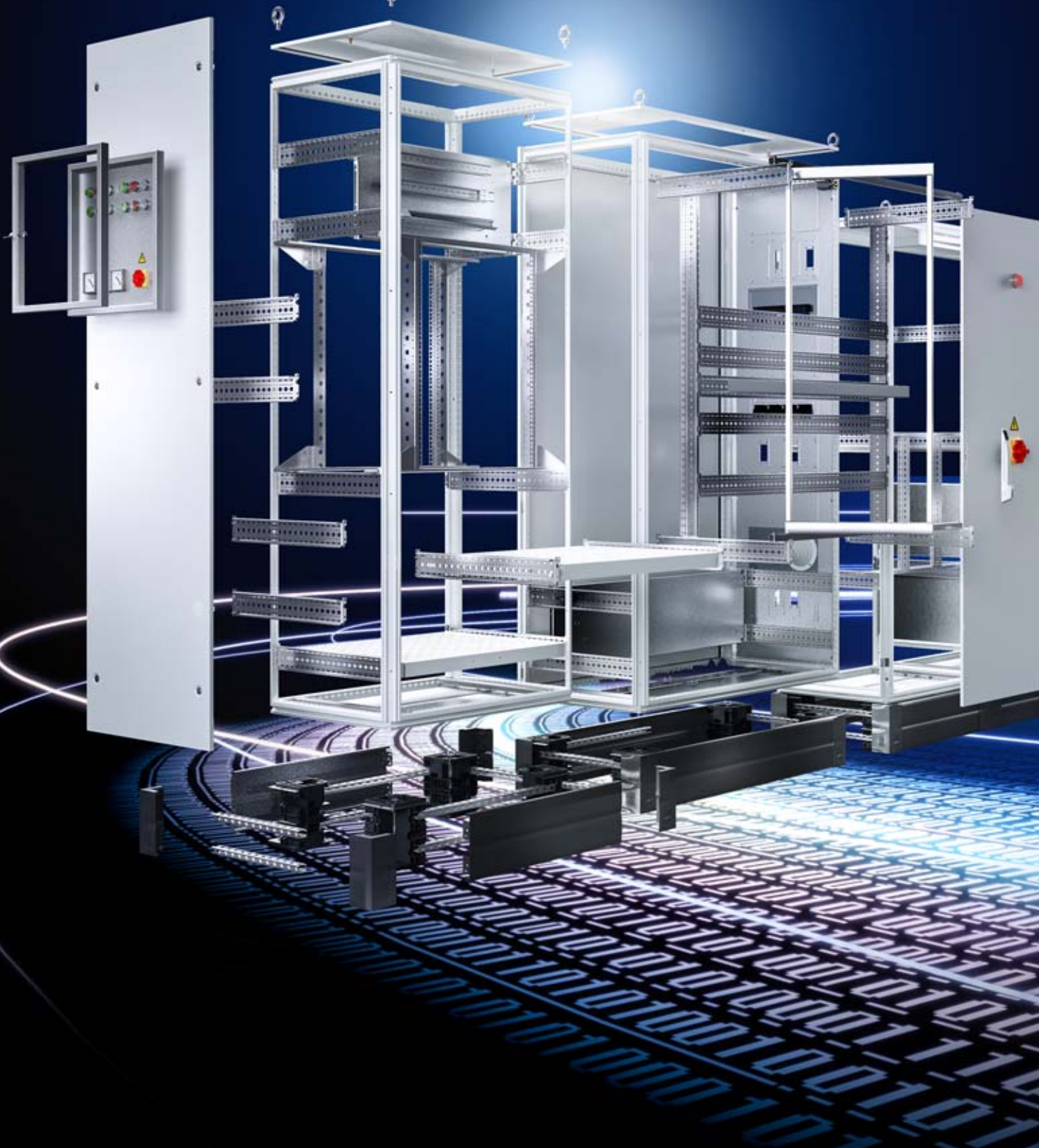
CLIMATE CONTROL

# Rittal System Accessories

Bases, Plinths, Walls, Doors, Locks, Lights, Cable Management, Pendant arms, Consoles for Maximum Flexibility, Simplified Access

Rittal has a comprehensive range of accessories for enclosures, climate control and power distribution, that offer excellent benefits:

- Expand customization and lengthen the service life of installed enclosures
- Climate system accessories improve efficiency and installation
- Tested & certified busbar accessories provide flexibility in power distribution
- HMI accessories are designed for comfort, usability and ease of entry

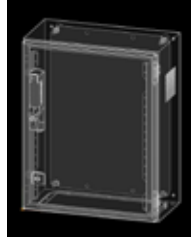


# Online Tools to Help You Make Informed Decisions

Rittal makes it easy for you to select the right enclosure for your application with online configurators, selectors and apps. Determine what enclosure is right for you, design it, add accessories and order.

## Rittal Configuration System

This updated, simple to use tool, allows for customers to create and output error-free enclosure holes and cut-outs and accessory placements. The user has the ability to digitally place holes, cut-outs, and accessories using a 3D enclosure model viewing tool. Leverage your RiCS drawing as you go straight to the enclosure modification and assembly process. With thousands of standard parts in-stock, Rittal can ship your enclosures fast with cut-outs and drilled holes completed.



[www.rittal.ca/configurators](http://www.rittal.ca/configurators)

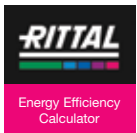
## Rittal Industrial Enclosures Selector

The Rittal Industrial Enclosures Selector for iOS is an easy-to-use tool to find your next Rittal enclosure.

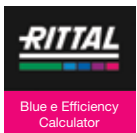


# Calculators, Configurators and Apps

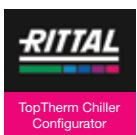
Rittal provides calculators, configurators and apps to assist you in making the most informed decisions regarding your Rittal products.



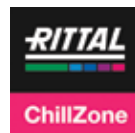
**Rittal Energy Efficiency Calculator** for Cooling Units (Blue e<sup>+</sup>). Compare your current cooling unit to the Blue e<sup>+</sup> to determine your energy savings. <http://bit.ly/RittalEfficiencyCalc>



**Blue e Efficiency Calculator**  
Blue e cooling units provide savings in both cost and CO<sup>2</sup> emissions. Enter your current system information to discover the Rittal difference. <http://bit.ly/BlueEcalc>



**Rittal Chiller Configurator**  
The TopTherm chiller configurator enables you to select an economically efficient solution for process cooling. <http://bit.ly/ChillerConfig>



## Blue e<sup>+</sup> ChillZone app

Rittal created the ChillZone app, an energy savings estimator for its Blue e<sup>+</sup> line of industrial enclosure cooling solutions. The app lets you easily compare annual cost savings between an existing system and Rittal Blue e<sup>+</sup> products. What's more, you can even compare specific competitive products by inputting a specific product number or that product's average energy efficiency ratio (EER).

**iOS:** <http://bit.ly/ChillZoneAppiOS>

**Android:** <http://bit.ly/ChillZoneAppAndroid>



## RiTherm Climate Control

Simplify the time-consuming and complicated process of calculating how much cooling your enclosure needs with this app. It also includes a rapid climate control system selection feature. Just enter temperature specs, enclosure dimensions, type of cooling solution needed and RiTherm calculates a summary of climate control equipment you'll need.

**iOS:** <http://bit.ly/ThermAppiOS>

**Android:** <http://bit.ly/ThermAppAndroid>

[www.rittal.ca/configurators](http://www.rittal.ca/configurators)



# Custom from Standard

**Rittal can deliver high-quality enclosure modifications quickly & efficiently, increasing your profitability.**

**Let Rittal modify your enclosures before you even receive them!**

You can go straight to the enclosure assembly process and leverage the added time to add new jobs into your workflow. With thousands of standard parts in-stock, for virtually every application, Rittal can ship your enclosures fast with the cut-outs and drilled holes completed!

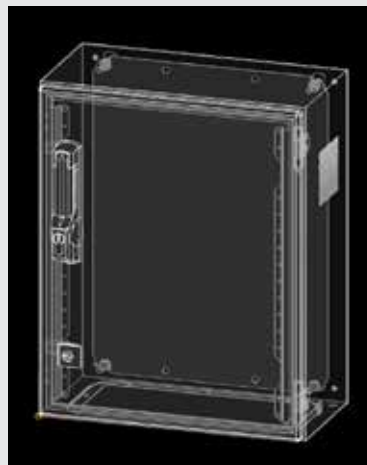
## What's Included in the program:

- Wallmounts, junction boxes, and freestanding enclosures including SE8 / TS8 products in both carbon and stainless steel. Thousands of in-stock products.
- Holes, cutouts, and installation of accessories, tapped holes on mounting panels only - no PEMS or Studs.
- Baying up to 3,500 mm length, additional cost of baying hardware and FMDC interconnecting hardware will apply.
- Contact your Rittal distributor for program rules, pricing, and product delivery information.

## Required Drawings:

- Fully dimensioned 1 to 1 scale, Rev controlled at time of order. DWG, DXF, or files from Rittal Configuration System (RICS), and EPLAN are acceptable for the program.
- Only drawings on Rittal cabinets are eligible for program.
- RICS can provide completed configurations and assembly instructions and is available for all wallmount products and most TS8 and SE8 options.

Go to [www.rittal.ca/configurators](http://www.rittal.ca/configurators).



[www.rittal.ca/ras](http://www.rittal.ca/ras)

