

Cayman Islands **Soft Curfew Guide**



CAYMAN ISLANDS
GOVERNMENT

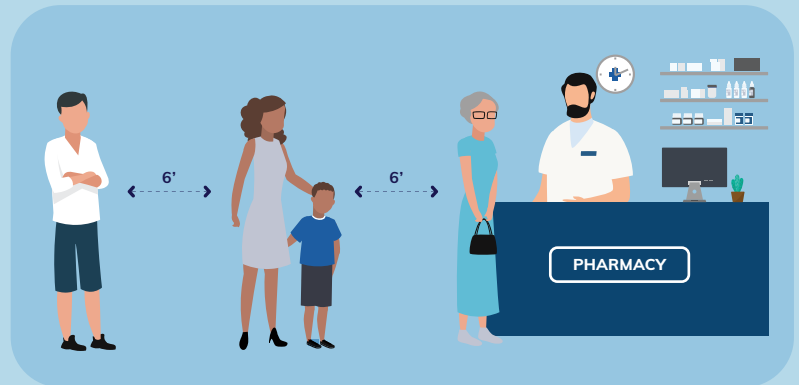
How the Soft Curfew Works

The soft curfew during the daytime, introduced on **Saturday, 28th March 2020**, allows the population limited movement to conduct essential tasks and builds on previous meeting bans enacted by Government under the **Public Health Law** (2002 Revision). A still ongoing, hard curfew at nighttime that requires closure of **all** but essential businesses is enacted under the **Police Law** (2017 Revision).

01 | What is Soft Curfew or “Shelter in Place”

During this daytime curfew persons are still expected to remain in their place of residence, inclusive of their yard space.

Exceptions



Essential Outings

Any person may leave their homes but only to engage in **essential travel** to the following public places:

- » health care facilities;
- » supermarkets;
- » convenience stores and minimarts;
- » pharmacies;
- » retail banks, building societies and credit unions;
- » gas or refilling stations, to refuel a motor vehicle.

The above businesses are exempt from soft curfew but will open only between the hours of **6am** and **6pm**. Retail banks, building societies and credit unions will open only between the hours of **9am** and **1pm**.

The numbers of customers allowed inside a place of business at any one time, should be managed to allow each customer to distance themselves at least **six feet** or **two metres** from any other person.

In fact each person in a public place must **maintain a distance of at least six feet or two metres** from another person.

Convenience stores and **minimarts** are also subject to a further restriction of having no more than **six customers** inside at any time.

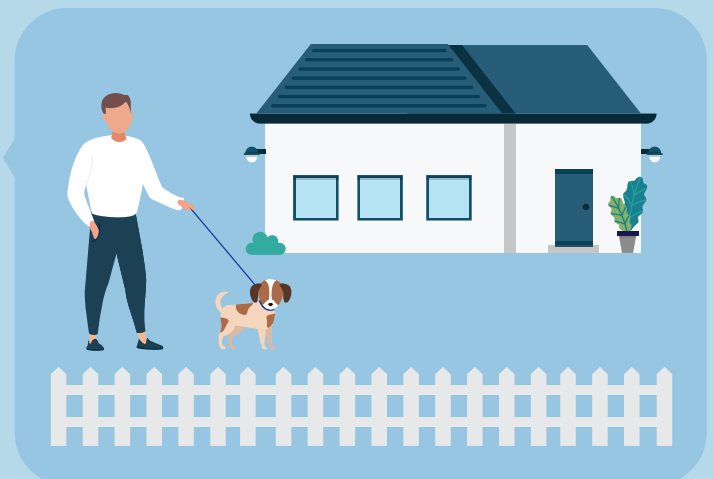
Exercise

People may also engage in outdoor exercise, which includes walking their pet. This may be done alone or together with a family member living at the same residence, for no more than an hour-and-a-half each day, between the hours of **6am** and **6pm**.

At such times persons must also maintain a distance of at least **six feet** or **two metres** from any other person. Exercise **must not** be carried out in a public pool, a public gym, around or in a strata pool or a strata gym.

Dangerous Situations

Persons who are required to leave their place of residence because they are at risk of injury or risk of death, are exempt from the shelter in place provisions.



02 | Who is essential?

Persons considered to be **essential staff** are exempt from the shelter in place requirements **but only** when carrying out official or employment related duties. They may also move during hard curfew when carrying out official or employment related duties.

This includes but is not limited to:

- Police officers
- CBC officers
- Fire officers
- Prison officers
- DCFS child protection and residential care workers
- Sanitation and waste workers
- Staff within a health care facility
- Persons delivering emergency medical services;
- Essential officers of any water, electricity or other utilities sector. This includes the provision of electronic communications, including print and electronic media.
- Persons employed to physically deliver water or cooking gas to premises;
- Persons who provide care to other persons with a disability, or who are otherwise vulnerable persons;
- Non-profit organisations and persons that engage in the preparation and delivery of food and supplies to persons with disabilities, or to persons who are vulnerable persons, subject to approval by the **Ministry of International Trade** via curfewtime@gov.ky,
- Taxi-drivers, on condition that there are **no more than two passengers** in the taxi at any one time;
- Persons involved in agriculture and food production;
- Persons engaged in the provision of emergency veterinary services;
- Persons engaged in the exercise of Cabinet, parliamentary or judicial duties;
- Persons providing services connected with the loading and unloading of cargo ships and with the storage and delivery of goods;
- Persons employed by a business licensed to provide security guard services;
- Persons employed by restaurants to provide food delivery services, **until no later than 9pm**; persons employed by businesses other than restaurants to provide food or grocery delivery services, **until no later than 9pm**;
- Persons who travel to restaurants, which provide **drive-through** or **curb side collection** of food, until no later than **6pm** and;
- Civil servants, as designated by the Chief Officer of the Portfolio of the Civil Service, for the purposes of performing their employment duties;



Persons with questions about which businesses and personnel are deemed essential, and may be exempted from the shelter in place provisions, should contact curfewtime@gov.ky.

03 | Closure of Non-essential Workplaces

To facilitate **hard and soft curfew conditions**, all non-essential establishments, institutions, businesses, organisations and offices have been closed.

Businesses may require employees to **work remotely** from home.

All persons employed within the public service, unless specifically designated as essential workers, shall work remotely from home.

04 | Other Bans and Closures

The following activities are **banned at all times** whether during hard or soft curfew:

- Private parties that include any person outside the immediate household;
- The business of a restaurant, except only drive-through services, delivery of food or curb side collection of food;
- Visiting or permitting entry to any person to —
 - » A private strata pool, strata gym or playground;
- Works of construction of any sort, apart from urgent home plumbing, electrical or roof repairs;
- Offer for hire or seek to travel on
 - » a boat, sailing inter-island, except for transport of freight;
 - » inter-island private commercial sea transport that is non-essential;
- Hosting or attending a wedding, which hosts ten or more persons other than the bride, bridegroom, official witnesses and the marriage officer;
- Hosting or attending a funeral, except ten members of the immediate family, six pallbearers, at least one officiant and essential mortuary staff.

The following categories of **public meetings** and **gatherings** are also **banned at all times**:

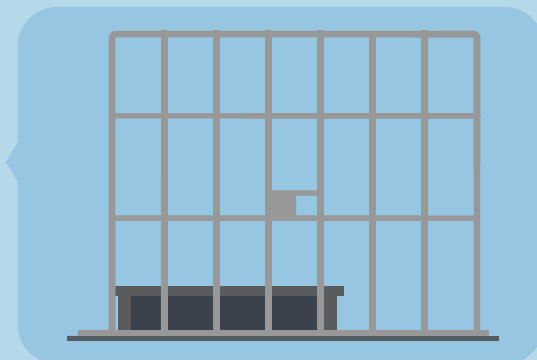
- Leisure, recreational or spiritual activities including those organised by:
 - » service clubs,
 - » faith-based organisations,
 - » community organisations,
 - » civic organisations and
 - » business organisations;
- Parades, and social activities related to such parades, including stage shows and parties;
- Sporting events;
- Concerts;
- Conventions;
- Conferences;
- Graduations; and
- Fundraisers

05 | Penalties

A person who, without lawful authority, remains in a place other than the confines of their own residence or yard space, inclusive of the person's yard space, commits an offence and **is liable on conviction to a fine of one thousand dollars and to imprisonment for six months.**

Any other breach of the terms of the soft curfew is liable to a similar fine.

Violations of the hard curfew fall under the Police Law and persons are **liable on conviction to a fine of three thousand dollars and to imprisonment for twelve months.**



06 | Resources

While this document is meant to assist with understanding the Regulations, the Regulations remain the authority on what persons should and should not do during this time, and may be accessed via <http://www.gov.ky/portal/pls/portal/docs/1/12940549.PDF>.