

To DISPLAY A UCSC TRACK:

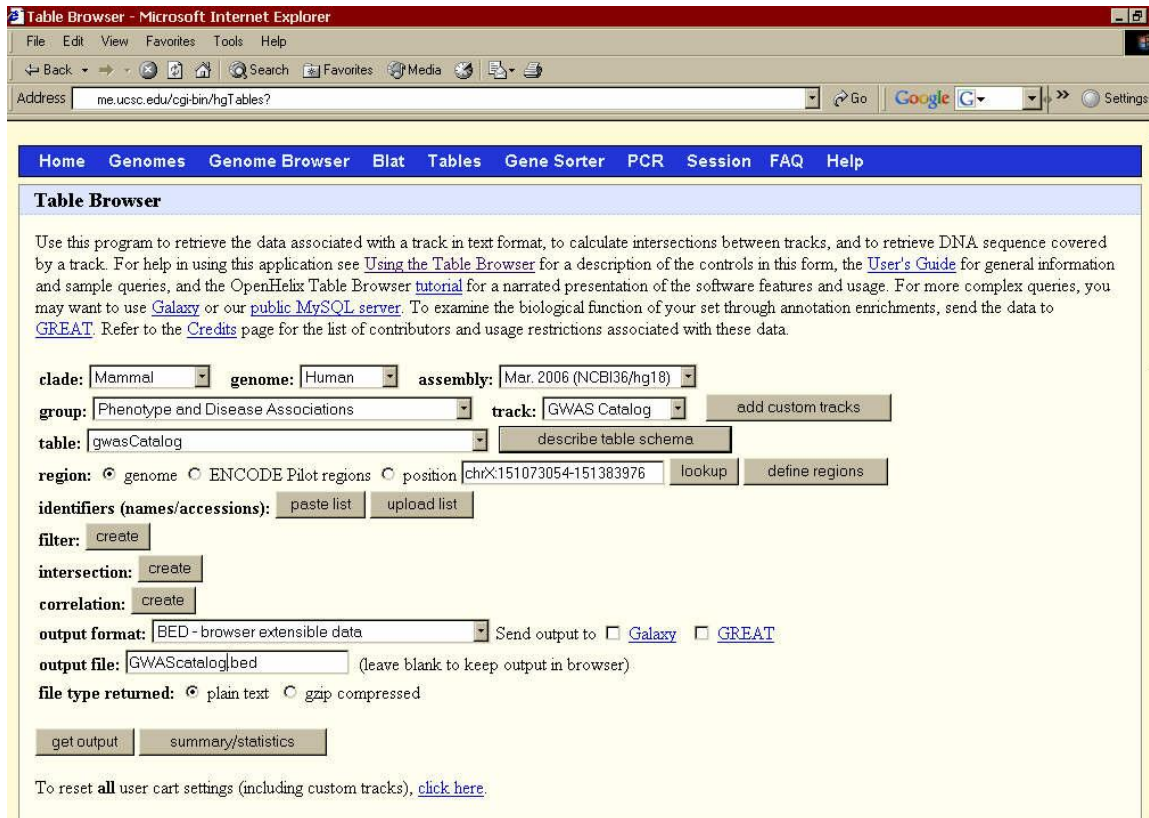
Various types of custom annotation tracks can be added by a user and displayed within Nexus Copy Number. One such type is an annotation track from the UCSC Genome Browser. This is a three step process requiring you to obtain the BED file from UCSC and placing it within the Nexus installation directory:

1. Obtain the BED file from the UCSC web site
2. Save the BED file in the **customtracks** folder of the Organism/Build folder of the Nexus Copy Number installation directory
3. Select the new track in **Options->Track Selection** within Nexus Copy Number

These steps are illustrated below.

STEP 1 - OBTAIN THE BED FILE FROM THE UCSC WEB SITE

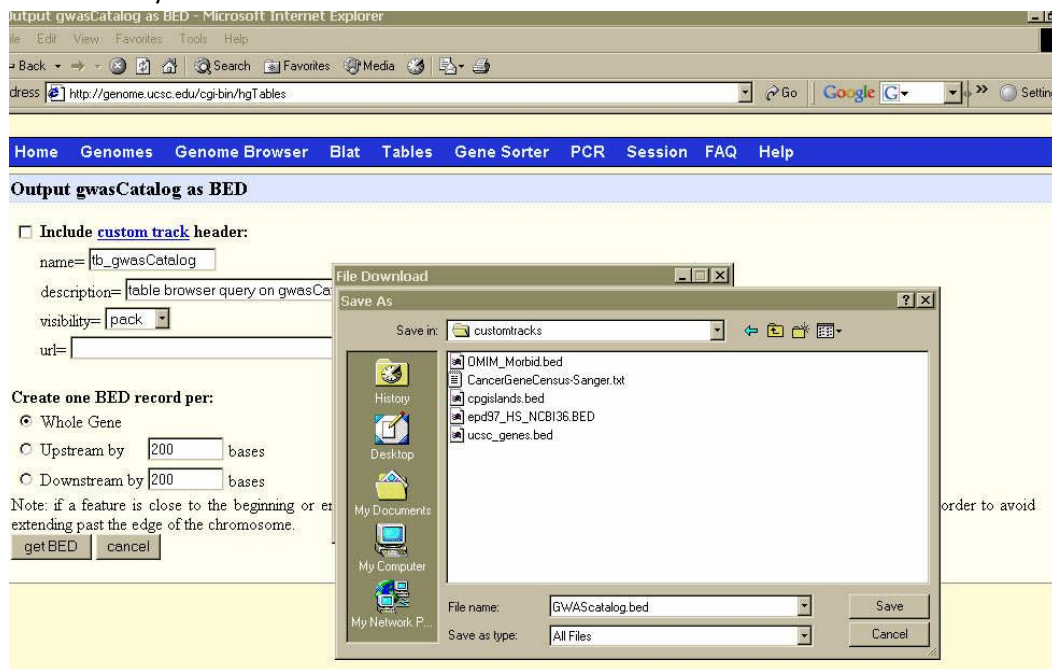
1. Go to <http://genome.ucsc.edu/cgi-bin/hgTables?command=start>
2. Select a track (“GWAS Catalog” for example).
3. Select BED for the “output format” field, enter the file name in the “output file” field and click on the **get output** button.



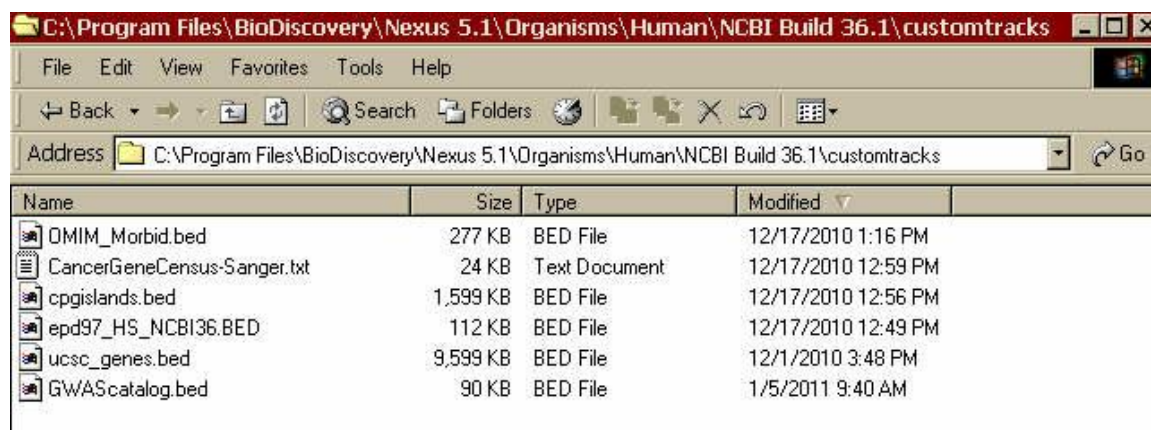
STEP 2 – SAVE THE BED FILE TO THE NEXUS INSTALLATION DIRECTORY

1. On the resulting screen, click on the **Get BED** button.

2. Save the file to the **customtracks** folder of the appropriate Organism/Build folder of the Nexus installation directory.



customtracks folder:



STEP 3 – SELECT THE NEW TRACK VIA THE FILE->OPTIONS MENU

1. Open a Nexus project corresponding to the same Organism/Build as where you stored the track.
2. Select **Options** under the **File** menu.
3. Click on **Track Selection**, select the BED file you just saved, and click **Apply**.

Nexus - nightly test project (Human NCBI Build 36.1)

File Help

data Set Comparisons External Data Nexus DB

Load Descriptor Load Data Select View Delete Reset Duplicate Add Factor Load Factors

Load Descriptor	Sample	Data Type	Status	Quality	% LOH
<input checked="" type="checkbox"/>	S1	Affymetrix CNCHP Log Ratio	Processed	0.125	8.20

Options

Track Selection Aggregate Defaults Filter Data Analysis Options Display Options Database Options

- control6_group2
- CancerGeneCensus-
- cpgislands.bed
- epd97_H5_NCBI36.E
- GWAScatalog.bed
- OMIM_Morbid.bed
- ucsc_genes.bed

Selected Samples: 1

Ready

Save Cancel Apply