

# nørdic

condos

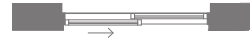
## 2 bedroom + den - F3

interior living area: 680 sf

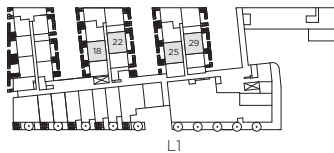
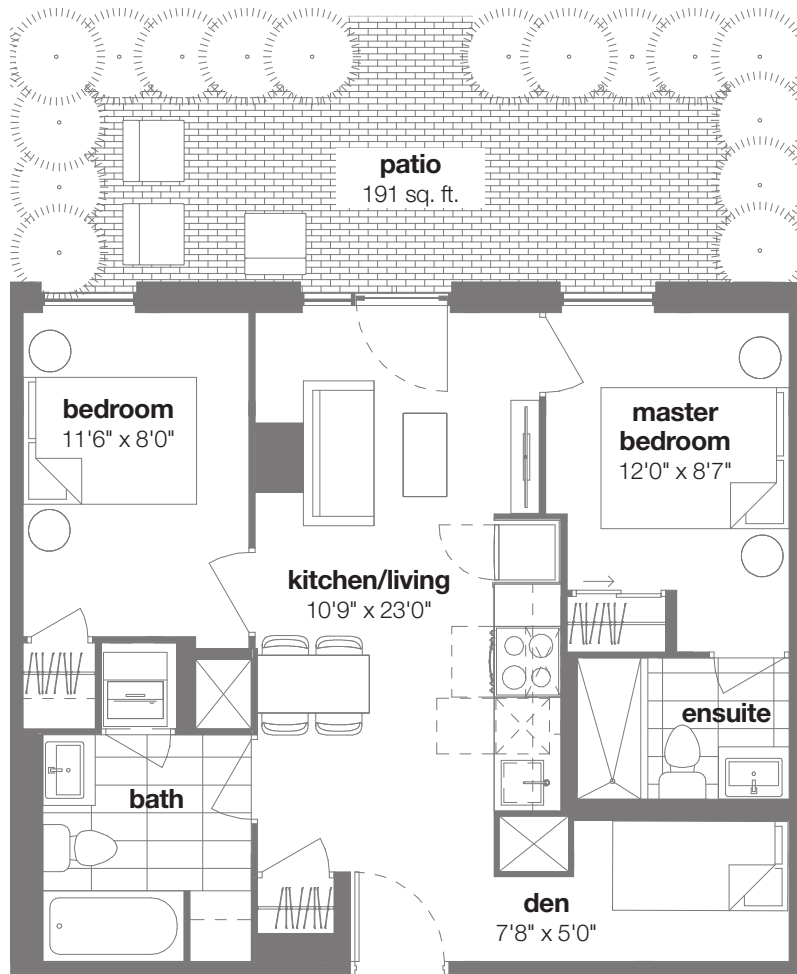
patio: 191 sf

total living area: 871 sf

juliet balcony  
level 2



patio  
level 1



Materials, specifications and floorplans are subject to change without notice. All renderings are artists' conception. All floorplans have approximate dimensions. Actual useable floor space may vary from the stated floor area. E. & O.E. Balcony depths vary depending on floor level locations.

# nørdic

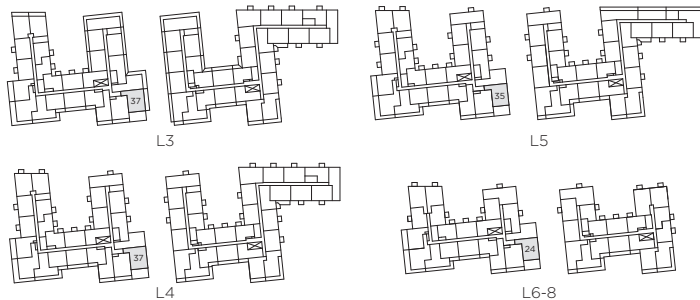
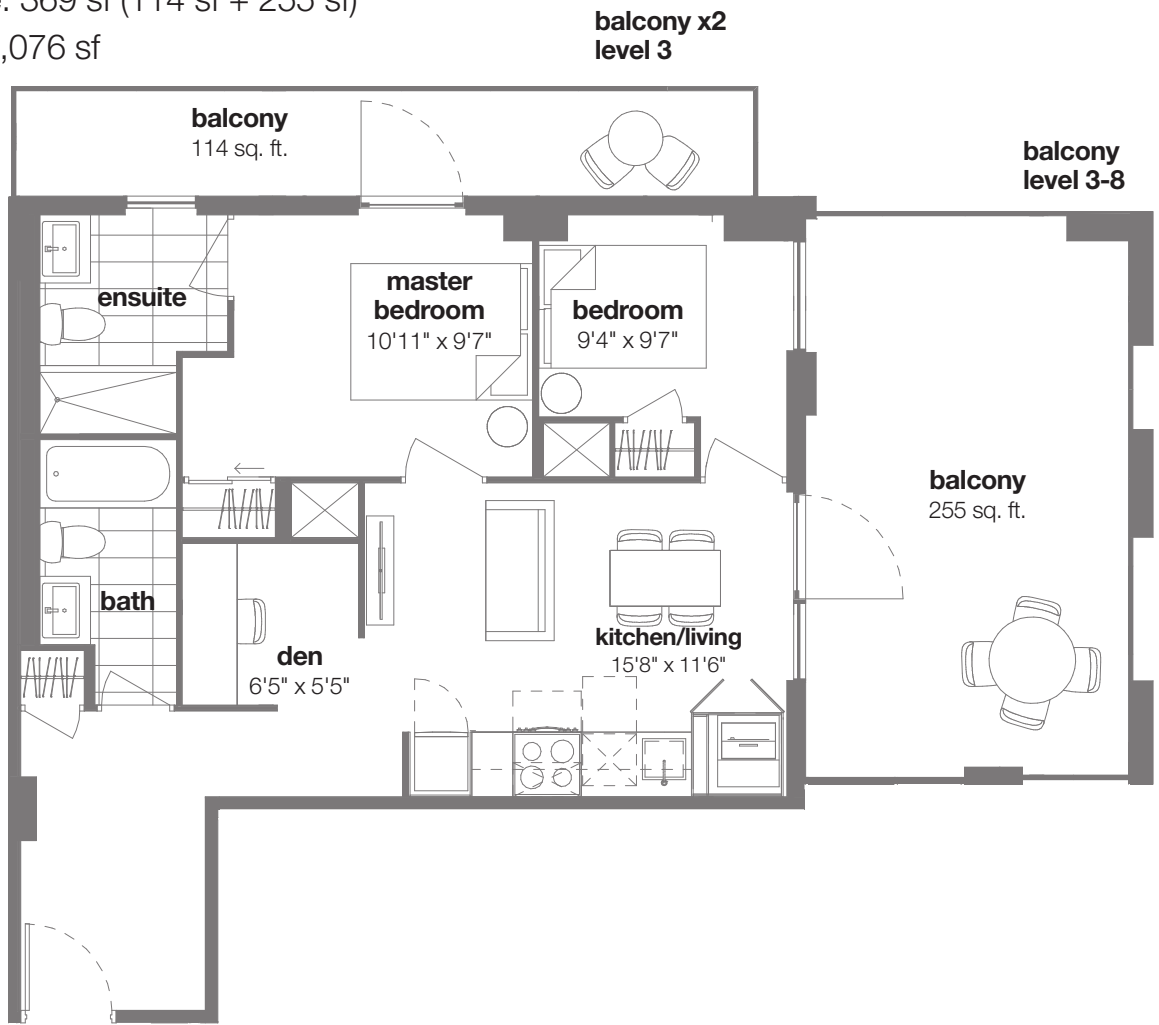
condos

## 2 bedroom + den - F6-B

interior living area: 707 sf

balcony + terrace: 369 sf (114 sf + 255 sf)

total living area: 1,076 sf



Materials, specifications and floorplans are subject to change without notice. All renderings are artists' conception. All floorplans have approximate dimensions. Actual useable floor space may vary from the stated floor area. E. & O.E. Balcony depths vary depending on floor level locations.

