



LESLIEVILLE'S LANDMARK ADDRESS

CONDOS · LOFTS · TOWNS

Exclusive Broker Worksheet Campaign

This information is to be communicated between you and your client. Pricing and floorplans are not to be posted on-line or shared with other Agents.

CONDOMINIUM UNITS

MODEL	SUITE TYPE	STARTING FLOOR	APPROX. SUITE SIZE (Square Feet)	VIEW	OPENING PRICE	EXCLUSIVE AGENT PRICE
1D-C	1B+D	4	640	W	\$585,900	\$575,900
1D-B	1B+D	4	647	E	\$589,900	\$579,900
2-M	2B	4	657	E/W	\$629,900	\$609,900
2-A Patio	2B	1	705	E/W	\$645,900	\$625,900
2-A	2B	2	705	E/W	\$655,900	\$635,900
2D-E	2B+D	3	880	N	\$721,900	\$701,900
2D-M	2B+D	6	871	E	\$739,900	\$719,900
2D-D	2B+D+M	5	856	S	\$809,900	\$789,900
2D-V	2B+D+M	6	891	W	\$809,900	\$789,900
3-A	3B+M	2	1022	NW	\$829,900	\$809,900
2D-H	2B+D	4	862	S	\$849,900	\$829,900
3-H	3B	4	899	NE	\$939,900	\$919,900
3-G	3B+D	2	1102	NE	\$949,900	\$929,900
3-O	3B+D	7	946	S	\$949,900	\$929,900
3-D*	3B	7	1006	SE	\$959,900	\$939,900
2D-P	2B+D	8	868	NE	\$989,900	\$969,900
2DT-C	2B+D+M	1	1412	E/W	\$1,239,900	\$1,219,900

* floor plan coming soon

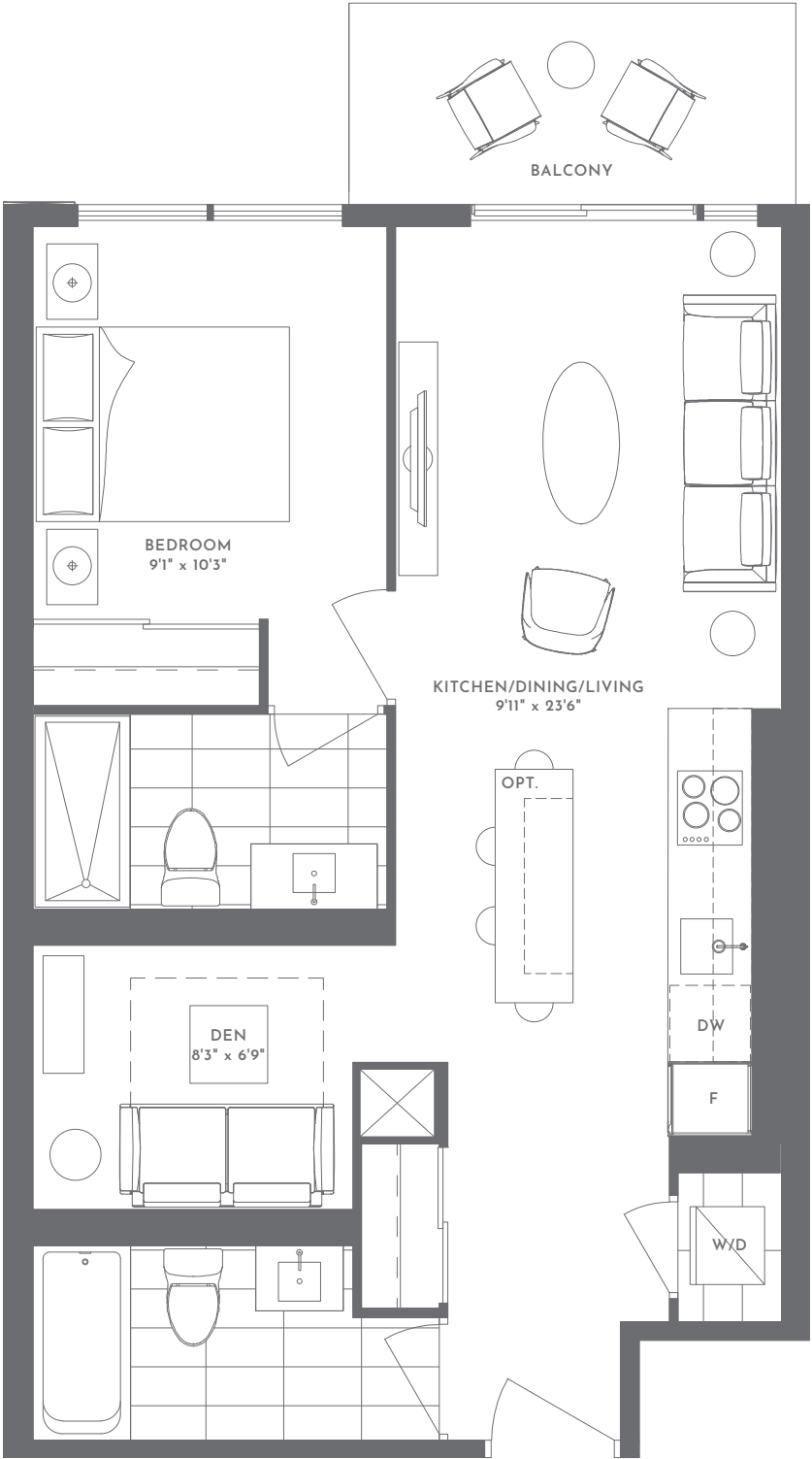
SOFT LOFTS

MODEL	SUITE TYPE	STARTING FLOOR	APPROX. SUITE SIZE (Square Feet)	VIEW	OPENING PRICE	EXCLUSIVE AGENT PRICE
1L-B	1B+M	2	807	S	\$809,900	\$799,900
2DL-D	2B+D	2	1014	E	\$1,019,900	\$999,900

ONE BEDROOM + DEN
1D-C

INTERIOR S.F. 640
EXTERIOR S.F. 60*
TOTAL S.F. 700

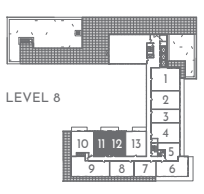
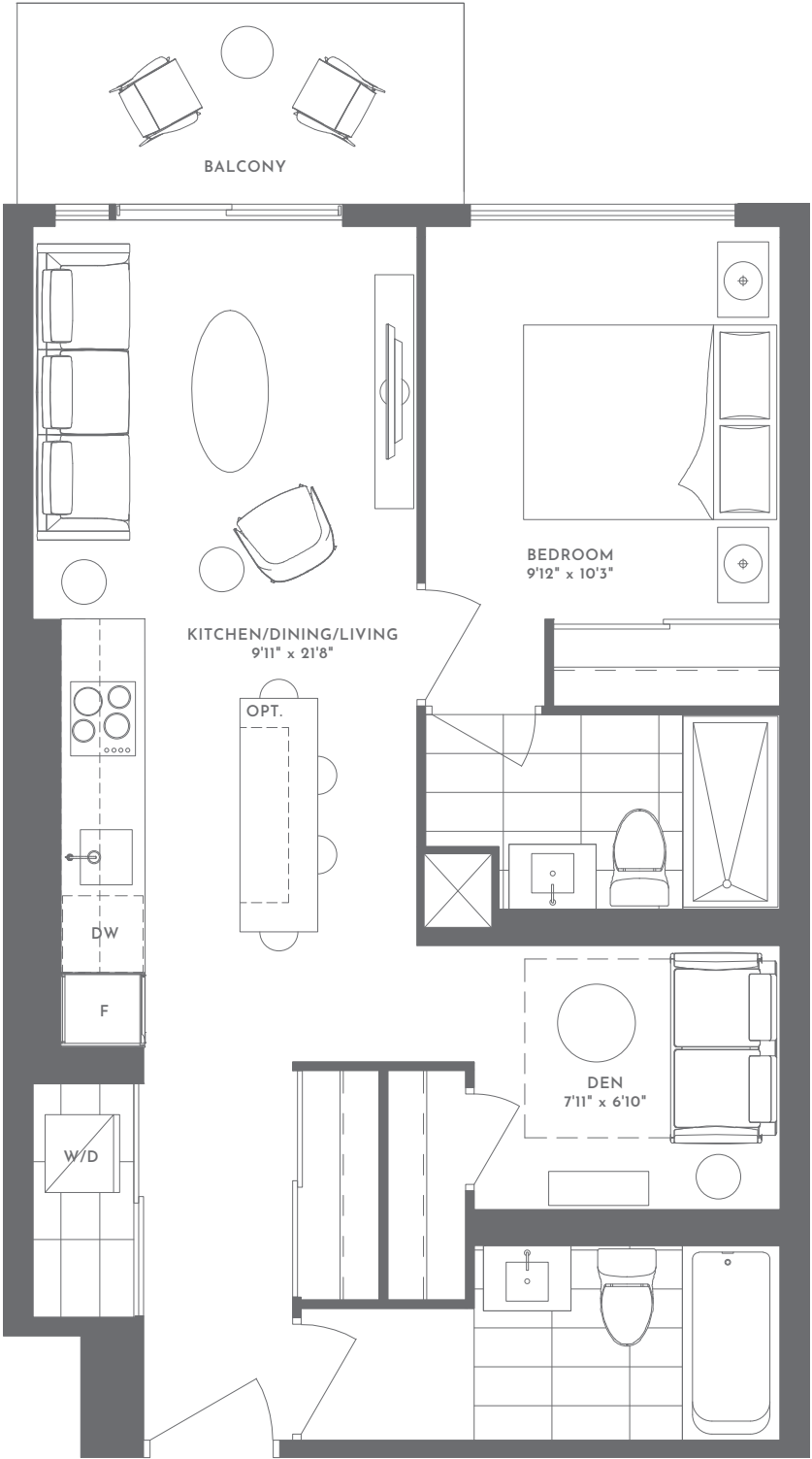
WONDER



ONE BEDROOM + DEN
1D-B

INTERIOR S.F. 647
EXTERIOR S.F. 60*
TOTAL S.F. 707

WONDER

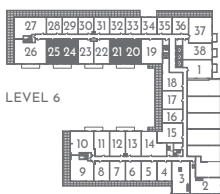
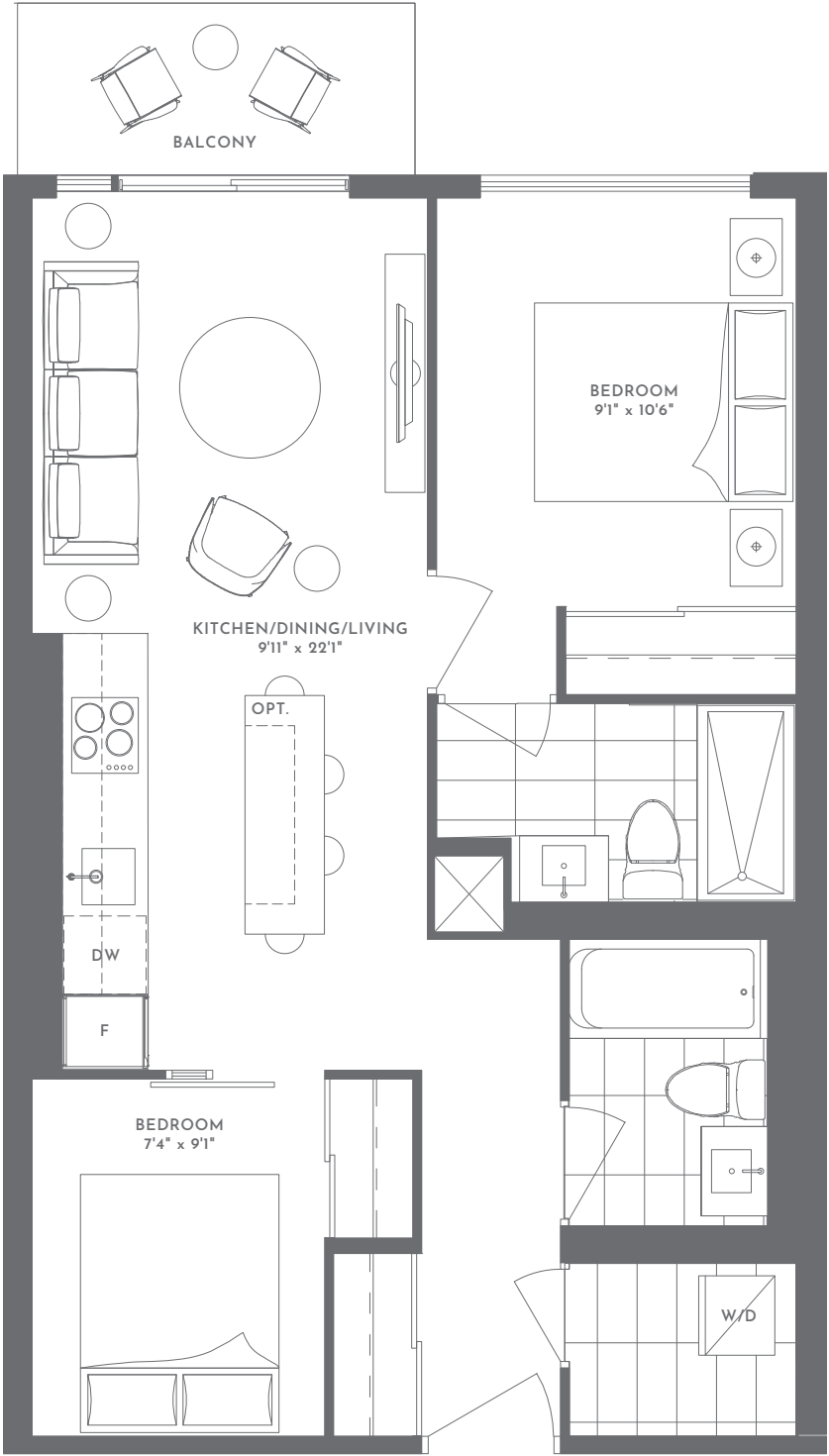


TWO BEDROOM

2-M

INTERIOR S.F. 657
EXTERIOR S.F. 60*
TOTAL S.F. 717

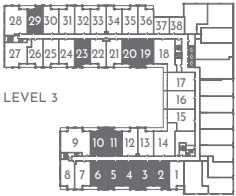
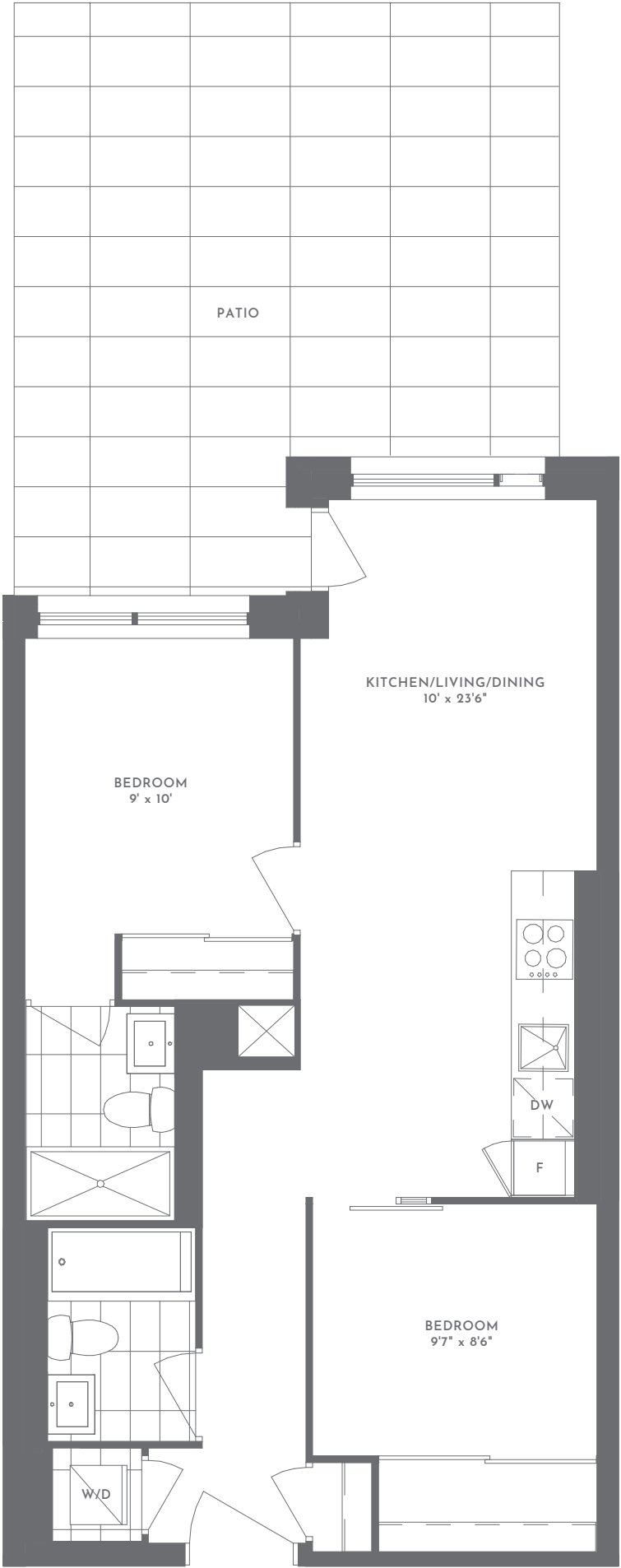
WONDER



TWO BEDROOM
2-A ALT

INTERIOR S.F. 705
EXTERIOR S.F. 195*
TOTAL S.F. 897

WONDER



TWO BEDROOM

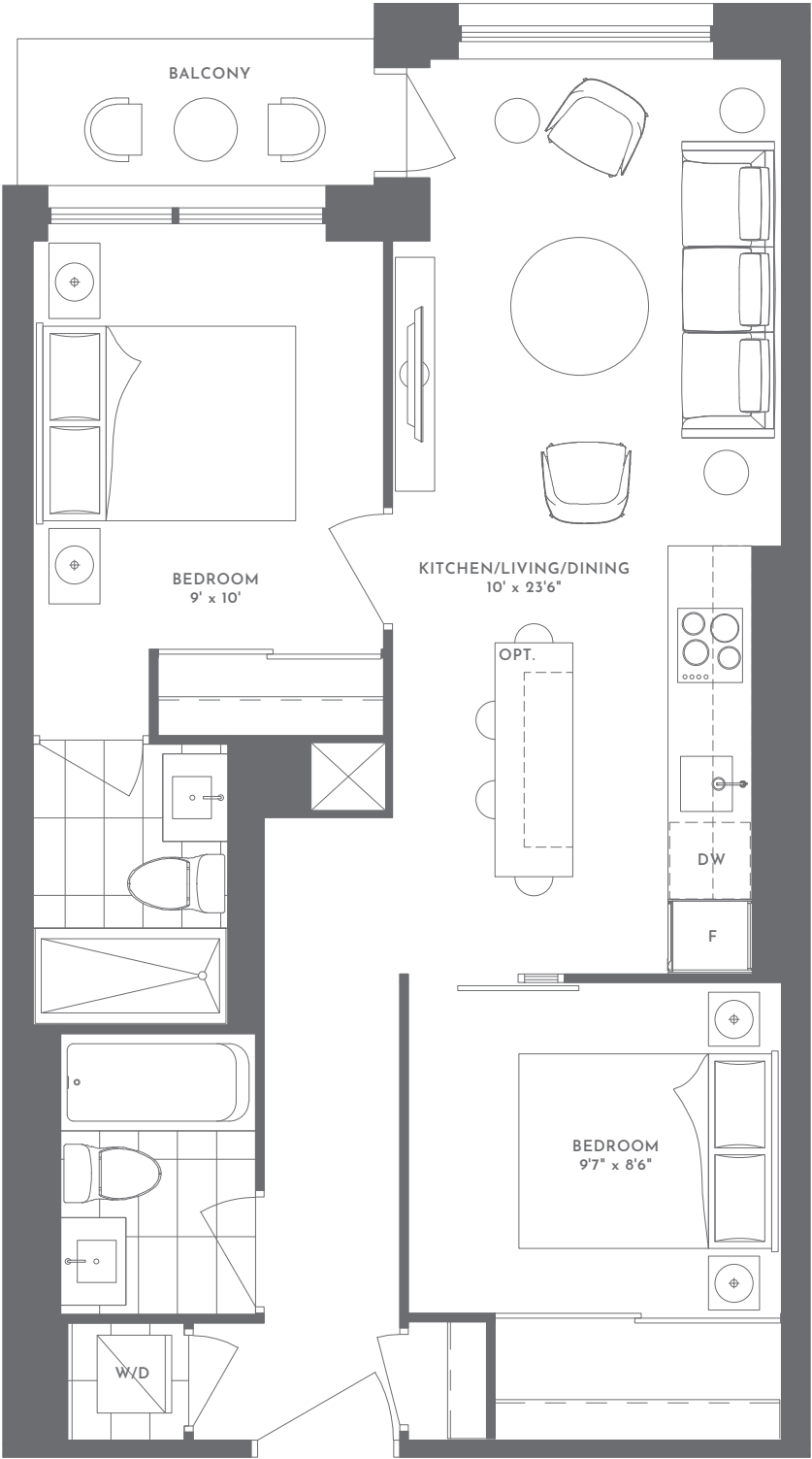
2 - A

INTERIOR S.F. 705

EXTERIOR S.F. 35*

TOTAL S.F. 740

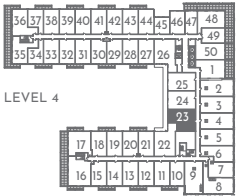
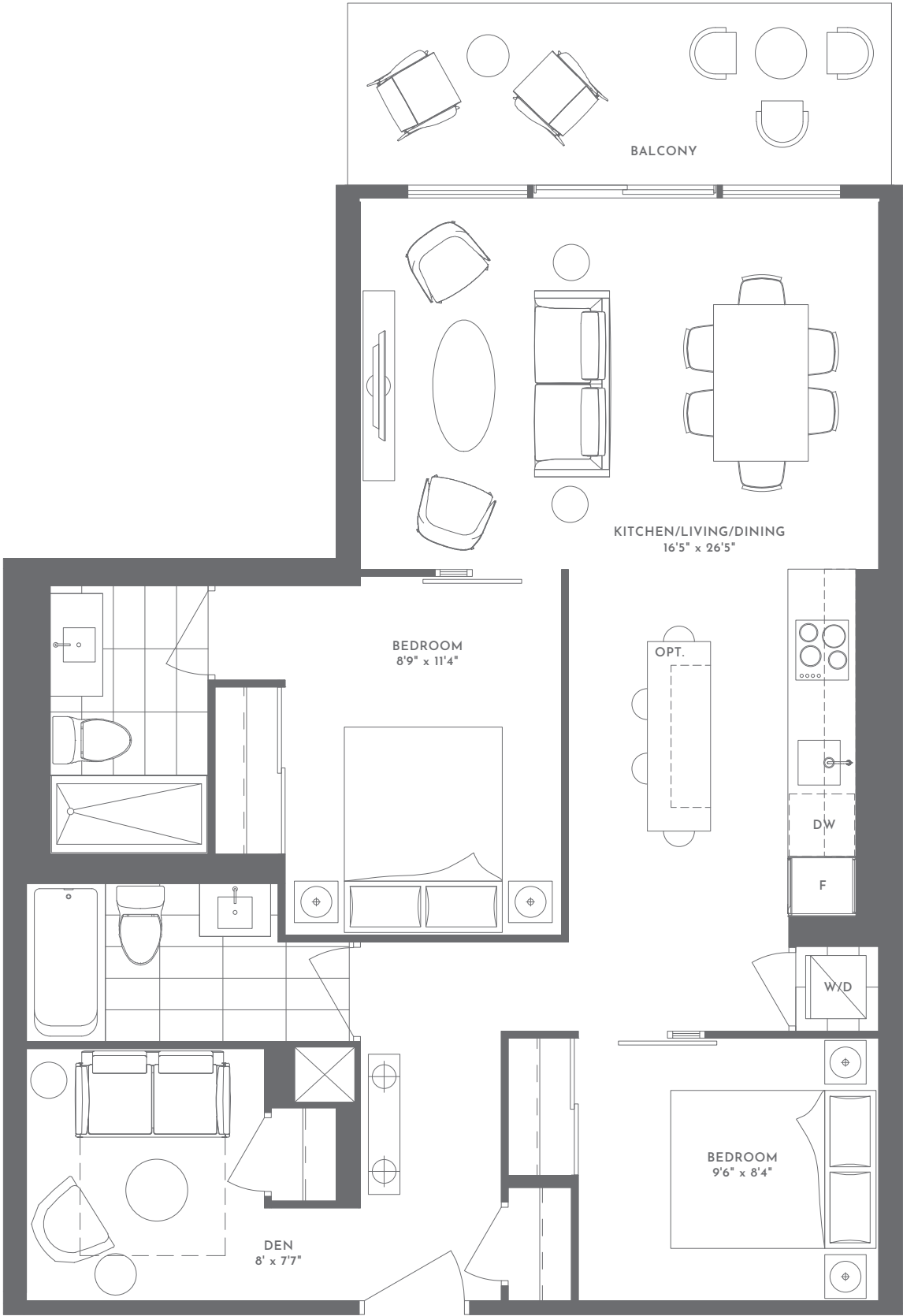
WONDER



TWO BEDROOM + DEN
2D-E

INTERIOR S.F. 880
EXTERIOR S.F. 85*
TOTAL S.F. 965

WONDER

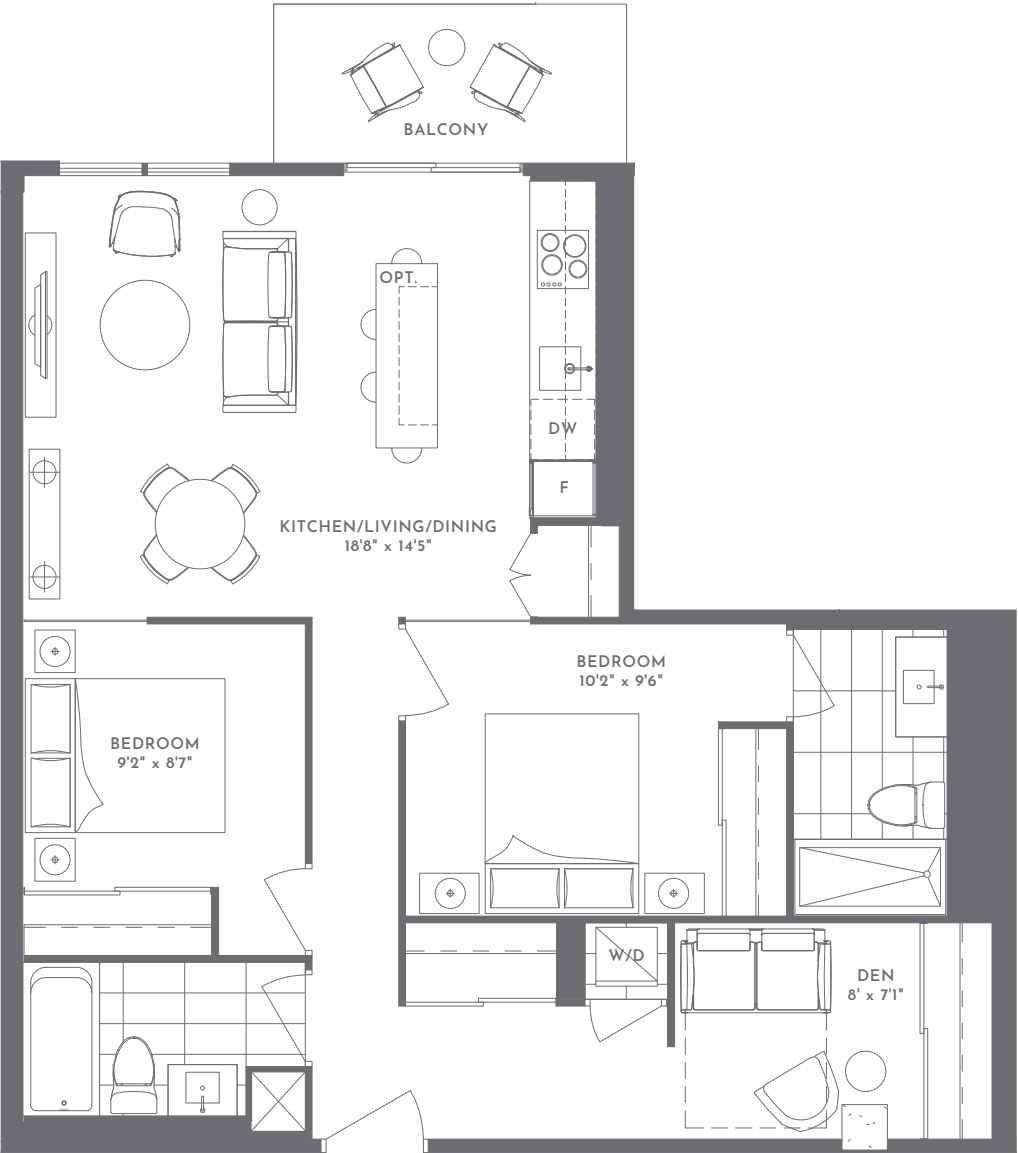


TWO BEDROOM + DEN

2D-M

INTERIOR S.F. 871
EXTERIOR S.F. 44
TOTAL S.F. 915

WONDER

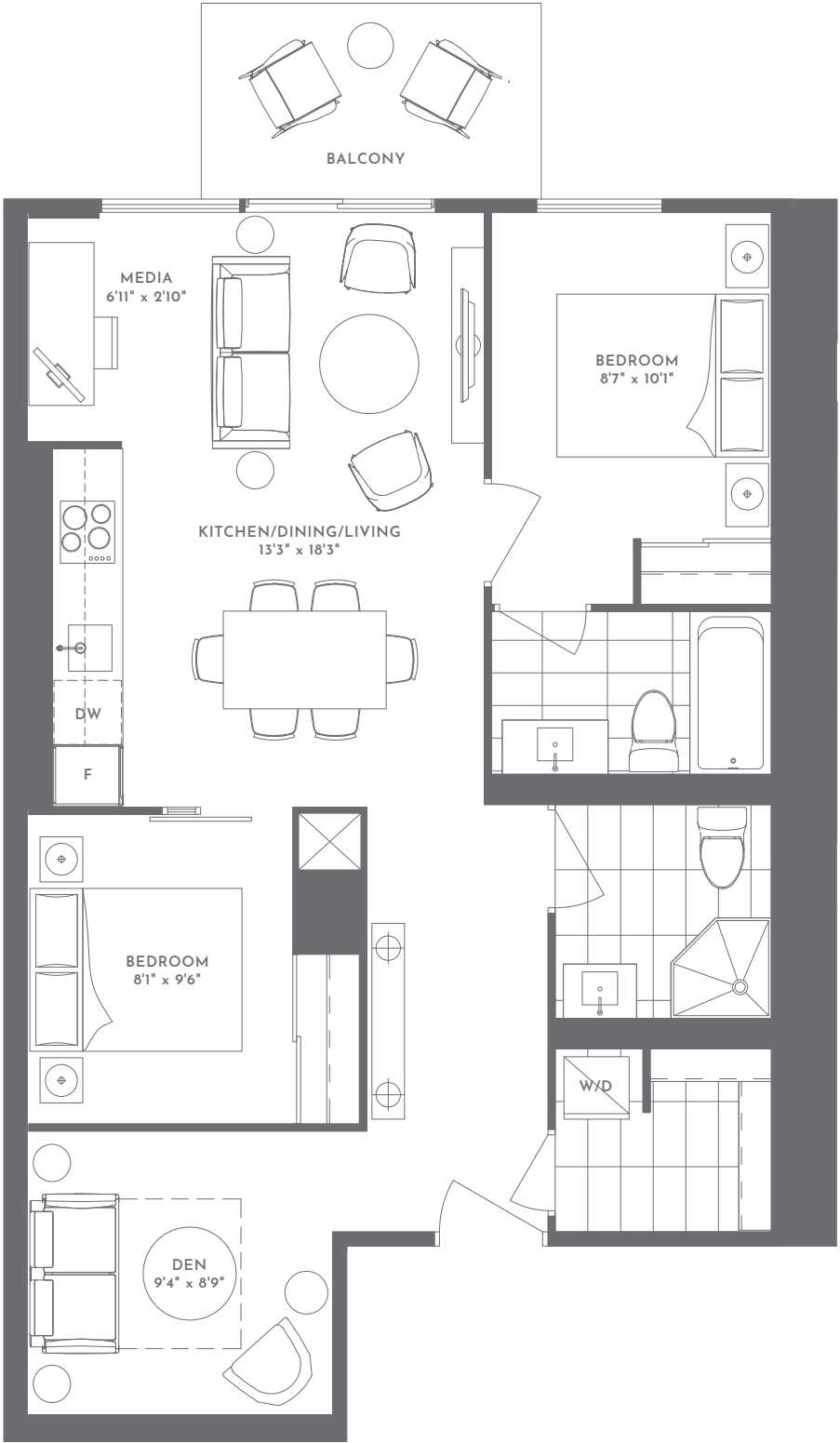


TWO BEDROOM + DEN + MEDIA

2D-D

INTERIOR S.F. 856
EXTERIOR S.F. 63*
TOTAL S.F. 919

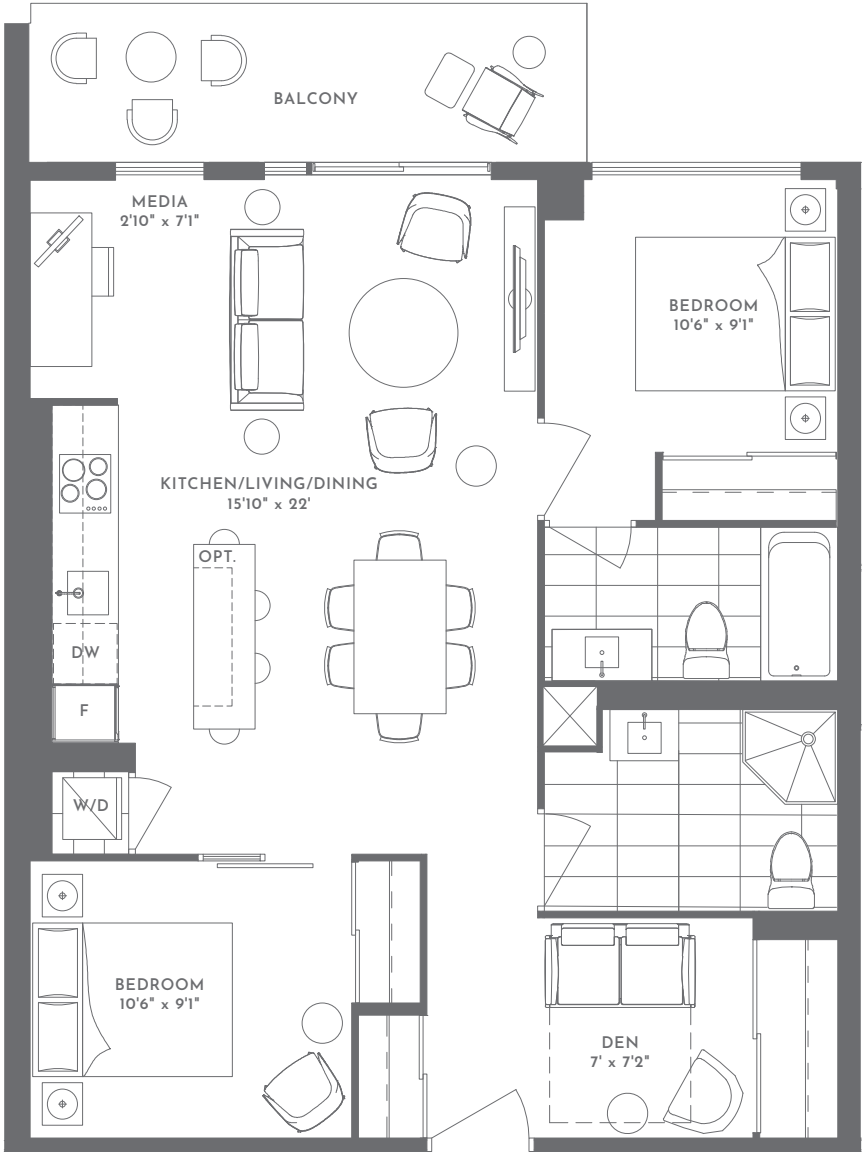
WONDER



TWO BEDROOM + DEN + MEDIA

2D-V

INTERIOR S.F. 891
EXTERIOR S.F. 91*
TOTAL S.F. 982

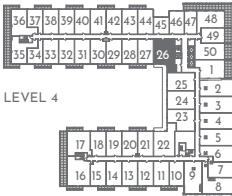
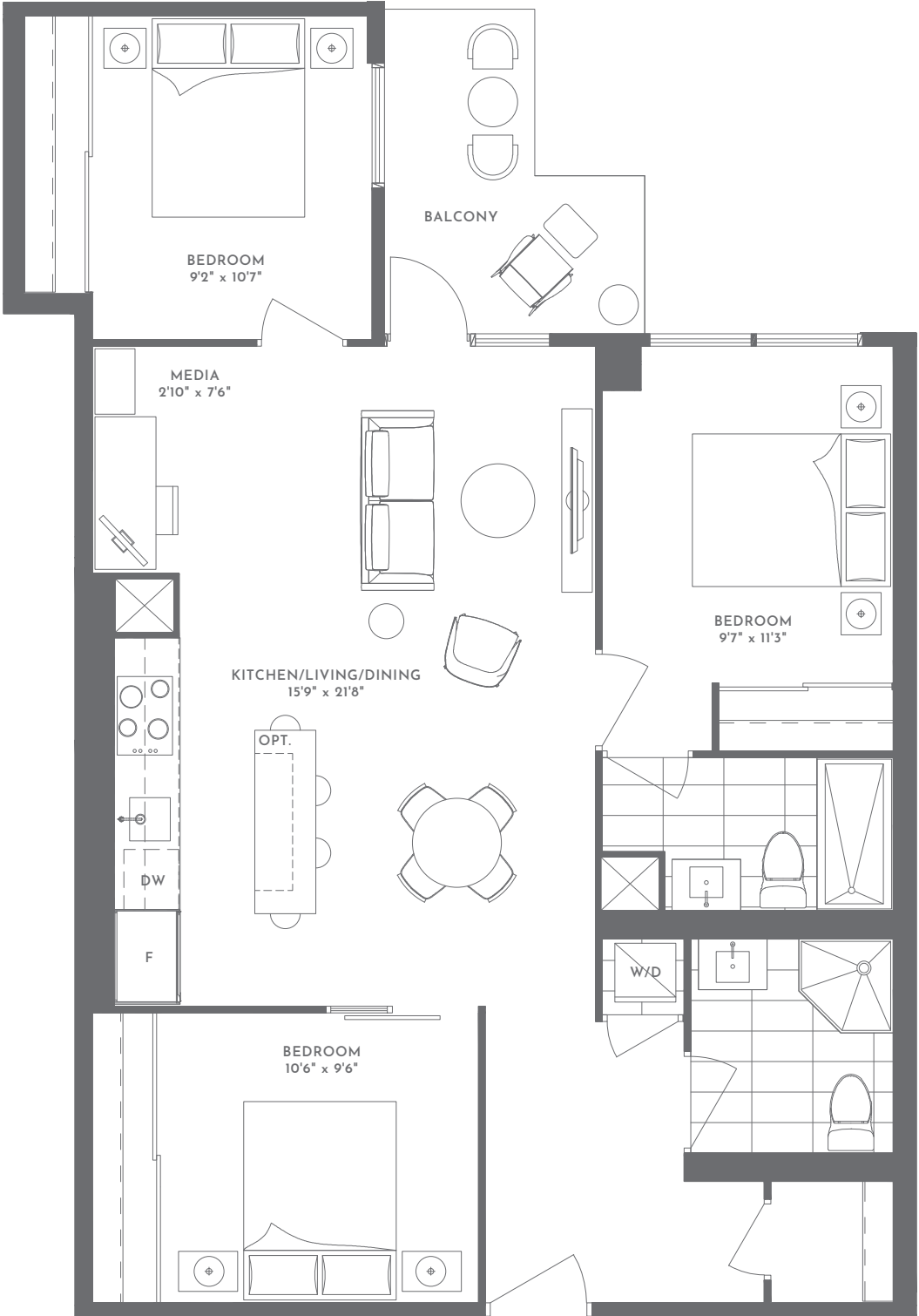


THREE BEDROOM + MEDIA

3-A

INTERIOR S.F. 1022
EXTERIOR S.F. 71*
TOTAL S.F. 1093

WONDER

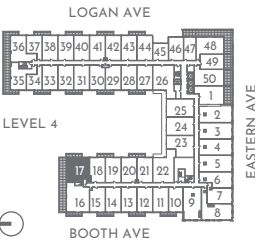


THREE BEDROOM

3-H

INTERIOR S.F. 899
EXTERIOR S.F. 420
TOTAL S.F. 1319

WONDER

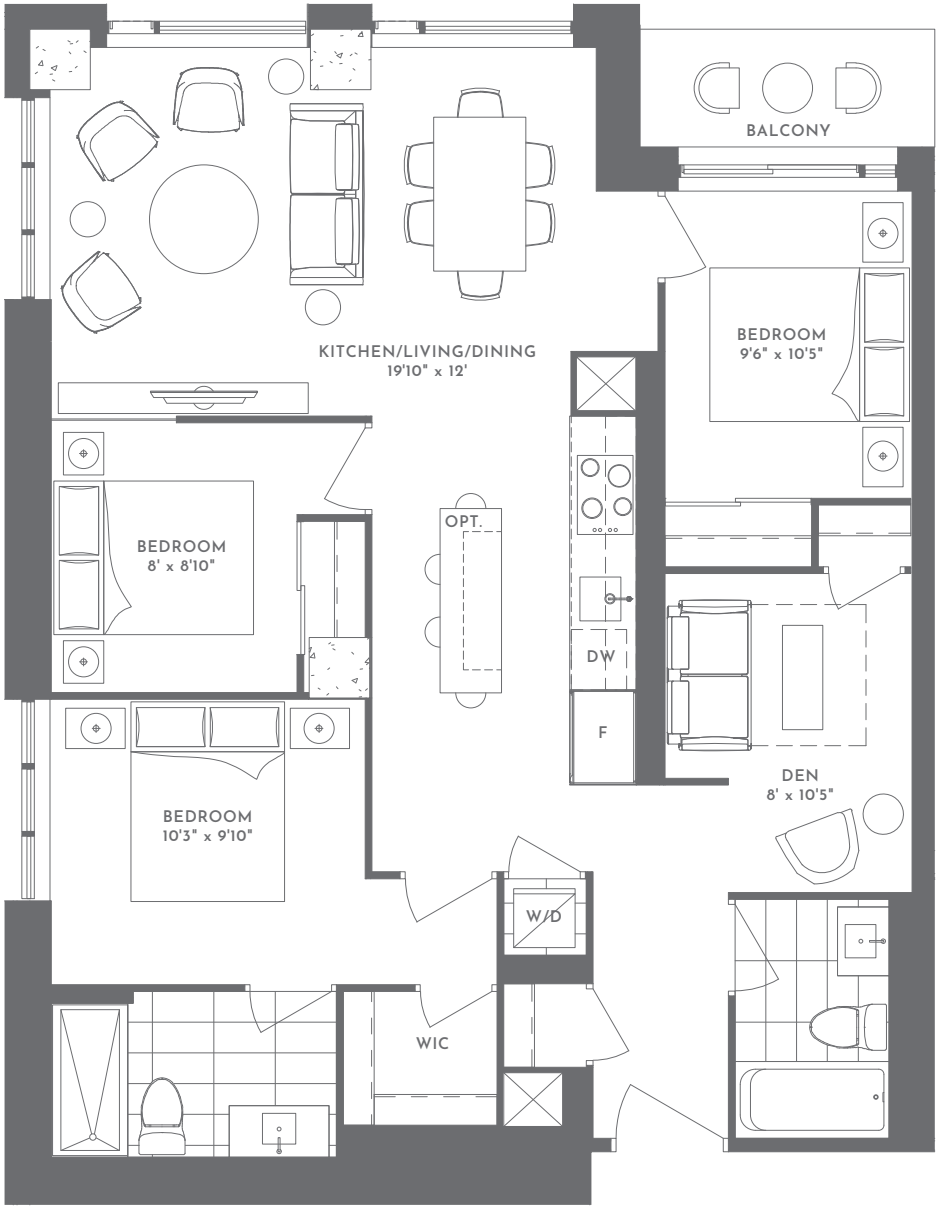


THREE BEDROOM + DEN

3 - G

INTERIOR S.F. 1102
EXTERIOR S.F. 35*
TOTAL S.F. 1137

WONDER

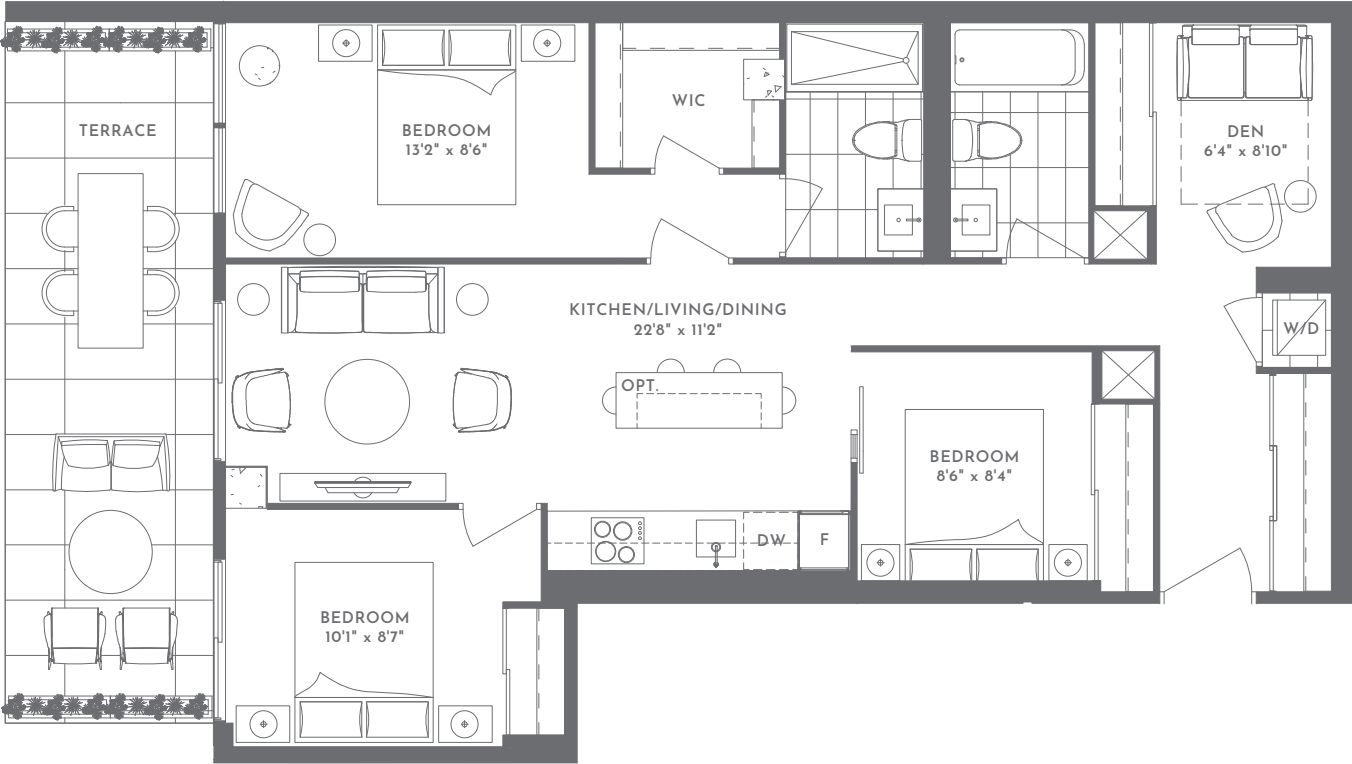


THREE BEDROOM + DEN

3 - 0

INTERIOR S.F. 946
EXTERIOR S.F. 198
TOTAL S.F. 1144

WONDER



TWO BEDROOM + DEN

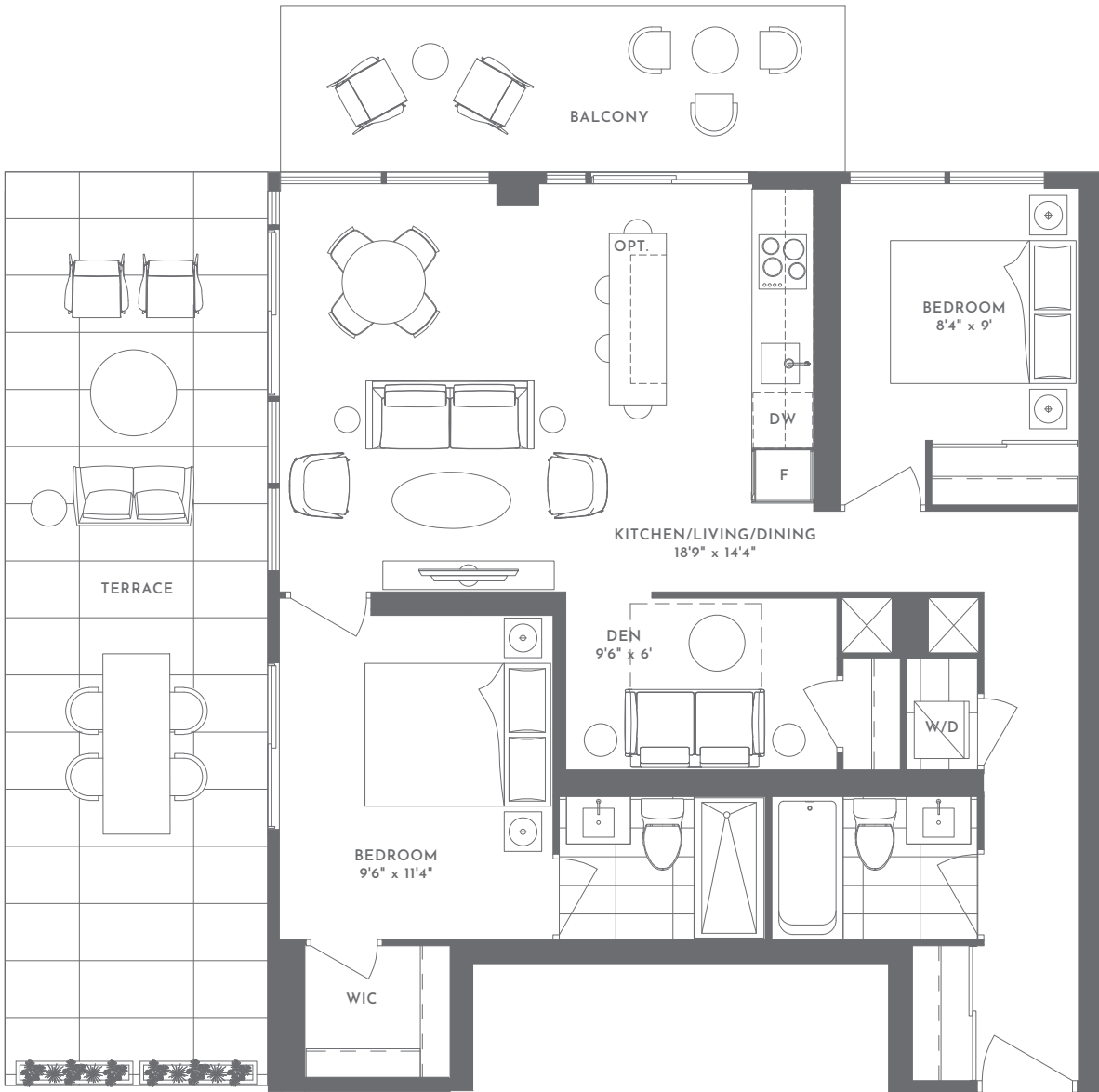
2D-P

INTERIOR S.F. 868

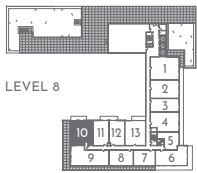
EXTERIOR S.F. 447

TOTAL S.F. 1315

WONDER



LOGAN AVE



LEVEL 8

EASTERN AVE

BOOTH AVE



GRAYWOOD

AN INTELLIGENT MOVE

Alterra

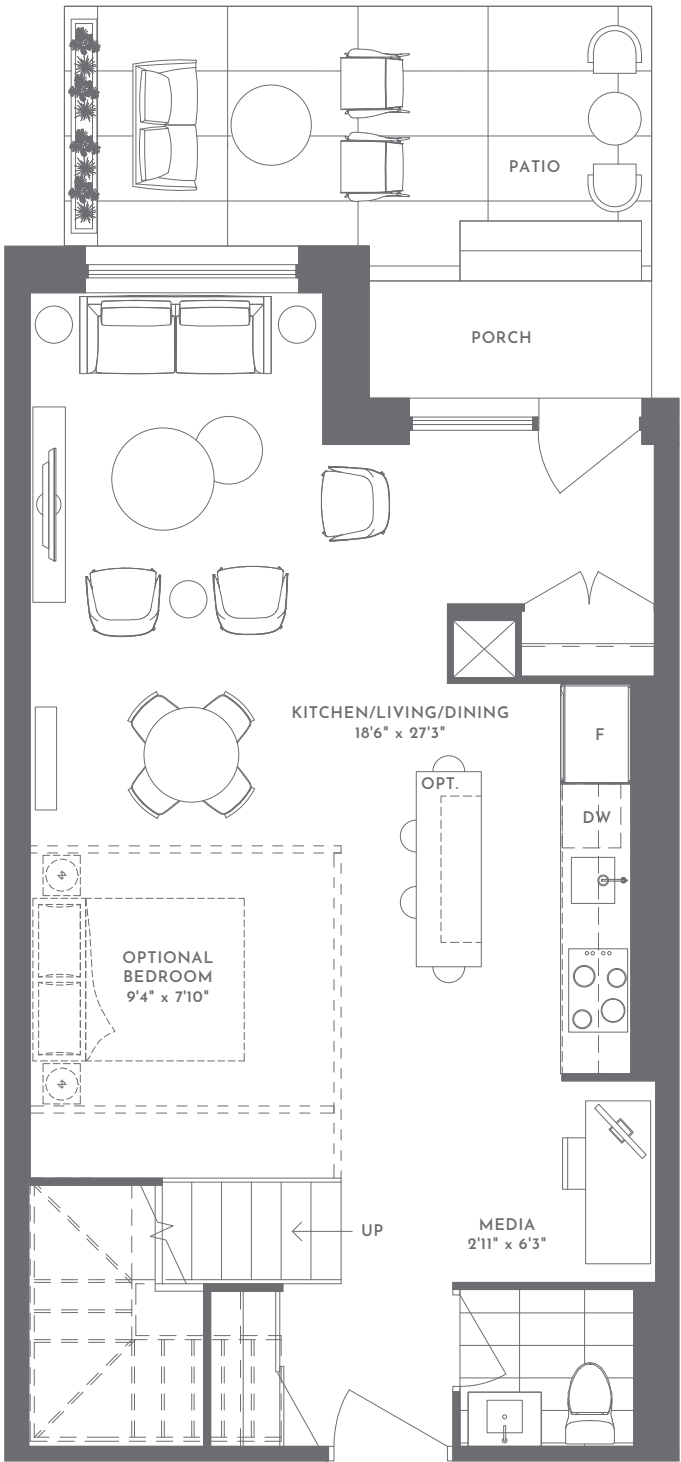
Dimensions, specifications, layouts and materials are approximate only and are subject to change without notice. Tile patterns may vary. Window size and location may vary. Actual usable floor space may vary from slated floor area. *Balcony and terrace area is approximate and may vary in size floor to floor due to architectural detail. The purchaser acknowledges that the actual unit purchased may be a reverse layout to the plan shown. See Sales Representative for full details. E. & O. E.

TWO BEDROOM + DEN + MEDIA
2DT-C

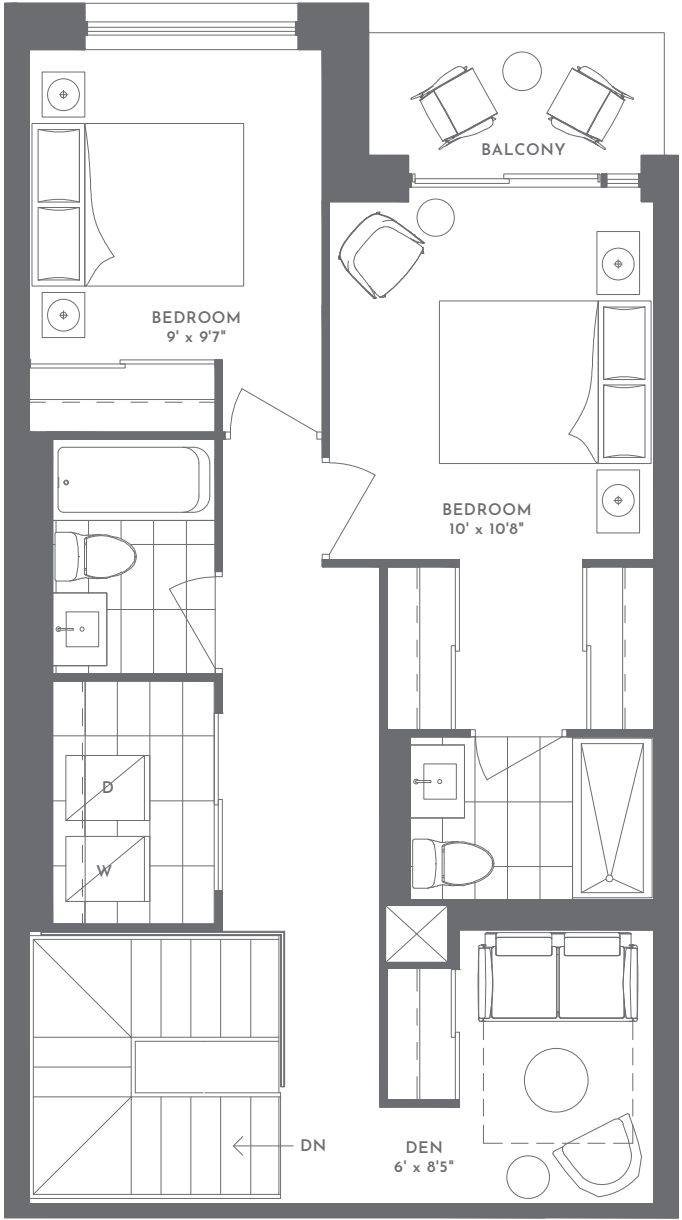
INTERIOR S.F. 1412
EXTERIOR S.F. 242*
TOTAL S.F. 1654

Optional Three Bedroom

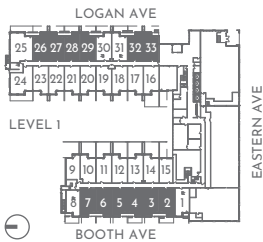
WONDER



LEVEL 1



LEVEL 2



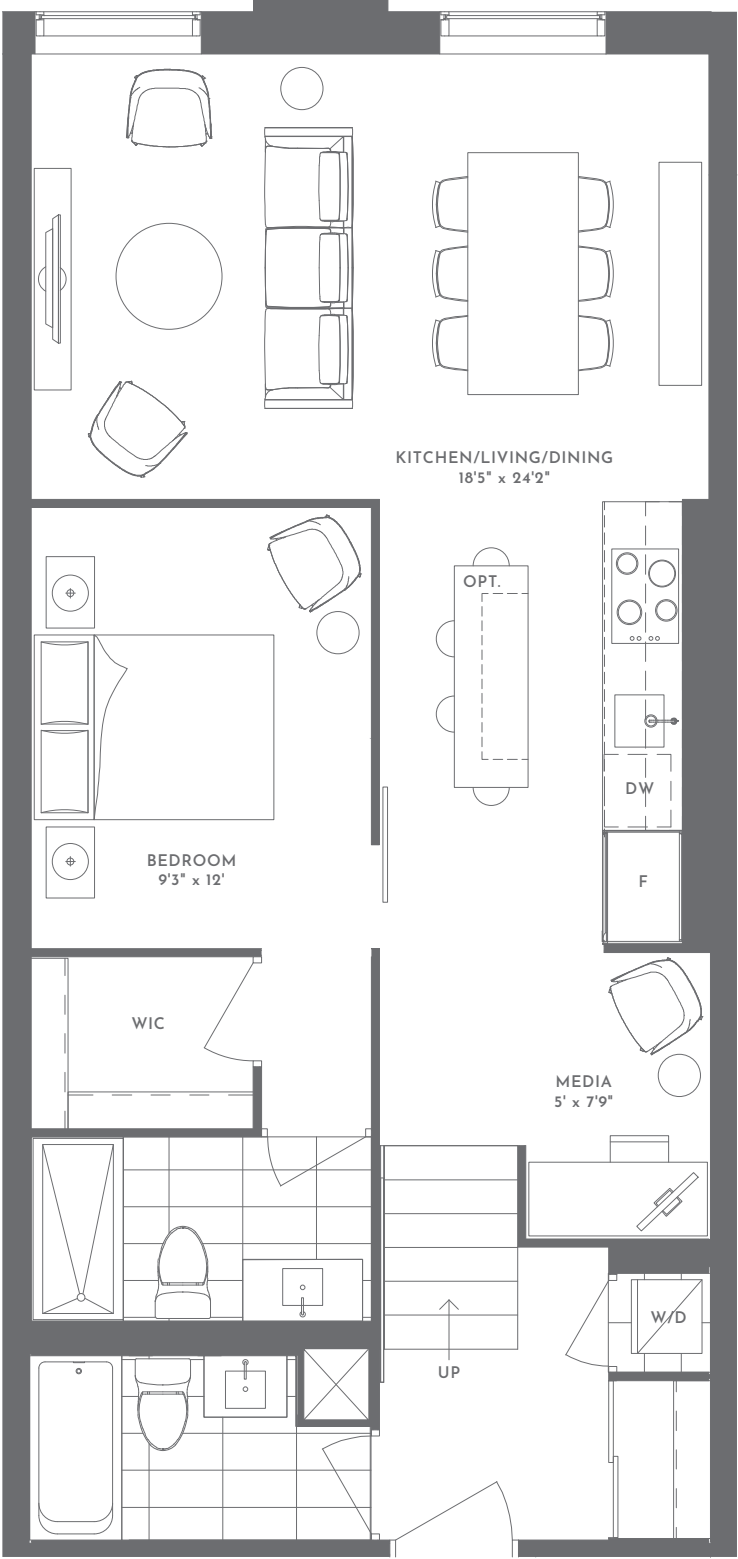
ONE BEDROOM + MEDIA

1L-B

INTERIOR S.F. 807

TOTAL S.F. 807

WONDER



TWO BEDROOM + DEN
2DL-D

INTERIOR S.F. 1014
TOTAL S.F. 1014

WONDER

