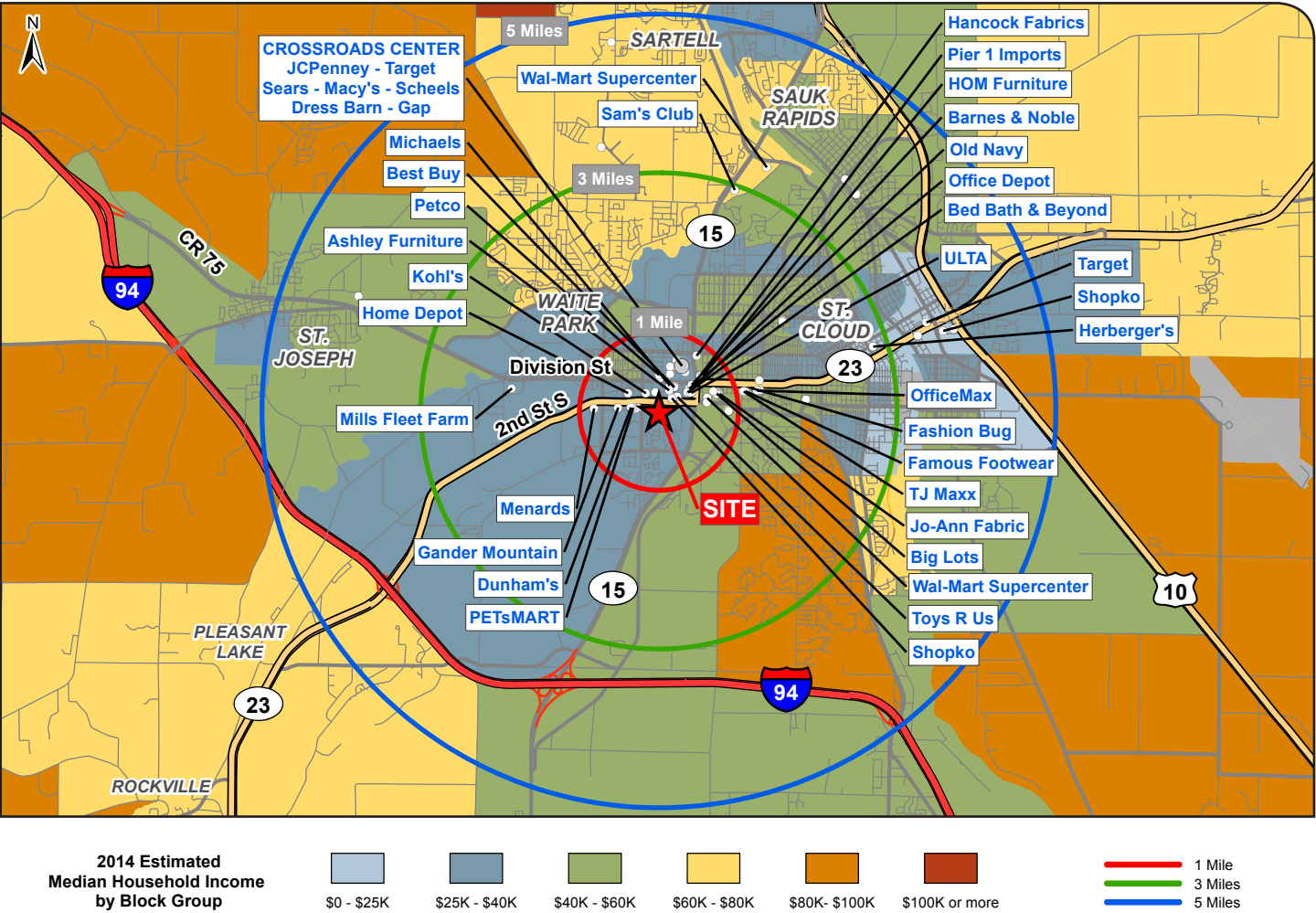


Waite Park, Minnesota



Demographics

Population	1 mile	3 miles	5 miles
2019 Projection	6,718	54,294	100,449
2014 Estimate	6,671	53,211	97,989
2010 Census	6,656	52,407	96,049

Household Income	1 mile	3 miles	5 miles
2014 Average HH Income	\$47,774	\$57,230	\$59,580
2014 Median HH Income	\$38,518	\$42,719	\$45,625

Family Households	1 mile	3 miles	5 miles
2014 Estimate	48	53	55

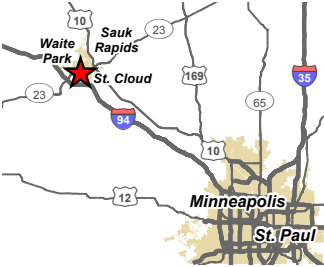
Source: ESRI - 2014

Households	1 mile	3 miles	5 miles
2019 Projection	3,158	22,668	40,149
2014 Estimate	3,119	22,140	38,939
2010 Census	3,084	21,609	37,679

Housing Units by Occupancy	1 mile	3 miles	5 miles
2014 Owner-Occupied	42	52	53
2014 Renter-Occupied	48	41	41
2014 Vacant	10	7	6

Employment	1 mile	3 miles	5 miles
2014 Total Employees (Daytime Employment)	12,291	37,568	57,212

Waite Park, Minnesota

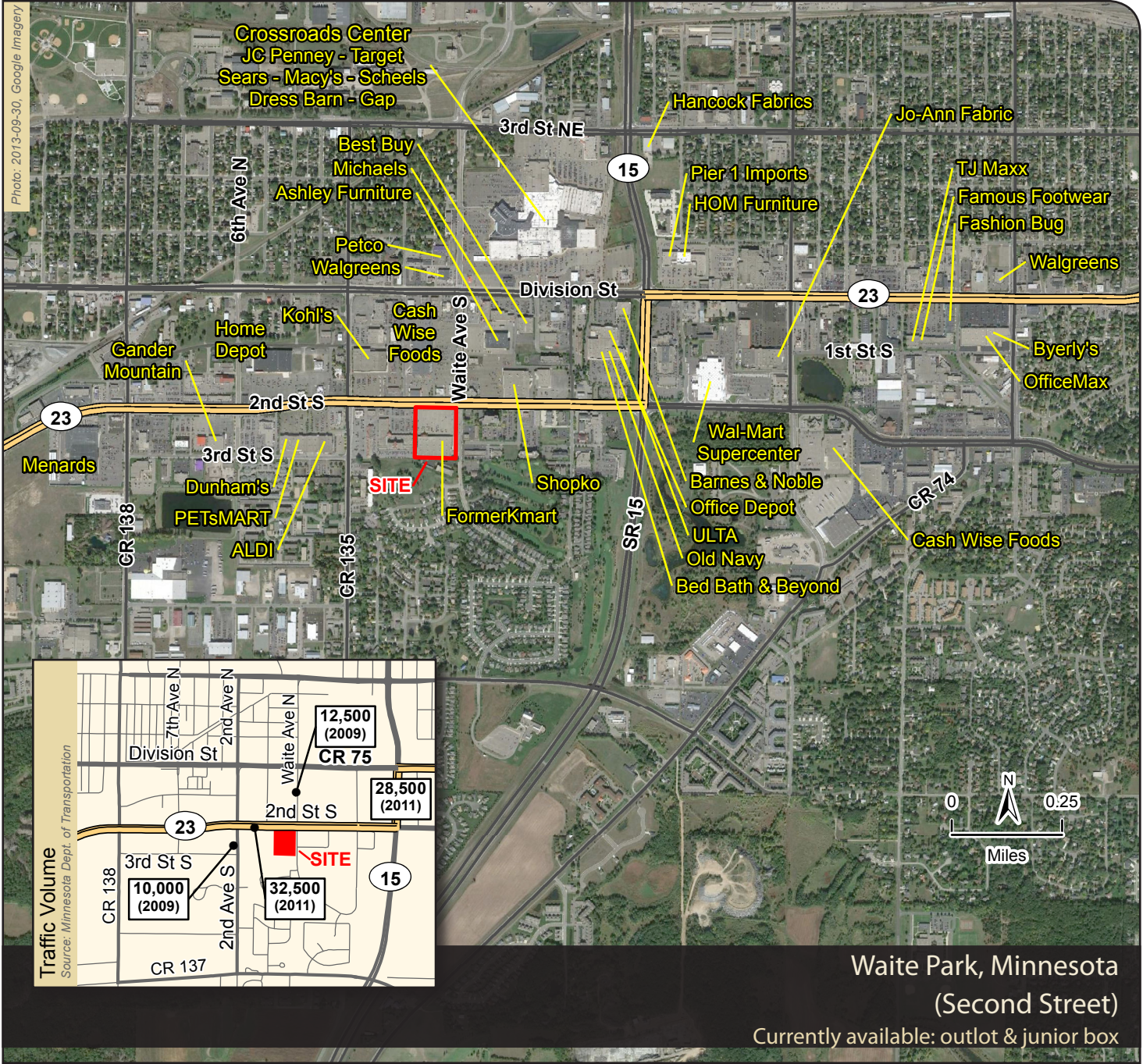


Kmart

(Second Street)

Waite Park, Minnesota

Currently available: outlot & junior box



Contact:

**Steve Wagner**  
Senior Vice President of Retail Group  
swagner@cproperties.com  
262.532.9347

**Gerry Severson**  
Vice Chairman, President of Continental Properties Retail Group  
gseverson@cproperties.com  
262.532.9342



