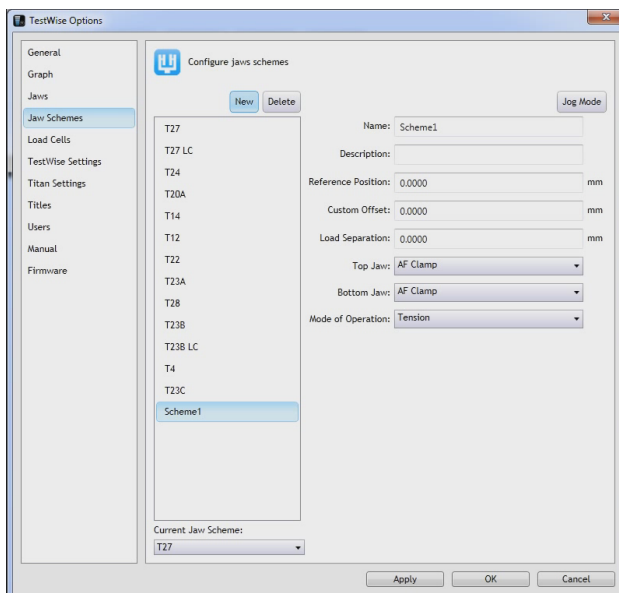
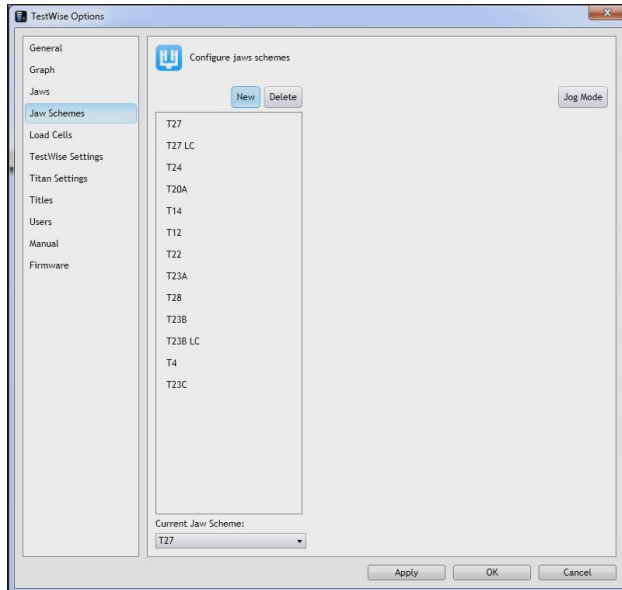


TestWise – How to Setup T18 Loop Bars

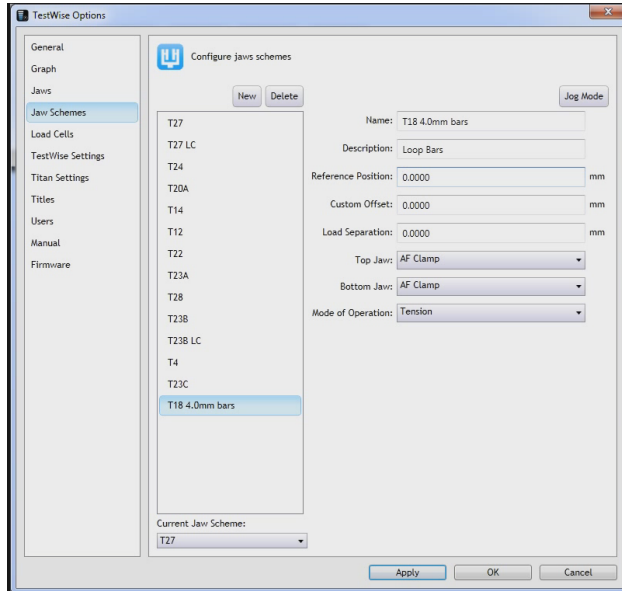
A separate Jaw Scheme is required for each size (diameter) of Loop Bar.

T18 Loop Bars are supplied complete with 4, 6.5, 8, 10 and 13 mm diameter bars.

From the File menu, select Options, then Jaw Schemes, then select New.



Type a Name and Description

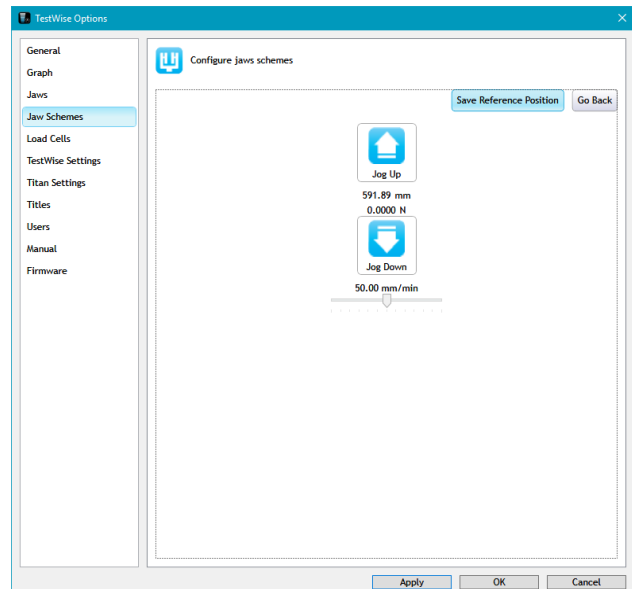
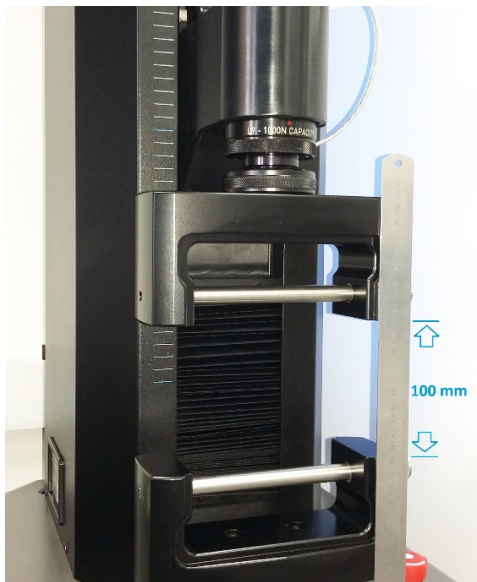


Verify and enter the Reference Position. This value is the same for all sizes of Loop Bar.

Fit the T18 Loop Bars to Titan.

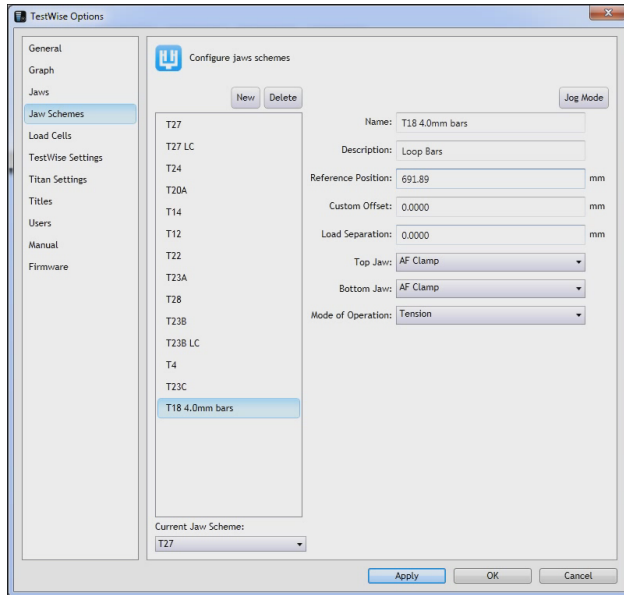
Click Jog Mode.

Use the Speed controls and the Up and Down controls to move the top T18 so that the distance between the top and the bottom bodies (not the bars) is 100 mm, as shown below.



Press Save Reference Position, then Go Back.

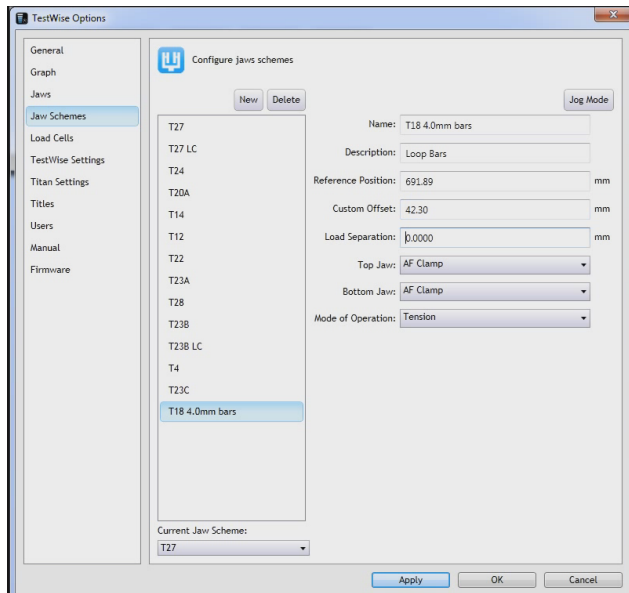
The Position value "591.89 mm" (for example only) will be transferred.
Then add 100 to "591.89" mm.



The Reference Position of "691.89 mm" (for example only) is used for all sizes of Loop Bars.

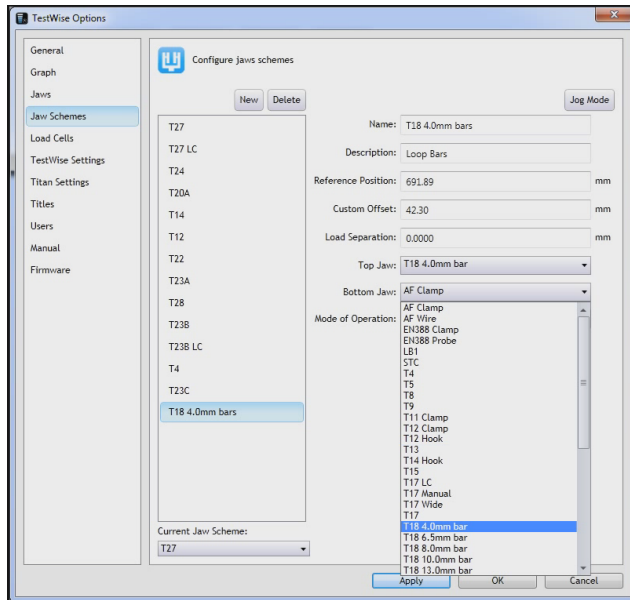
Next, enter the Custom Offset value – this value is DIFFERENT for each size of Loop Bar.

For 4.0 mm bars, Custom Offset = 42.30 mm

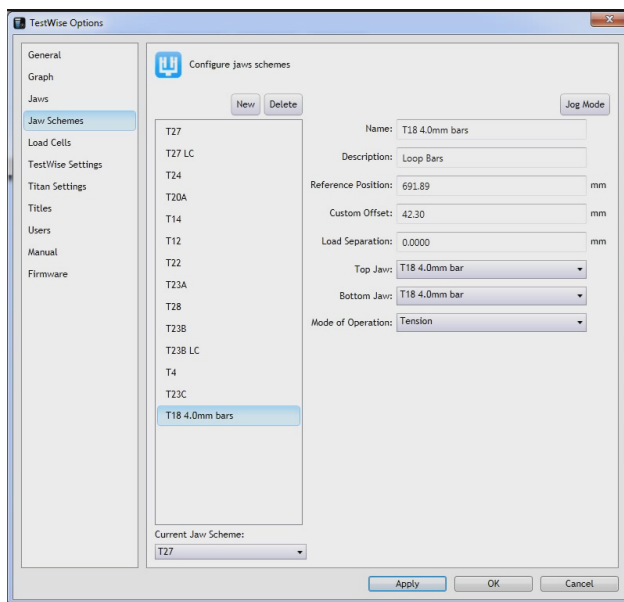


Load Separation value is always zero.

Then select the Top Jaw and Bottom Jaw which will be used in the Jaw Scheme from the drop-down list.

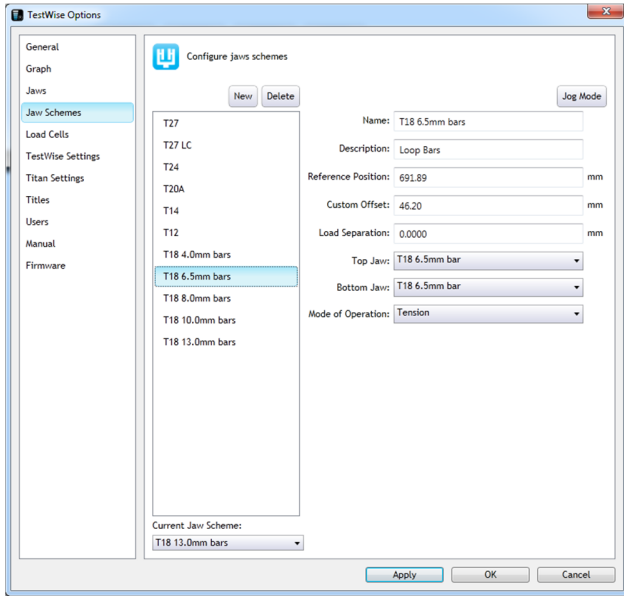


Finally, check the Mode of Operation is set to Tension.

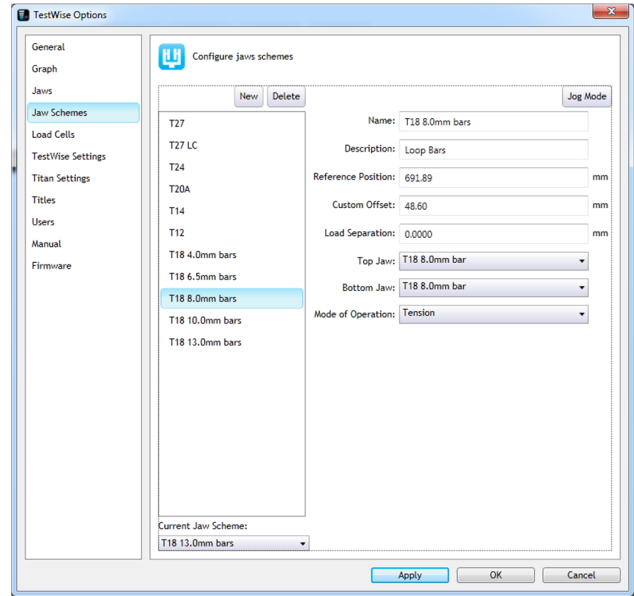


Lastly, click Apply followed by OK.

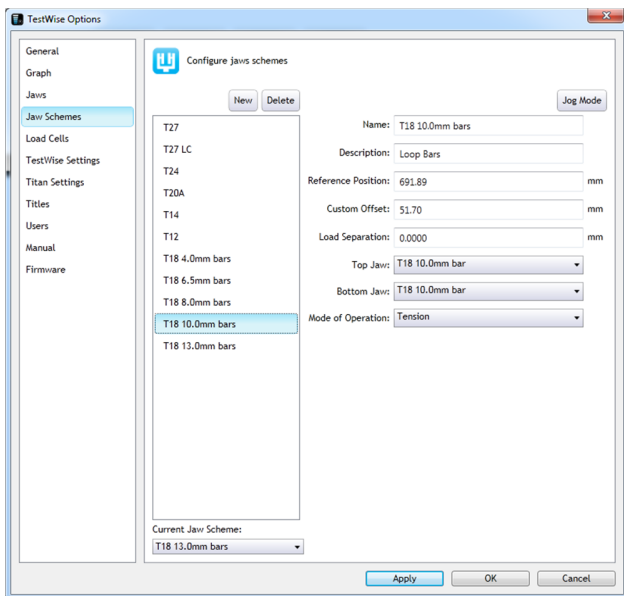
For the remaining bar sizes to be setup, it is not necessary to setup the Reference Position again. However, the Custom Offset value, Top Jaw and Bottom Jaw must be set individually for each size of bar. You can see the required Custom Offset values in the images below.



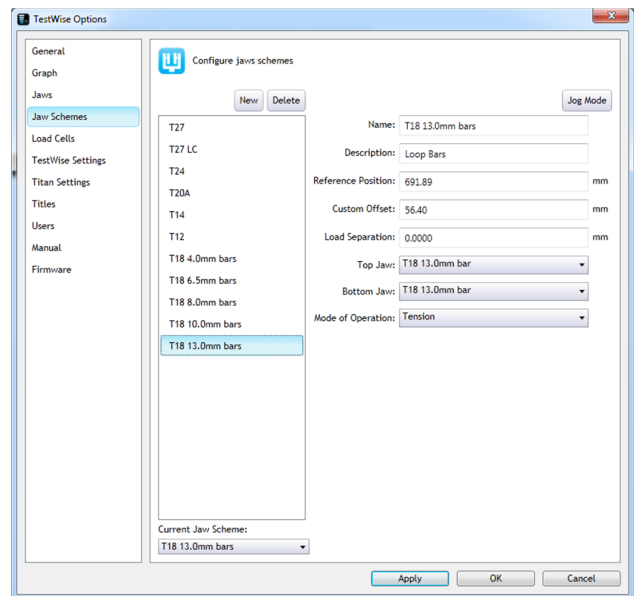
For 6.5 mm bars, Custom Offset = 46.20 mm



For 8.0 mm bars, Custom Offset = 48.60 mm



For 10.0 mm bars, Custom Offset = 51.70 mm



For 13.0 mm bars, Custom Offset = 56.40 mm

(ENDS)