



DELTA | GROUP

EMPOWERING IMAGINATION

RETURNING TO THE OFFICE OR CALL CENTRE...

PROTECTION AND SOCIAL DISTANCING IDEAS TO SUPPORT A
SAFER RETURN TO YOUR OFFICE ENVIRONMENT

Businesses and offices are starting to gear up for their teams returning again to work.

Office managers are looking to put in place prudent and innovative safety measures.

Your plans for bringing people back into the workplace may need safety screens, new traffic flow guidance and digital signage. Delta is offering 'Advisory Signage' and Personal Protective Equipment with suggestions and ideas for workplace traffic management, social distancing and responsible purchasing.

Being seen to take action will help alleviate fears, install confidence and prevent transmission.

Branding – We can also provide a creative artworking solution to brand all of the ideas aligned to your brand guidelines.

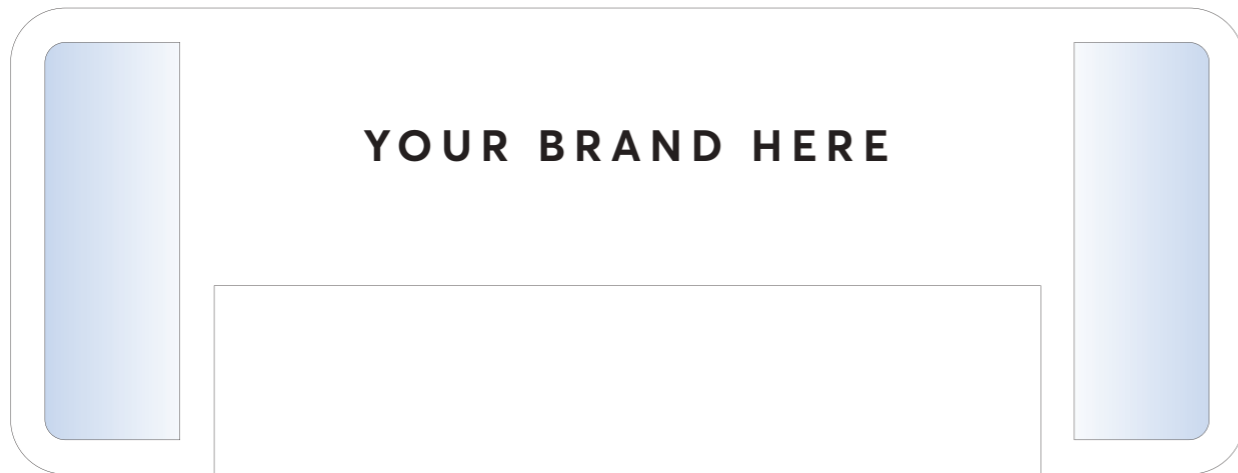
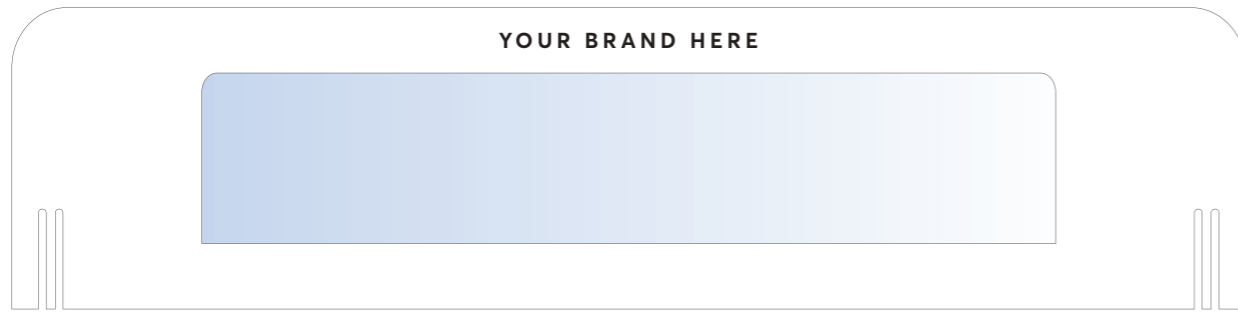
Delta is here to help. Please email hello@theDeltaGroup.co.uk for more information.



SPACE SEPARATORS

Desk Dividers

Interlocking desk dividers with acetate windows.



Contact: hello@thedeltagroup.co.uk



Contact: hello@thedeltagroup.co.uk

Desk Dividers

Robust units that can be provided individually or adapted to various desk setups.

Can be branded to client's needs.



Workplace Enclosure

with side and tabletop mounted clips

Table top mounted clip



Side mounted clip



Contact: hello@thedeltagroup.co.uk

Light-weight Screen and Desk Dividers



Contact: hello@thedeltagroup.co.uk

Bar Counter Sneeze Protection

660x900mm
with metal clamps,
no screw/foamtape required



Contact: hello@thedeltagroup.co.uk

Type 1 Table Top Divider

660x1500mm
with metal clamps,
no screw/foamtape required



Contact: hello@thedeltagroup.co.uk

Type 2 Table Top Divider

660x1500mm
with acrylic legs,
no screw/foamtape required



Contact: hello@thedeltagroup.co.uk

Type 3 Table Top Divider

660x1000mm
with metal clamps,
no screw/foamtape required



Contact: hello@thedeltagroup.co.uk

Type 4 Table Top Divider

660x1000mm
with acrylic legs,
no screw/foamtape required



Contact: hello@thedeltagroup.co.uk

Space Protector

FOR OFFICES, MEETING ROOMS & CANTEENS



- No installation required
- Easy to lift
- Rigid & strong
- Made from recycled pulp board
- Board fully recyclable
- Bespoke sizes available



All artwork / products shown are for visual purposes only. Final production may differ.

Screen sash

To be used on receptionist computers or in hot desk areas.



Contact: hello@thedeltagroup.co.uk

On-Desk Messaging

A suite of on-desk messaging to encourage social distancing in the workplace.

Toblerone Landscape



A4 Acrylic Holder



A4 Cube



Toblerone Portrait

Contact: hello@thedeltagroup.co.uk We have a wider range of products here: [Protective Equipment](#)

Canteen Screens / Protection

We produce bespoke protective screens for entrances, food areas and counter areas as well signage and customer traffic-flow solutions such as belt barriers and free-standing screen dividers.



Contact:
hello@thedeltagroup.co.uk

Counter Screen

Clear, modular, perspex screens that can be securely situated on counter tops via adhesive pads on feet.

These can be built to various size requirements (pictured are 750mm x 600mm).

Ideal for tills, desks or reception areas to separate people, support social distancing and provide protection against COVID-19.

Key features:

- High-impact strength & lightweight
- Easy to assemble/position (delivered flat)
- Optically clear for maximum visibility
- Can be cleaned & reused



White images to illustrate the product style – the end product is made with clear material as below



Hanging Counter Screen

A clear, modular screen that hangs from the ceiling and can be made to suit various sized checkouts.



Contact: hello@thedeltagroup.co.uk

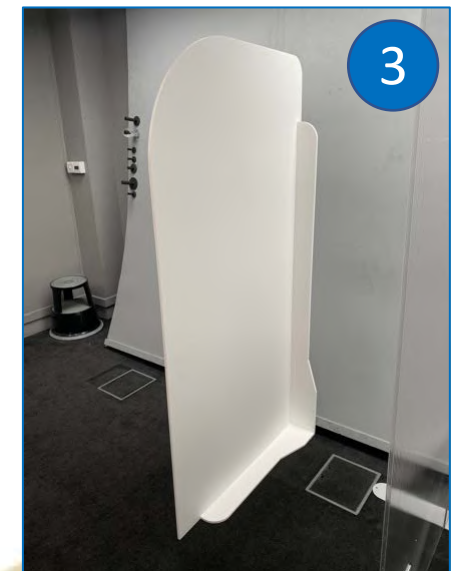
Screen Dividers

Multi-purpose freestanding dividers.

To separate queues at tills or to support social distancing, keeping people protected in other environments.

Sizes can be bespoke (these are 1m x 2m).

- 1 Metal feet with wood-print-effect on foamex
- 2 Metal feet with clear polycarbonate material
- 3 White smartex material throughout



Meeting Room Guidance Communication

Signage to appear outside meeting rooms to advise the restriction on number of people allowed inside to adhere to social distancing measures.



Blank Graphic



Example



The numbers will be magnetic to provide for flexibility within the environment.

SEAT COVERS

Seat covers for cinemas and other public places effectively making seat 'not for use' and therefore encouraging social distancing.



Contact: hello@thedeltagroup.co.uk

Seat covers attach across the back, enabling fit to a wide variety of seating.

Protective Pod

An 'L' shaped protective pod with clear acrylic window to help shield employees work stations, seating or other areas.



Contact: hello@thedeltagroup.co.uk

Belt Barrier

Practical barrier with retractable belt, perfect for employee queueing areas.

Note: two barriers are needed to start a set - belt extends to 2.5m width.

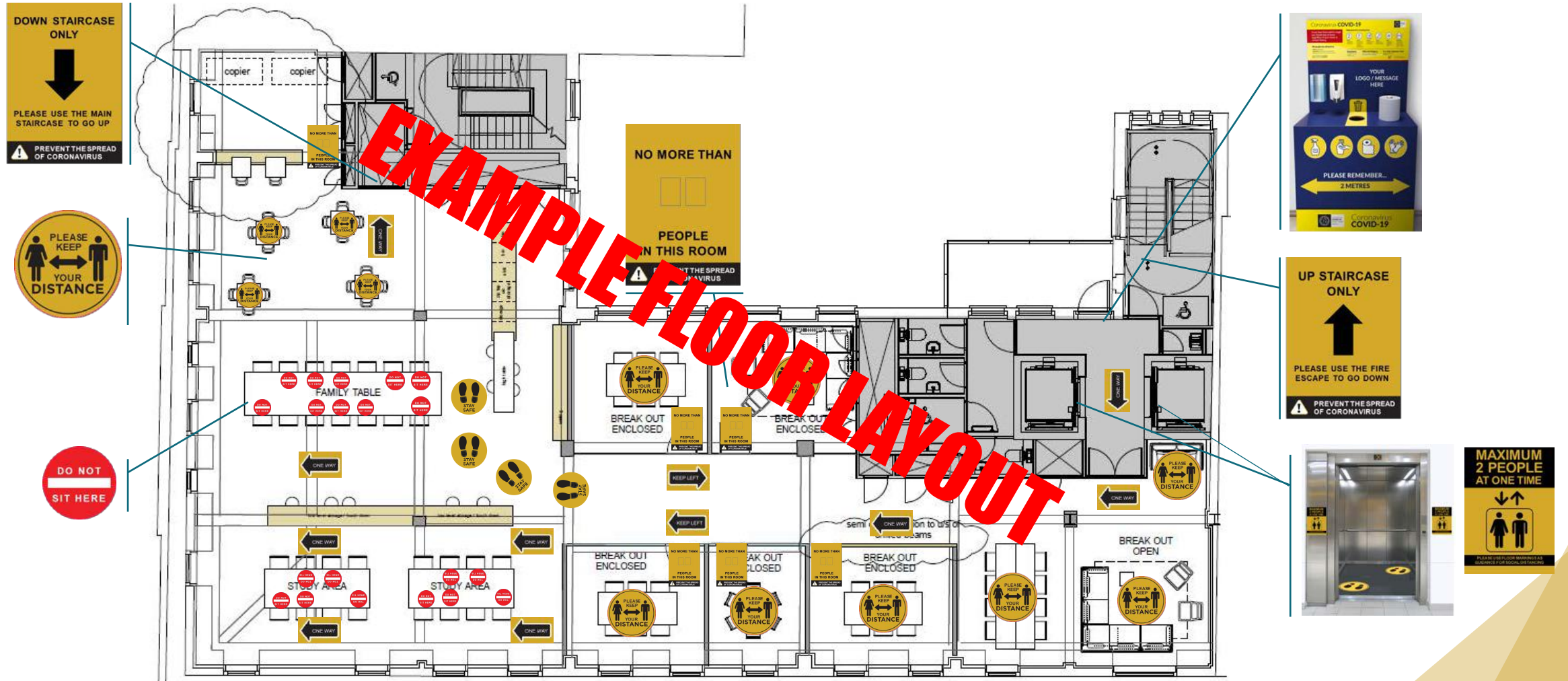


Contact: hello@thedeltagroup.co.uk



SIGNAGE

Example of a full floor plan to help plan requirements



Circular Floor Stickers

300mm diameter floor stickers for various communications.

(Can be made to any size or shape).



FC01



FC02



FC03



FC04



FC05



FC06



FC07



FC08



FC09



FC10



FC11



FC12



FC13



FC14



FC15

Elevator Signage

Signage to appear outside elevators and social distancing markers to appear inside.

ES01



ES02



Contact: hello@thedeltagroup.co.uk

Staircase Stickers

Strip vinyls to be placed in stair wells to inform of social distancing.

SC01



SC02



SC03



SC04



Contact: hello@thedeltagroup.co.uk

Roller Banner

Update-able banners to carry important customer information.

Light weight and moveable with an easily cleaned base.

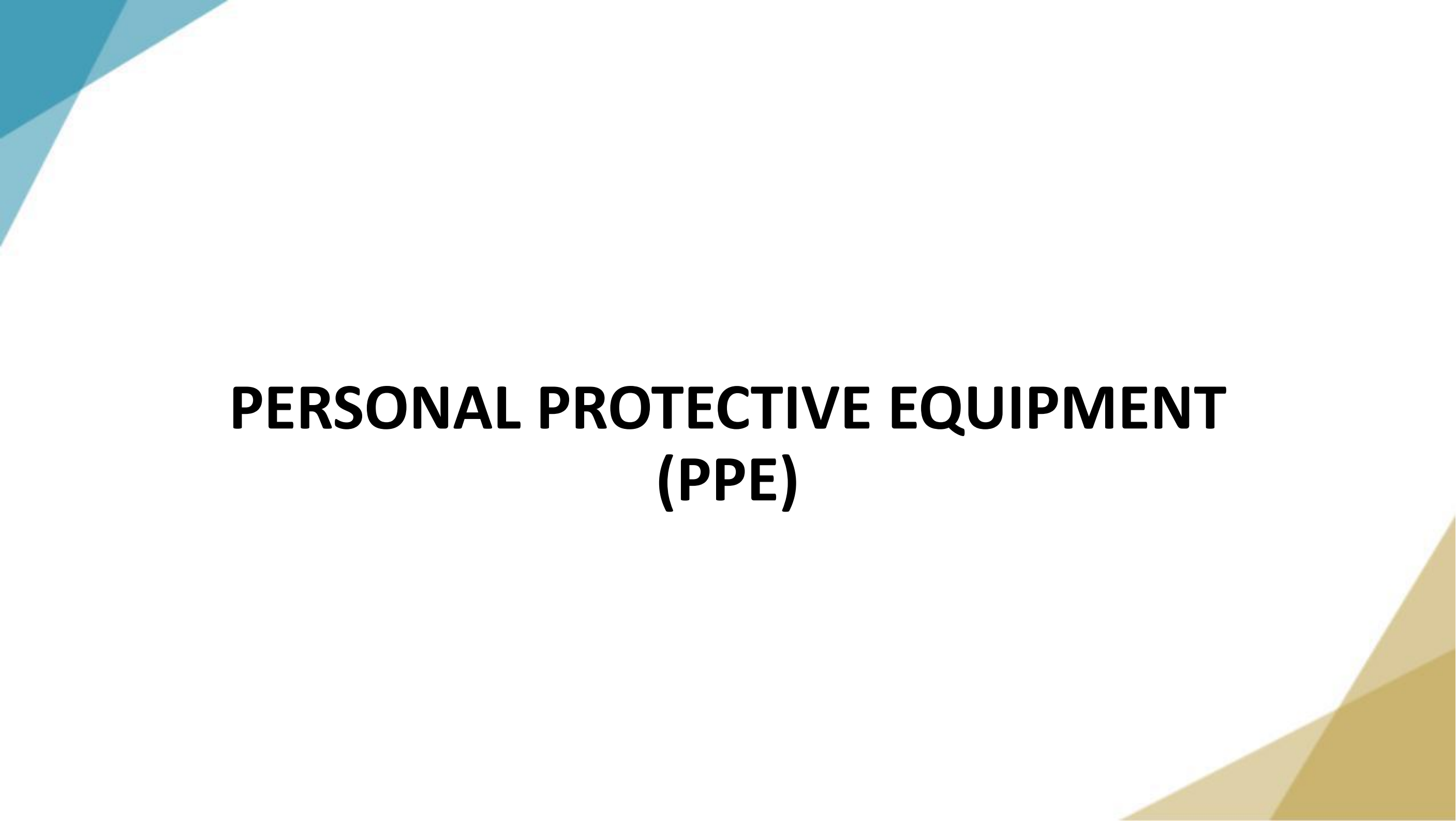
Contact: hello@thedeltagroup.co.uk



Digital Screens and Messaging

- Flexible messaging tailored to your needs
- Easily updateable with real-time changes
- Comms and reminders on social distancing, handwashing, workplace protocols
- On brand graphics, video, animation
- Our creative studio can produce artwork and design outputs





PERSONAL PROTECTIVE EQUIPMENT (PPE)

Style: TDG04, Face Shield

Lightweight face shield, constructed of PVC, adjustable 20mm knitted elastic headband and a soft polyether AS702 white foam head support for long-term comfort.

Designed as a barrier against coughs and sneezes + to stop the wearer from touching their face and eyes.

Factory accredited: ISO9001 / ISO14001 / OHSAS18001

Key features:

- High-impact strength & lightweight
- Easy to assemble/position
- Fully-adjustable to cater for different head sizes
- Can be worn over eyewear and face masks
- Optically clear for maximum visibility
- Can be cleaned & reused

For thorough cleaning, use non-abrasive detergent such as washing up liquid.

The best way to achieve affective cleaning without streaks is to use a microfiber cloth that is simply dampened with water.

Abrasive or strongly alkaline detergents, solvents, leaded benzene and carbon tetrachloride should not be used



Technical specification sheets available on request

Reusable Face Mask

Antibacterial protective mask with DUPONT SILVADUR Technology.

Products can be branded with messaging or company logo.

Available in approx. 2 weeks from order.

Key features:

- Breathable
- Ultra-soft cotton
- Fully-adjustable to cater for different head sizes
- Dust-proof
- Can be washed & reused



**AAA LEVEL STANDARD
DOUBLE PROTECTION**

Dupont SILVADUR - NanoSilver fabric for protection from pollution, dust, pollen, smog, germs, and bacteria.

ODOR CONTROL
Smart fresh antibacterial technology can provide fresh feeling all day.

EAR LOOP
High resilience (elastic) adjustable ear loop.

ANTIBACTERIAL & ANTIVIRAL
After 50 times of frequent washing, the antibacterial rate is still >99%, in line with national "FZ/T73023 antibacterial knitwear" AAA security standard.

SMART ANTIBACTERIAL FABRIC
Had entered the International Environmental Textile Association, Registered in the US Environmental Protection Agency (US EPA). Passed the Biocidal Products Regulations (BPR) safety certification.

WASHABLE · REUSABLE · BREATHABLE



Technical specification sheets available on request

TDM-PPE-120 - 3 Ply Face Mask

- This is a **non-medical Grade public/civilian 3 Ply Face Mask** made to EN149:2001+A1:2009.
- Made of PP non woven fabric. Latex free. The molding and affinity layers are spunbonded non woven fabric.
- The filter layer is melt blown non woven fabric. Light and very low resistance to breathing with an anti wrinkle design.
- Protection level rating A which is the lowest level of protection for low risk situations where there is low risk to fluid, spray or aerosol exposure.
- Flat ear loop with medium strength to all comfort during extended wear.
- Mask Size 18cms x 9.5cms.
- Packed in multiples of 50 masks.



Technical specification sheets available on request

TDM-PPE-122 - 3 Ply Surgical Face Mask Type IIR.

- This is a **medical grade CE approved** 3 Ply Face Surgical fluid and splash resistant mask made to BS14683:2019.
- BFE rating $\geq 98\%$ providing excellent bacterial filtration. Splash resistance $>120\text{mmHG}$ Made of PP non woven fabric. Latex free. The molding and affinity layers are spunbonded non woven fabric.
- The filter layer is melt blown non woven fabric.
- Protection level level 2 which provides protection for fluid, splash or spray and recommended in Healthcare environments or where there is a confirmed or high risk of infection from airborne particles.
- Flat ear loop with medium strength to all comfort during extended wear.
- Mask Size 17.5cms x 9.5cms.
- Packed in multiples of 50 masks.



Technical specification sheets available on request

TDM-PPE-190 - KN95 Multilayer Protection Mask

- This is a **medical grade CE & FDA approved** Multilayer Protection Mask with particle filtration efficiency BFE \geq 95%.
- Made to EN149:2001+A1:2009, GB2626-2006KN95 and FFP2 NRD standards. A 3 layer mask, External and internal layers are made of spunbond polypropylene, the filter layer is made of meltbond polypropylene. Ultrasonically welded for strength. An integral nose clip providing a reliable tight fit.
- The metal nose clip is not exposed. Comfortable ear loops allow the mask to easily and quickly be applied and removed.
- Antivirus, antidroplet, antipollution, antibacterial. Latexfree.
- Mask Size 17.5cms x 9.5cms.
- Packed in multiples of 10 masks.



Technical specification sheets available on request

Disposable Gloves

- Nitrile examination gloves
- Powder-free
- Available in different sizes (Large mainly used)
- Packed 100 pieces per box

- Certified: ASTM D6319-10
- Timing: 6 weeks via sea freight, 3 weeks by air freight



Technical specification sheets available on request

Cleaning Wipes

Technical specification sheets available on request

- Antibacterial wet wipes
- Proven to kill 99% of germs*
- 100 wipes per pack (12 packs/box)
- Suitable around baby equipment, food preparation areas and toilets
- Free from Alcohol, Paraben



**Effective against Escherichia coli ATCC 10536, Staphylococcus aureus ATCC 6538, Pseudomonas aeruginosa ATV 15442, Enterococcus hirae ATCC 10542, Escherichia coli K12 NCTC 10538)*

- 75% alcohol with lemon fragrance
- 120 wipes per pack
- Period after opening = 6 months (due to alcohol content)
- Expiry if not open is 2022
- Reach compliant: 1907/2006, Annex II (COMMISSION REGULATION (EU) No 2015/830).



- WOW Antil bac Surface Disinfectant Wipes
- 70% ethyl alcohol
- 600 wipes per tub



Sanitation Station

A modular unit which houses sanitation equipment and communicates coronavirus information.

The unit can be made to various sizes to suit different locations.

Our standard sizes are:
2400mm x 1200mm x 400mm,
2400mm x 600mm x 400mm



Contact: hello@thedeltagroup.co.uk

Hand Sanitiser

500ml Moisturising Hand Sanitiser.

- Kills 99.99 percent of germs
- Moisturising on hands
- Lemon fragrance

Labelling can be designed to feature your chosen branding.

YOUR BRANDING HERE



Contact: hello@thedeltagroup.co.uk

Clothing

Branded re-useable apron /T-shirts.



Contact: hello@thedeltagroup.co.uk

Hi-Vis Vests

BACK



OPTION 1



OPTION 2



FRONT

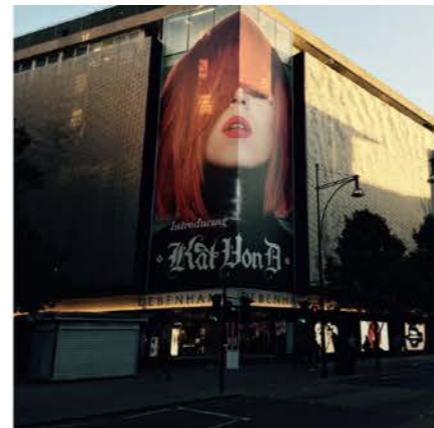
Site Survey, Production and Installation Support

Merchandising, installation, field marketing and audit solutions

Do you need help getting ready for reopening or are open and require support?

We can provide a one-stop shop 'Site Survey, Production and Installation' support for all your needs.

- **Survey / Audit** - We can provide reliable, highly skilled teams to help site survey to ensure your needs are met
- **Design** - We can help artwork and design all the collateral
- **Produce / Source** - We can source bespoke product and produce all the printed collateral
- **Install** - We have a dedicated in-house installation team to expertly project manage and install - both inside and outside stores
- **Technology** - We have technology for accurate real-time reporting on progress.



Delta Group - Health & Safety

Health and safety is at the forefront of our culture

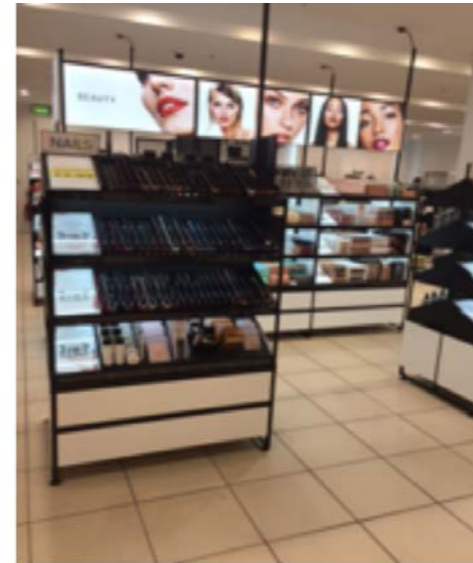
Method statements and risk assessments undertaken for all jobs

All installers are:

- PASMA, IPAF, CSCS and IOSH qualified
- Safe Contractor approved

For more information or to book a store visit please get in touch with your usual Delta contact or send an email to:

hello@thedeltagroup.co.uk



THANK YOU



DELTA | GROUP

EMPOWERING IMAGINATION

hello@thedeltagroup.co.uk