

Sony Case Study

Company profile: Since beginning production in 1977, this SONY facility has played a critical role in the production of SONY professional, consumer and data storage media products for both U.S. domestic and international markets.

Industry: Audio & Video products

Distributor: Fluid Engineering, Inc.

Products: Magnetic and Digital Recording Media

The Story

Jerry and Bill Young of Fluid Engineering selected the [SANDPIPER® Model HDF2,DV5A](#) with it's all Aluminium construction and FKM elastomers to handle this demanding duty. With the Heavy Duty Wear Package components of the HDF pump they will realize even longer wear life from the diaphragms. Sony can still utilize most of their parts inventory for the pumps and did not need to change or re-configure any piping on this project. Jerry said " I know when I rebuild one of these pumps that when it goes back into service that it will just work". It's ruggedness and On-Off-On reliability have served Sony well for almost two decades and that is why when it finally came time to replace the pumps it was an easy decision for them to again trust the design and features of this bottom discharge ported pump.

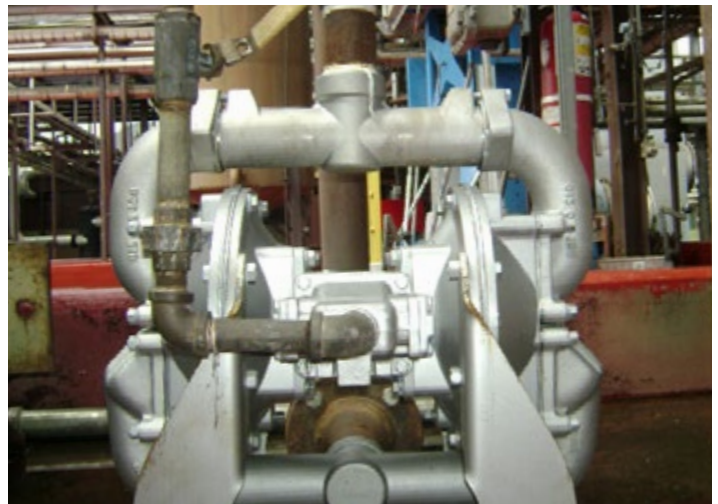
Problem Overview

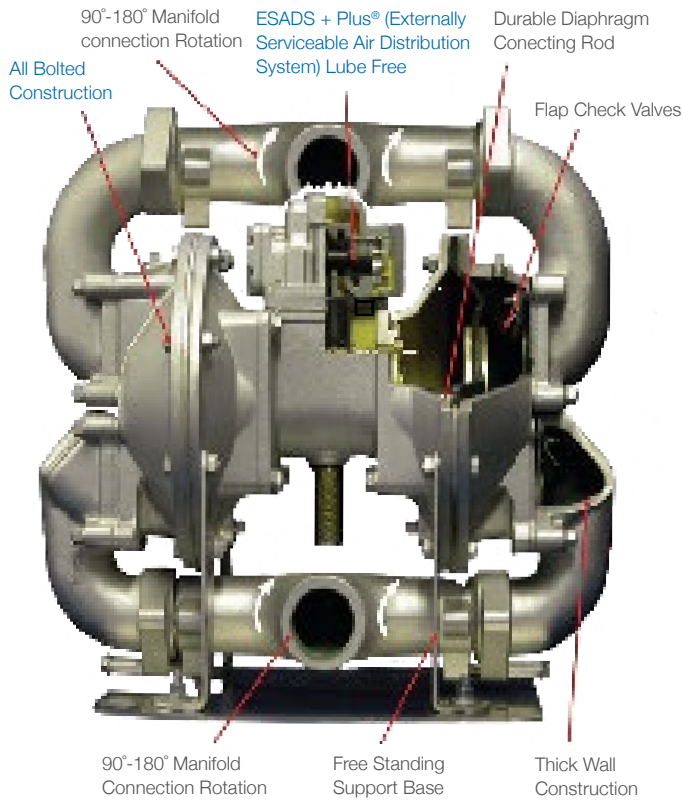
Sony, like many production facilities, has put safeguards in place to protect the environment and their personnel in the event that an upset condition were to happen within their facility. To achieve this, SONY installed a sump system around the perimeter of their facility to catch both

rain water and production fluids. This extra insurance helps to prevent unwelcome fluids from entering the City of Dothan's sewer system and contacting the grounds outside the plant site. In 1991, three model SA2-A Flap Valve pumps were installed to handle the task of pumping out of this sump system, ensuring employee safety as well as a cleaner, safer environment.

Solution Overview

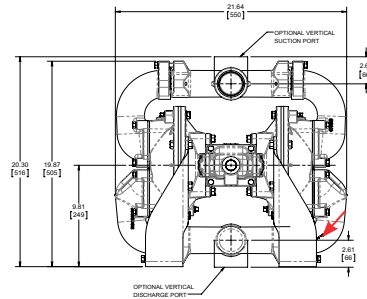
After 18 years of operation, Jerry Williams of Sony decided that these three units had reached the end of their service life and the time had come to replace them. He had many options but knew in this application reliability, excellent priming capabilities and the ability to handle solids were a must. Satisfied with the life and performance of the original three units, he again looked to the Warren Rupp - SANDPIPER Flap Valve pump to successfully and safely do the job.



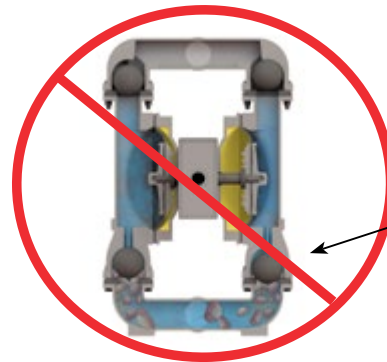
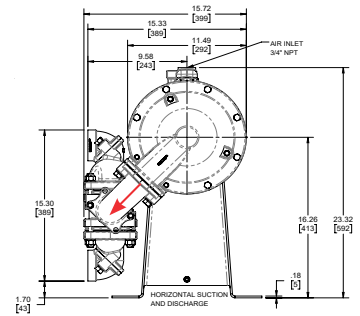


Exclusive Bottom Dishcharge Porting for difficult solids handling

Heavy Duty Flap



Heavy Duty Ball



Standard Duty

- Broken Diaphragm Plates
- Premature diaphragm failure resulting from non-uniform wear
- Bent rods
- Solids settle in bottom of water chamber
- Restriction of suction check ball valve



Heavy Duty Flap

- Bottom Discharge
- Dry primes up to 24 Feet of Water
- Solids Range +1" (25mm) to 3" (76MM)
- HD Extended Wear Package (2' to 4") Discharge



Wear Package Components

- Diaphragm Extended Wear Pad
- Heavy Duty Actuator Plunger with O-Ring
- Heavy Duty Plunger Bushing

FIND A DISTRIBUTOR →

SANDPIPER®

800 North Main Street
Mansfield, OH 44902

419-524-8388

sandpiperpump.com