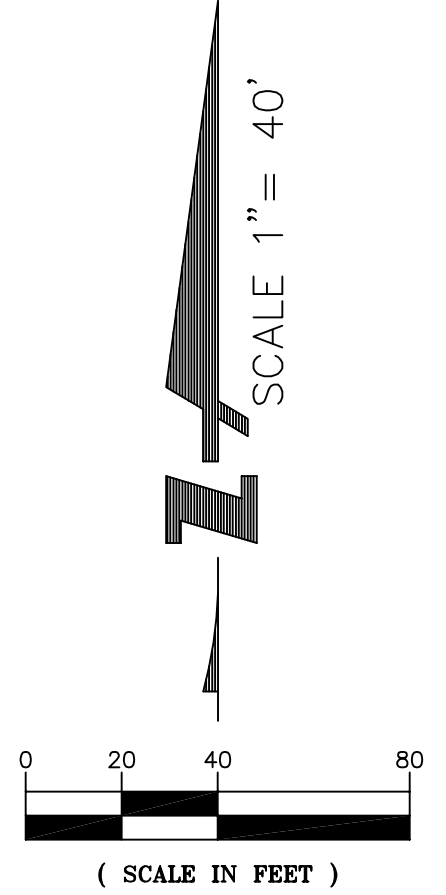


NOTES

1. ST. JOHN STREET OVERLOOK PLAZA
2. TENNIS COURTS
3. CONFLUENCE POINT
4. SANTA CLARA STREET OVERLOOK PLAZA
5. THE CHILDREN'S CAROUSEL
6. TOT LOT & PLAYGROUND



ITEMS OF CULTURAL SIGNIFICANCE

- A. WEAVER'S GIFT
- B. FIVE SKATERS
- C. SAN JOSE VIETNAM MEMORIAL
- D. RANGERS STATION
- E. TRIBUTARIES MONUMENT

HEIGHT LIMITATION

DESIGN COMPETITION HEIGHT LIMITATION IS 200 FEET ABOVE EXISTING GRADE.

EXISTING PUBLIC ART AND AMENITIES ON THE SITE THAT CANNOT BE MOVED OR ALTERED

- GUADALUPE RIVER TRAIL
- TRIBUTARIES MONUMENT
- SAN JOSE VIETNAM MEMORIAL
- WEAVER'S GIFT
- FIVE SKATERS (INCLUDING THE REFLECTIVE POOL, PILLARS AND METAL STANDS)

EXISTING AMENITIES ON THE SITE THAT CANNOT BE MOVED BUT CAN BE ACTIVATED AND IMPROVED

- ST. JOHN STREET OVERLOOK PLAZA
- CONFLUENCE POINT
- SANTA CLARA STREET OVERLOOK PLAZA
- GRPC SATELLITE VISITOR CENTER (PLANNED TO BE USED FOR PARK-SERVING COMMERCIAL AND VISITOR SERVICES)
- THE EXISTING BRIDGE CAN BE MODIFIED BUT THE STRUCTURE MUST REMAIN

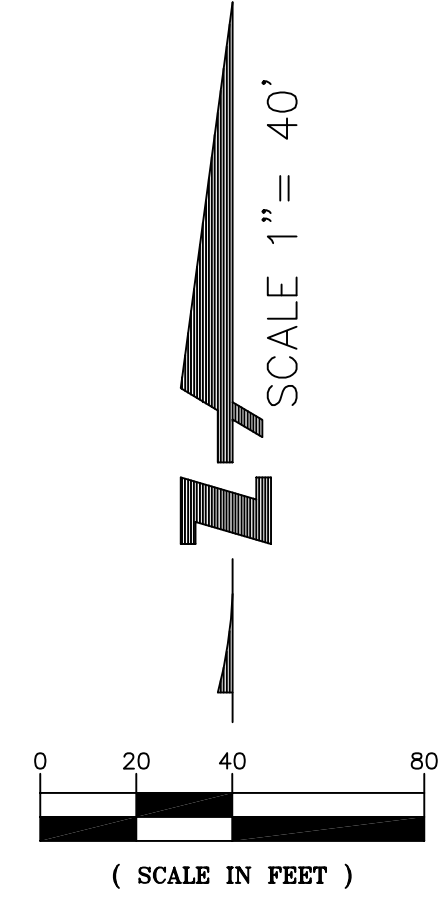
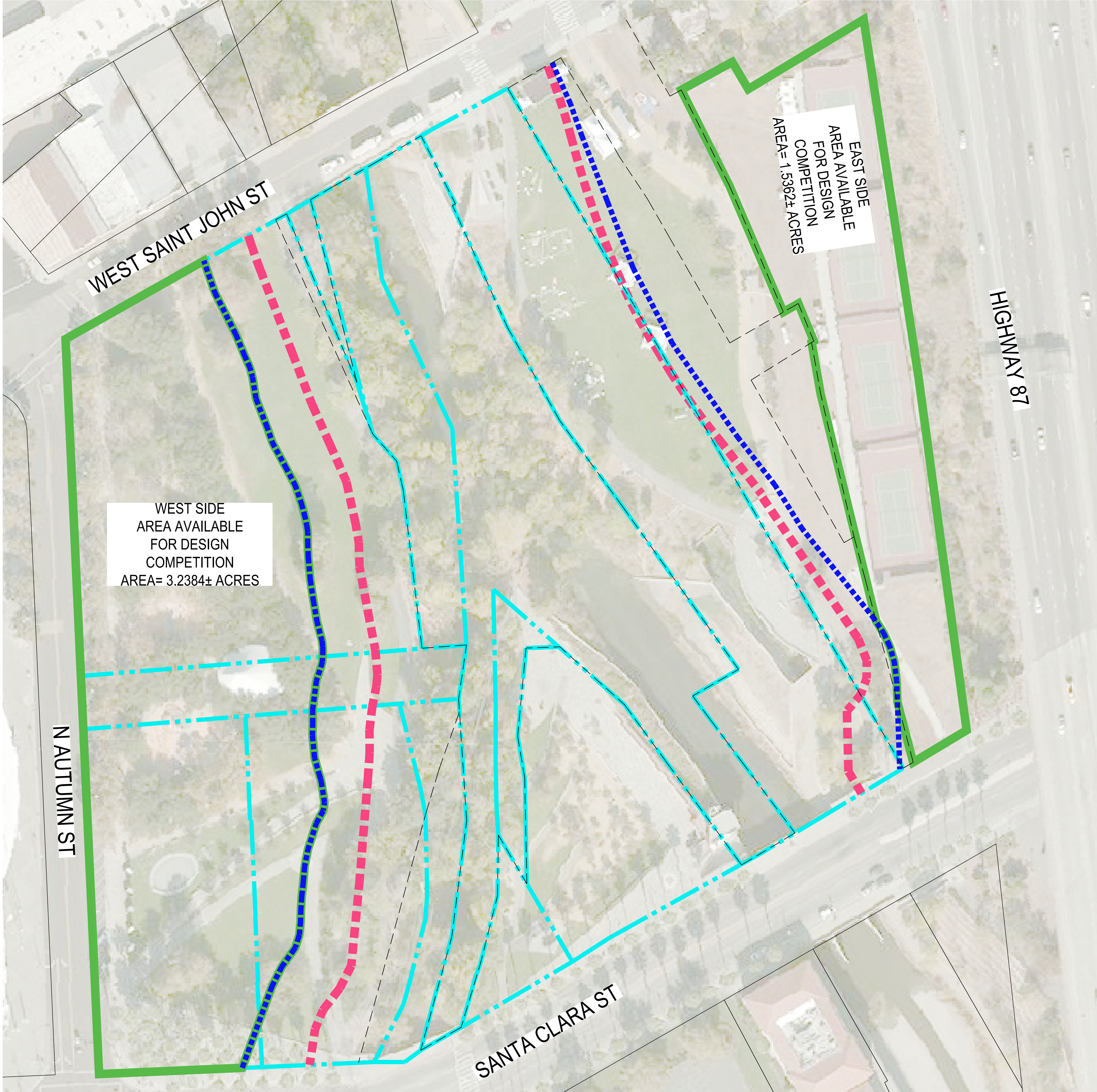
EXISTING ASPECTS OF THE SITE THAT CAN (OR ARE ALREADY PLANNED TO) BE MODIFIED OR RELOCATED CONSISTENT WITH CITY OF SAN JOSÉ ORDINANCES. THEY CAN BE RELOCATED ON-SITE OR OFF-SITE

- TENNIS COURTS
- CHILDREN'S CAROUSEL
- TOT LOT & PLAYGROUND
- TREES (INCLUDING PALM TREES)
- DONOR RECOGNITION ELEMENTS, INCLUDING BENCHES AND PLAQUES, MUST BE PRESERVED, BUT MAY BE RELOCATED ON-SITE WITH APPROVAL OF GRPC AND PRNS IN COORDINATION WITH THE DONORS.

LEGEND

- PARCEL LINE
- S.C.V.W.D. SLOPE STABILITY SETBACK LINE
- EASEMENT LINE
- OVERHEAD ELECTRIC LINE
- BOX CULVERT
- CULVERT INLET
- OWNED IN FEE BY S.C.V.W.D.
- EASEMENT TO S.C.V.W.D.
- 100' RIPARIAN SETBACK PER CITY COUNCIL POLICY 6-34
- AREA AVAILABLE FOR DESIGN COMPETITION

No.	Revisions

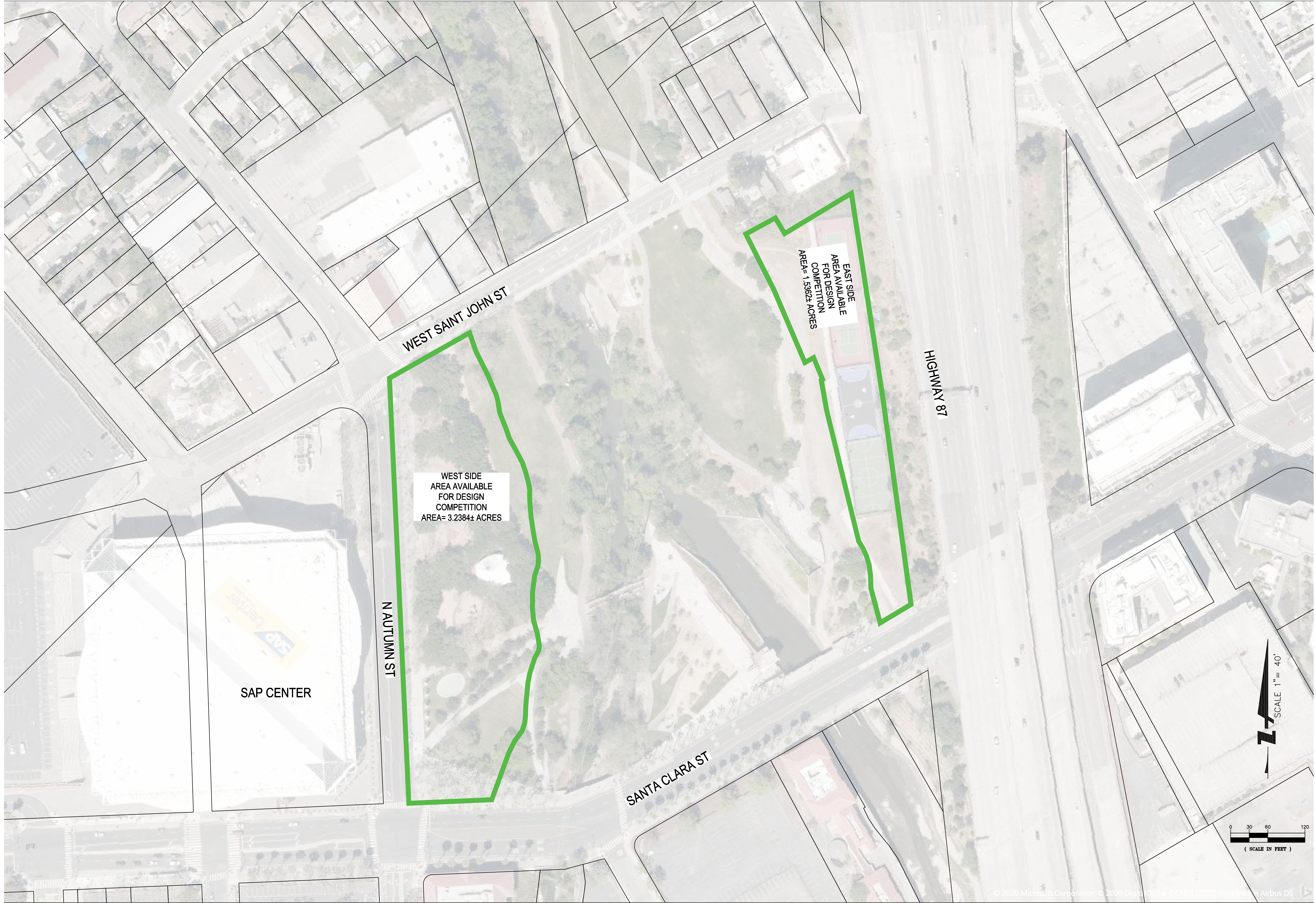


LEGEND

- PARCEL LINE
- S.C.V.W.D. SLOPE STABILITY SETBACK LINE
- EASEMENT LINE
- OVERHEAD ELECTRIC LINE
- BOX CULVERT
- CULVERT INLET
- OWNED IN FEE BY S.C.V.W.D.
- EASEMENT TO S.C.V.W.D.
- 100' RIPARIAN SETBACK PER CITY COUNCIL POLICY 6-34
- AREA AVAILABLE FOR DESIGN COMPETITION

BKF ENGINEERS, INC. 1730 N. FIRST STREET, SUITE 600, SAN JOSE, CA 95112
 TEL: 408-467-5100 FAX: 408-467-5101 WWW.BKF.COM

Date: 07-15-2019	No.	Revisions
Scale: 1"=40'		
Design: DAL		
Drawn: BC		
Approved: DJ/BS		
Job No:		
Drawing Number:		



WEST SAINT JOHN ST

WEST SIDE
AREA AVAILABLE
FOR DESIGN
COMPETITION
AREA= 3.2384± ACRES

EAST SIDE
AREA AVAILABLE
FOR DESIGN
COMPETITION
AREA= 1.5382± ACRES

HIGHWAY 87

SAP CENTER

N AUTUMN ST

SANTA CLARA ST

