

# INDUSTRIAL BLACK PIPE

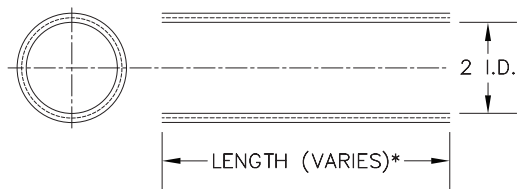
## TECHNICAL SPECIFICATIONS

**KEGWORKS**  
Tools for Drinking

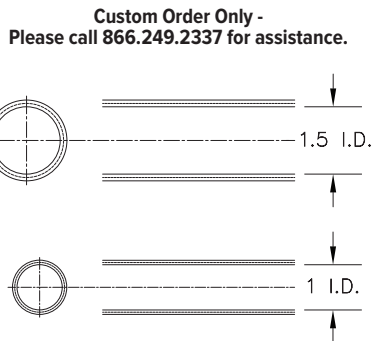
When installing your bar rail, it's important to build with precision. These technical drawings will provide you with accurate measurements, but please call one of our sales representatives if you have any questions about measurements or installation.

### TUBING

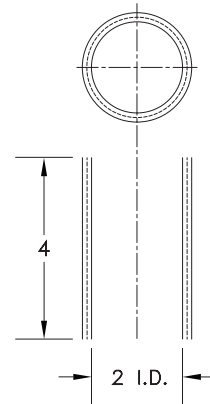
Most bar rail is spec'd by outside diameter, but Industrial Black Pipe is spec'd by inside diameter due to its "twist-on" installation method. Our standard inside diameter size is 2", but 1½" and 1" are available by request.



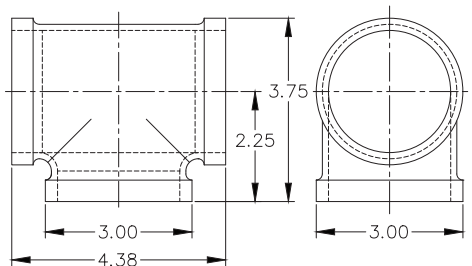
\*Our stock bar rail length is 44.5",  
but we can custom cut it to any  
size to fit your bar



### CONNECTOR

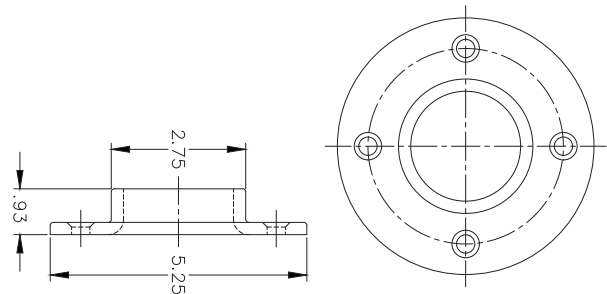


### TEE FITTING



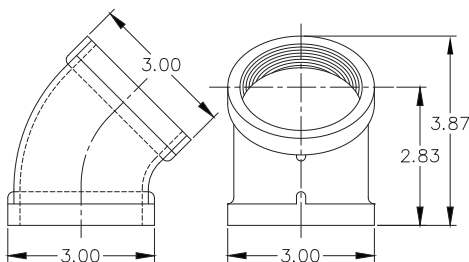
Black Pipe Foot Rail Tee Fitting

### FLANGE

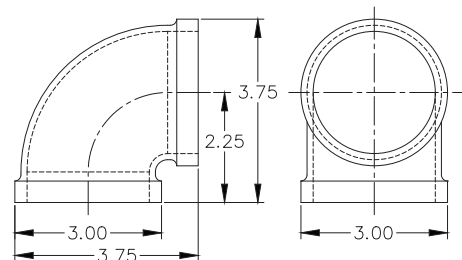


Black Pipe Foot Rail Flange

### ELBOWS



Black Pipe Foot Rail 45 Degree Elbow



Black Pipe Foot Rail 90 Degree Elbow