

POLISHED STAINLESS STEEL

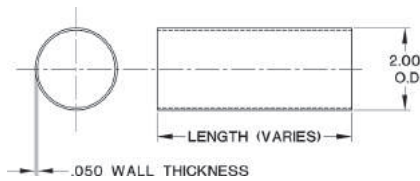
BAR RAIL TECHNICAL SPECIFICATIONS

KEGWORKS
Tools for Drinking

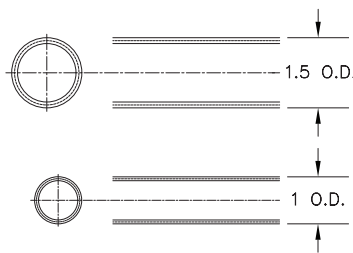
When installing your bar rail, it's important to build with precision. These technical drawings will provide you with accurate measurements, but please call one of our sales representatives if you have any questions about measurements or installation.

TUBING

As a part of our line of standard line of bar foot rail products, Polished Stainless Steel is spec'd by outside diameter. Polished Stainless Steel 2" outside diameter tubing and components are kept in stock and ready to ship, but 1½" and 1" components are available by request.



Custom Order Only -
Please call 866.249.2337 for assistance

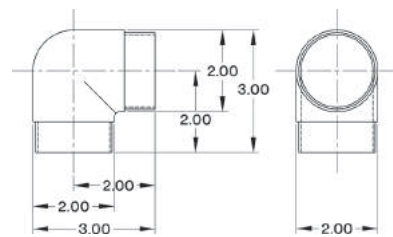


SPLICING SLEEVE

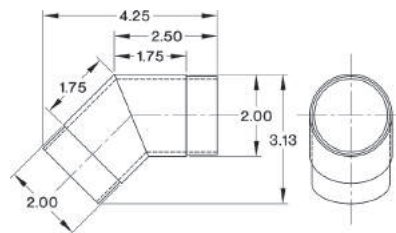


Internal Splicing Sleeve
for 2" OD Tubing

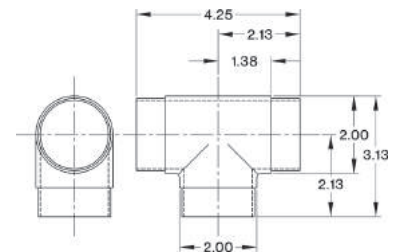
ELBOWS & FITTINGS



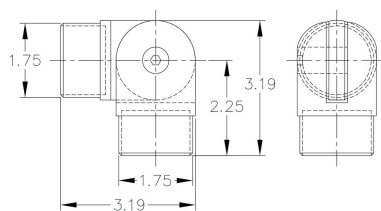
2" Polished Stainless Steel
Flush Elbow Fitting 90 Degree



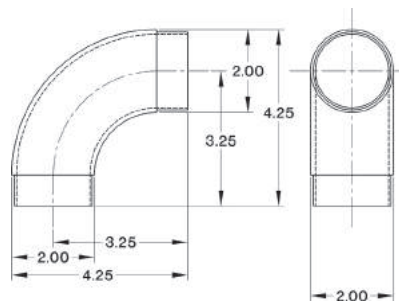
2" Polished Stainless Steel
Flush Angle Fitting 135(45) Degree



2" Polished Stainless Steel
Flush Tee Handrail Fitting



2" Polished Stainless Steel
Adjustable Flush Elbow Fitting



2" Polished Stainless Steel
Curved Flush Elbow Fitting 90 Degree

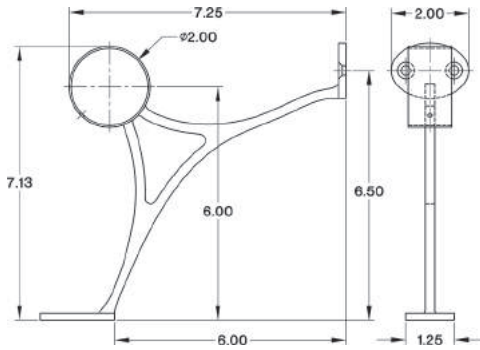
POLISHED STAINLESS STEEL

BAR RAIL TECHNICAL SPECIFICATIONS

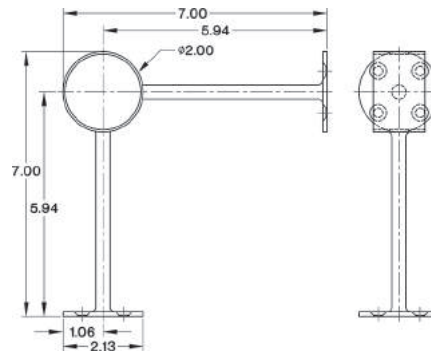
KEGWORKS
Tools for Drinking

When installing your bar rail, it's important to build with precision. These technical drawings will provide you with accurate measurements, but please call one of our sales representatives if you have any questions about measurements or installation.

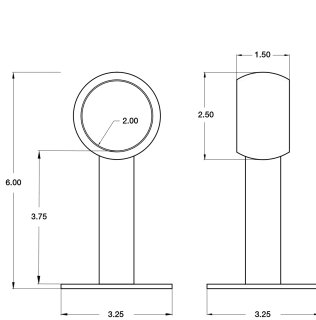
BRACKETS



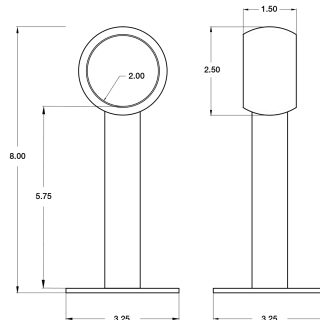
**2" Polished Stainless Steel
Combination Foot Rail Bracket**



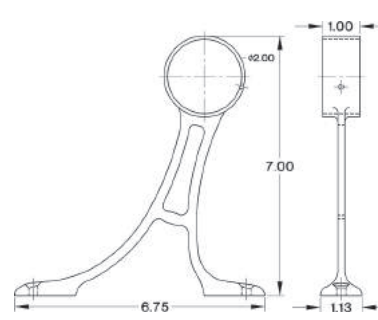
**2" Polished Stainless Steel
90 deg. Post Foot Rail Bracket**



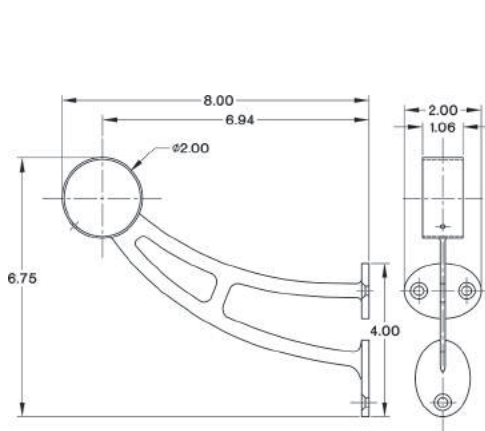
**2" Polished Stainless Steel
Rounded Center Post Bracket**



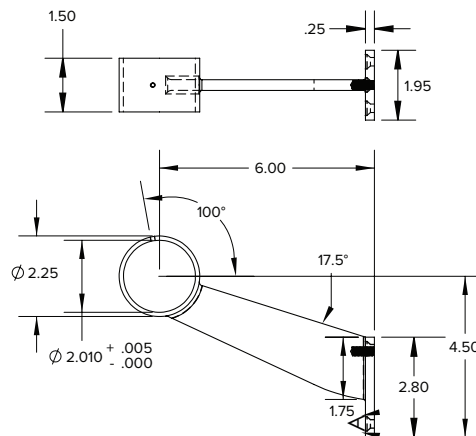
**2" Polished Stainless Steel
Tall Rounded Center Post Bracket**



**2" Polished Stainless Steel
Floor Mount Foot Rail Bracket**



**2" Polished Stainless Steel
Bar Mount Foot Rail Bracket**



**2" Polished Stainless Steel
Contemporary Foot Rail Bracket**

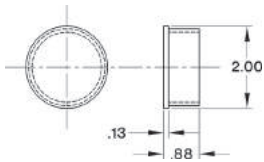
BRUSHED STAINLESS STEEL

BAR RAIL TECHNICAL SPECIFICATIONS

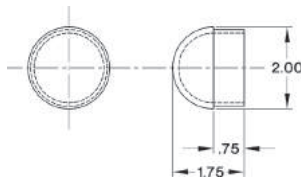
KEGWORKS
Tools for Drinking

When installing your bar rail, it's important to build with precision. These technical drawings will provide you with accurate measurements, but please call one of our sales representatives if you have any questions about measurements or installation.

END CAPS & FLANGES

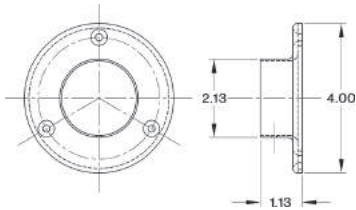


**2" Polished Stainless Steel
Flushed Flat End Cap**

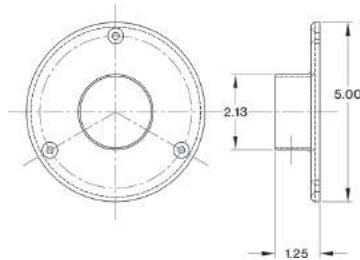


**2" Polished Stainless Steel
Domed End Cap**

FLANGES



**Polished Stainless Steel
4" Wall Flange (2" OD)**



**Polished Stainless Steel
5" Heavy Duty Floor & Ceiling Flange (2" OD)**