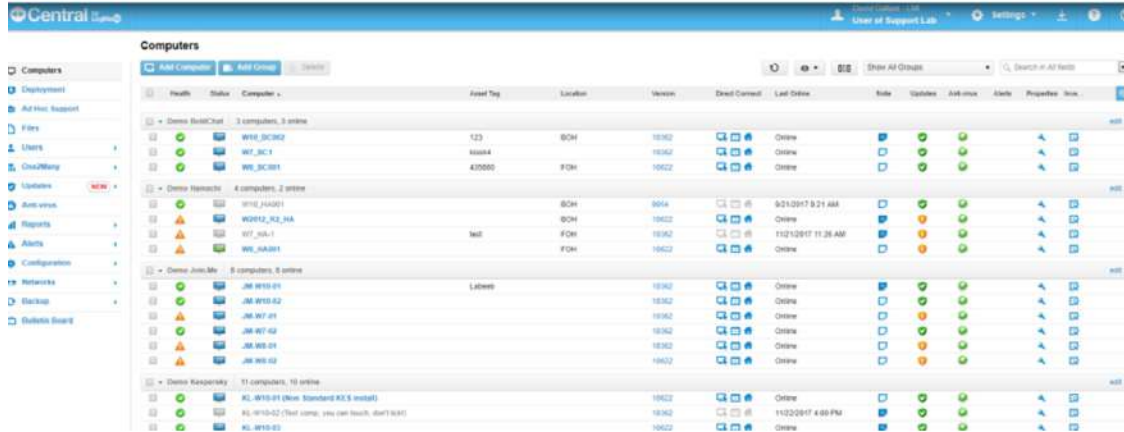




Central

Secure Cloud Services for your online business since 1999.
.Reliable .Secure .Speed .Scalable .Manageable .Compliant

Powered By:



Remotely deploy & automate routine IT tasks
Reliable Endpoint Management & Security
for Business

Features



HD Remote Access



User & Device Management



Multi-Monitor Display & Support



Background Access & File Transfer



Advanced Scripting & Proactive Alerts



Asset Management



Call Analytics



Born in the cloud

Benefits



Scalability & Reliability



Security & Organization Policies



Remote Deployment



Antivirus Management



Computer Grouping



User Management



Computer Health Monitoring



27x7 Expert Support

Learn More <https://www.xcellhost.cloud/central>

Plans

| | BASE | SECURITY | AUTOMATION | INSIGHT |
|---|------|----------|------------|---------|
| HD Remote Access | ✓ | ✓ | ✓ | ✓ |
| User & Device Management | ✓ | ✓ | ✓ | ✓ |
| Computer Grouping | ✓ | ✓ | ✓ | ✓ |
| Two-Factor Authentication | ✓ | ✓ | ✓ | ✓ |
| Deployment | ✓ | ✓ | ✓ | ✓ |
| Computer Search | ✓ | ✓ | ✓ | ✓ |
| Online/Offline Status | ✓ | ✓ | ✓ | ✓ |
| Multi-Monitor Display | ✓ | ✓ | ✓ | ✓ |
| Multi-Monitor Support | ✓ | ✓ | ✓ | ✓ |
| Ad Hoc Support | ✓ | ✓ | ✓ | ✓ |
| Mass Delete | ✓ | ✓ | ✓ | ✓ |
| Background Access | ✓ | ✓ | ✓ | ✓ |
| File Transfer | ✓ | ✓ | ✓ | ✓ |
| File Sharing | ✓ | ✓ | ✓ | ✓ |
| Desktop Sharing | ✓ | ✓ | ✓ | ✓ |
| Remote Print | ✓ | ✓ | ✓ | ✓ |
| Remote Sound | ✓ | ✓ | ✓ | ✓ |
| Desktop Shortcut | ✓ | ✓ | ✓ | ✓ |
| Host Preference Packages | ✓ | ✓ | ✓ | ✓ |
| API Access | ✓ | ✓ | ✓ | ✓ |
| Mobile Access | ✓ | ✓ | ✓ | ✓ |
| 256-bit SSL Encryption | ✓ | ✓ | ✓ | ✓ |
| Premium Customer Support (purchase 3 modules) | | ✓ | ✓ | ✓ |
| Patch Management | | ✓ | | |
| Windows Updates | | ✓ | | |
| Application Updates | | ✓ | | |
| LogMeIn Antivirus | | ✓ | | |
| Antivirus Management | | ✓ | | |
| One2Many Automated Task Management | | | ✓ | |
| Advanced Scripting | | | ✓ | |
| Self-Healing Alerts | | | ✓ | |
| Proactive Alerts | | | ✓ | ✓ |
| Asset Management | | | | ✓ |
| Dashboard & Reporting | | | | ✓ |
| Computer Audit & Inventory | | | | ✓ |