

VideoTrak X



VideoTrak X is Oriux and Citilog's newest video detection technology combined into one easy-touse and powerful video detection product.

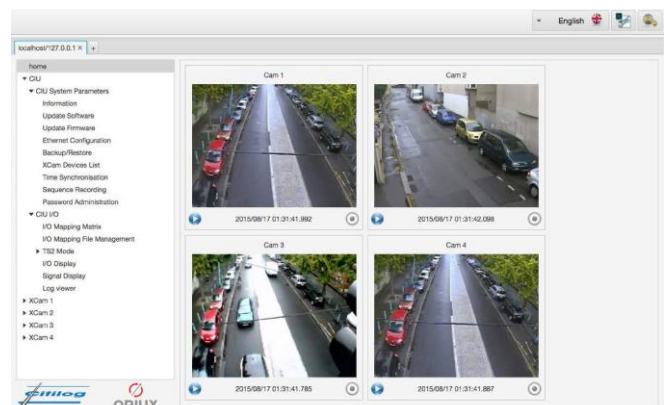
Pairing the latest technology of the Oriux VideoTrak X family of video detection products and the innovative smart camera from Citilog, the VideoTrak X is the future of ITS video detection. VideoTrak X supports up to 8 cameras per Cabinet Interface Unit (CIU) allowing unparalleled modularity and compact space-saving installations in NEMA or CALTRANS style cabinets.

VideoTrak X centralizes the set-up and configuration of all connected cameras without the need for additional wiring or a PC computer- Just a mouse and a monitor!



Key Benefits

- Digital video input camera
- Highest performance Wide-Dynamic-Range CMOS sensor
- Compliant with NEMA TS2/TS1 and CALTRANS traffic control cabinets
- Ethernet connection/ IP addressable capabilities
- High efficiency algorithm with comprehensive filters for all weather and lighting conditions
- Video streaming capability
- Low power consumption
- Easy installation and setup



The evolution of PEEK

Specifications

Standards	NEMA TS1/TS2
Compliance	CALTRANS TEES 2009
Environmental	
Temperature	-40C to +85C (-40F to +185F)
Dimensions	Height: 4.50" (114.3mm) Width: 2.34" (59.4mm) Depth: 6.88" (174.7mm) Handle: 1.09" (27.6mm)
Voltage	10-26 VDC
Additional Features (Front Panel)	<ul style="list-style-type: none"> • SDLC communication port allows direct connection for all TS2 environments which also makes available up to 64 output assignments and 16 phase color inputs • 2 host, 1 device USB 2.0 connections allow one to be used for a mouse while the other is being used to save system configurations via a Flash Drive. It can also be used to upload new Firmware and Upgrades as they become available • Ethernet Ports – Units are "IP-Addressable" allowing video streaming for hi quality remote monitoring and configuration adjustments
Features	<ul style="list-style-type: none"> • SD card • No PC required for setup – Just a mouse and a monitor • Individual zone settings include: Sensitivity • Web Interface • Card edge connector includes 4 outputs and 2 conditional inputs • Card is selectable to be fully compliant with NEMA or CALTRANS standards • Event Log for viewing system events with date /time stamp • Battery backed Real Time Clock

Cabinet Interface Unit

- Sensor**
- 1/4" VGA CMOS sensor.
 - Minimum illumination 0.04 lux @ f/1.2. Anti-blooming, zero smearing
 - Signal to Noise ratio: >50dB
- Housing**
- IP67 Injection molded polycarbonate housing. Sun shield for hot climate and direct sun exposure. Size: 132 x 254 x 124 mm
 - Power Supply: +12/24V AC/DC
 - Power consumption: < 3W
 - -34°C / +74°C
 - Humidity: 0 to 95% RH, no condensing.
 - Weight: 600 g
- Detection Highlights**
- High performance trajectory and tracking based vehicle presence detection.
 - High efficiency algorithm with comprehensive filters for all weather and lighting conditions.
 - Easy setup, configuration and maintenance.
 - Video streaming capability.

