

COVID Companion

MaineGeneral Health



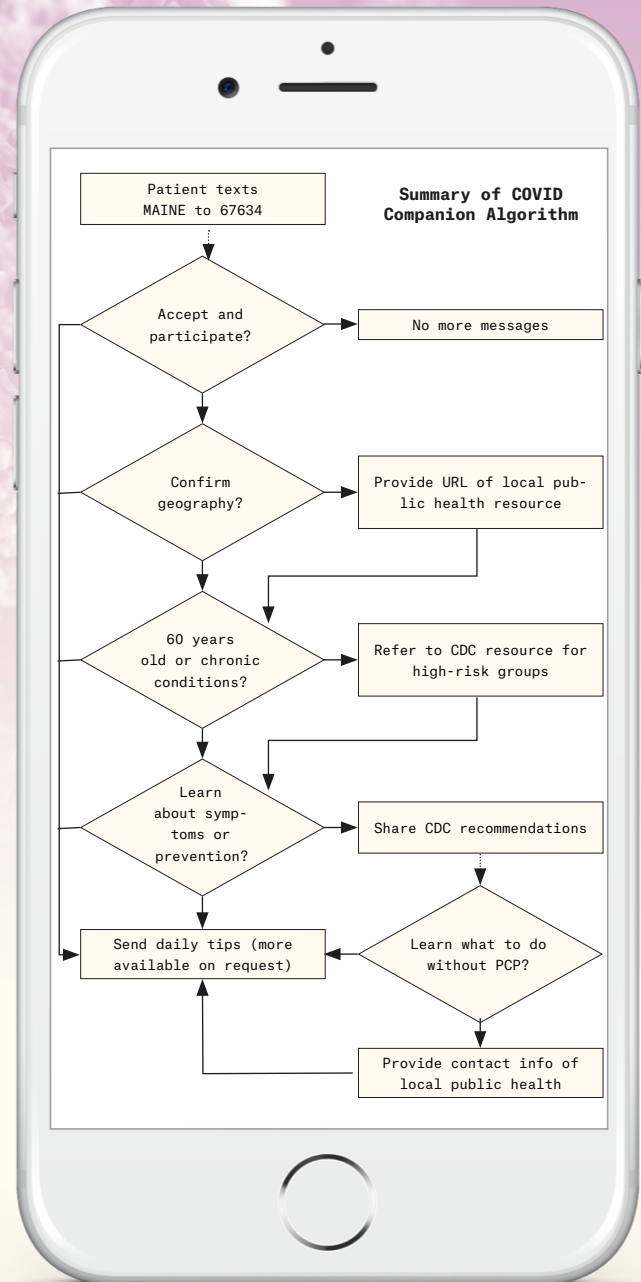
CareSignal™

COVID Companion is a patient-facing, interactive chatbot that shares local public health resources, educational tips, and recommendations from the CDC regarding COVID-19—regardless of patient infection status.

- Offers CDC recommendations based on patient age and chronic condition status.
- Reminds patients about key symptoms upon provider-directed home-quarantine.
- Self-contained. Will not trigger alerts or notification to patients' clinical teams.*
- Available for all community members, not just your current patients.
- Free to use, accessible, SMS-based. Message or data rates may apply.
- Not an app. Convenient text messages, no download required.
- More information available at caresignal.health/covid/mainegeneral

Share COVID Companion

Text **MAINE** to **67634**
or scan this QR code with
your camera app.



CareSignal is a scalable remote patient monitoring platform that improves payer and provider performance in value-based care by engaging and identifying rising-risk patients before they worsen. With 10 peer-reviewed publications, CareSignal provides clinically-relevant engagement for 25 conditions, including Diabetes, Heart Failure, COPD, Depression, and more.

* Use CareSignal's post-discharge program to keep tabs on populations. This program will not send data to a doctor and is not a replacement for medical care or emergency services.