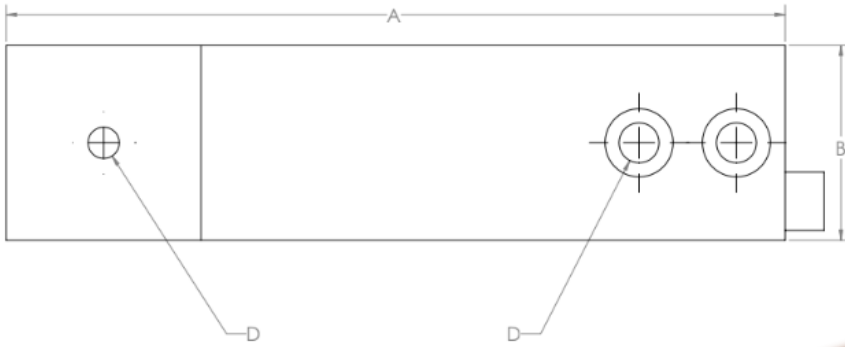
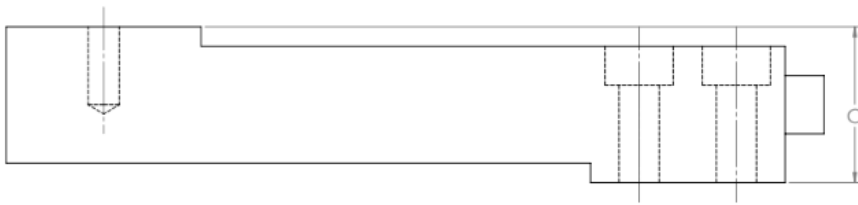




Custom Bending Shear Beam Load Cell



A	Overall Length	Customer Specified
B	Overall Width	Customer Specified
C	Overall Thickness	Customer Specified
D	Mounting Pattern	Customer Specified



STANDARD PERFORMANCE SPECIFICATIONS

MODEL / TYPE	Bending Shear Beam
CAPACITY (FS)	0.25 to 20,000 lbs
OUTPUT	2.0 mV/V (Nominal), Others Available
BRIDGE RESISTANCE	350 Ohms (Nominal), Others Available
MAXIMUM ERROR (ACCURACY)	0.05 to 0.25% of FS
ZERO BALANCE	1% of FS
STANDARD OPERATING TEMP RANGE	-65 to +200°F (-54 to +93°C)
OPTIONAL OPERATING TEMP RANGE	-452 to +500°F (-269 to +260 °C)
SAFE OVERLOAD	150% of FS
ENVIRONMENTAL PROTECTION	Lab Environment to Fully Submersible/Waterproof
MATERIAL OPTIONS	Stainless Steel, Aluminum, Titanium

FEATURES

- NIST traceable calibration
- Operation in tension and compression
- Capacity 0.25 to 20,000 lbs
- 150% Overload capacity
- Heat treated stainless steel construction

OPTIONS

- Higher output mV/V
- High level output (0-5 VDC, 0-10 VDC, 4-20mA)
- Harsh environment capabilities
- Custom mounting configurations
- Material options available: Aluminum, Titanium, Beryllium Copper
- Fully submersible/waterproof
- Cryogenic and high temperature
- Custom cable lengths and connectors available

Contact Us for Your Custom Applications

508-992-0872 | info@sensing-systems.com | 7 Commerce Way, Dartmouth, MA 02747 | www.sensing-systems.com/load-cells

