



## WRAPPING TECHNOLOGY

### CSA FULLY AUTOMATIC ROTARY ARM WRAPPER

## CSA FULLY AUTOMATIC ROTARY ARM WRAPPER



### The advantages at a glance!

- Rugged, reliable design with minimal space requirements
- Film stretching steplessly adjustable up to 350% via display and frequency-controlled motors (optional)
- High-quality rotary arm mounting and drive for long service life
- Compact design – low transport costs, simple assembly



Cyklop CSA Twin

### CSA Fully Automatic Rotary Arm Wrapper

The CSA rotary arm wrapper has been developed to meet the increasingly demanding requirements of the industry. The Cyklop CSA is extremely fast, flexible and can process a broad range of package sizes, including products which do not fill the entire pallet. The machine is equipped with a touch panel as standard.

#### Output:

Cyklop CSA955	55 pallets/hour
Cyklop CSA965	65 pallets/hour
Cyklop CSA975	75 pallets/hour
Cyklop CSA Twin	100 pallets/hour

Both stretching systems are mounted on an arm (patented)  
Only one clamping gripper and one sealing system are required.

#### Film stretching system: Power Roller Stretch (PRS)

Film pre-stretching up to 250%. Adjustable with easy-to-replace gearwheels in ideally matched steps. The stretching rollers are coated with a special surface (polyurethane), enabling any film residues to be easily removed.

The stretching system is extremely simple to load with film.  
High-quality design with laser-edged, powder-coated shrouds.



Power Stretch film stretching system (option)

#### Options:

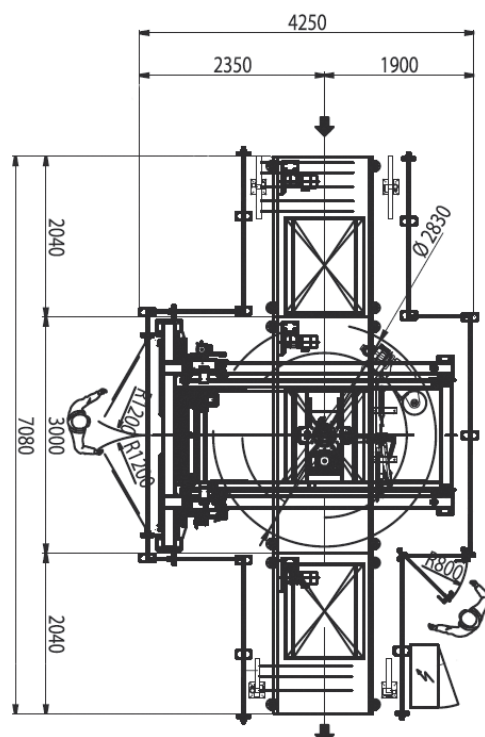
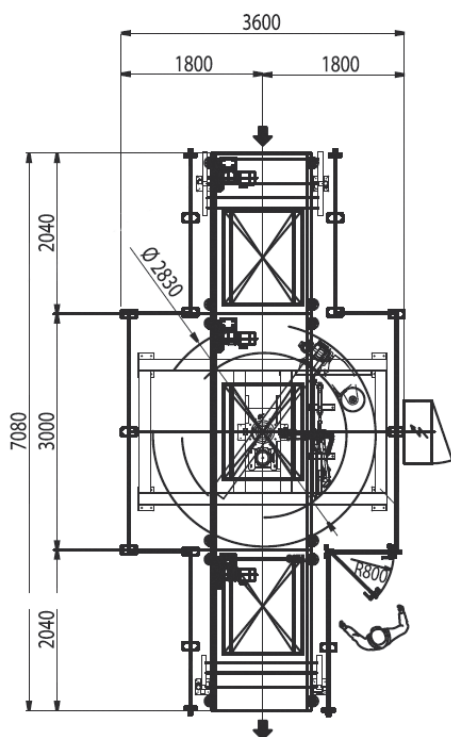
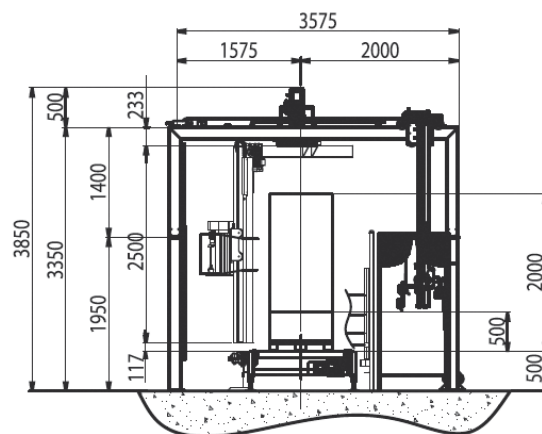
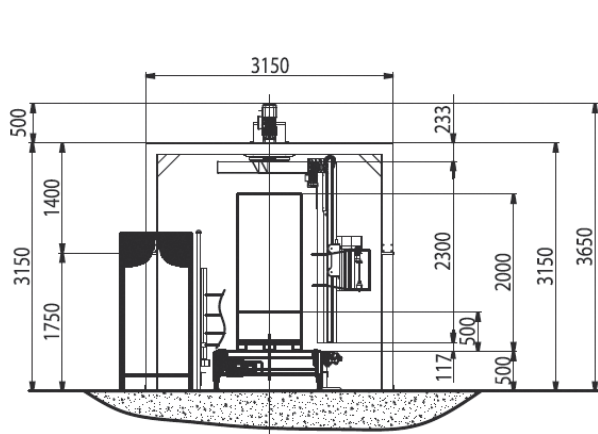
- **Power Stretch (PS)** film stretching system  
Steplessly adjustable pre-stretching up to 350% via touch panel.  
Also suitable for sharp-edged and uneven pallet loads, as the sensitively operating film stretching system minimises damage to the stretch film.
- Top platen
- Top film dispenser integrated
- Cording roll (reduction of the film width to the cord in order to ensure a higher stabilisation of the load)
- The film end is cut off and folded in at the end of the wrapping cycle  
Also suitable for net films.



Top platen (option)

# CSA MODEL SERIES

## TECHNICAL DATA/DIMENSIONS



### Technical Data

Materials handling height (standard)	500 mm
Max. rotating speed	25 - 34 rpm
Total output	3.5 - 6.0 kW
Voltage	400 V/50 Hz/3 Ph+N+PE
Protection type	IP 54
Operating pressure	6 bar
Pre-stretching	up to 350%

### Pallet Dimensions

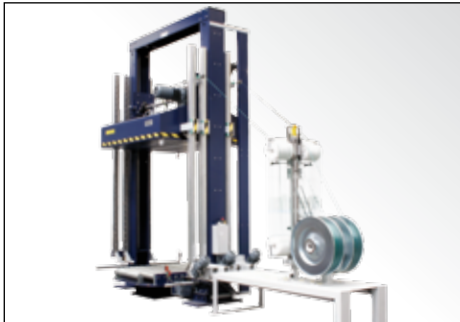
Maximum pallet dimensions:	1,200 x 1,200 mm
Minimum pallet dimensions:	600 x 600 mm
Standard pallet height:	2,200 mm

(additional dimensions on request)



### **CYKLOP STRETCH FILMS**

Optimal coordination between the characteristics of stretch wrappers and those of the stretch films ensures efficient load securement. The range of materials available therefore includes a complete line for a wide variety of applications.



### **CYKLOP STRAPPING SYSTEMS**

The fully automatic and maintenance-friendly Cyklop strapping presses of the XZE series are characterised by innovative technology and top quality. The Cyklop CFH-1 strapping head is equipped with the industry-tested, internationally leading strapping technology and features integrated multistage tensioning technology. And that enables the XZE presses to guarantee fast strapping with maximum tensioning and holding power.



### **CUSTOMER SUPPORT – PREMIUM SERVICE**

Our experts at Cyklop headquarters in Cologne can often help with advice and instructions per telephone. Cyklop has a supply quota of 96% for spare parts, so that from the start delays don't even occur. All service technicians are trained in Cyklop's own training centre, which is also available for intensive user training. Whether an installation of a complete packaging line is required, regular maintenance or the immediate repair of a malfunction – we are always on the spot for advice, help and service. Cyklop has a very dense customer service network in Germany which guarantees a quick response in case of trouble.

**WWW.CYKLOP.COM**

**DIRECT CONTACT: +49 (0) 2236 602 0**

CYKLOP GmbH  
Industriestraße 133  
50996 Köln  
Germany  
info@cyklop.de

