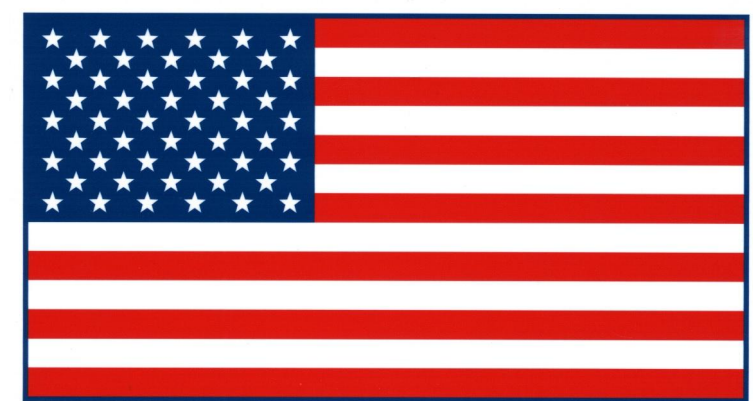
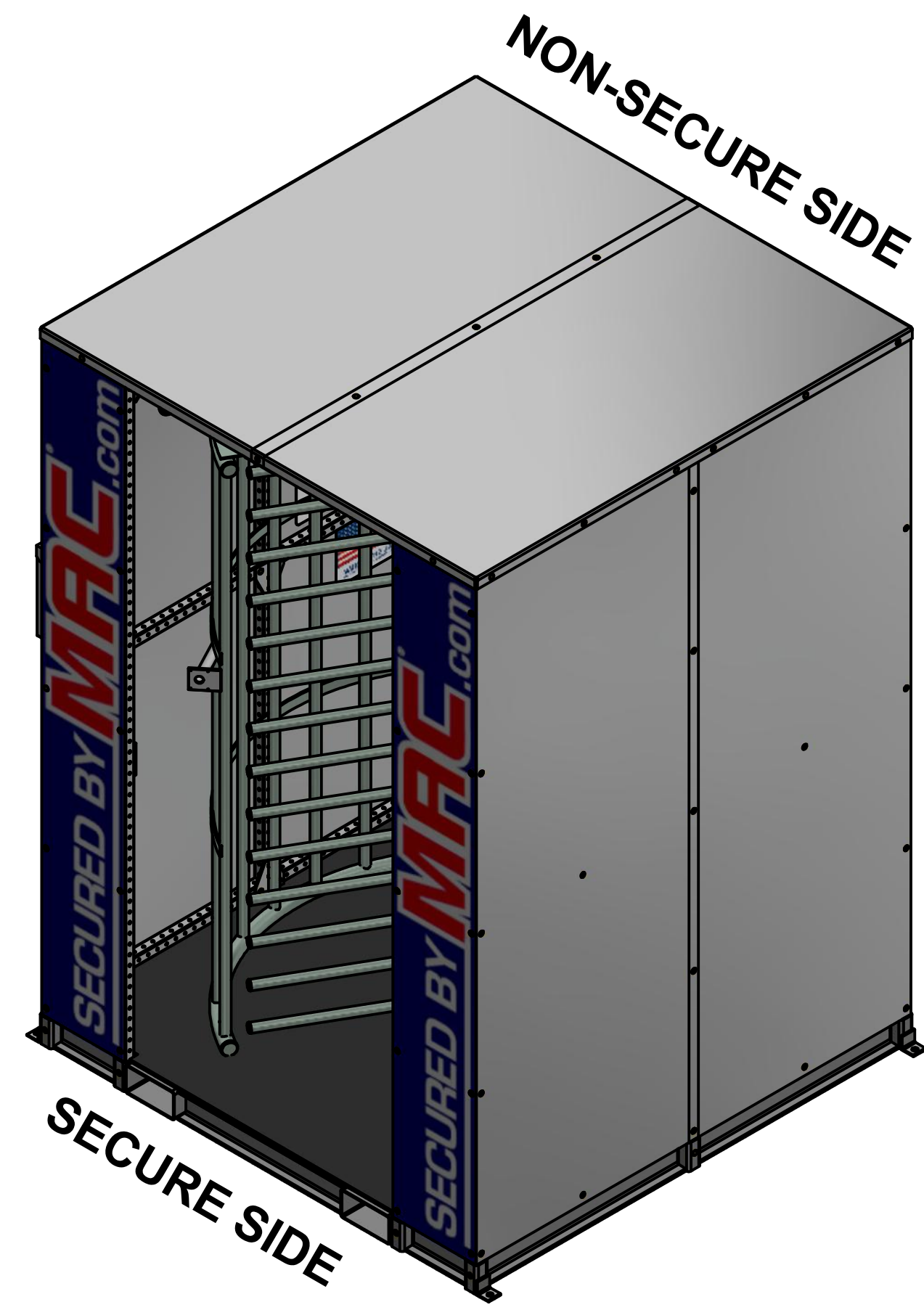
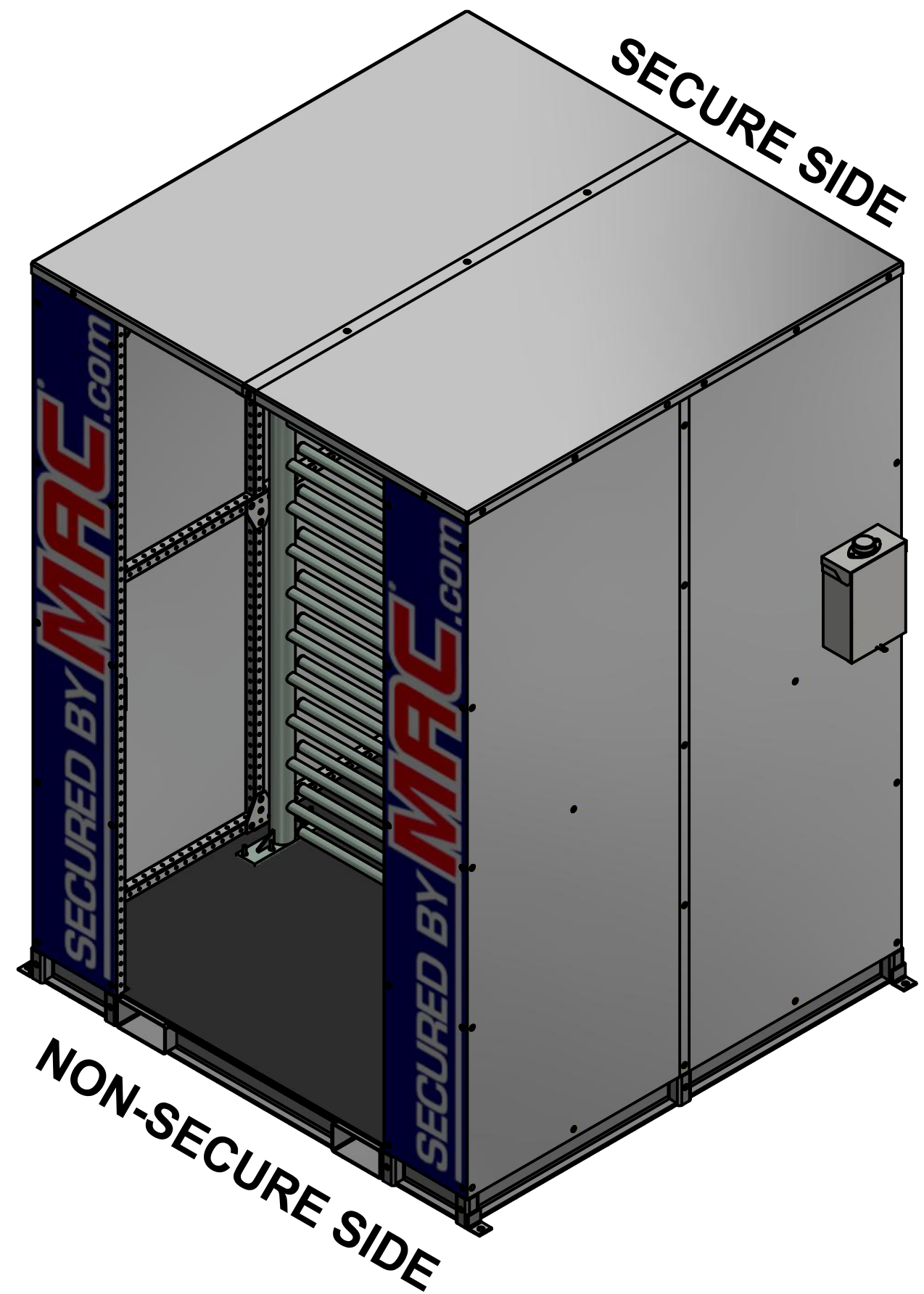
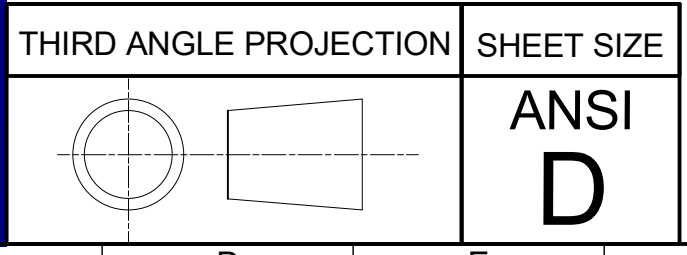


SECURED BY MAC.com



MADE IN THE USA
 IRONTON, OH | WORTHINGTON, KY | WURLAND, KY



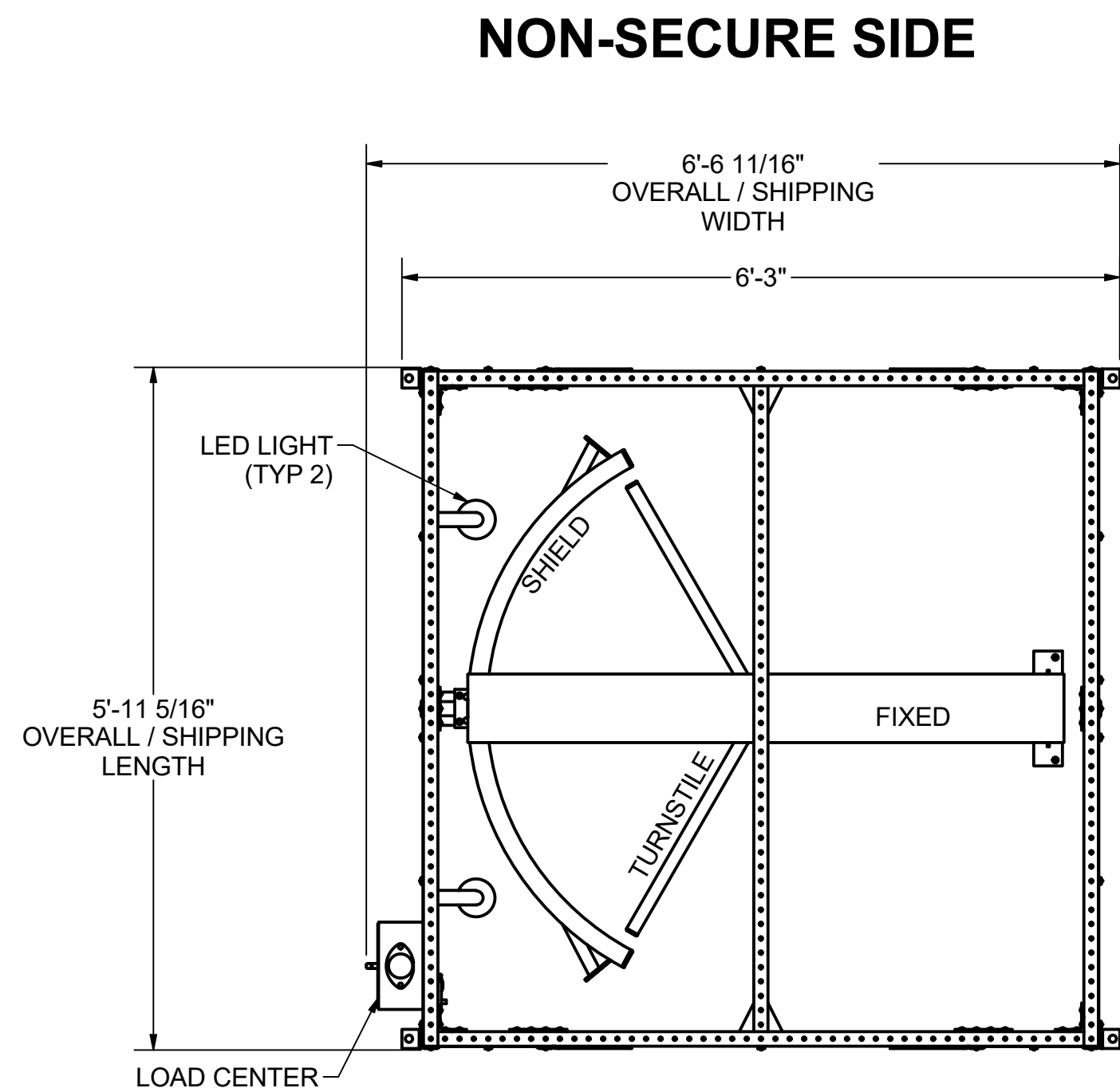
ISOMETRIC SHEET



THIS MSSI PRODUCT IS COVERED BY ONE OR MORE OF THE FOLLOWING PATENTS:
 US 9,404,278; US 9,051,748; US 8,671,624; US 8,015,754; US 7,762,025; 7,823,338;
 CA 2,587,968; CA 2,682,764; EP 1812666; DZ 5173; EG 25627; NG RPNG/C/C2007/737; EP 2137356

THIS DOCUMENT CONTAINS INFORMATION THAT IS CONFIDENTIAL AND PROPRIETARY TO MODULAR SECURITY SYSTEMS, INC. THIS DOCUMENT IS FURNISHED ON THE UNDERSTANDING THAT THE DOCUMENT AND THE INFORMATION IT CONTAINS WILL NOT BE REPRODUCED OR DISCLOSED TO OTHERS WITHOUT THE WRITTEN CONSENT OF MODULAR SECURITY SYSTEMS, INC. OR USED FOR ANY PURPOSE OTHER THAN CONDUCTING BUSINESS WITH MODULAR SECURITY SYSTEMS, INC., AND WILL BE RETURNED AND ALL FURTHER USE DISCONTINUED UPON REQUEST BY MODULAR SECURITY SYSTEMS, INC. COPYRIGHT MODULAR SECURITY SYSTEMS, INC. FIRST YEAR COPYRIGHT IS FIRST YEAR INDICATED ON THIS DOCUMENT. ALL RIGHTS RESERVED.

PROJECT NO		M19-012		CUSTOMER		MSSI STANDARDS		PROJECT		MAC1 - LITE	
TITLE		ISOMETRIC SHEET		DESCRIPTION		REVISIONS		DWG NO		M19-012-M1LX-0100	
NO.		DATE		BY		DESCRIPTION		SCALE		N.T.S.	
F		2/27/2020		NSM		MANUFACTURING REVISION		DRAWN		NSM	
E		2/27/2020		JOY		MANUFACTURING REVISION		CHECKED		JES	
D		11/11/2019		NSM		MANUFACTURING REVISION		ENG. APPR		JES	
C		8/26/2019		NSM		MANUFACTURING RELEASE		SALES APPR		JES	
B		7/15/2019		NSM		PROTOTYPE REVISIONS		MFG. APPR		JES	
COMMENTS:		FINISH ALL SHARP EDGES UNLESS OTHERWISE SPECIFIED.		BREAK ALL SHARP EDGES UNLESS OTHERWISE SPECIFIED.		TOLERANCES ON ALL DIMENSIONS UNLESS OTHERWISE NOTED SHALL BE:		ONE PLACE DECIMAL ±0.03		THREE PLACE DECIMAL ±0.005	
								THE NUMBER IN THE FINISH SYMBOL IS THE MAXIMUM ACCEPTABLE ROUGHNESS VALUE IN A.A. MICRO-INCHES.		ANGULAR ±1°	



GENERAL ARRANGEMENT - PLAN VIEW
SCALE 3/4" = 1'-0"

THIRD ANGLE PROJECTION	SHEET SIZE
	ANSI D

THIS MSSSI PRODUCT IS COVERED BY ONE OR MORE OF THE FOLLOWING PATENTS:
 US 9,404,278; US 9,051,748; US 8,671,624; US 8,015,754; US 7,762,025; 7,823,338;
 CA 2,587,968; CA 2,682,764; EP 1812666; DZ 5173; EG 25627; NG RPNG/C/C2007/737; EP 2137356

THIS DOCUMENT CONTAINS INFORMATION THAT IS CONFIDENTIAL AND PROPRIETARY TO MODULAR SECURITY SYSTEMS, INC. THIS DOCUMENT IS FURNISHED ON THE UNDERSTANDING THAT THE DOCUMENT AND THE INFORMATION IT CONTAINS WILL NOT BE REPRODUCED OR DISCLOSED TO OTHERS WITHOUT THE WRITTEN CONSENT OF MODULAR SECURITY SYSTEMS, INC. OR USED FOR ANY PURPOSE OTHER THAN CONDUCTING BUSINESS WITH MODULAR SECURITY SYSTEMS, INC., AND WILL BE RETURNED AND ALL FURTHER USE DISCONTINUED UPON REQUEST BY MODULAR SECURITY SYSTEMS, INC. COPYRIGHT MODULAR SECURITY SYSTEMS, INC. FIRST YEAR COPYRIGHT IS FIRST YEAR INDICATED ON THIS DOCUMENT. ALL RIGHTS RESERVED.

MSSI
Modular Security Systems

MSSSI STANDARDS

PROJECT NO: **M19-012**
PROJECT: **MAC1 - LITE**

NO.	DATE	BY	DESCRIPTION
F	2/27/2020	NSM	MANUFACTURING REVISION
E	2/21/2020	JOY	MANUFACTURING REVISION
D	11/11/2019	NSM	MANUFACTURING REVISION
C	8/26/2019	NSM	MANUFACTURING RELEASE
B	7/15/2019	NSM	PROTOTYPE REVISIONS

REVISIONS

TITLE: **GENERAL ARRANGEMENT**

DRAWN	CHECKED	ENG. APPR.	SALES APPR.	MFG. APPR.	O.A.	SCALE	DWG NO
NSM	JES	JES				3/4" = 1'-0"	M19-012-M1LX-0200

BY	DATE	COMMENTS:
NSM	1/18/2019	
JES	2/27/2020	
JES	2/27/2020	

TOLERANCES ON ALL DIMENSIONS UNLESS OTHERWISE NOTED SHALL BE:
 ONE PLACE DECIMAL ± 0.03
 THREE PLACE DECIMAL ± 0.005
 ANGULAR ± 1°

FINISH ALL SURFACES UNLESS OTHERWISE SPECIFIED.
 BREAK ALL SHARP EDGES UNLESS OTHERWISE SPECIFIED.

THE NUMBER IN THE FINISH SYMBOL IS THE MAXIMUM ACCEPTABLE ROUGHNESS VALUE IN A.A. MICRO-INCHES.