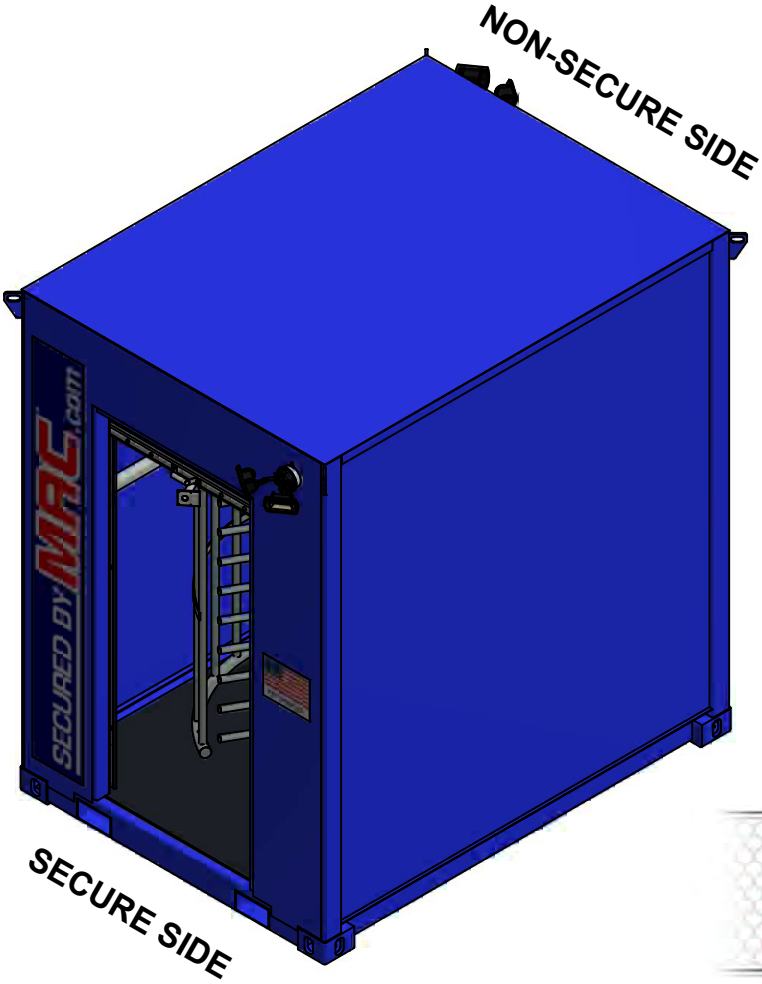
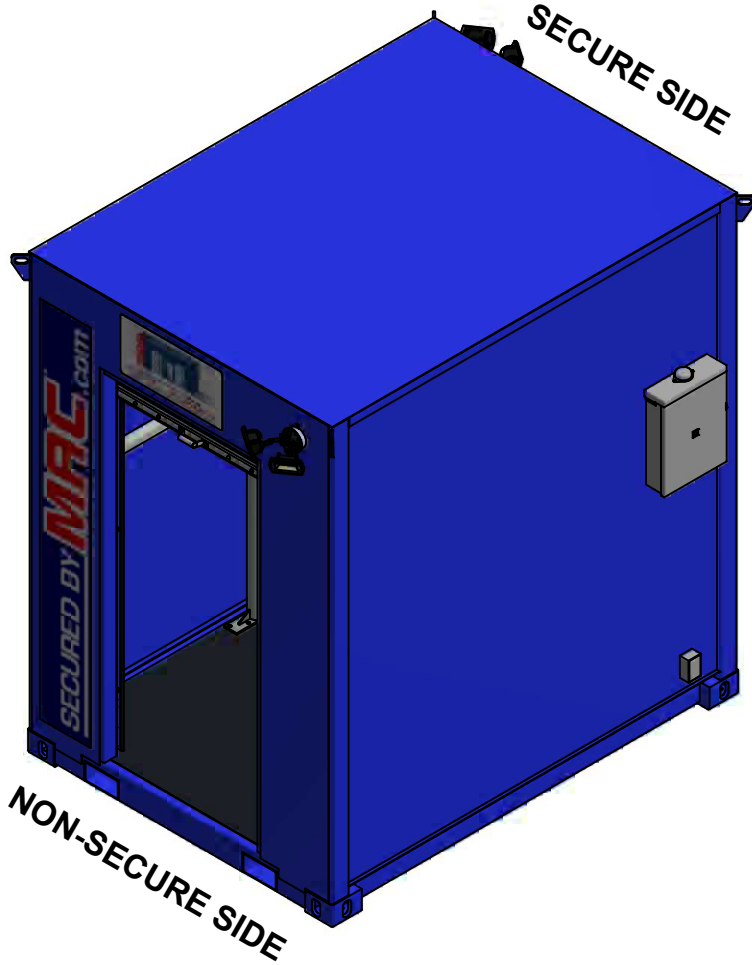



SECURED BY **MAC**.com

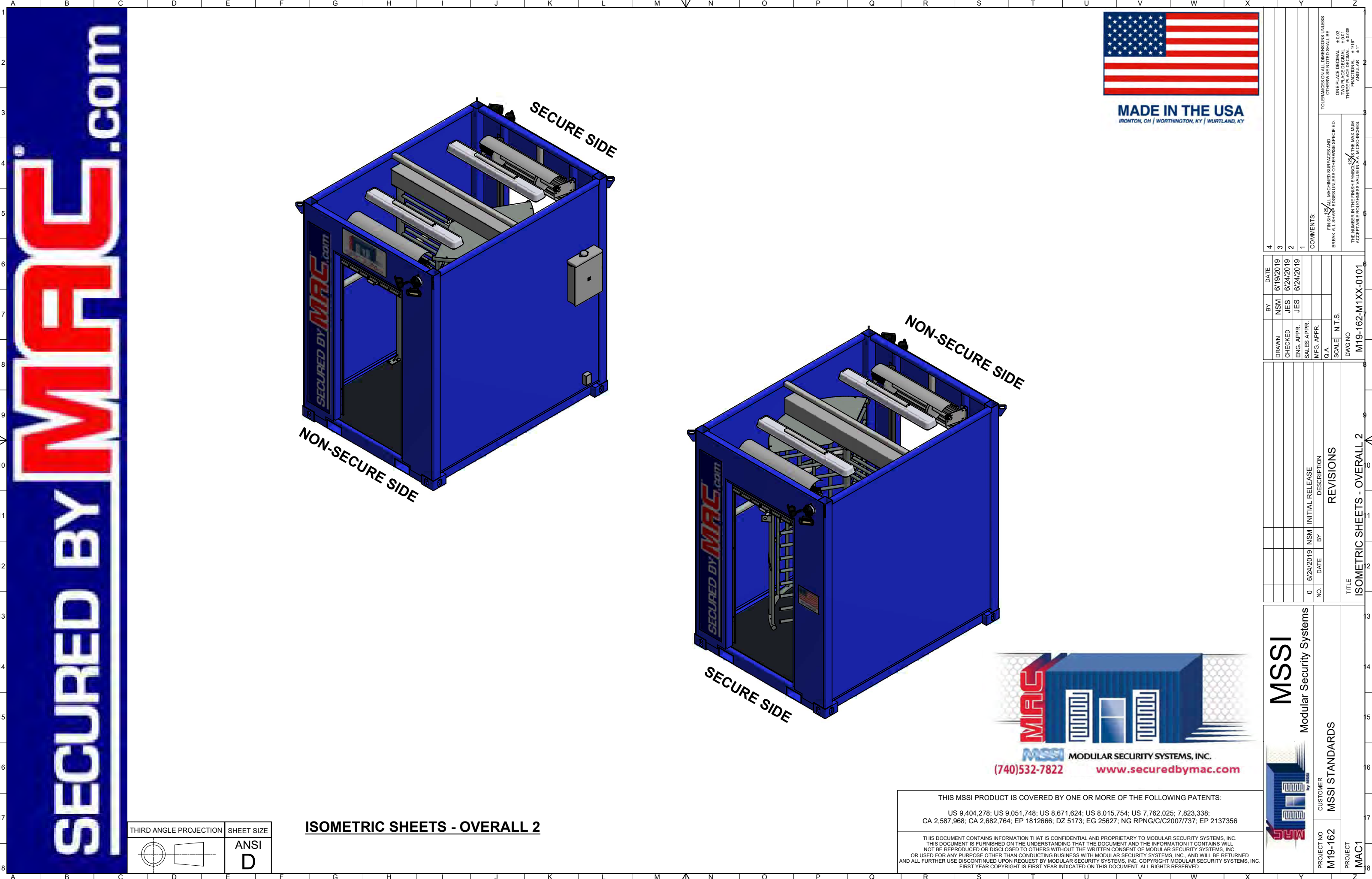


THIRD ANGLE PROJECTION	SHEET SIZE
	ANSI D

ISOMETRIC SHEETS - OVERALL 1

<p>THIS MSS1 PRODUCT IS COVERED BY ONE OR MORE OF THE FOLLOWING PATENTS:</p> <p>US 9,404,278; US 9,051,748; US 8,671,624; US 8,015,754; US 7,762,025; 7,823,338; CA 2,587,968; CA 2,682,764; EP 1812666; D2 5173; EG 25627; NG RPNG/C/C2007/737; EP 2137356</p>
<p>THIS DOCUMENT CONTAINS INFORMATION THAT IS CONFIDENTIAL AND PROPRIETARY TO MODULAR SECURITY SYSTEMS, INC. THIS DOCUMENT IS FURNISHED ON THE UNDERSTANDING THAT THE DOCUMENT AND THE INFORMATION IT CONTAINS WILL NOT BE REPRODUCED OR DISCLOSED TO OTHERS WITHOUT THE WRITTEN CONSENT OF MODULAR SECURITY SYSTEMS, INC. OR USED FOR ANY PURPOSE OTHER THAN CONDUCTING BUSINESS WITH MODULAR SECURITY SYSTEMS, INC., AND WILL BE RETURNED AND ALL FURTHER USE DISCONTINUED UPON REQUEST BY MODULAR SECURITY SYSTEMS, INC. COPYRIGHT MODULAR SECURITY SYSTEMS, INC. FIRST YEAR COPYRIGHT IS FIRST YEAR INDICATED ON THIS DOCUMENT. ALL RIGHTS RESERVED.</p>

[illegible]



SECURED BY **MAC**.com



THIS MSSI PRODUCT IS COVERED BY ONE OR MORE OF THE FOLLOWING PATENTS:

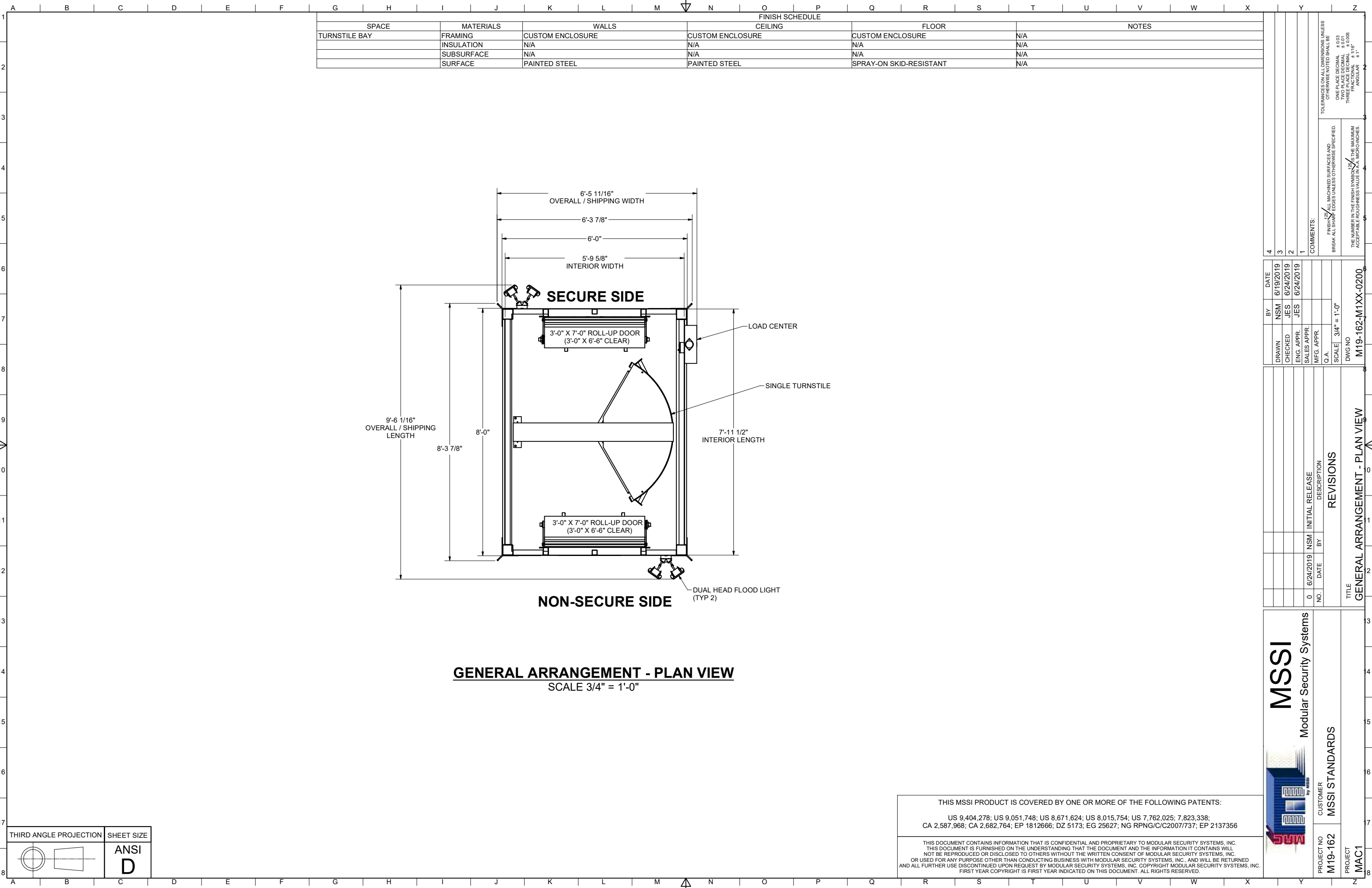
US 9,404,278; US 9,051,748; US 8,671,624; US 8,015,754; US 7,762,025; 7,823,338;
CA 2,587,968; CA 2,682,764; EP 1812666; DZ 5173; EG 25627; NG RPNG/C/C2007/737; EP 2137356

THIS DOCUMENT CONTAINS INFORMATION THAT IS CONFIDENTIAL AND PROPRIETARY TO MODULAR SECURITY SYSTEMS, INC. THIS DOCUMENT IS FURNISHED ON THE UNDERSTANDING THAT THE DOCUMENT AND THE INFORMATION IT CONTAINS WILL NOT BE REPRODUCED OR DISCLOSED TO OTHERS WITHOUT THE WRITTEN CONSENT OF MODULAR SECURITY SYSTEMS, INC. OR USED FOR ANY PURPOSE OTHER THAN CONDUCTING BUSINESS WITH MODULAR SECURITY SYSTEMS, INC. AND WILL BE RETURNED AND ALL FURTHER USE DISCONTINUED UPON REQUEST BY MODULAR SECURITY SYSTEMS, INC. COPYRIGHT MODULAR SECURITY SYSTEMS, INC. FIRST YEAR COPYRIGHT IS FIRST YEAR INDICATED ON THIS DOCUMENT. ALL RIGHTS RESERVED.

THIRD ANGLE PROJECTION	SHEET SIZE
	ANSI D

ISOMETRIC SHEETS - OVERALL 2

DRAWN		BY	DATE	4
CHECKED		NSM	6/19/2019	3
ENG. APPR.		JES	6/24/2019	2
SALES APPR.		JES	6/24/2019	1
MFG. APPR.				
Q.A.				
SCALE		N.T.S.		
DWG NO		M19-162-M1XX-0101		
TITLE		ISOMETRIC SHEETS - OVERALL 2		
PROJECT NO		M19-162		
CUSTOMER		MSSI STANDARDS		
PROJECT		MAC1		
MSSI		Modular Security Systems		
TOLERANCES ON ALL DIMENSIONS UNLESS OTHERWISE NOTED SHALL BE:				
ONE PLACE DECIMAL ±0.03				
THREE PLACE DECIMAL ±0.005				
ANGULAR ±1°				
COMMENTS:				
FINISH: ALL MOUNTED SURFACES AND BREAK ALL SHARP EDGES UNLESS OTHERWISE SPECIFIED.				
THE NUMBER IN THE FINISH SYMBOL IS THE MAXIMUM ACCEPTABLE ROUGHNESS VALUE IN 1/16" MICRO-INCHES.				



FINISH SCHEDULE					
SPACE	MATERIALS	WALLS	CEILING	FLOOR	NOTES
TURNSTILE BAY	FRAMING	CUSTOM ENCLOSURE	CUSTOM ENCLOSURE	CUSTOM ENCLOSURE	N/A
	INSULATION	N/A	N/A	N/A	N/A
	SUBSURFACE	N/A	N/A	N/A	N/A
	SURFACE	PAINTED STEEL	PAINTED STEEL	SPRAY-ON SKID-RESISTANT	N/A

4	DATE	6/19/2019
3	BY	NSM
2	CHECKED	JES
1	ENG. APPR.	JES
COMMENTS:	SALES APPR.	
	MFG. APPR.	
	Q.A.	
	SCALE	3/4" = 1'-0"
DWG NO		
M19-162-M1XX-0200		


TOLERANCES ON ALL DIMENSIONS UNLESS OTHERWISE NOTED SHALL BE:
ONE PLACE DECIMAL ± 0.03
TWO PLACE DECIMAL ± 0.015
THREE PLACE DECIMAL ± 0.006
ANGULAR ± 1°

FINISH 125/10 ALL MACHINED SURFACES AND BREAK ALL SHARP EDGES UNLESS OTHERWISE SPECIFIED.


THE NUMBER IN THE FINISH SYMBOL 125/10 IS THE MAXIMUM ACCEPTABLE ROUGHNESS VALUE IN 1/16" MICRO-INCHES.

DRAWN		DATE	6/19/2019
CHECKED		BY	NSM
ENG. APPR.		JES	6/24/2019
SALES APPR.			
MFG. APPR.			
Q.A.			
SCALE		3/4" = 1'-0"	
DWG NO		M19-162-M1XX-0200	

INITIAL RELEASE		DESCRIPTION
NO.		DATE
0	6/24/2019	NSM
REVISIONS		
TITLE		
GENERAL ARRANGEMENT - PLAN VIEW		



Modular Security Systems



by MSSI

CUSTOMER

MSSI STANDARDS

PROJECT NO

M19-162

PROJECT

MAC1

THIS MSSI PRODUCT IS COVERED BY ONE OR MORE OF THE FOLLOWING PATENTS:

US 9,404,278; US 9,051,748; US 8,671,624; US 8,015,754; US 7,762,025; 7,823,338;
CA 2,587,968; CA 2,682,764; EP 1812666; DZ 5173; EG 25627; NG RPNG/C/C2007/737; EP 2137356

THIS DOCUMENT CONTAINS INFORMATION THAT IS CONFIDENTIAL AND PROPRIETARY TO MODULAR SECURITY SYSTEMS, INC. THIS DOCUMENT IS FURNISHED ON THE UNDERSTANDING THAT THE DOCUMENT AND THE INFORMATION IT CONTAINS WILL NOT BE REPRODUCED OR DISCLOSED TO OTHERS WITHOUT THE WRITTEN CONSENT OF MODULAR SECURITY SYSTEMS, INC. OR USED FOR ANY PURPOSE OTHER THAN CONDUCTING BUSINESS WITH MODULAR SECURITY SYSTEMS, INC. AND WILL BE RETURNED AND ALL FURTHER USE DISCONTINUED UPON REQUEST BY MODULAR SECURITY SYSTEMS, INC. COPYRIGHT MODULAR SECURITY SYSTEMS, INC. FIRST YEAR COPYRIGHT IS FIRST YEAR INDICATED ON THIS DOCUMENT. ALL RIGHTS RESERVED.