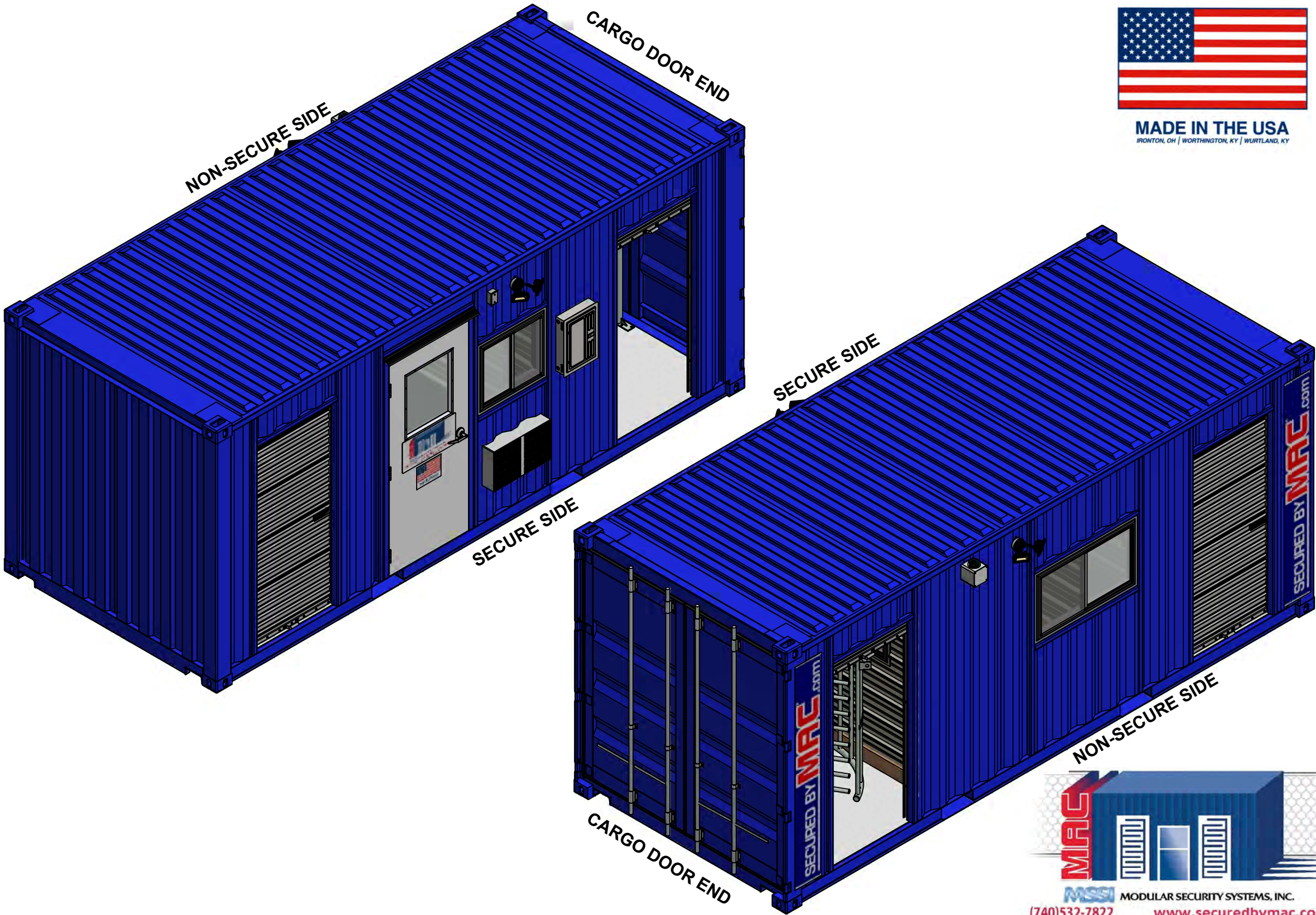


SECURED BY **MAC**.com



MADE IN THE USA
IRONTON, OH | WORTHINGTON, KY | WURLTAND, KY

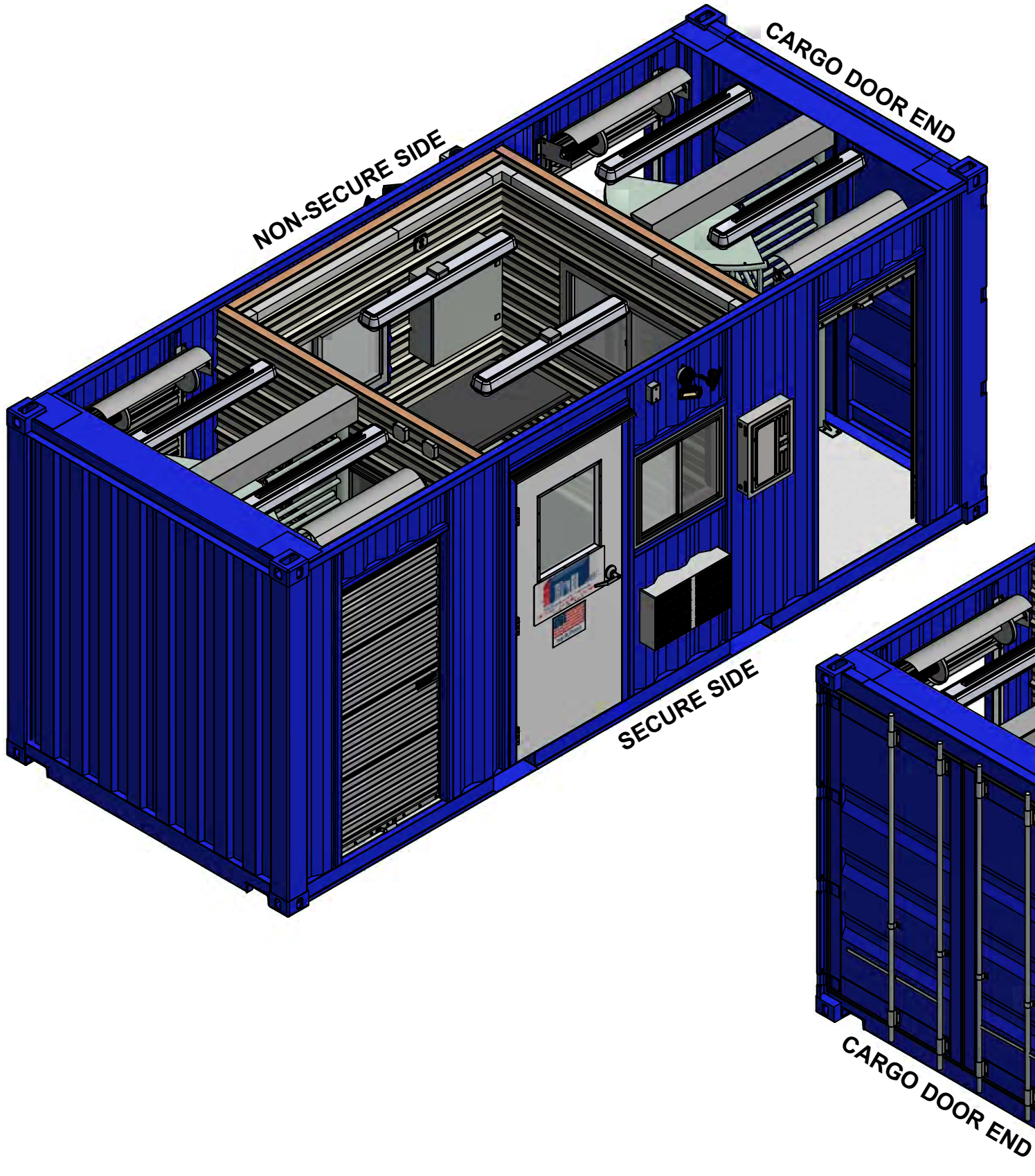
THIRD ANGLE PROJECTION	SHEET SIZE
	ANSI D

ISOMETRIC SHEETS - OVERALL 1

THIS MSSI PRODUCT IS COVERED BY ONE OR MORE OF THE FOLLOWING PATENTS: US 9,404,278; US 9,051,748; US 8,671,624; US 8,015,754; US 7,762,025; 7,823,338; CA 2,587,968; CA 2,682,764; EP 1812666; DZ 5173; EG 25627; NG RPNG/C/C2007/737; EP 2137356	
THIS DOCUMENT CONTAINS INFORMATION THAT IS CONFIDENTIAL AND PROPRIETARY TO MODULAR SECURITY SYSTEMS, INC. THIS DOCUMENT IS FURNISHED ON THE UNDERSTANDING THAT THE DOCUMENT AND THE INFORMATION IT CONTAINS WILL NOT BE REPRODUCED OR DISCLOSED TO OTHERS WITHOUT THE WRITTEN CONSENT OF MODULAR SECURITY SYSTEMS, INC. OR USED FOR ANY PURPOSE OTHER THAN CONDUCTING BUSINESS WITH MODULAR SECURITY SYSTEMS, INC. AND WILL BE RETURNED AND ALL FURTHER USE DISCONTINUED UPON REQUEST BY MODULAR SECURITY SYSTEMS, INC. COPYRIGHT MODULAR SECURITY SYSTEMS, INC. FIRST YEAR COPYRIGHT IS FIRST YEAR INDICATED ON THIS DOCUMENT. ALL RIGHTS RESERVED.	

C 4/16/2018 REA MANUFACTURING UPDATES		BY	DATE	4
B 1/19/2018 NSM UPDATED PRE-HUNG DOOR FRAME		NSM	9/8/2017	3
A 12/1/2017 JES MANUFACTURING REVIEW		JES	4/16/2018	2
O 11/15/2017 NSM INITIAL RELEASE		JES	4/16/2018	1
NO. DATE BY		SALES APPR.		
		MFG. APPR.		
		Q.A.		
		SCALE	N.T.S.	
		DWG NO		
			M17-278-M2MX-0100	
C 4/16/2018 REA MANUFACTURING UPDATES		COMMENTS:		
B 1/19/2018 NSM UPDATED PRE-HUNG DOOR FRAME		FINISHES: ALL MOUNTED SURFACES AND BREAK ALL SHARP EDGES UNLESS OTHERWISE SPECIFIED.		
A 12/1/2017 JES MANUFACTURING REVIEW		TOLERANCES ON ALL DIMENSIONS UNLESS OTHERWISE NOTED SHALL BE:		
O 11/15/2017 NSM INITIAL RELEASE		ONE PLACE DECIMAL ±0.03		
		THREE PLACE DECIMAL ±0.005		
		ANGULAR ±1/16"		
		THE NUMBER IN THE FINISH SYMBOL IS THE MAXIMUM ACCEPTABLE ROUGHNESS VALUE IN A.A. MICRO-INCHES.		
TITLE		ISOMETRIC SHEETS - OVERALL 1		
PROJECT NO		M17-278		
CUSTOMER		MSSI STANDARDS		
PROJECT		MAC2 - OFFICE IN MIDDLE		

SECURED BY **MAC**.com



MADE IN THE USA
IRONTON, OH | WORTHINGTON, KY | WURLTAND, KY




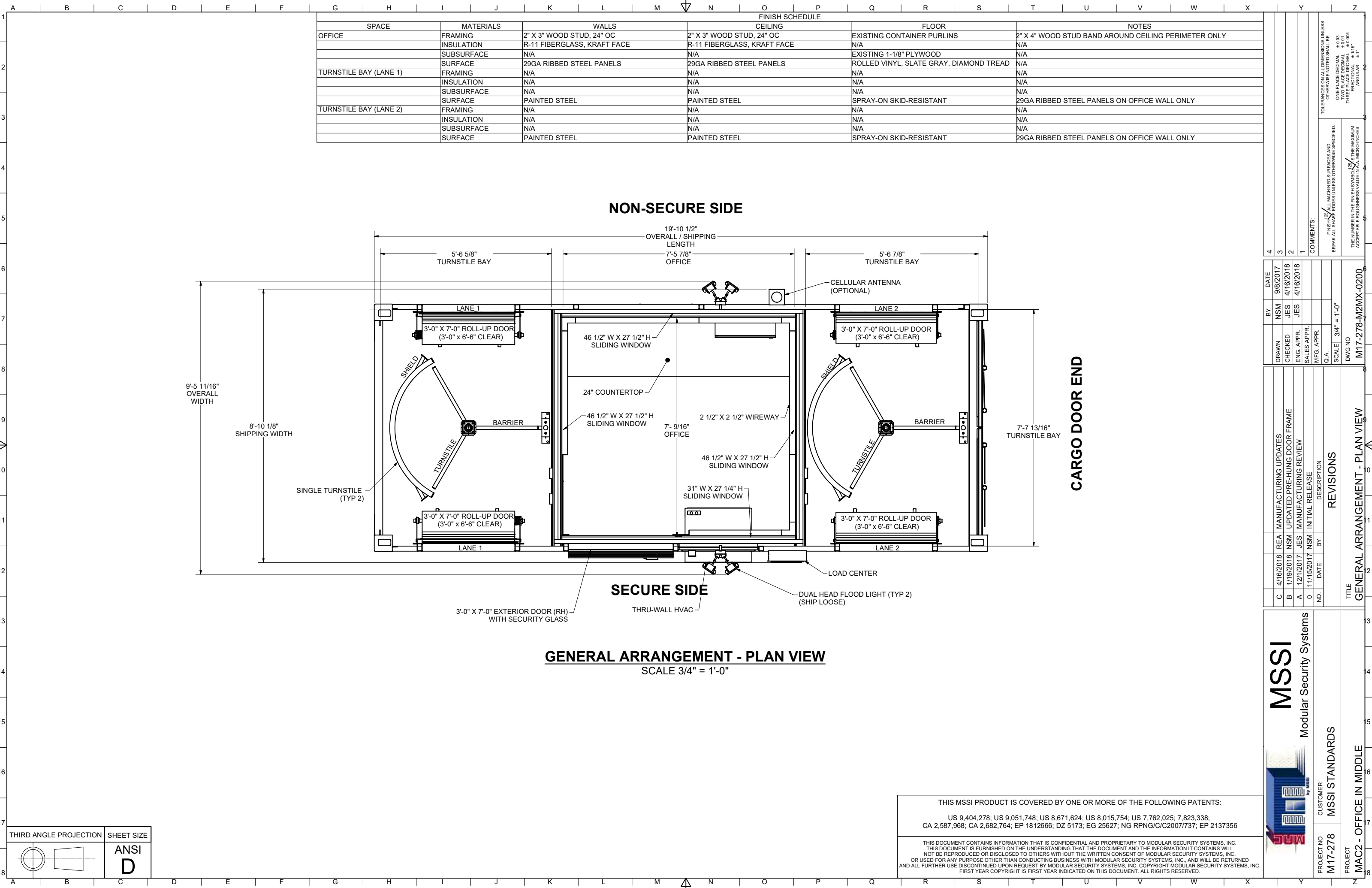
THIRD ANGLE PROJECTION	SHEET SIZE
	ANSI D

ISOMETRIC SHEETS - OVERALL 2

THIS MSSI PRODUCT IS COVERED BY ONE OR MORE OF THE FOLLOWING PATENTS:
US 9,404,278; US 9,051,748; US 8,671,624; US 8,015,754; US 7,762,025; 7,823,338;
CA 2,587,968; CA 2,682,764; EP 1812666; DZ 5173; EG 25627; NG RPNG/C/C2007/737; EP 2137356

THIS DOCUMENT CONTAINS INFORMATION THAT IS CONFIDENTIAL AND PROPRIETARY TO MODULAR SECURITY SYSTEMS, INC. THIS DOCUMENT IS FURNISHED ON THE UNDERSTANDING THAT THE DOCUMENT AND THE INFORMATION IT CONTAINS WILL NOT BE REPRODUCED OR DISCLOSED TO OTHERS WITHOUT THE WRITTEN CONSENT OF MODULAR SECURITY SYSTEMS, INC. OR USED FOR ANY PURPOSE OTHER THAN CONDUCTING BUSINESS WITH MODULAR SECURITY SYSTEMS, INC. AND WILL BE RETURNED AND ALL FURTHER USE DISCONTINUED UPON REQUEST BY MODULAR SECURITY SYSTEMS, INC. COPYRIGHT MODULAR SECURITY SYSTEMS, INC. FIRST YEAR COPYRIGHT IS FIRST YEAR INDICATED ON THIS DOCUMENT. ALL RIGHTS RESERVED.

<div><div>MSSI Modular Security Systems</div></div>					PROJECT NO M17-278					CUSTOMER MSSI STANDARDS					PROJECT MAC2 - OFFICE IN MIDDLE				
C					4/16/2018	REA	MANUFACTURING UPDATES					TITLE ISOMETRIC SHEETS - OVERALL 2							
B					1/19/2018	NSM	UPDATED PRE-HUNG DOOR FRAME					REVISIONS							
A					12/1/2017	JES	MANUFACTURING REVIEW					DESCRIPTION							
O					11/15/2017	NSM	INITIAL RELEASE					SCALE							
NO.		DATE		BY							N.T.S.								
											DWG NO								
											M17-278-M2MX-0101								
											BY								
											DATE								
											9/8/2017								
											NSM								
											JES								
											4/16/2018								
											JES								
											4/16/2018								
											JES								
											4/16/2018								
											JES								
											4/16/2018								
											JES								
											4/16/2018								
											JES								
											4/16/2018								
											JES								
											4/16/2018								
											JES								
											4/16/2018								
											JES								
											4/16/2018								
											JES								
											4/16/2018								
											JES								
											4/16/2018								
											JES								
											4/16/2018								
											JES								
											4/16/2018								
											JES								
											4/16/2018								
											JES								
											4/16/2018								
											JES								
											4/16/2018								
											JES								
											4/16/2018								
											JES								
											4/16/2018								
											JES								
											4/16/2018								
											JES								
											4/16/2018								
											JES								
											4/16/2018								
											JES								
											4/16/2018								
											JES								
											4/16/2018								
											JES								
											4/16/2018								
											JES								
											4/16/2018								
											JES								
											4/16/2018								
											JES								
											4/16/2018								
											JES								
											4/16/2018								
											JES								
											4/16/2018								
											JES								
											4/16/2018								
											JES								
											4/16/2018								
											JES								
											4/16/2018								
											JES								
											4/16/2018								
											JES								
											4/16/2018								
											JES								
											4/16/2018								
											JES								
											4/16/2018								
											JES								
											4/16/2018								
											JES								
											4/16/2018								
											JES								
											4/16/2018								
											JES								
											4/16/2018								
											JES								
											4/16/2018								
											JES								
											4/16/2018								
											JES								
											4/16/2018								
											JES								
											4/16/2018								
											JES								
											4/16/2018								
											JES								
											4/16/2018								
											JES								
											4/16/2018								
											JES								
											4/16/2018								
											JES								
											4/16/2018								
											JES								
											4/16/2018								
											JES								
											4/16/2018								
											JES								



THIRD ANGLE PROJECTION	SHEET SIZE
	ANSI D

THIS MSSI PRODUCT IS COVERED BY ONE OR MORE OF THE FOLLOWING PATENTS:

US 9,404,278; US 9,051,748; US 8,671,624; US 8,015,754; US 7,762,025; 7,823,338;
CA 2,587,968; CA 2,682,764; EP 1812666; DZ 5173; EG 25627; NG RPNG/C/C2007/737; EP 2137356

THIS DOCUMENT CONTAINS INFORMATION THAT IS CONFIDENTIAL AND PROPRIETARY TO MODULAR SECURITY SYSTEMS, INC. THIS DOCUMENT IS FURNISHED ON THE UNDERSTANDING THAT THE DOCUMENT AND THE INFORMATION IT CONTAINS WILL NOT BE REPRODUCED OR DISCLOSED TO OTHERS WITHOUT THE WRITTEN CONSENT OF MODULAR SECURITY SYSTEMS, INC. OR USED FOR ANY PURPOSE OTHER THAN CONDUCTING BUSINESS WITH MODULAR SECURITY SYSTEMS, INC. AND WILL BE RETURNED AND ALL FURTHER USE DISCONTINUED UPON REQUEST BY MODULAR SECURITY SYSTEMS, INC. COPYRIGHT MODULAR SECURITY SYSTEMS, INC. FIRST YEAR COPYRIGHT IS FIRST YEAR INDICATED ON THIS DOCUMENT. ALL RIGHTS RESERVED.

MSSI Modular Security Systems		CUSTOMER MSSI STANDARDS		PROJECT NO M17-278		PROJECT MAC2 - OFFICE IN MIDDLE	
REVISIONS		DATE		BY		DESCRIPTION	
C	4/16/2018	REA	MANUFACTURING UPDATES	NSM	9/8/2017	DATE	
B	1/19/2018	NSM	UPDATED PRE-HUNG DOOR FRAME	JES	4/16/2018	CHECKED	
A	12/1/2017	JES	MANUFACTURING REVIEW	JES	4/16/2018	ENG. APPR.	
0	11/15/2017	NSM	INITIAL RELEASE			SALES APPR.	
		NO.		DATE		MFG. APPR.	
						Q.A.	
						SCALE	3/4" = 1'-0"
						DWG NO	M17-278-M2MX-0200
						TOLERANCES ON ALL DIMENSIONS UNLESS OTHERWISE NOTED SHALL BE: ONE PLACE DECIMAL ± 0.03 TWO PLACE DECIMAL ± 0.015 THREE PLACE DECIMAL ± 0.006 ANGULAR ± 1°	
						THE NUMBER IN THE FINISH SYMBOL $\frac{12}{16}$ IS THE MAXIMUM ACCEPTABLE ROUGHNESS VALUE IN 1/16" MICRO-INCHES.	
						COMMENTS: FINISH 12/16" ALL UNPAINTED SURFACES AND BREAK ALL SHARP EDGES UNLESS OTHERWISE SPECIFIED.	
						TOLERANCES ON ALL DIMENSIONS UNLESS OTHERWISE NOTED SHALL BE: ONE PLACE DECIMAL ± 0.03 TWO PLACE DECIMAL ± 0.015 THREE PLACE DECIMAL ± 0.006 ANGULAR ± 1°	