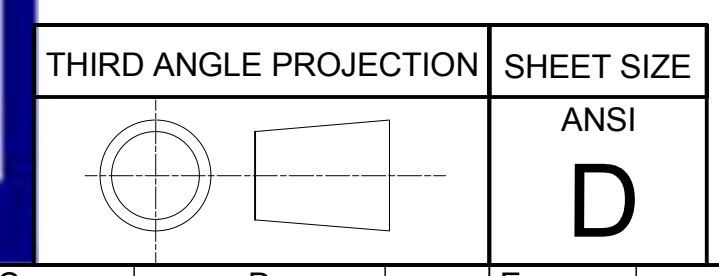
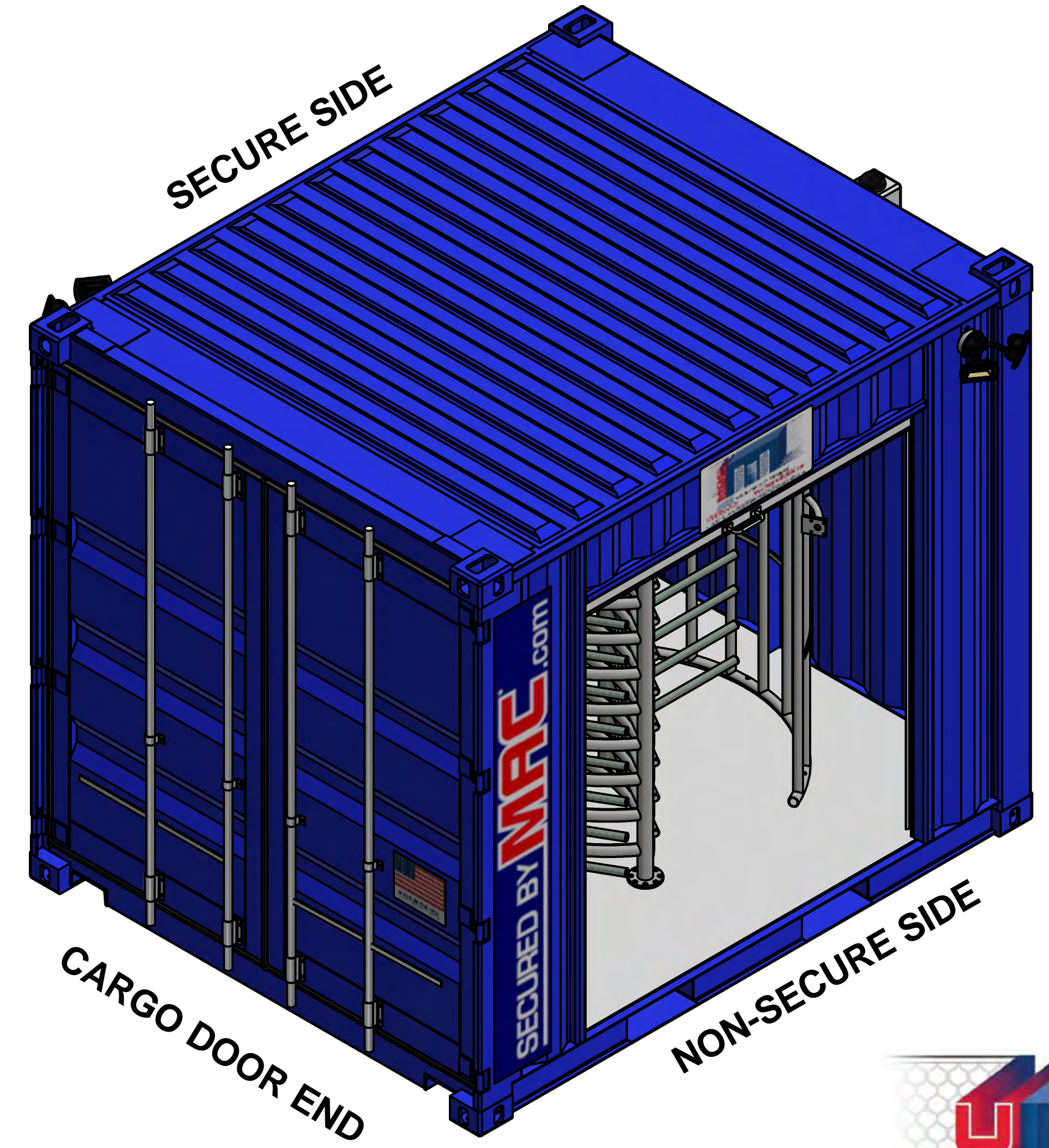
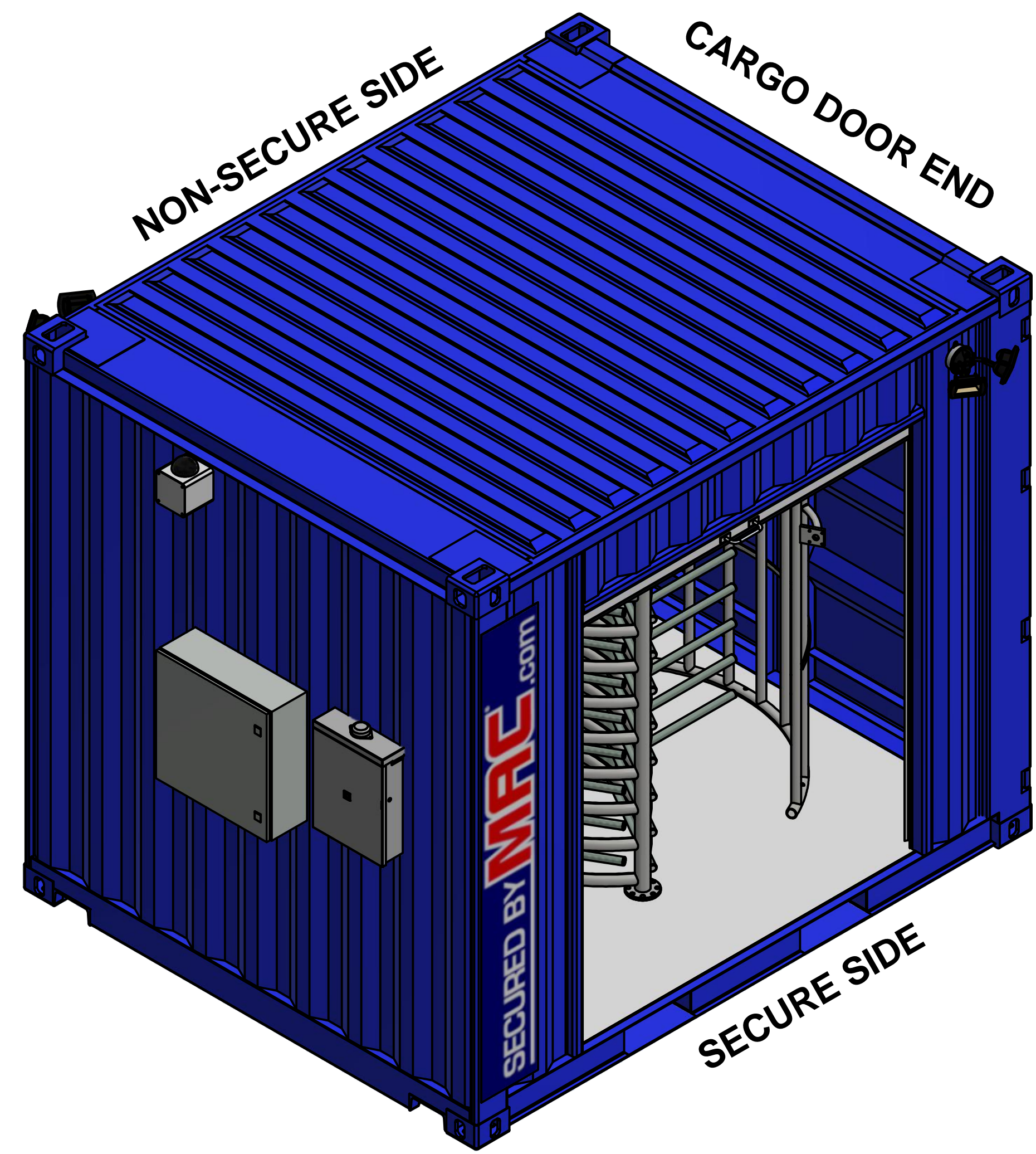


SECURED BY MAC.com



ISOMETRIC SHEETS - OVERALL 2

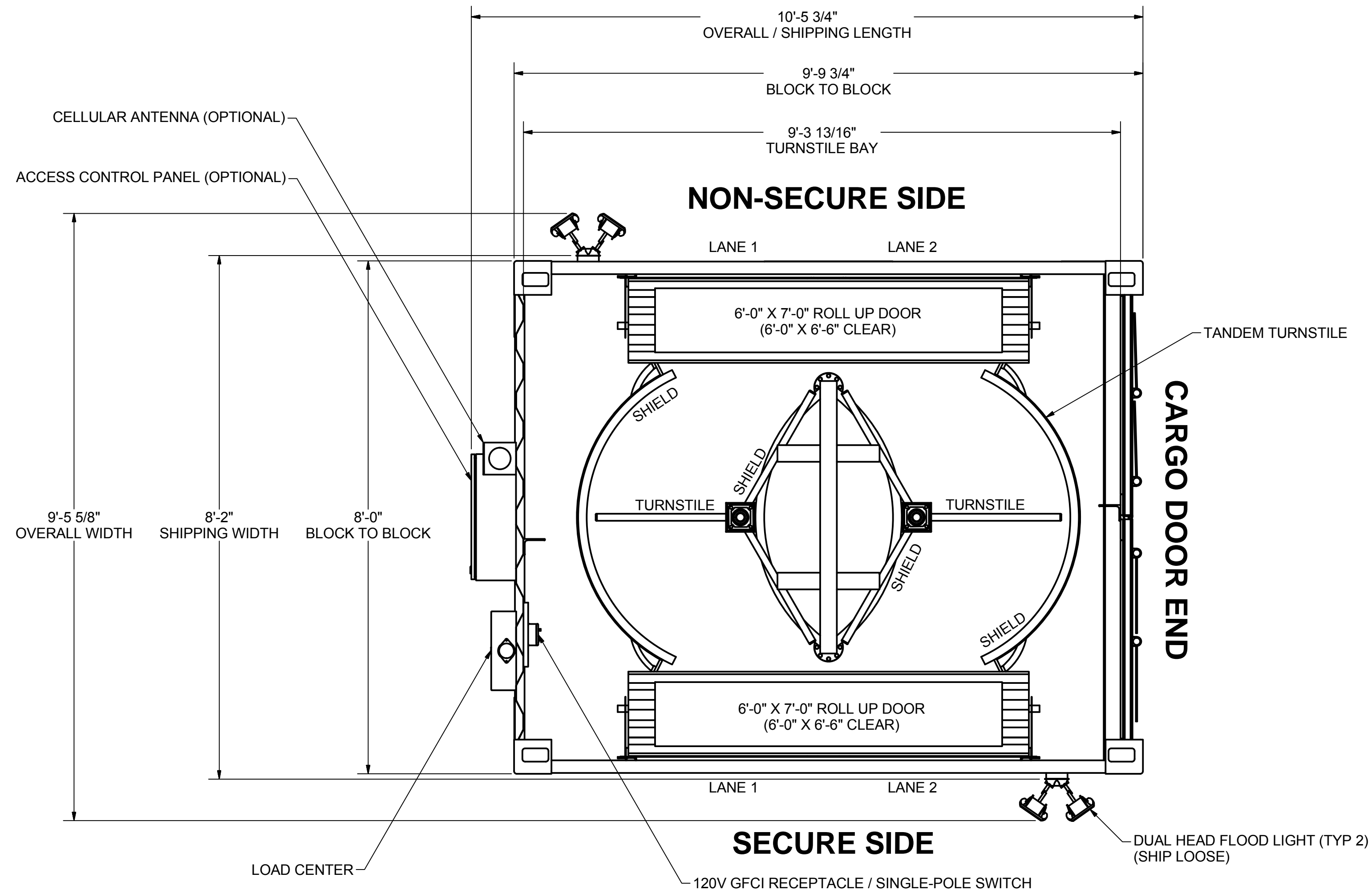


THIS MSSI PRODUCT IS COVERED BY ONE OR MORE OF THE FOLLOWING PATENTS:
 US 9,404,278; US 9,051,748; US 8,671,624; US 8,015,754; US 7,762,025; 7,823,338;
 CA 2,587,968; CA 2,682,764; EP 1812666; DZ 5173; EG 25627; NG RPNG/C/C2007/737; EP 2137356

THIS DOCUMENT CONTAINS INFORMATION THAT IS CONFIDENTIAL AND PROPRIETARY TO MODULAR SECURITY SYSTEMS, INC. THIS DOCUMENT IS FURNISHED ON THE UNDERSTANDING THAT THE DOCUMENT AND THE INFORMATION IT CONTAINS WILL NOT BE REPRODUCED OR DISCLOSED TO OTHERS WITHOUT THE WRITTEN CONSENT OF MODULAR SECURITY SYSTEMS, INC. OR USED FOR ANY PURPOSE OTHER THAN CONDUCTING BUSINESS WITH MODULAR SECURITY SYSTEMS, INC., AND WILL BE RETURNED AND ALL FURTHER USE DISCONTINUED UPON REQUEST BY MODULAR SECURITY SYSTEMS, INC. COPYRIGHT MODULAR SECURITY SYSTEMS, INC. FIRST YEAR COPYRIGHT IS FIRST YEAR INDICATED ON THIS DOCUMENT. ALL RIGHTS RESERVED.

TOLERANCES ON ALL DIMENSIONS UNLESS OTHERWISE NOTED SHALL BE: ONE PLACE DECIMAL ± 0.03 TWO PLACE DECIMAL ± 0.005 THREE PLACE DECIMAL ± 0.005 ANGULAR ± 1°	
COMMENTS:	FINISH ALL MACHINED SURFACES AND BREAK ALL SHARP EDGES UNLESS OTHERWISE SPECIFIED.
THE NUMBER IN THE FINISH SYMBOL IS THE MAXIMUM ACCEPTABLE ROUGHNESS VALUE IN A.A. MICRO-INCHES.	
BY	DATE
BLM 12/14/2017	12/14/2017
JES 12/20/2017	12/20/2017
JES 12/20/2017	12/20/2017
DRAWN	DATE
BLM 12/14/2017	12/14/2017
CHECKED	DATE
JES 12/20/2017	12/20/2017
ENG. APPR.	DATE
JES 12/20/2017	12/20/2017
SALES APPR.	DATE
MFG. APPR.	DATE
O.A.	
SCALE	N.T.S.
DWG NO	M17-341-M2TX-0101
TITLE	
ISOMETRIC SHEETS - OVERALL 2	
REVISIONS	
NO.	DATE
0	12/20/2017
BLM	INITIAL RELEASE
BY	DESCRIPTION
MSSI	
Modular Security Systems	
CUSTOMER	MSSI STANDARDS
PROJECT NO	M17-341
PROJECT	MAC2T

FINISH SCHEDULE		FINISH SCHEDULE		FINISH SCHEDULE		FINISH SCHEDULE	
SPACE	MATERIALS	WALLS	CEILING	FLOOR	NOTES		
TURNSTILE BAY	FRAMING	N/A	N/A	EXISTING CONTAINER PURLINS	N/A		
	INSULATION	N/A	N/A	N/A	N/A		
	SUBSURFACE	N/A	N/A	EXISTING 1-1/8" PLYWOOD	N/A		
	SURFACE	PAINTED STEEL	PAINTED STEEL	SPRAY-ON SKID-RESISTANT	N/A		



GENERAL ARRANGEMENT- PLAN VIEW
SCALE 3/4" = 1'-0"

DATE	BY	DESCRIPTION
12/14/2017	BLM	DRAWN
12/20/2017	JES	CHECKED
12/20/2017	JES	ENG. APPR.
12/20/2017	JES	SALES APPR.
		MFG. APPR.
		O.A.
		SCALE 3/4" = 1'-0"
		DWG NO. M17-341-M2TX-0200

NO.	DATE	BY	DESCRIPTION
0	12/20/2017	BLM	INITIAL RELEASE

REVISIONS	
NO.	DESCRIPTION
GENERAL ARRANGEMENT - PLAN VIEW	

MSSI
Modular Security Systems

MSS
by **ANSI**

CUSTOMER: MSSI STANDARDS

PROJECT NO: M17-341

PROJECT: MAC2T

TOLERANCES ON ALL DIMENSIONS UNLESS OTHERWISE NOTED SHALL BE:
ONE PLACE DECIMAL ± 0.03
TWO PLACE DECIMAL ± 0.005
THREE PLACE DECIMAL ± 0.005
ANGULAR ± 1°

FINISH ALL MACHINED SURFACES AND BREAK ALL SHARP EDGES UNLESS OTHERWISE SPECIFIED.
THE NUMBER IN THE FINISH SYMBOL IS THE MAXIMUM ACCEPTABLE ROUGHNESS VALUE IN A.A. MICRO-INCHES.

THIS MSSI PRODUCT IS COVERED BY ONE OR MORE OF THE FOLLOWING PATENTS:
US 9,404,278; US 9,051,748; US 8,671,624; US 8,015,754; US 7,762,025; 7,823,338;
CA 2,587,968; CA 2,682,764; EP 1812666; DZ 5173; EG 25627; NG RPNG/C/C2007/737; EP 2137356

THIS DOCUMENT CONTAINS INFORMATION THAT IS CONFIDENTIAL AND PROPRIETARY TO MODULAR SECURITY SYSTEMS, INC. THIS DOCUMENT IS FURNISHED ON THE UNDERSTANDING THAT THE DOCUMENT AND THE INFORMATION IT CONTAINS WILL NOT BE REPRODUCED OR DISCLOSED TO OTHERS WITHOUT THE WRITTEN CONSENT OF MODULAR SECURITY SYSTEMS, INC. OR USED FOR ANY PURPOSE OTHER THAN CONDUCTING BUSINESS WITH MODULAR SECURITY SYSTEMS, INC., AND WILL BE RETURNED AND ALL FURTHER USE DISCONTINUED UPON REQUEST BY MODULAR SECURITY SYSTEMS, INC. COPYRIGHT MODULAR SECURITY SYSTEMS, INC. FIRST YEAR COPYRIGHT IS FIRST YEAR INDICATED ON THIS DOCUMENT. ALL RIGHTS RESERVED.

THIRD ANGLE PROJECTION

SHEET SIZE

ANSI D