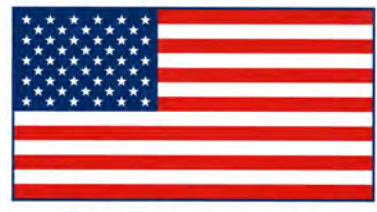
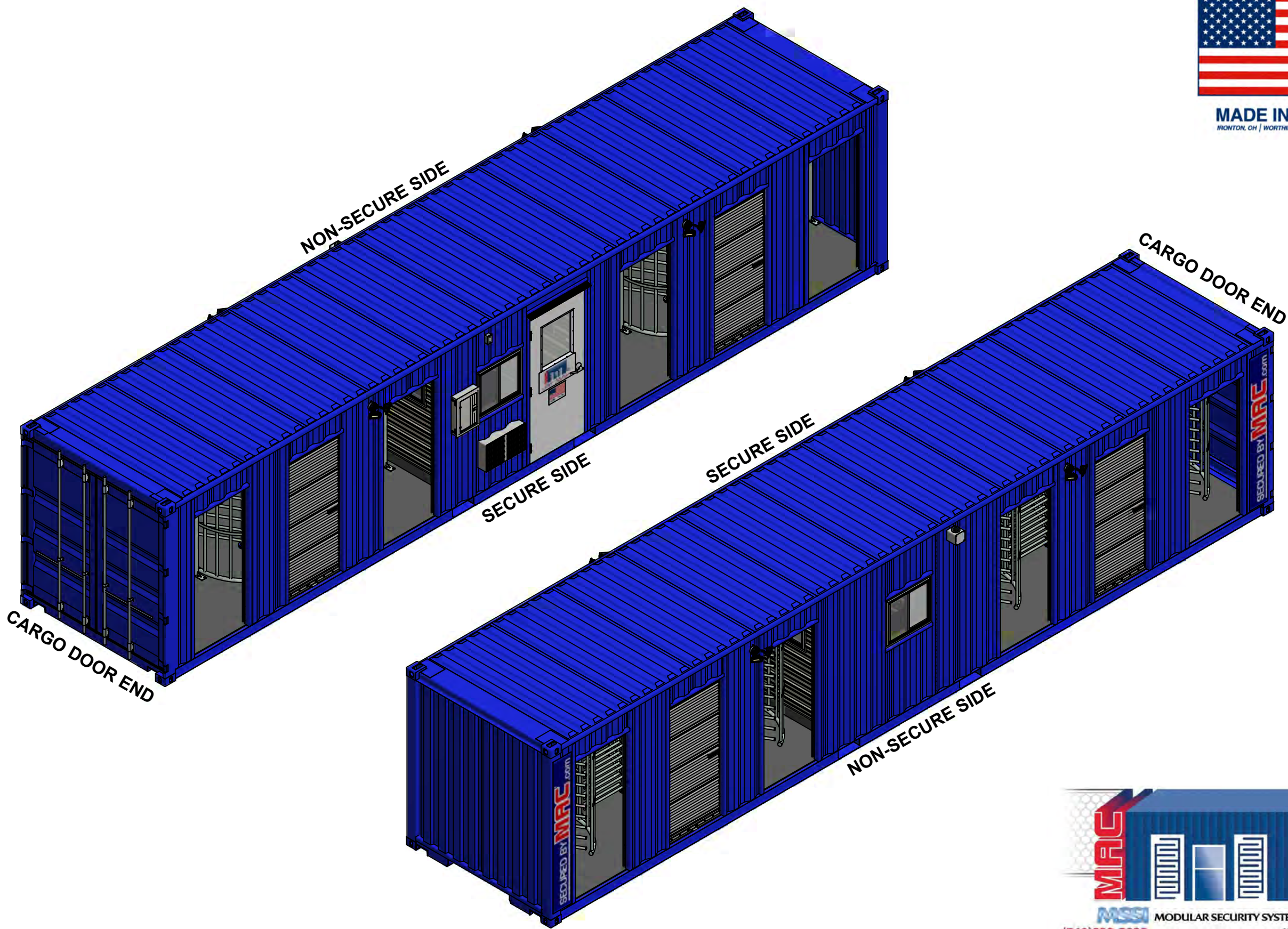
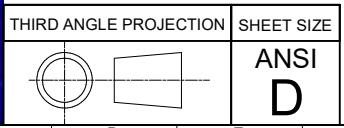


SECURED BY MAC.com



MADE IN THE USA
IRONTON, OH | WORTHINGTON, KY | WURLAND, KY



ISOMETRIC SHEETS - OVERALL 1

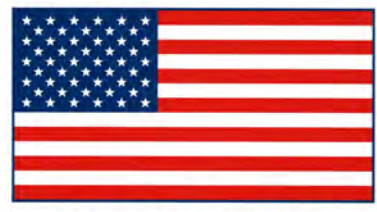
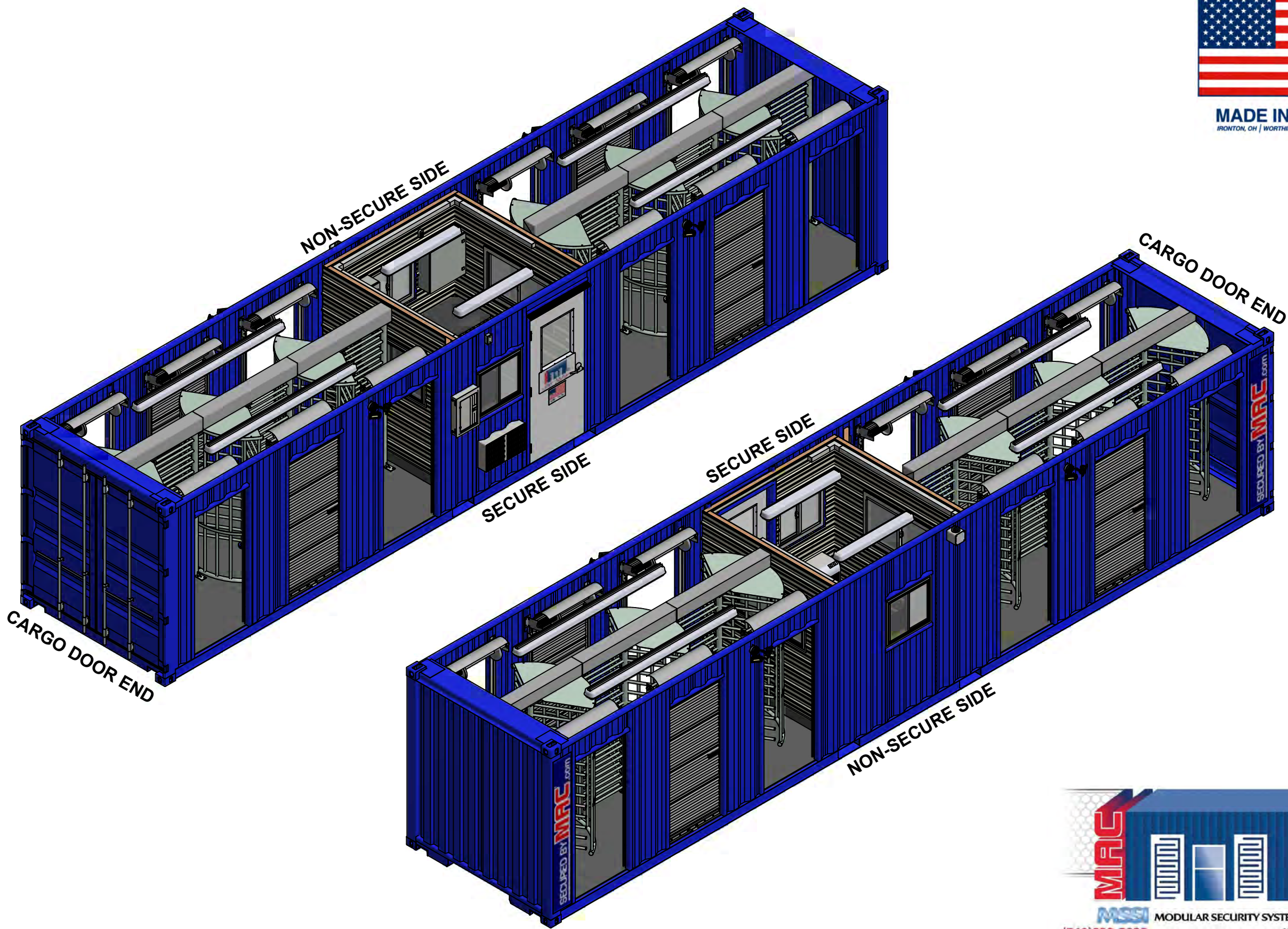


THIS MSSI PRODUCT IS COVERED BY ONE OR MORE OF THE FOLLOWING PATENTS:
 US 9,404,278; US 9,051,748; US 8,671,624; US 8,015,754; US 7,762,025; 7,823,338;
 CA 2,587,968; CA 2,682,764; EP 1812666; DZ 5173; EG 25627; NG RPNG/C/C2007/737; EP 2137356

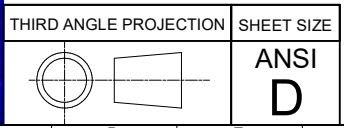
THIS DOCUMENT CONTAINS INFORMATION THAT IS CONFIDENTIAL AND PROPRIETARY TO MODULAR SECURITY SYSTEMS, INC. THIS DOCUMENT IS FURNISHED ON THE UNDERSTANDING THAT THE DOCUMENT AND THE INFORMATION IT CONTAINS WILL NOT BE REPRODUCED OR DISCLOSED TO OTHERS WITHOUT THE WRITTEN CONSENT OF MODULAR SECURITY SYSTEMS, INC. OR USED FOR ANY PURPOSE OTHER THAN CONDUCTING BUSINESS WITH MODULAR SECURITY SYSTEMS, INC. AND WILL BE RETURNED AND ALL FURTHER USE DISCONTINUED UPON REQUEST BY MODULAR SECURITY SYSTEMS, INC. COPYRIGHT MODULAR SECURITY SYSTEMS, INC. FIRST YEAR COPYRIGHT IS FIRST YEAR INDICATED ON THIS DOCUMENT. ALL RIGHTS RESERVED.

PROJECT NO M18-001		CUSTOMER MSSI STANDARDS		PROJECT MAC6 - OFFICE IN MIDDLE	
TITLE ISOMETRIC SHEETS - OVERALL 1		REVISIONS		SCALE N.T.S.	
NO.		DATE		DESCRIPTION	
0		1/19/2018		REVISION	
A		2/22/2018		REVISION	
B		4/17/2018		REVISION	
DRAWN		DATE		DWG NO	
CHECKED		DATE		M18-001-M6MX-0100	
ENG. APPR.		DATE		SCALE	
SALES APPR.		DATE		N.T.S.	
MFG. APPR.		DATE		BY	
O.A.		DATE		TH	
COMMENTS:		DATE		BY	
1		2/21/2018		IBH	
2		4/17/2018		JES	
3		4/17/2018		JES	
4		1/4/2018		REA	
TOLERANCES UNLESS NOTED SHALL BE:		FINISHES UNLESS NOTED SHALL BE:		THE NUMBER IN THE FINISH SYMBOL IS THE MAXIMUM ACCEPTABLE ROUNDNESS VALUE IN A. MICROINCHES.	
ONE PLACE DECIMAL ± 0.03		BREAK ALL SHARP EDGES UNLESS OTHERWISE SPECIFIED.		125	
THREE PLACE DECIMAL ± 0.005				125	
ANGULAR ± 1/16"				125	
				125	

MFC.com
 SECURED BY MFC



MADE IN THE USA
 IRONTON, OH | WORTHINGTON, KY | WURLAND, KY



ISOMETRIC SHEETS - OVERALL 2

MFC
 MSSI MODULAR SECURITY SYSTEMS, INC.
 (740)532-7822 www.securedbymac.com

THIS MSSI PRODUCT IS COVERED BY ONE OR MORE OF THE FOLLOWING PATENTS:
 US 9,404,278; US 9,051,748; US 8,671,624; US 8,015,754; US 7,762,025; 7,823,338;
 CA 2,587,968; CA 2,682,764; EP 1812666; DZ 5173; EG 25627; NG RPNG/C/C2007/737; EP 2137356

THIS DOCUMENT CONTAINS INFORMATION THAT IS CONFIDENTIAL AND PROPRIETARY TO MODULAR SECURITY SYSTEMS, INC. THIS DOCUMENT IS FURNISHED ON THE UNDERSTANDING THAT THE DOCUMENT AND THE INFORMATION IT CONTAINS WILL NOT BE REPRODUCED OR DISCLOSED TO OTHERS WITHOUT THE WRITTEN CONSENT OF MODULAR SECURITY SYSTEMS, INC. OR USED FOR ANY PURPOSE OTHER THAN CONDUCTING BUSINESS WITH MODULAR SECURITY SYSTEMS, INC. AND WILL BE RETURNED AND ALL FURTHER USE DISCONTINUED UPON REQUEST BY MODULAR SECURITY SYSTEMS, INC. COPYRIGHT MODULAR SECURITY SYSTEMS, INC. FIRST YEAR COPYRIGHT IS FIRST YEAR INDICATED ON THIS DOCUMENT. ALL RIGHTS RESERVED.

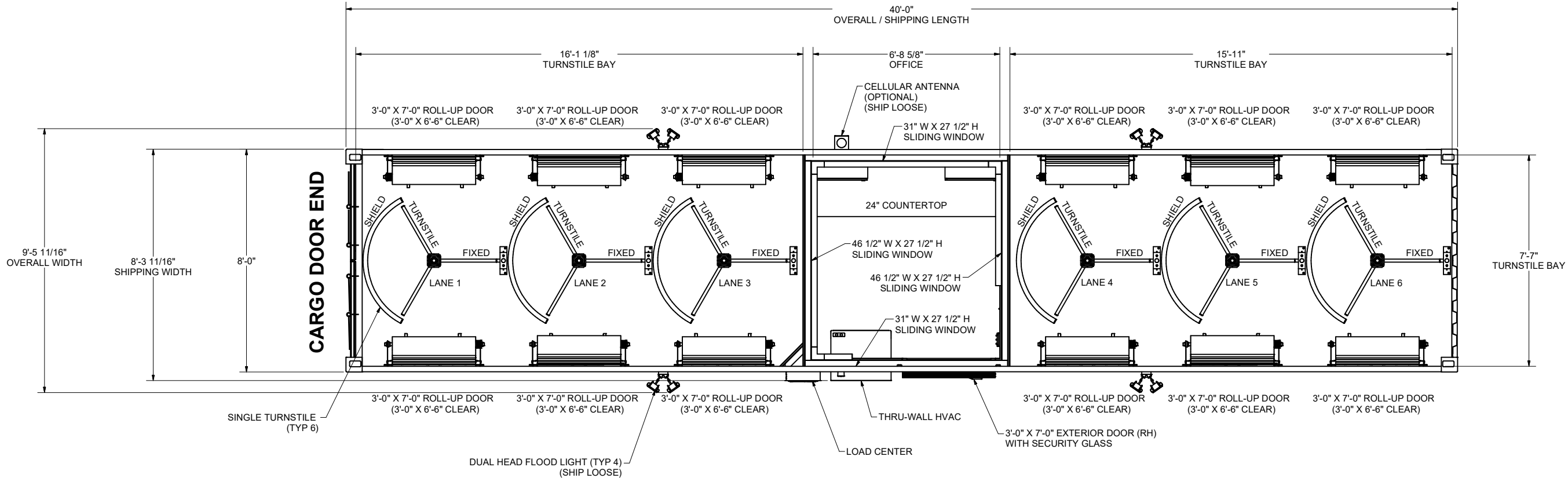
DRAWN		REA	1/4/2018	DATE	4
CHECKED		JES	4/17/2018	BY	3
ENG. APPR.		JES	4/17/2018	DATE	2
SALES APPR.		KH	2/21/2018	DESCRIPTION	1
MFG. APPR.		IBH	2/21/2018	REVISIONS	
O.A.		TH	2/21/2018		
SCALE		N.T.S.			
DWG NO		M18-001-M6MX-0101			
TITLE		ISOMETRIC SHEETS - OVERALL 2			
PROJECT NO		M18-001			
PROJECT		MAC6 - OFFICE IN MIDDLE			
CUSTOMER		MSSI STANDARDS			
PROJECT		MSSI STANDARDS			

COMMENTS:
 FINISH ALL MACHINED SURFACES AND BREAK ALL SHARP EDGES UNLESS OTHERWISE SPECIFIED.
 TOLERANCES ON ALL DIMENSIONS UNLESS OTHERWISE NOTED SHALL BE:
 ONE PLACE DECIMAL ± 0.03
 THREE PLACE DECIMAL ± 0.005
 FRACTIONAL ± 1/16"
 ANGULAR ± 1°

THE NUMBER IN THE FINISH SYMBOL IS THE MAXIMUM ACCEPTABLE ROUNDNESS VALUE IN A. MICROINCHES.

		FINISH SCHEDULE				
SPACE	MATERIALS	WALLS	CEILING	FLOOR	NOTES	
OFFICE	FRAMING	2" X 3" WOOD STUD, 24" OC	2" X 3" WOOD STUD, 24" OC	EXISTING CONTAINER PURLINS	2" X 4" WOOD STUD BAND AROUND CEILING PERIMETER ONLY	
	INSULATION	R-11 FIBERGLASS, KRAFT FACE	R-11 FIBERGLASS, KRAFT FACE	N/A	N/A	
	SUBSURFACE	N/A	N/A	EXISTING 1-1/8" PLYWOOD	N/A	
TURNSTILE BAY (LANES 1, 2, 3)	SURFACE	29GA RIBBED STEEL PANELS	29GA RIBBED STEEL PANELS	ROLLED VINYL, SLATE GRAY, DIAMOND TREAD	N/A	
	FRAMING	N/A	N/A	N/A	N/A	
	INSULATION	N/A	N/A	N/A	N/A	
TURNSTILE BAY (LANES 4, 5, 6)	SUBSURFACE	N/A	N/A	N/A	N/A	
	SURFACE	PAINTED STEEL	PAINTED STEEL	SPRAY-ON SKID-RESISTANT	29GA RIBBED STEEL PANELS ON OFFICE WALL ONLY	
	FRAMING	N/A	N/A	N/A	N/A	
	INSULATION	N/A	N/A	N/A	N/A	
	SUBSURFACE	N/A	N/A	N/A	N/A	
	SURFACE	PAINTED STEEL	PAINTED STEEL	SPRAY-ON SKID-RESISTANT	29GA RIBBED STEEL PANELS ON OFFICE WALL ONLY	

NON-SECURE SIDE



SECURE SIDE

GENERAL ARRANGEMENT - PLAN VIEW

SCALE 1/2" = 1'-0"

4	DATE	1/4/2018
3	BY	REA
2	CHECKED	JES
1	ENG. APPR.	JES
	SALES APPR.	KH
	MFG. APPR.	IBH
	Q.A.	TH
	SCALE	1/2" = 1'-0"
	DWG NO	M18-001-M6MX-0200

4	DATE	1/4/2018
3	BY	REA
2	CHECKED	JES
1	ENG. APPR.	JES
	SALES APPR.	KH
	MFG. APPR.	IBH
	Q.A.	TH
	SCALE	1/2" = 1'-0"
	DWG NO	M18-001-M6MX-0200

DRAWN		DATE	1/4/2018
CHECKED		DATE	4/17/2018
ENG. APPR.		DATE	4/17/2018
SALES APPR.		DATE	2/21/2018
MFG. APPR.		DATE	2/21/2018
Q.A.		DATE	2/21/2018
SCALE		1/2" = 1'-0"	
DWG NO		M18-001-M6MX-0200	

MSSI
Modular Security Systems

CUSTOMER: MSSI STANDARDS

PROJECT NO: M18-001

PROJECT: MAC6 - OFFICE IN MIDDLE

TITLE: GENERAL ARRANGEMENT - PLAN VIEW

THIS MSSI PRODUCT IS COVERED BY ONE OR MORE OF THE FOLLOWING PATENTS:

US 9,404,278; US 9,051,748; US 8,671,624; US 8,015,754; US 7,762,025; 7,823,338;
CA 2,587,968; CA 2,682,764; EP 1812666; DZ 5173; EG 25627; NG RPNG/C/C2007/737; EP 2137356

THIS DOCUMENT CONTAINS INFORMATION THAT IS CONFIDENTIAL AND PROPRIETARY TO MODULAR SECURITY SYSTEMS, INC. THIS DOCUMENT IS FURNISHED ON THE UNDERSTANDING THAT THE DOCUMENT AND THE INFORMATION IT CONTAINS WILL NOT BE REPRODUCED OR DISCLOSED TO OTHERS WITHOUT THE WRITTEN CONSENT OF MODULAR SECURITY SYSTEMS, INC. OR USED FOR ANY PURPOSE OTHER THAN CONDUCTING BUSINESS WITH MODULAR SECURITY SYSTEMS, INC. AND WILL BE RETURNED AND ALL FURTHER USE DISCONTINUED UPON REQUEST BY MODULAR SECURITY SYSTEMS, INC. COPYRIGHT MODULAR SECURITY SYSTEMS, INC. FIRST YEAR COPYRIGHT IS FIRST YEAR INDICATED ON THIS DOCUMENT. ALL RIGHTS RESERVED.

THIRD ANGLE PROJECTION	SHEET SIZE
	ANSI D