

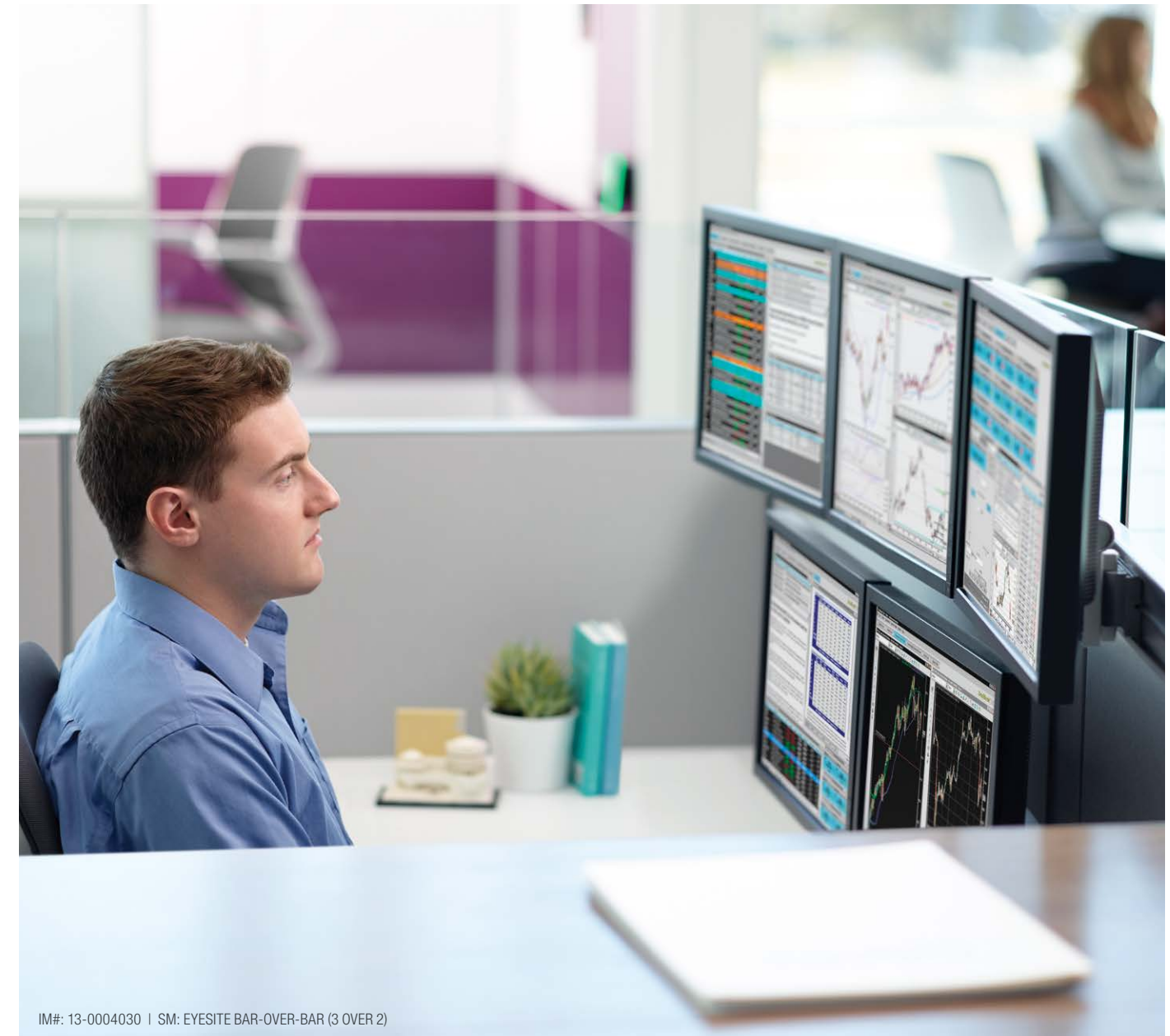
M#: 13-0004026

**Eyosite**  
flat panel display supports

**Steelcase**  
WORKTOOLS

## Displays for Comfort + Control

As technology continues to rapidly advance, displays are coming in more shapes and sizes and employees often use several at the same time. With increased usage, employees face added strain to their eyes, necks and backs. Eyesite was designed to give users control over the angle and depth of displays—regardless of shape, size and quantity—maximizing display usage while increasing comfort and productivity.



IM#: 13-0004030 | SM: EYESITE BAR-OVER-BAR (3 OVER 2)

Five display bar-over-bar configuration on a 26" column. Triple display bar with optional pivot brackets.

# 63%

improvement in productivity when a worker's display area is increased

Source: Hewlett Packard Development Company, L.P. and Microsoft Research

# 1%

of people using more than one display in 2008\*

# 30-40%

of people using more than one display in 2012\*



Dual display configuration on 12" column with adjustable focal depth bar and optional pivot brackets.



**FOCAL ADJUSTMENT**

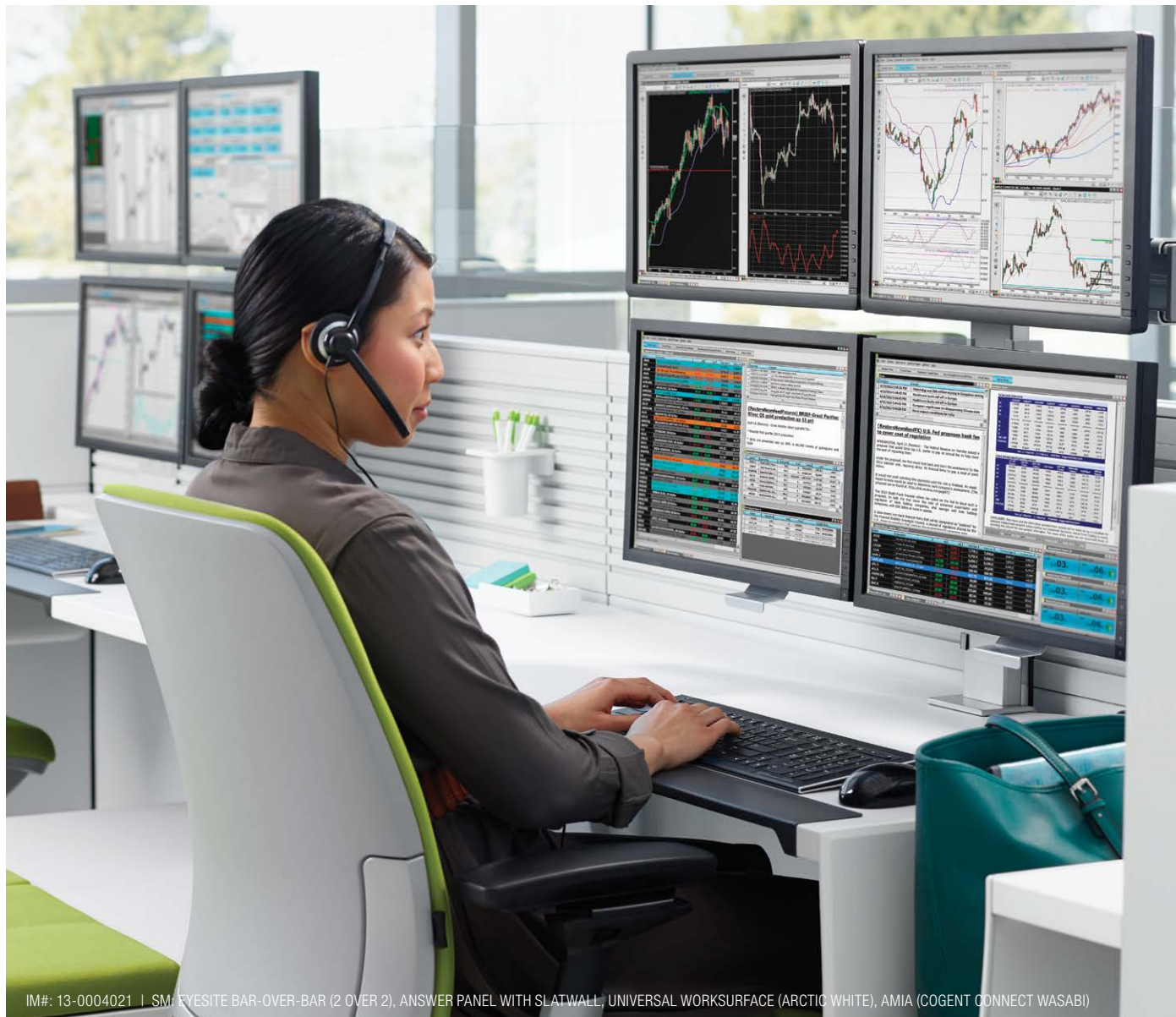
Adjustable focal depth bars provide 13" of adjustability. When not in use, displays tuck back neatly, clearing valuable worksurface space. Fixed focal depth bars are also available.



Eyesite's 26" column can accommodate up to six displays using two triple bars in a bar-over-bar configuration.

## More Flexibility

Eyesite's 12" and 18" columns offer a range of display and laptop configurations, including single, dual and triple display bars, to meet the needs of today's users. With Eyesite's 26" column, employees can easily utilize up to six displays in a variety of arrangements.



IM#: 13-0004021 | SM: EYESITE BAR-OVER-BAR (2 OVER 2), ANSWER PANEL WITH SLATWALL, UNIVERSAL WORKSURFACE (ARCTIC WHITE), AMIA (COGENT CONNECT WASABI)

Four display bar-over-bar configuration on a 26" column with optional fixed focal depth bars.



12" COLUMN WITH ADJUSTABLE FOCAL DEPTH BAR

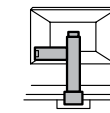


18" COLUMN WITH FIXED FOCAL DEPTH BAR

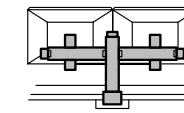


26" COLUMN WITH FIXED AND ADJUSTABLE FOCAL DEPTH BARS

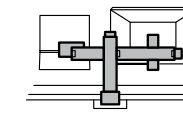
## STATEMENT OF LINE



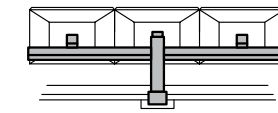
Single



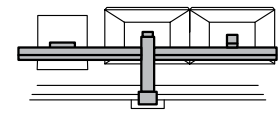
Dual



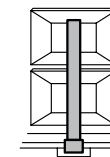
Dual with laptop



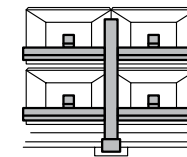
Triple



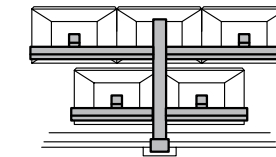
Triple with laptop



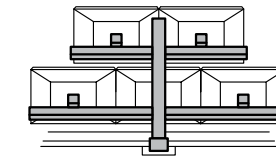
Bar-over-bar (1 over 1)



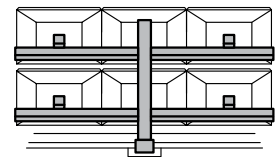
Bar-over-bar (2 over 2)



Bar-over-bar (3 over 2)



Bar-over-bar (2 over 3)



Bar-over-bar (3 over 3)

For further options, see Eyesite Applications Guide.

## SURFACE MATERIALS

Surface material shown in brochure:

■ Platinum

Color is representative and may vary slightly from actual material.

For further options, visit us online.

## SUSTAINABILITY

At its heart, sustainability at Steelcase is about people. It's about creating and supporting the economic, environmental and social conditions that allow people and communities to reach their full potential.

**Research and insights direct our path.** It's not only about creating goods, it's about creating good. It's not only about creating value, it's about living our values. It's not just about reducing our footprint, it's about expanding our reach. It's about creating lasting and meaningful change to enable the long-term wellbeing of current and future generations.

**Innovative products and solutions result.** In the development of our products, we work to consider each stage of the life cycle: from materials extraction, production, transport, use and reuse, until the end of its life. We demonstrate performance through third-party verified certifications and voluntary product declarations.

Steelcase's sustainability promises, actions, and results are communicated in an annual Corporate Sustainability Report.

Eyesite meets Silver Cradle to Cradle specifications.\*

Depending on how it's configured, Eyesite total recycled content ranges from 22 – 30%, made up of 17 – 23% post consumer content and 5 – 7% pre-consumer content.

Eyesite components 99% recyclable.

\*McDonough Braungart Design Chemistry, LLC, an independent product and process design firm, assesses and certifies products that use environmentally safe and healthy materials and are designed for material reutilization and social responsibility. Cradle to Cradle Certified is a certification mark of MBD.

**Steelcase®**

**Call 800.333.9939 or visit [Steelcase.com](http://Steelcase.com)**

 [facebook.com/Steelcase](https://facebook.com/Steelcase)

 [twitter.com/Steelcase](https://twitter.com/Steelcase)

 [youtube.com/SteelcaseTV](https://youtube.com/SteelcaseTV)

Item #15-0000889 6/15 ©2015 Steelcase Inc. All rights reserved. All specifications subject to change without notice. Trademarks used herein are the property of Steelcase Inc. or of their respective owners. Printed in U.S.A. FSC certified.