

CELEBRATING
160
years
of CARING

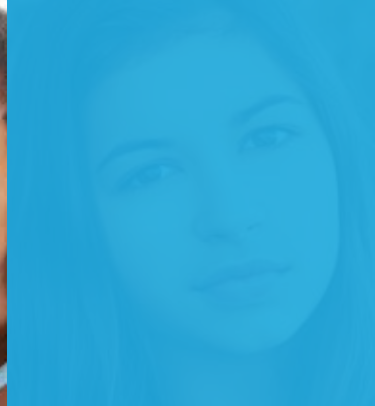
maryvale
SINCE 1856



ANNUAL
REPORT
2015 | 16



CARING
for our
FAMILY



POWER IN NUMBERS



	2015/16	2014/15
CHILDREN AND FAMILIES SERVED		
RESIDENTIAL TREATMENT FOR GIRLS	108	187
EMERGENCY PLACEMENT CENTER	341	269
COMMUNITY-BASED SERVICES	197	170
EARLY EDUCATION CENTERS	385	344
SUMMARY OF REVENUES	2015/16	2014/15
PROGRAM SERVICE FEES	\$12,510,256	\$11,210,880
INVESTMENT EARNINGS	\$709,970	(\$197,227)
OTHER INCOME	\$72,131	\$72,421
CONTRIBUTIONS	\$9,550,265	\$7,613,967
TOTAL	\$22,842,622	\$18,700,041
SUMMARY OF EXPENSES	2015/16	2014/15
PROGRAM SERVICES	\$18,392,081	\$18,464,986
SUPPORTING SERVICES	\$1,944,678	\$2,023,790
FUNDRAISING	\$803,716	\$735,398
TOTAL	\$21,140,475	\$21,224,174

THE POWER OF RELATIONSHIPS



RESIDENTIAL
TREATMENT
SERVICES



COMMUNITY-
BASED
SERVICES



EARLY
EDUCATION

TRAUMA INFORMED CARE

All Maryvale programs are guided by the principles of Trauma Informed Care, a treatment approach that recognizes the impact of trauma on youth and families and offers interventions that address both trauma-related symptoms and their underlying causes.

This proactive model asks the question “What happened to this person?” rather than “What is wrong with this person?” and focuses on what is needed to heal.

Trauma Informed Care has become the gold standard for residential treatment. It is associated with decreased mental health symptoms and substance abuse, as well as improved self-esteem and interpersonal relationships.

TRAUMA INFORMED CARE IN ACTION

Against all odds, Angel has flourished. She has overcome the agony of rape and sex trafficking, alcohol abuse and unspeakable horrors.

Despite the trauma of her past, Angel has chosen a different future. It wasn't easy. The emotionally scarred 17-year-old arrived at Maryvale with a defiant attitude, engaging in kicking and screaming matches, refusing to attend school, leaving the campus without permission and arguing with her peers.

Maryvale's staff never gave up on Angel. Using a Trauma Informed Care approach, Maryvale staff offered empathy and guidance to help Angel find the hope she needed to break free from her pain. Trauma victims like Angel often lose the ability to manage their feelings, interconnection and attachment. With Trauma Informed Care, relationships are paramount. Staff helped Angel learn that relationships don't always hurt.

Diligent work in intensive therapy coupled with Maryvale's Trauma Informed Care environment paid off. She graduated early from high school and is now attending college. She proudly received a letter of recommendation from the Yvonne "Sunset" Agee Scholarship Award.



THE POWER OF LOVE



“Make it a practice to judge persons and things in the most favorable light at all times and under all circumstances.” — *St. Vincent de Paul*

Dear Friends:

Welcome to Maryvale, where healing, empowering and educating children and families in need has been our mission for more than 160 years.

Our story began in 1856, when five Daughters of Charity arrived from Maryland and established an orphanage to rescue abused and neglected children living in poverty on the streets of Los Angeles. That small beginning eventually evolved into Maryvale as a full-fledged social welfare organization.

During the last year, through our Residential, Community-Based and Early Education Services, we assisted 950 children and families in need.

We look to 2017 with renewed energy and faith that we will be able to give hope and a brighter future to those we serve. Thanks to you our “extended family,” we can continue to heal and protect some of the most vulnerable members of our society.

As you read our report, you will note that one of our successes has been to transition Maryvale’s service philosophy to Trauma Informed Care. This approach allows us to build every relationship on a foundation of trust with a clear understanding of the effects of trauma on healing and recovery. We have seen positive results on many levels including a decrease in the number of residents in crisis.

We invite you to join us in our mission to Heal, Empower and Educate. You can do so by making a donation, volunteering, sharing our message on social media and sharing our work with friends, family and colleagues. Together we can keep hope alive.

A handwritten signature in blue ink, appearing to read 'Steve Gunther'. The signature is stylized and fluid, with the first letters being larger and more prominent.

Steve Gunther
President & Executive Director

THE POWER OF HOPE



Clients improved after receiving intensive Community-Based Services

197

Clients benefitted from Community-Based Services



385

served in Early Education

341

children were served in our

Emergency Placement Center



950

children & adults were served by Maryvale

70%

reduction of residents in crisis



RESIDENTIAL SERVICES

Residential Treatment Program Intensive mental health services and care for girls, ages 13 to 18.

Emergency Placement Center Short-term care and mental health assessments for boys and girls, ages 6 to 12.

COMMUNITY-BASED SERVICES

Programs and mental health support for at-risk and struggling children and families.

Community Mental Health Program

Wraparound Program

Child Abuse Prevention Intervention and Treatment (CAPIT)

EARLY EDUCATION SERVICES

Nurturing and stimulating Pre-K learning centers for active and curious pre-schoolers.

Rosemead: Pre-K

Duarte: Pre-K and before- and after-school care program for School-aged children

CELEBRATING

160
years
OF CARING



maryvale
SINCE 1856

www.maryvale.org

ROSEMEAD CAMPUS

7600 East Graves Avenue
Rosemead, CA 91770

DUARTE CAMPUS

2502 East Huntington Drive
Duarte, CA 91010