



Hydraulic Hoist Canopy5 Instructions 2016 (rev. 160317)

Canopy layout: Parts consists of:

Main Bows (10) for 22' (11) for 24' (12) for 26'...

(2) End caps.

(4) Lower Tubes, 2.5" x 2.5".

(2) Upper Tubes, 2" x 2".

(2) Main lower tube splicers.

(1) Upper tube splicer.

(4) Canopy legs 2.5" tube that slides into the 7' or 10' frame extensions.

(1) Hardware box which includes:

(4) J Hooks to attach canopy to canopy legs,

Hardware:

Step 1 (16) 3/8 x 3/4" long Hex Head Bolts.

(16) 3/8 Brass **Square Nuts.**

Step 2 (2) 3/8 x 2.5" long Hex Head Bolts.

(2) 3/8 Brass Hex Nuts.

(4) 3/8 washers.

Step 3 (4) 3/8 x 3" long Hex Head Bolts

(8) 3/8 Brass Hex Nuts.

(8) 3/8 Washers.

Step 4 (2) 3/8 x 3" long Hex Head Bolts

(2) Brass Hex Nuts

(4) 3/8 Washers.

Step 5 (12) 1/4-20 x 2" long **Carriage Bolts**

(24) 1/4-20 x 3" long **Carriage Bolts**

(36) 1/4-20 **Brass Nylock Nuts**

(36) 1/4" Washers.

Step 6 (8) 3/8 x 3.5" long Hex Head Bolts,

(8) 3/8 Brass Hex Nuts.

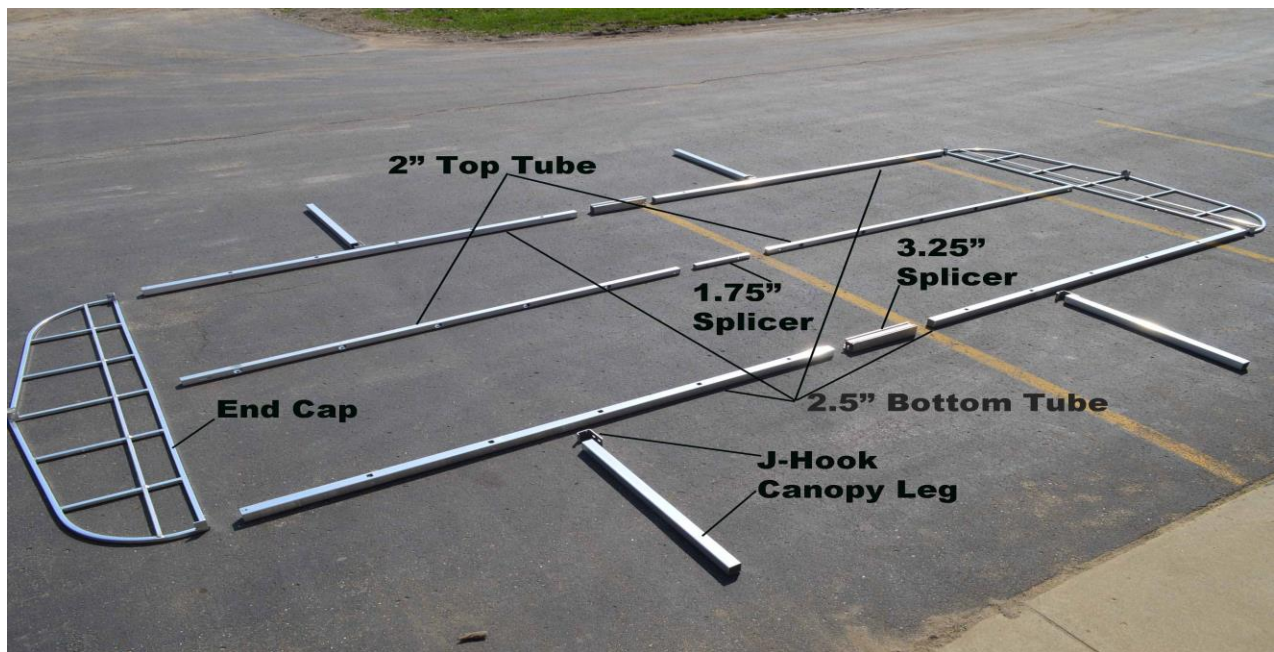
(4) 3/8 x 1" long Hex Head Bolts,

(4) Brass **Square Nuts.**

(16) 3/8 Washers.

Tools required: (2) 9/16 wrenches. 7/16 socket wrench. Scissors.

Step 1: Lay all the parts out.



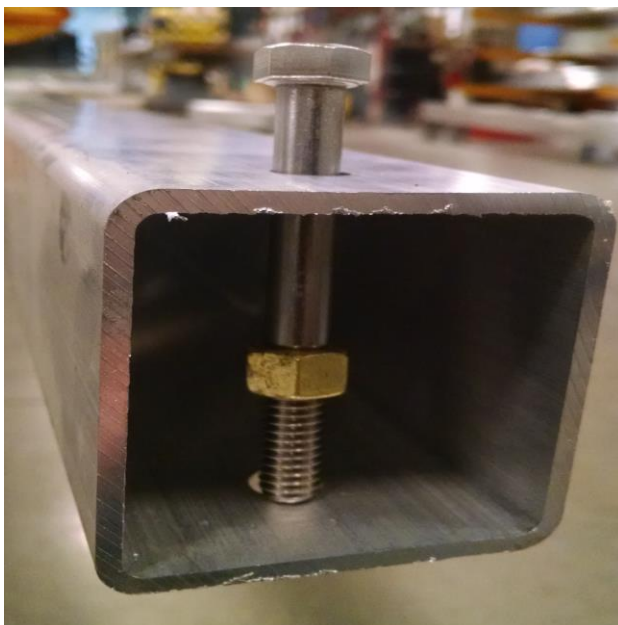
Bag 1: Fasten the bottom tubes (2.5" x 2.5" tube) with splicer as shown. Make sure screw is centered into hole so it will tighten down on to canopy body tube. All Bolt Heads should face up and to the inside to protect Canopy Fabric.



Step 2 Bag 2: Fasten the center tubes (2" x 2" tube) with splicer (1.75" x 1.75" tube).



Step 3 Bag 3: Fasten the end caps with the bottom tubes.



Close up view of corner.



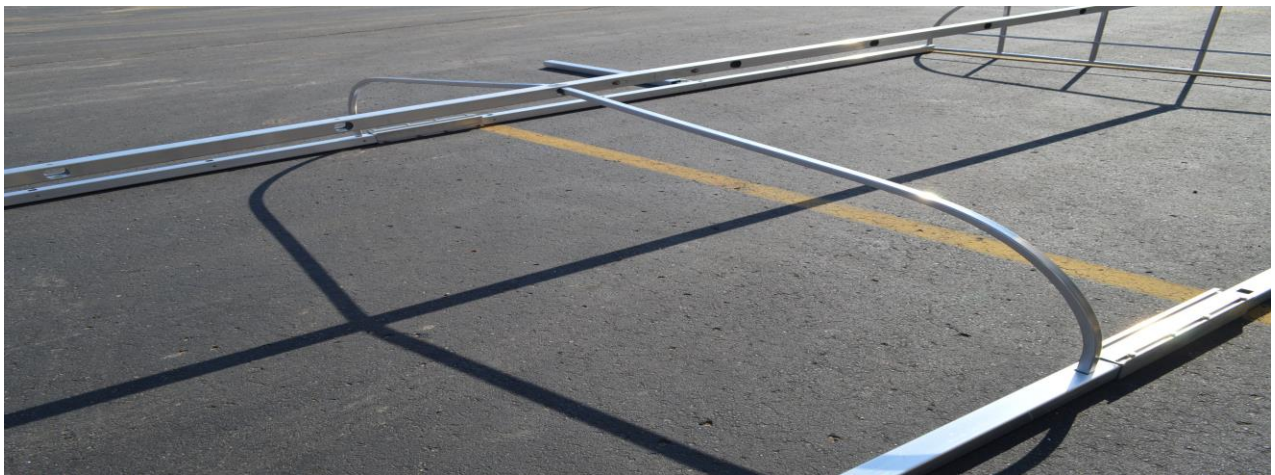
Step 4 Bag 4: Attach the top tube to the end caps.



Step 5 Bag 5: Slide the bow tubes into the center tube upside down.



Then rotate upright and slide into the square hole into the bottom tube.



Repeat for remainder of bows....



And fasten with $\frac{1}{4}$ -20 carriage bolts. 3" for bottom tube and 2" for top tube. Round heads faces the fabric of course.



Assembled Canopy ready to attach to boat lift posts



Step 6 Bag 6: (4) 3/8 x 3.5" long Hex Head Bolts, (4) 3/8 Brass Hex Nuts, (8) Washers. Upright Post showing 'J' Hook.

Look further down the Upright Post and notice the 1" Hex bolt and square nut for tightening the leg inside the post.

After all (4) legs are level, Loosen (1) 1" screw at a time (slide it down the Post a few inches and snug for now) and drill through the 2.5" tube where this screw was, then realign the 1" screw into this hole to secure your canopy leg. This will secure the canopy leg. Once the canopy is positioned over the boat in the proper location, use the second hole in the J-Hook to fasten the J-Hook to the 2.5" Bottom Canopy Tube using the remaining (4) 3/8 x 3.5" long Hex Head Bolts, (4) 3/8 Brass Hex Nuts, (8) Washers.

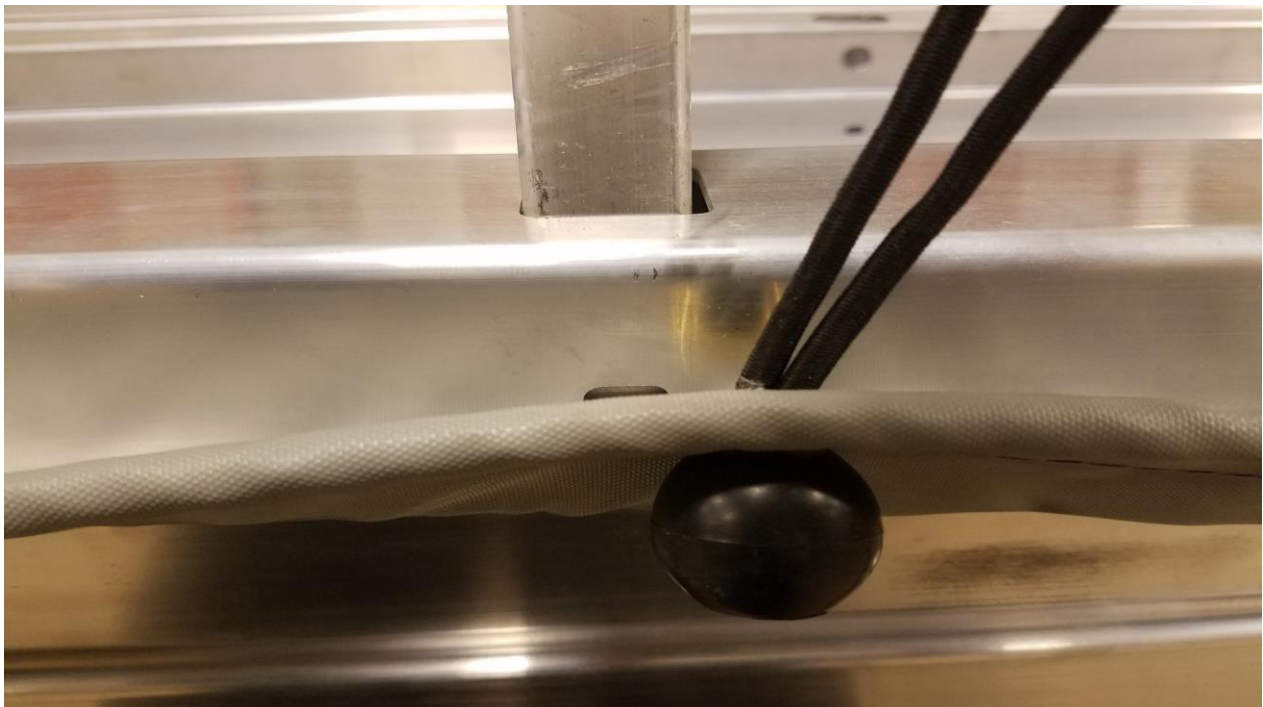
Check all bolts for tightness. Recheck annually. Tape all sharp edges with high quality outdoor tape to protect fabric.

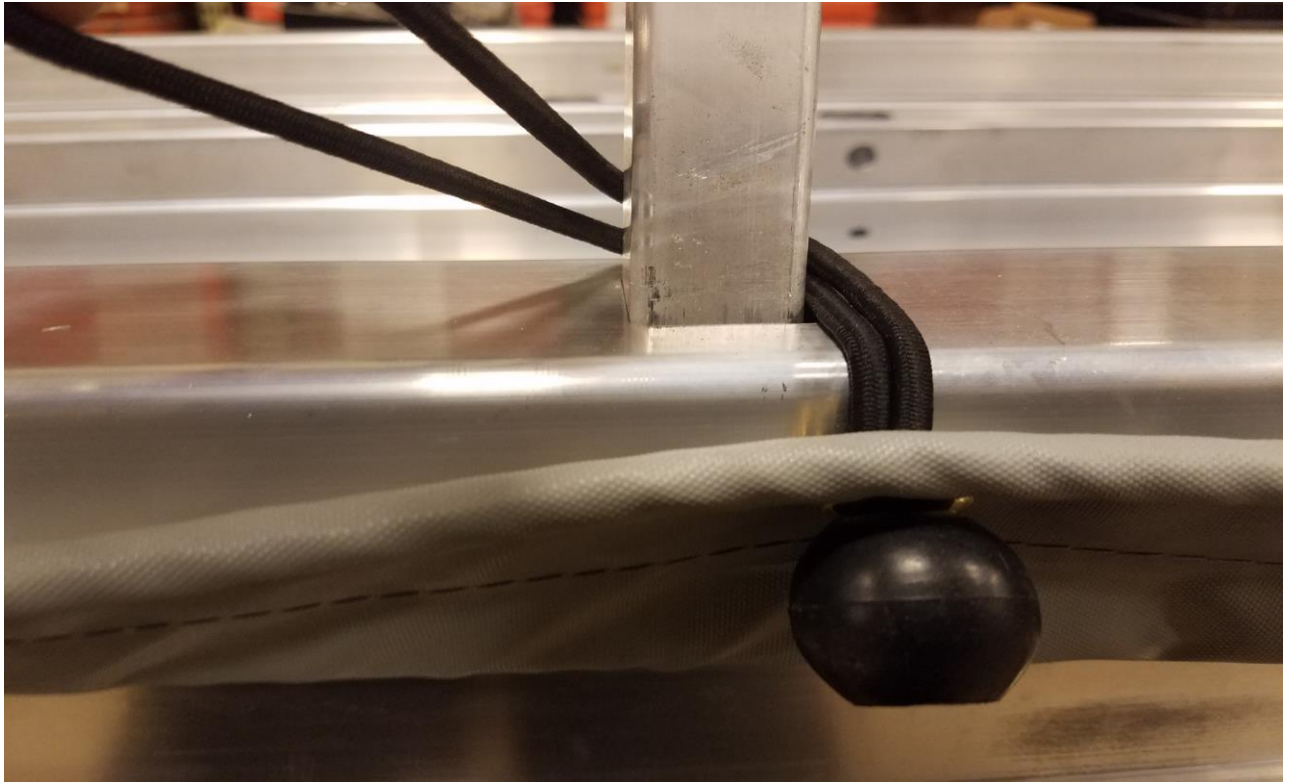


Installing Canopy Cover: Fasten cover using the Bungee Balls. Start at the end caps, loop the cord thru the grommet in the canopy cover pull down on the cover to tighten, then pull in toward you, and then pull up to tighten more, take the loop and wrap it around the Lacer Bar (on the end cap) or RIB (along the sides), and bring it back to the ball and to secure it.

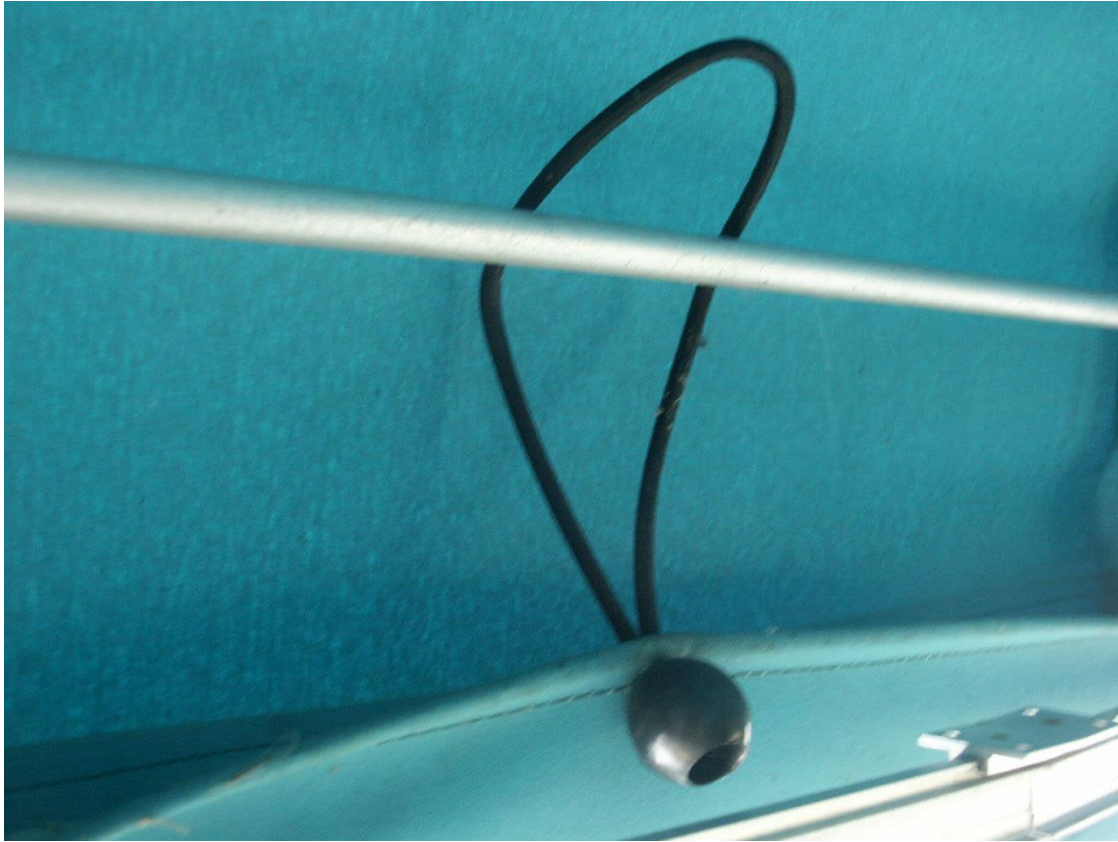
You may want to wrap it a couple times around the Bar/Rib to achieve maximum tension...

With scissors, cut tabs in the canopy lacer flap where the upright post attach. Do not cut into the outer fabric, cut only the inner lacer flap.





Older style canopy frame. If your canopy has a lacer bar as shown, use this method to lace your cover. You can wrap the bungee cord around the lacer a few times to tighten it more.





For an extra tight fit – Pick a very calm day to attempt this....

After the canopy cover is on and the front end cap is fastened, before fastening the rear and the side bungies, pull the canopy fabric front to back and see how much gap there is between the fabric and the frame. Remove the cover from the rear end cap. Mark the tubes where the splicers overlap with a sharpie as a reference point. Then loosen the rear half of the 3 tube splicers, and the rear J Clamps that hold the canopy frame to the rear posts. Pull the rails and the top tube apart the amount of the gap + 1". Tighten the splicers and adjust the J channels the same amount to keep the posts straight, and tighten. Retry the cover. Adjust the splicers as needed for that perfect fit. Bungee the rear cap, start in the middle and work toward the ends, then bungee the sides, again, start in the middle...

How's that for a tight cover? Share your work with us and if it's epic, you'll score a spot on our website.

Extra notice: Extended valance and roller curtain covers. Pipes (1" pvc or aluminum) supplied by others, must be slid into the pipe pockets and the corners must be tied (bungied) together to prevent wind whip. Where the canopy valance meets the upright posts you can cut a slit on the inside of the pipe pocket and feed the bungee around the pipe/tube and secure it to the posts.