



VISTAGREEN

ARTIFICIAL GREEN WALLS

INSTALLATION GUIDE

www.vistagreen.com

Copyright © 2019, Vistagreen Limited. All rights reserved.



QUICK & EASY INSTALLATION

Use our Vistagreen Fixings for a neat and reliable installation.
Use 4 fixings per panel.



The Vistagreen Fixing System has been specifically designed to securely hold Signature Panels in the optimum position and to give the best result in a wide variety of applications.



www.vistagreen.com

6 EASY STEPS TO FOLLOW



Measure & mark



Drill the holes



Plug & screw the fixing



Attach the panel

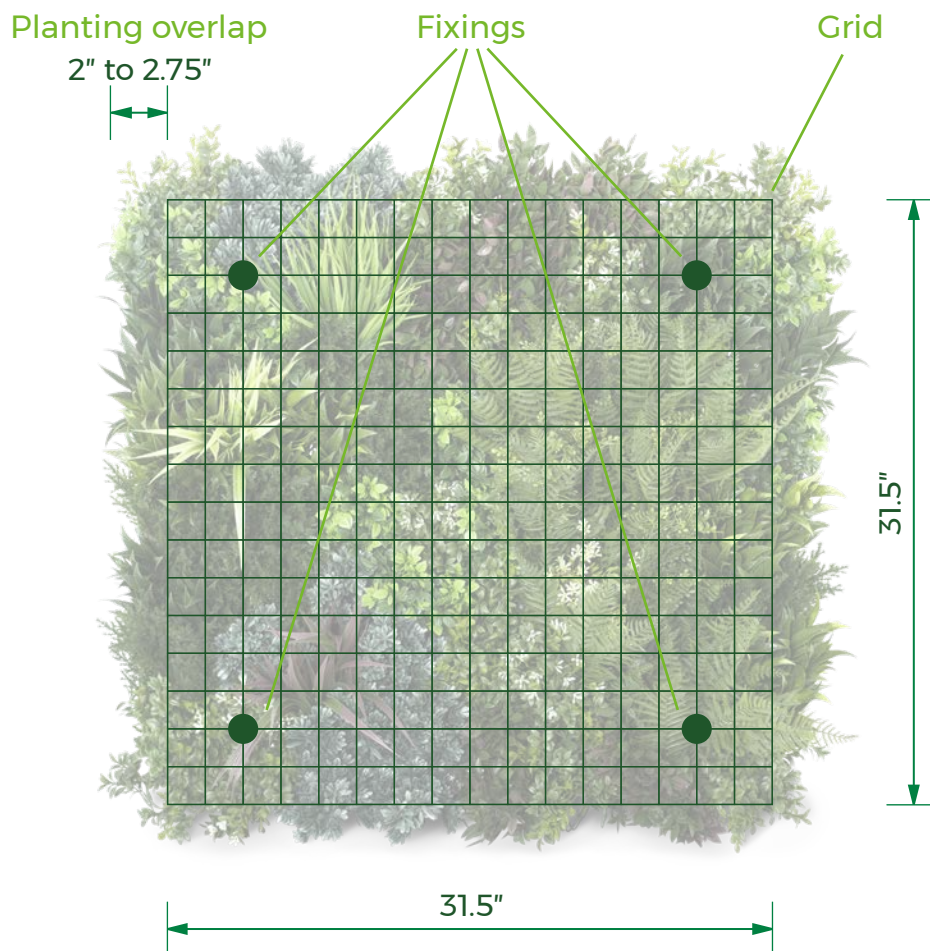


Secure the fixing



Ruffle & bend the foliage

SIGNATURE PANEL & FIXINGS



The fixings can be attached to the vertical or horizontal wires or placed at the joins.

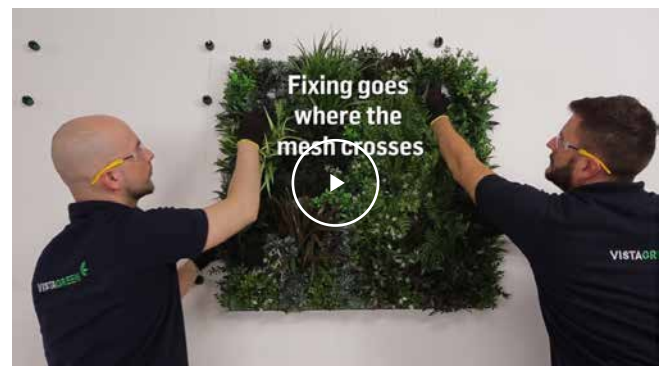
The VistaGreen Signature Panel was designed with a small allocation of 'planting overlap' to allow for seamless installation of multiple panels. The top overlap is slightly greater than the bottom one whereas the side overlaps are the same. The overlap also serves to disguise the grid that holds the plants.

VISTAGREEN INSTALLATION VIDEOS



PANEL PREPARATION

This video shows how to increase the volume and depth of foliage.



GREEN WALL INSTALLATION

This video shows a practical example of how to install VistaGreen Signature Panels.

INSTALLATION TOOLS

These are the tools that you need to install Signature Panels.



Safety goggles



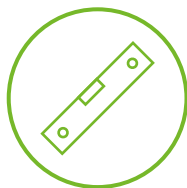
Tape measure



Drill



Safety gloves



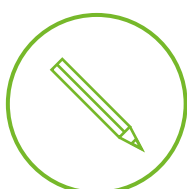
Spirit level



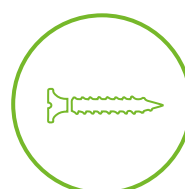
Drywall fixings



**Ladders or
mobile tower**



Pencil



Screws

www.vistagreen.com

@vistagreenltd



VISTAGREEN

ARTIFICIAL GREEN WALLS



1

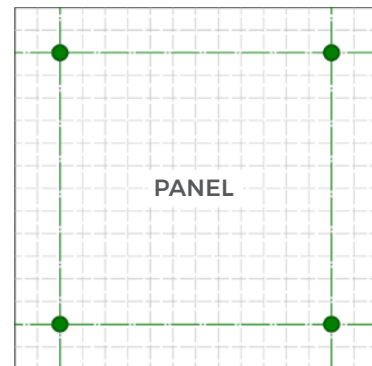
Important Note:

See panel preparation video first before starting the installation.

Measure and mark the holes in the wall.



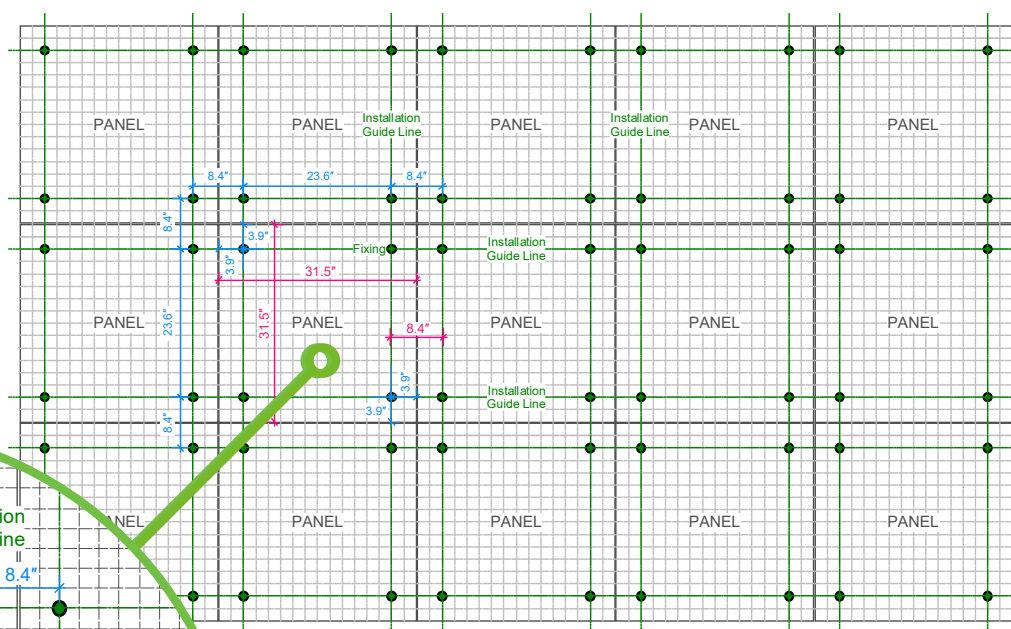
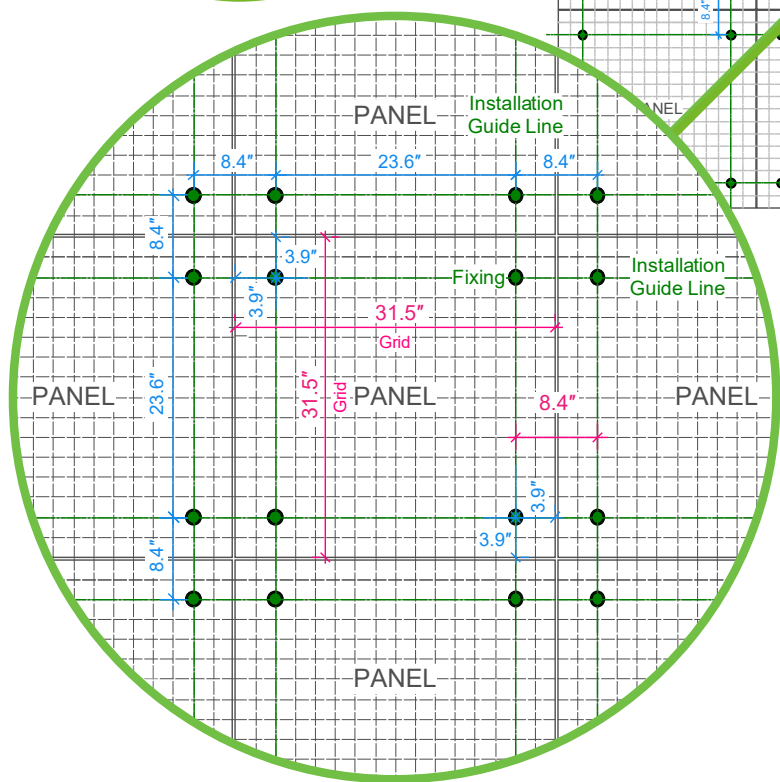
A detailed *Fixing Layout* and the steps to follow are shown on next page.



We recommend to leave a gap between panels to allow for easier installation and to reduce bunching of foliage or joins.

Maximum gap between 2 panels can be : 0.8"

FIXING LAYOUT



The fixing should ideally be installed on the cross joint of the grid as shown on the diagram above; however, it is possible to secure the Signature Panels with fixings on the horizontal or vertical bars, with the latter being the least recommended option.

Gap left in the drawing: 0.6" (optimum)

STEP 1

At top left of the panel, measure 3.9" down and mark this as first point.

STEP 2

Measure 23.6" across horizontally from first marked point and mark as second point.

STEP 3

Measure 23.6" down vertically from first marked point and mark as third point.

STEP 4

Measure 23.6" across from third point and mark as fourth point.

STEP 5

Measure 8.4" from point 2 and 4, which become points 1 and 3 of the second panel. This process can be continued throughout installation.

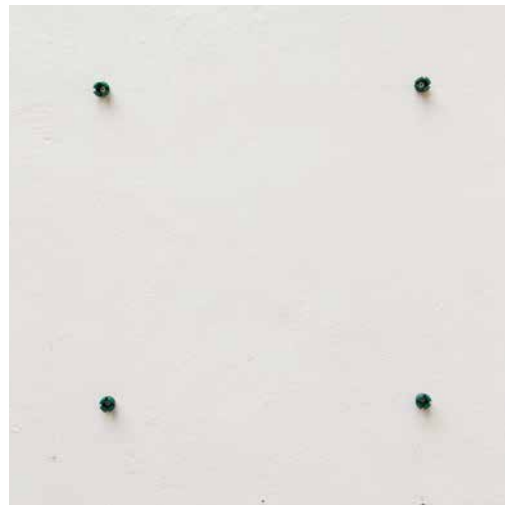
2

When all the holes from the fixing layout have been marked, drill them. Then, insert drywall fixings in each hole.



3

Plug in the fixings and screw the fixings in (not too tight). Use 4 fixings per panel, one in each corner.



4 Attach the panel to the fixings.



5 Plug in the fixing and secure the top cap of the fixing, turning clockwise until tight.



6

Place panels side by side. Spend some time ruffling and bending the foliage for a natural look.





HEAD OFFICE / R&D FACILITY:

Vistagreen Ltd.

Unit 6 Trade City, Lyon Way,
Frimley, Camberley, Surrey GU16
7AL United Kingdom
Tel: +44 (0)20 7385 1020

United States

upscapers

Official VistaGreen Importer, Wholesaler, Certified
Installer & Installation Training Partner

UPScapers - 619-244-7732

VistaGreen LTD US Answering Service

Tel: +1 727-325-2901

www.vistagreen.upscapers.com

>



www.vistagreen.com