

ibex | **EVO**[™]
portable rugged ultrasound



evo[®]

EVO[®] EXCLUSIVES

Battery

- Field-swappable battery
- External battery charger docking station (AC or car charger)
- 3 hours of continuous battery life

Transducers

- Cables designed and tested to withstand 1.2 million flex cycles
- Frequencies from 2 to 14MHz

Rugged

- EVO[®] is barn-ready rugged
- EVO[®] is designed for harsh environments

On-Board Help

- Context sensitive help at your fingertips

EVOStream™

- Share live studies directly with anyone with a mobile device
- Educational tool for image sharing
- Provides image sharing from a safe distance
- Client communication tool

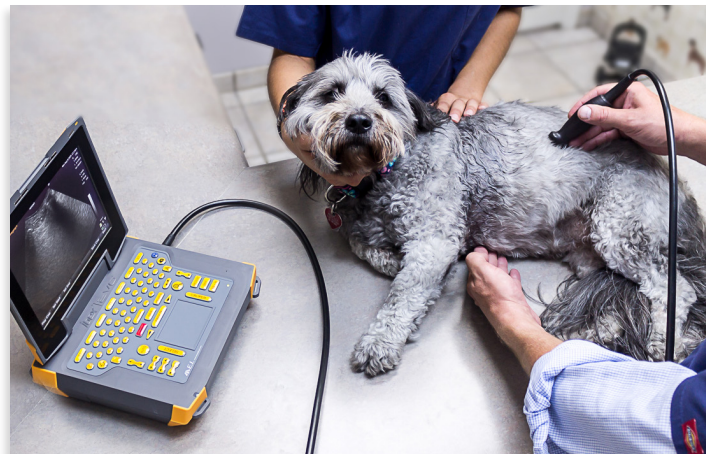
Bluetooth Remote

- User defined programmable buttons
- Scan patients and control EVO[®] from a distance

User-Defined Adjustments

- Preset veterinary specific exam types
- Users can add custom presets
- Users can customize images and scan settings

FROM CLINIC TO BARN...





DESCRIPTION

The latest, most advanced model in the Ibex[®] family, with significantly better image resolution, color-flow Doppler, remote control, improved features and remote image-viewing apps. EVO[®] is ideal for equine practices, companion animal practices, zoos, and anyone demanding a high-quality image in a robust system. Rugged, splash resistant, and highly portable, with a new line of variable frequency transducers, the EVO[®] is ready to go wherever you need it most. The Ibex[®] EVO[®] also accommodates optional video headsets—perfect for viewing in bright sunlight or low light situations.

With four times the processing power as the current Ibex[®] platform, the Ibex[®] EVO[®] provides image quality never before seen in a portable ultrasound this rugged. Improved image quality will allow the user faster and more accurate exams for any species.

At just under seven pounds, the Ibex[®] EVO[®] is designed to go anywhere, from an exam table in the clinic to the truck to the barn. With field-swappable batteries you will no longer need to worry about the closest outlet. Engineered with DuraScan[®] technology, with both sealed keyboards and probe connections, the Ibex[®] EVO[®] can go anywhere your work takes you.

FEATURES

- Ibex[®] EVO[®] advanced imaging software
- Full range of imaging modes: B, B+M, PD, Color, PWD available
- Ruggedized DuraScan[®] transducers 2-14 MHz
- Fast boot time for more uptime
- Customized, veterinary-specific exam presets
- EVOSTream™ Wi-Fi Remote Scanning App
- 8.4 inch sealed, sunlight-readable LED Display
- Sealed, LED backlit keyboard
- 3+ hour battery run time (field-swappable)
- Lightweight 6.4lb (2.9 kg)
- Engineered with DuraScan[®] technology
- DICOM compatible
- Full patient image management system
- 3 year warranty

fastvet™

E.I. Medical has partnered with Drs. Gregory and Stephanie Lisciandro, creators of **FASTVet™**, to bring a new level of rapid diagnoses to the small animal practitioner.

FASTVET™

FAST is an acronym for the abbreviated ultrasound examination called *Focused Assessment with Sonography for Trauma* created as a triage and post-interventional screening test by human trauma surgeons in the 1990s.

Abdominal FAST (AFASTSM), thoracic FAST (TFASTSM), Vet BLUESM, and Global FASTSM (GFAST) have been developed by **FASTVet™** for veterinarians as rapid, point-of-care screening tests, that within minutes answer important clinical questions to help better direct both care and diagnostics in small animals.

These 3 techniques require no shaving of dogs and cats, minimal restraint, and serve as screening tests for Trauma, Triage and Tracking (monitoring)—thus the T3 designation.

These are truly practice-changers! You will quickly become a believer using these 3 techniques as extensions of your physical exam on a daily basis (the T3); and by capturing diseases, conditions and injuries with the use of AFASTSM, TFASTSM, Vet BLUE, and Global FASTSM (GFAST) that you would have traditionally missed or been delayed in dogs and cats of your valuable clients. As you will find, **FAST Saves Lives™!**



WHY FASTVET™ AND EVO?

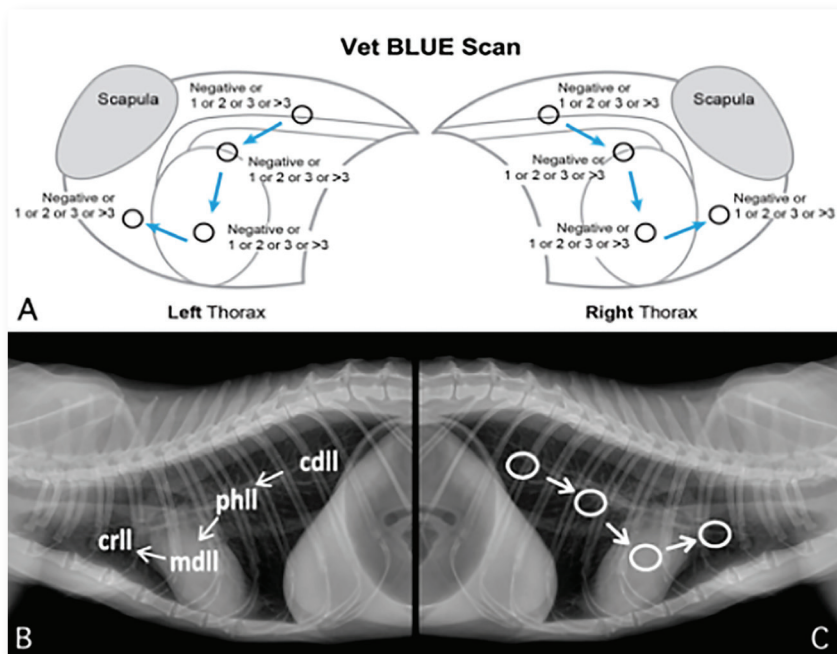
You should be using ultrasound EVERY DAY in your small animal practice!

With **FASTVet™** techniques, you do not need to be an expert sonographer to be able to assess and monitor your patients. These are standardized, goal directed exams that you can readily use and implement in your practice. **FASTVet™** techniques do not replace complete abdominal ultrasound and echocardiography (you can refer to an expert sonographer for those) but are additional ultrasound formats to assess your patients.

FASTVet™ techniques are valuable for patient care in general practice, emergency practice and specialty practice (all disciplines). You can learn these techniques quickly and use them in your practice EVERY DAY.

FASTVet™, when used in conjunction with E.I. Medical Imaging's **EVO®** and the new **C6E** transducer, offers something that no other portable ultrasound does—rapid diagnostic protocols on a portable unit and probe designed specifically for small animal veterinarians.

Contact us at E.I. Medical Imaging for more information—866.365.6596/eimedical.com



transducers etc.



CL3E [EVO®]

Low-frequency, deep penetrating convex transducer
Transabdominal work in cattle, horses, small ruminants, camelids, large dogs, exotics/wildlife



CLI3E [EVO®]

Side fire, low-frequency convex probe—90° array, 30cm penetration
Bovine and equine reproduction, large and small animal abdomen



L14E [EVO®]

High-frequency linear transducer
Equine tendons, small animal abdomens, neurovascular applications, superficial structure



I.C.E.®

The Ibex® Customizable Extension lessens fatigue and stress on the user's arm and shoulder.

The I.C.E.® extension allows easy insertion or removal of the probe (compatible with Ibex® Pro L6.2MHz and CLI3.8MHz transducers)



MC8E [EVO®]

High-frequency microconvex transducer
Small animal abdomen, bovine reproduction, small ruminant pregnancies



L6E [EVO®]

Linear transducer
Bovine and equine reproduction, tendon



L3ASE [EVO®]

Linear transducer
Bovine carcass merit



OPU Device

The OPU Aspiration Handle is a transvaginal needle guide device designed for use with the MC8.0MHz transducer
Used with long or short needles for dominant follicle reduction, ovum pickup, biopsy, ovarian infusions, scientific research



MC80PU

Ovum pickup probe and handle [6-10 MHz], 12 cm depth
Equine and bovine



C6E

Multi-frequency transducer, [4-9 MHz], 18 cm depth
Designed specifically for small animal use

ACCESSORIES



InSite® 2 Video Headset

Projects ultrasound images into a goggle-style headset
Ideal for working in bright sun and reflective conditions such as water.

Most commonly used in bovine reproduction, aquatics, wildlife



Ibex® Waist Pouch

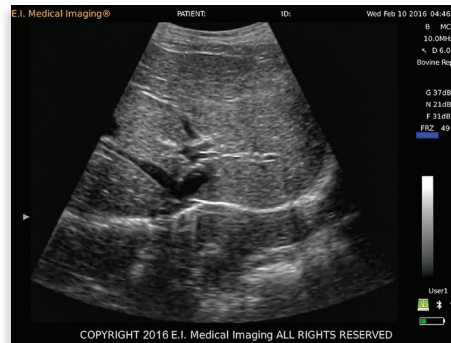
Accommodates the Ibex® Pro in closed position
Keeps unit self-contained and streamlined when scanning with headset



Wireless Monitor

Streams image from Ibex® Pro ultrasound to external monitor
Includes transmitter for ultrasound, 4 channels, 8" screen

GALLERY



E.I. MEDICAL IMAGING

E.I. Medical Imaging® was founded in 1984 with the vision of developing a state-of-the-art, real-time ultrasound scanner to serve veterinarians and livestock producers world-wide.

Our products have evolved with the needs of the market. We are proud to be the only manufacturer of portable ultrasound systems engineered and developed in the United States specifically for the animal industry.

For over 30 years, the company's core values have remained intact: putting the customer first and delivering solid, effective ultrasound solutions. Today we are a world leader in the durable, portable, veterinary ultrasound industry.

CONTACT INFORMATION

E.I. Medical Imaging
110 12th St. SW, Unit 102
Loveland, CO 80537-6396

toll-free/1.866.365.6596
phone/970.669.1793
fax/970.669.1902
www.eimedical.com



EDUCATION

EIMI is committed to education. From online learning resources to classroom and wet lab training experiences, we are here to ensure that you get the most out of your ultrasound equipment. Our on-staff veterinarian and sales team are always available to assist you as you put your Ibx® system to work.

EIMI is also involved in educating future veterinarians, and offers two specific programs toward that end:

- EIU™ Student Externship Program—EIMI provides ultrasounds on loan to vet students for externship experiences. Contact us for more information.
- EIU™ Seminars—EIMI hosts ultrasound seminars at veterinary schools and in the field, comprising a short introductory lecture and hands-on wet labs. Please contact us to schedule.

CUSTOMER SUPPORT/LOANER PROGRAM

Downtime is not in the vernacular at E.I. Medical Imaging®—service is the hallmark of our business. We engineer systems specifically for veterinary use and understand the challenges downtime brings. With industry-leading service turnaround times and a free loaner program, we ensure continuity of your business. All service is conducted at our EIMI facility in Loveland, Colorado, using only genuine EIMI parts.