

ibex® | EVO II
portable rugged ultrasound

*companion animal
+ mixed practices*



E.I. Medical Imaging®



EVO® II

The latest, most advanced model in the IBEX® family, with significantly better image resolution, color-flow Doppler, remote control, improved features and remote image-viewing apps. EVO II is ideal for equine practices, companion animal practices, zoos, and anyone demanding a high-quality image in a robust system. Rugged, splash resistant, and highly portable, with a new line of variable frequency transducers, the EVO II is ready to go wherever you need it most. The IBEX EVO II also accommodates optional video headsets—perfect for viewing in bright sunlight or low light situations.

The next generation of the IBEX flagship platform, the IBEX EVO II provides image quality never before seen in a portable ultrasound this rugged. Improved image quality will allow the user faster and more accurate exams for any species.

At 6.4 pounds, the IBEX EVO II is designed to go anywhere, from an exam table in the clinic to cage-side to the barn. With field-swappable batteries you will no longer need to worry about the closest outlet.

With sealed keyboards and probe connections, the IBEX EVO II can go anywhere your work takes you.

FEATURES

- IBEX EVO II advanced imaging software
- 3x brighter display [1200 NITS]
- Full range of imaging modes: B, B+M, PD, Color, PWD available
- Ruggedized DuraScan® transducers 2-14 MHz
- Firmware updates to latest technology
- Fast boot time for more uptime
- Customized, veterinary-specific exam presets
- EVOSTream™ WiFi Remote Scanning app
- Bluetooth remote available
- Multiple headset options available
- 8.4 inch sealed, sunlight-readable LED Display
- Up to 3-hour battery time [field-swappable]
- Lightweight 6.4 lb [2.9 kg]
- DICOM compatible
- Full patient image management system
- FASTVet™ protocols [companion animal systems]
- 1-year warranty [up to 5-year warranty available]

Battery

- Field-swappable battery
- External battery charger docking station available [AC or car charger]
- 3 hours of continuous battery life

Transducers

- Cables designed and tested to withstand 1.2 million flex cycles
- Frequencies from 2 to 14MHz

Rugged

- EVOII is barn-ready rugged, designed for the harshest environments
- Sealed keyboard can be thoroughly cleaned for bio-security and clinic appeal
- All materials RoHS compliant

On-Board Help

- Context sensitive help at your fingertips
- Companion animal video protocols

EVOSTream™ WiFi Image Streaming

- Stream live studies directly to anyone with a mobile device
- Educational tool for image sharing
- Provides image viewing from a safe distance
- Client communication tool

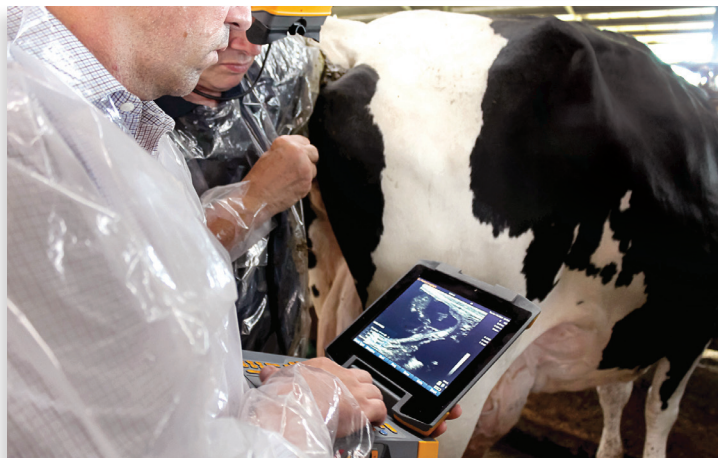
Bluetooth Remote

- User-defined programmable buttons
- Scan patients and control EVO II from a distance

User-Defined Adjustments

- Preset veterinary-specific exam types
- Customizable presets and annotations

FROM CLINIC TO BARN/FIELD/BOAT/ZOO



E.I. Medical has partnered with Drs. Gregory and Stephanie Lisciandro, creators of **FASTVet™**, to bring a new level of rapid diagnoses to the small animal practitioner.

FASTVET

FAST is an acronym for the abbreviated ultrasound examination called *Focused Assessment with Sonography for Trauma* created as a triage and post-interventional screening test by human trauma surgeons in the 1990s.

Abdominal FAST (AFASTSM), thoracic FAST (TFASTSM), Vet BLUESM, and Global FASTSM (GFAST) have been developed by **FASTVet** for veterinarians as rapid, point-of-care screening tests, that within minutes answer important clinical questions to help better direct both care and diagnostics in small animals.

These 3 techniques require no shaving of dogs and cats, minimal restraint, and serve as screening tests for Trauma, Triage and Tracking (monitoring)—thus the T3 designation.

These are truly practice-changers! You will quickly become a believer using these 3 techniques as extensions of your physical exam on a daily basis (the T3); and by capturing diseases, conditions and injuries with the use of AFAST, TFAST, Vet BLUE, and Global FAST (GFAST) that you would have traditionally missed or been delayed in dogs and cats of your valuable clients. As you will find, **FAST Saves Lives™!**



WHY FASTVET™ AND EVO® II?

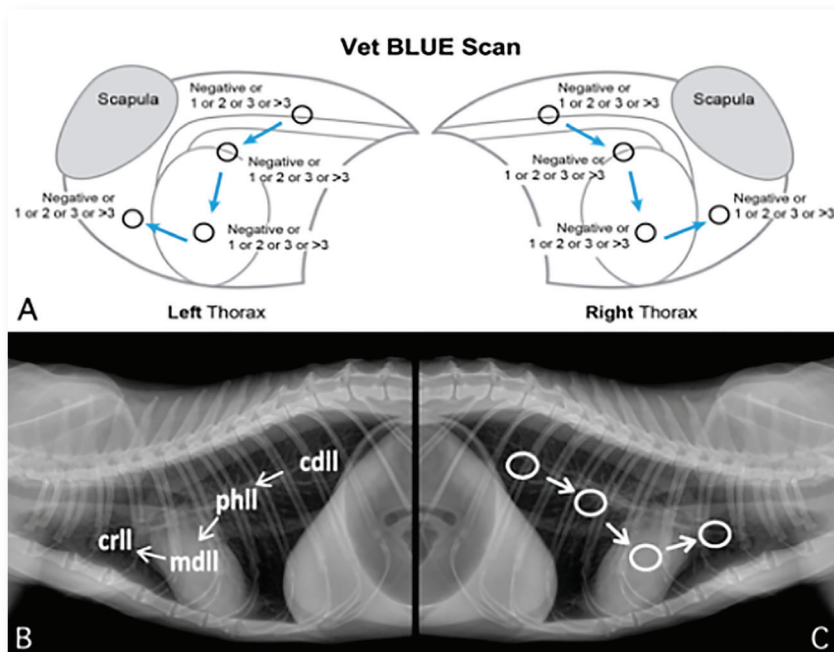
You should be using ultrasound **EVERY DAY** in your small animal practice!

With **FASTVet** techniques, you do not need to be an expert sonographer to be able to assess and monitor your patients. These are standardized, goal directed exams that you can readily use and implement in your practice. **FASTVet** techniques do not replace complete abdominal ultrasound and echocardiography (you can refer to an expert sonographer for those) but are additional ultrasound formats to assess your patients.

FASTVet techniques are valuable for patient care in general practice, emergency practice and specialty practice (all disciplines). You can learn these techniques quickly and use them in your practice **EVERY DAY**.

FASTVet, when used in conjunction with E.I. Medical Imaging's **EVO II** and the new **C6E** and **C9E** transducers, offers something that no other portable ultrasound does—rapid diagnostic protocols on a portable unit and probes designed specifically for small animal veterinarians.

Contact us at E.I. Medical Imaging for more information—866.365.6596/eimedical.com



EVO® II TRANSDUCERS



CL3E

Low-frequency, deep penetrating convex transducer

Transabdominal work in cattle, horses, small ruminants, camelids, large dogs, exotics/wildlife



CLi4HD

Side fire curved array [6–25 MHz], 24 cm depth

Bovine reproduction, large animal abdomen, exotics, small ruminant



L14X

High-frequency linear transducer

Equine tendons, small animal abdomens, neurovascular applications, superficial structure



C6E

Multi-frequency transducer, [4–9 MHz], 18 cm depth

Designed specifically for small animal use



C9E

Multi-frequency transducer, [5–10 MHz], 14 cm depth

Improved imaging, designed specifically for small animal use, i.e. cats, dogs



L7HD

Linear transducer [5–9 MHz], 15 cm depth.

Higher frequency, optimized focal position for reproductive exams. Bovine and equine reproduction, tendon and lung.



L3ASE

Linear transducer
Bovine carcass merit



C90PU-HD

Ovum pickup probe and handle [5–10 MHz], 14 cm depth

Adjustable handle, shallower focus for better imaging; small height, lightweight

Improved positioning of transducer array and needle exit
Equine and bovine

A WORD ABOUT OUR CABLES...

All IBEX® cables are tested to 1.2 million flex cycles:

- Polyurethane cable jacket is extremely durable, chemical resistant and biocompatible per USP Class VI
- Copper alloy coax and copper alloy tinsel shield developed for controlled elongation
- Kevlar strength members embedded in cable bundle to protect coax breakage
- All materials RoHS compliant

...and our transducers

All our transducers are designed specifically for rugged environments. But if the worst happens, they can be repaired, too!

And we listen to you...we had multiple requests to re-design the MC80PU head and handle for ease of use.

The result is the C90PU-HD!

The C9E is also new, honed to produce an improved image for the smallest of small animals.

PROBE ACCESSORY



I.C.E.®

The Ibex® Customizable Extension lessens fatigue and stress on the user's arm and shoulder.

The I.C.E. extension allows easy insertion or removal of the probe [compatible with L6E, L7HD, CLi3E, CLi4HD transducers]

ACCESSORIES

i3 LED GOGGLES

The i3 LED goggles are small, lightweight and compatible with all IBEX® veterinary ultrasound models as well as with Bantam and Easi-Scan [models 1-4].

They come with versatile mounting options: ratcheted headband, head strap and hat clip. Also included are detachable glare shields to block sunlight.

Custom designed optics

- LCD display with LED backlight
- half the weight of InSite2
- specially designed eye cups for inside and outdoor viewing
- GoPro mount
- 1-year warranty [warranty extensions available]



OTHER ACCESSORIES



IBEX® Waist Pouch

- accommodates the EVO®/EVO® II [in closed position]
- keeps unit self-contained and streamlined when scanning with headset



EVO Remote

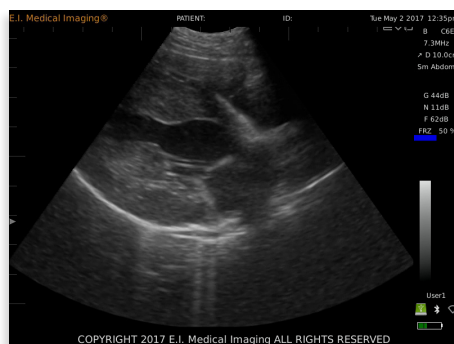
- Bluetooth connection—auto connects once paired with an EVO/EVOII
- 7 keys can be reassigned to any key on an EVO or EVOII for versatility
- use to control gain, depth, save and record images, or other custom features



EVO Sun Shade

- magnetic shade snaps on to the EVO/EVO II screen to allow easy viewing in bright conditions

GALLERY



E.I. MEDICAL IMAGING

E.I. Medical Imaging® was founded in 1984 with the vision of developing a state-of-the-art, real-time ultrasound scanner to serve veterinarians and livestock producers world-wide.

Our products have evolved with the needs of the market. We are proud to be the only manufacturer of portable ultrasound systems engineered and developed in the United States specifically for the animal industry.

For over 30 years, the company's core values have remained intact: putting the customer first and delivering solid, effective ultrasound solutions. Today we are a world leader in the durable, portable, veterinary ultrasound industry.

CONTACT US

E.I. Medical Imaging
110 12th St. SW, Unit 102
Loveland, CO 80537-6396
toll-free/1.866.365.6596
phone/970.669.1793
fax/970.669.1902
www.eimedical.com



EDUCATION

EIMI is committed to education. From online learning resources to classroom and wet lab training experiences, we are here to ensure that you get the most out of your ultrasound equipment. Our on-staff veterinarian and sales team are always available to assist you as you put your IBEX® system to work.

EIMI is also involved in educating future veterinarians, and offers two specific programs toward that end:

- EIU™ Student Externship Program—EIMI provides ultrasounds on loan to vet students for externship experiences. Contact us for more information.
- EIU™ Seminars—EIMI hosts ultrasound seminars at veterinary schools and in the field, comprising a short introductory lecture and hands-on wet labs. Please contact us to schedule.

CUSTOMER SUPPORT/LOANER PROGRAM

Downtime is not in the vernacular at E.I. Medical Imaging®—service is the hallmark of our business. We engineer systems specifically for veterinary use and understand the challenges downtime brings. With industry-leading service turnaround times and a free loaner program, we ensure continuity of your business. All service is conducted at our EIMI facility in Loveland, Colorado, using only genuine EIMI parts.