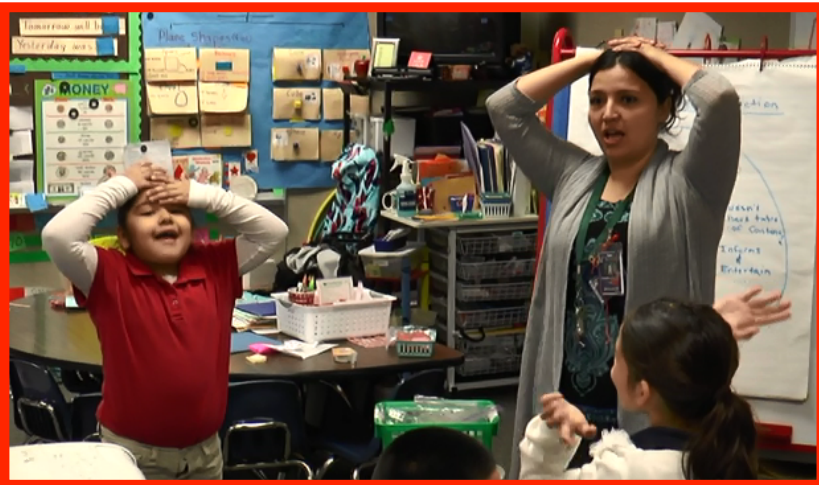


# ABL in Action in Alief ISD

## 2014-2015



- ▶ Action Based Learning Labs are currently at 10 campuses
- ▶ Kinesthetic chairs (wobble stools, balls, etc) at several campuses
- ▶ Kinesthetic desks at Best Elementary
- ▶ Two campuses are adding intervention labs this year.
- ▶ All campuses should be implementing classroom activity.

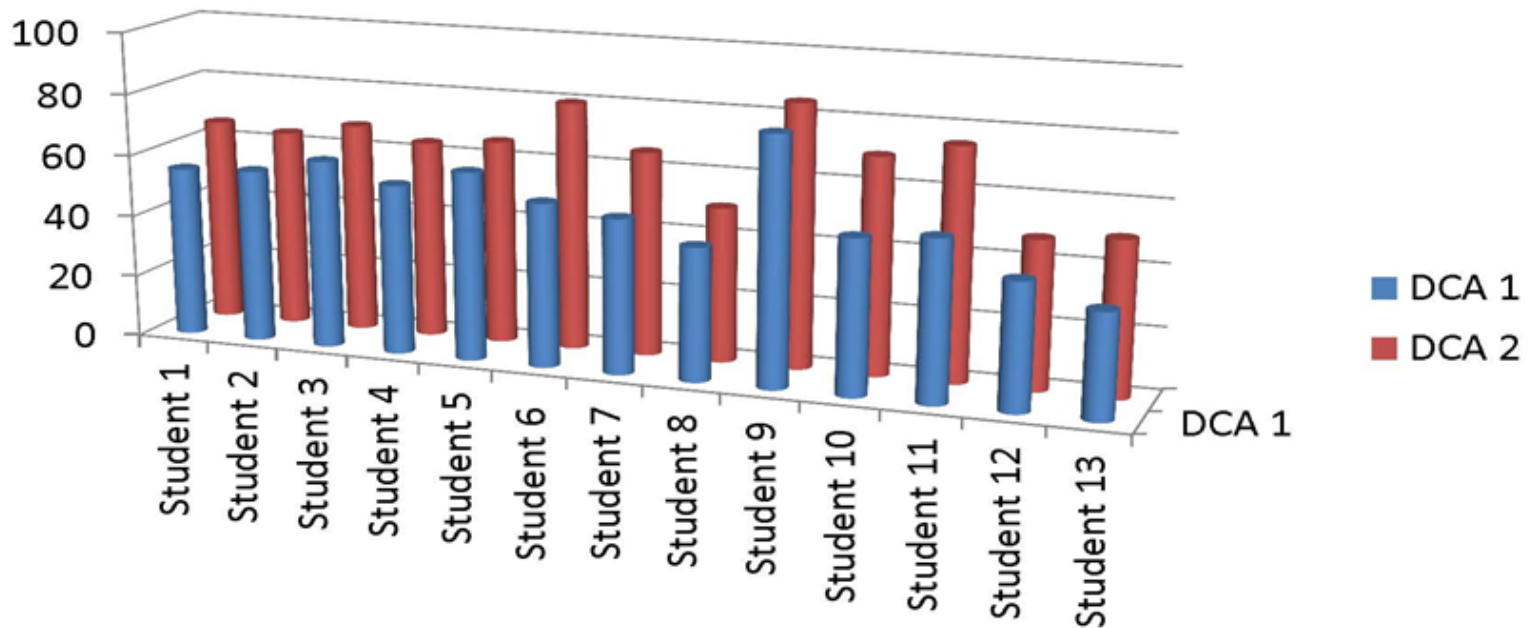




# Best Elementary Discipline Data

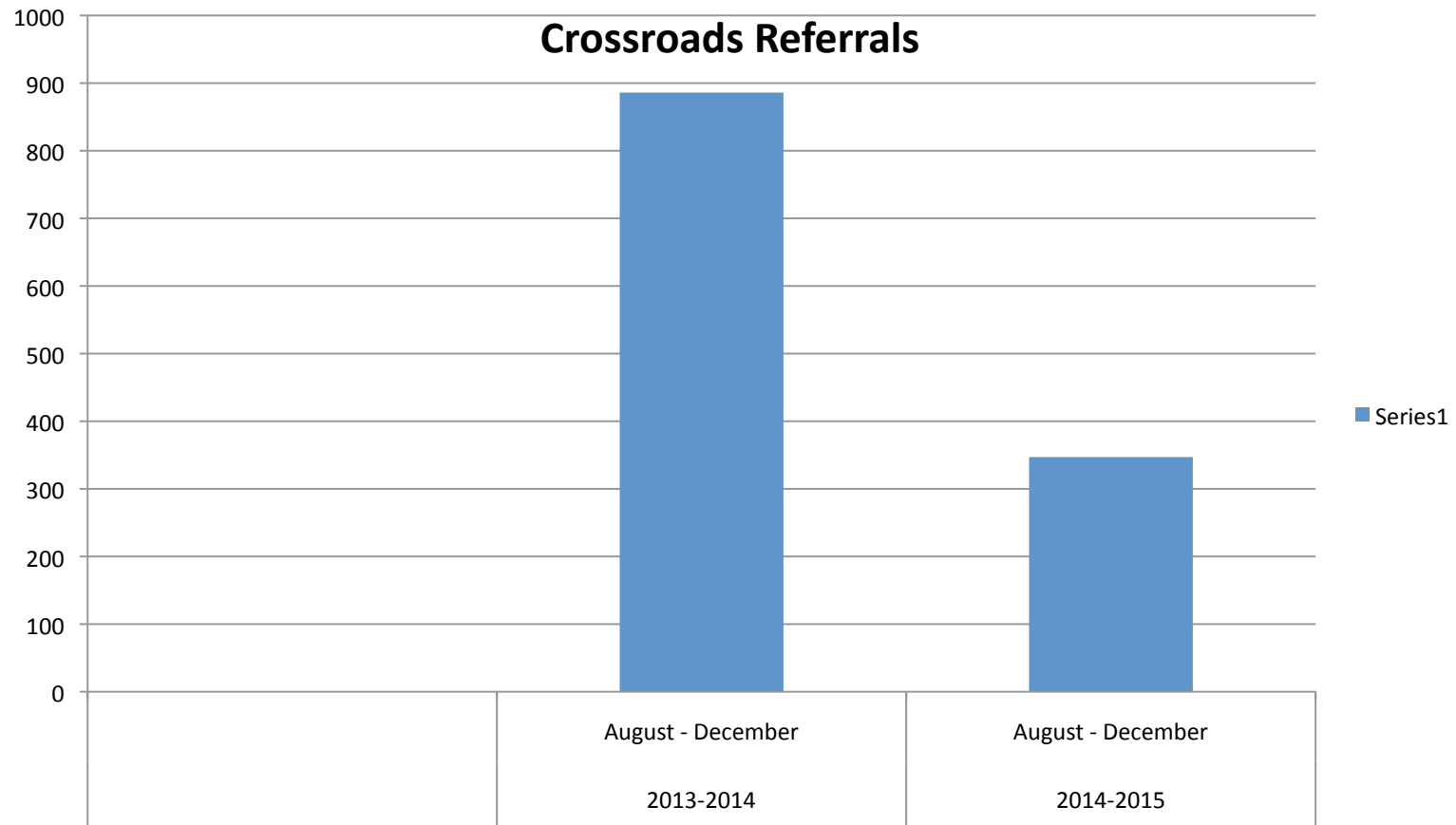
	Quarter 1			Quarter 2			
Grade Level	Total # of Students	Total # of Referrals	%	Total # of Students	Total # of Referrals	%	Difference
Kindergarten	161	14	8%	161	3	2%	Decrease of 6%
First	154	37	24%	152	18	12%	Decrease of 12%
Second	150	38	25%	142	25	18%	Decrease of 7%
Third	154	19	12%	155	5	3%	Decrease of 9%
Fourth	160	51	32%	163	28	17%	Decrease of 15%
Campus Totals	897	159	18%	898	79	9%	Overall decrease of 50%

# Heflin Elementary Reading Intervention



Students attend ABL 4-5 days a week for 30 minutes. Chart above shows growth from DCA1 (Dec.3) to DCA2 (Mar. 4) with Interventions beginning January 12,2015.

# Crossroads DAEP Data August – December 2014

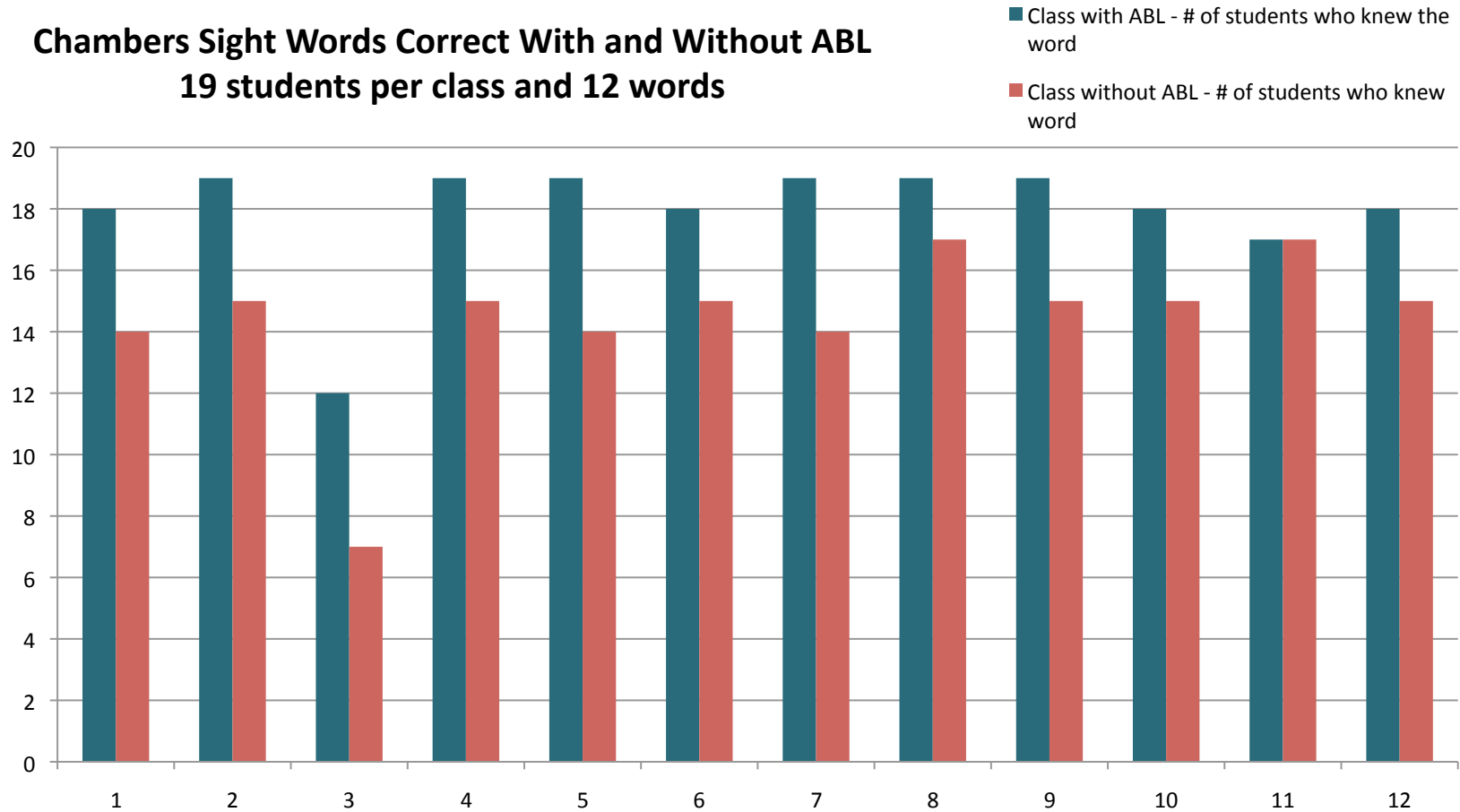


# Crossroads Classroom Data

- ✓ **Higher passing rates – 79% as of Dec.**
- ✓ **More Brain Room hours the higher the grade point average of the student.**
- ✓ **Fewer referrals, fewer fights**
- ✓ **Even with 5 days out of the class – still on target with district pacing guide.**
- ✓ **Better relationships with students.**

# Chambers Elementary Sight Words

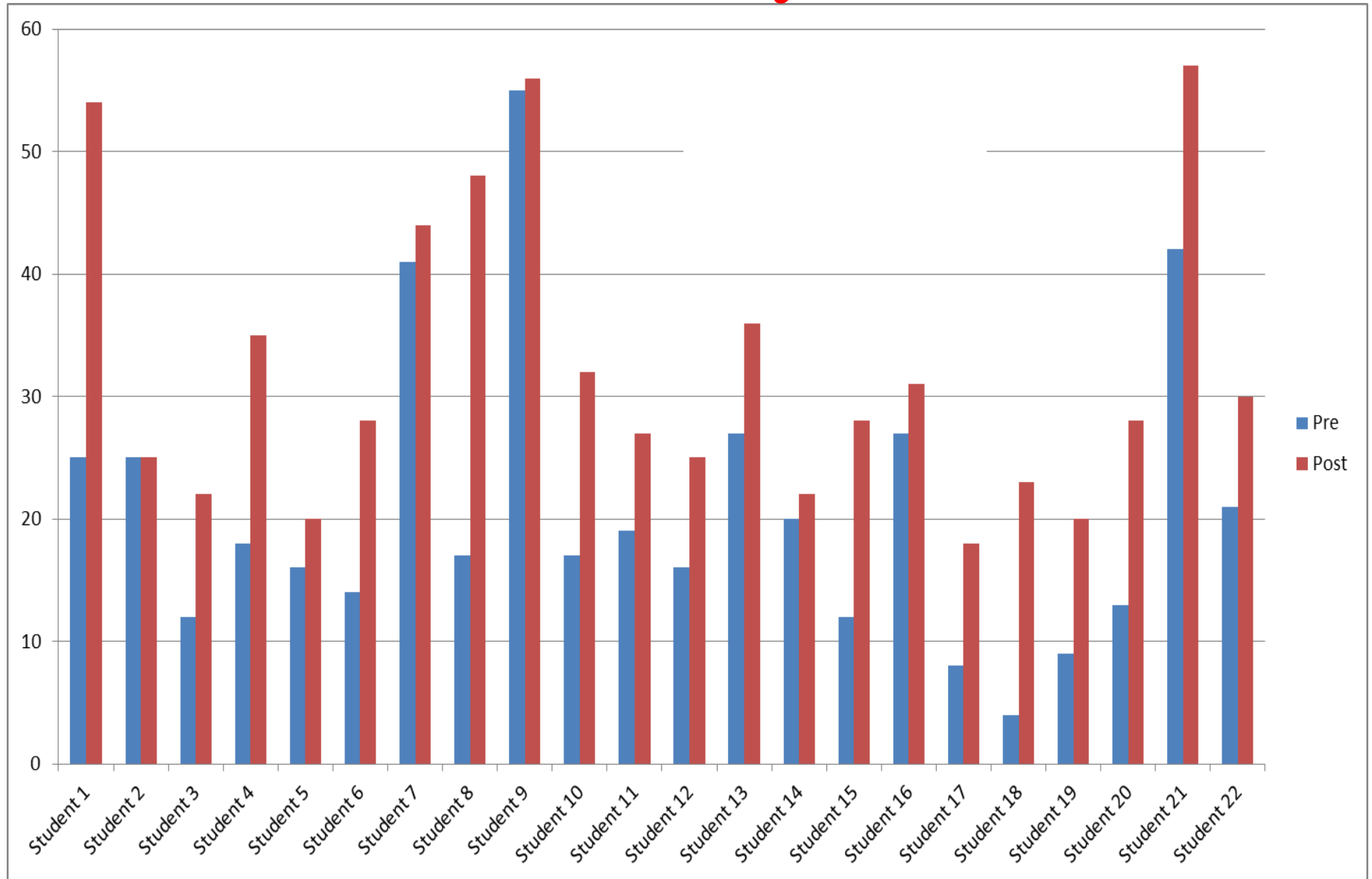
**Chambers Sight Words Correct With and Without ABL**  
**19 students per class and 12 words**







# Martin Elementary Math Facts



# Cummings Elementary Math Data

Cummings 3<sup>rd</sup> grade focused on practicing Math in the ABL lab

	STAAR 2012	STAAR 2013	STAAR 2014	STAAR 2015	Change
3rd	51	54	52	76	+24
4th	60	55	51	61	+10

- Top campus for growth in 3<sup>rd</sup> and top 3 for 4<sup>th</sup>
- Above district average in 3<sup>rd</sup> grade and 5<sup>th</sup> highest in the district