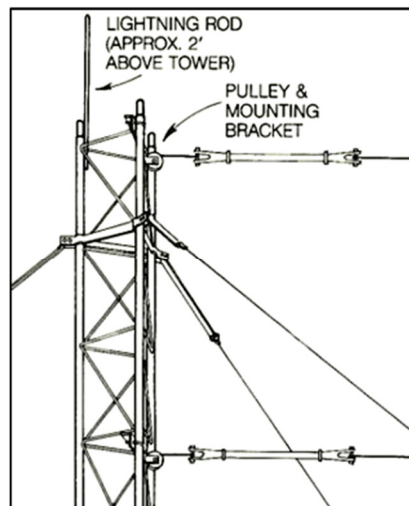
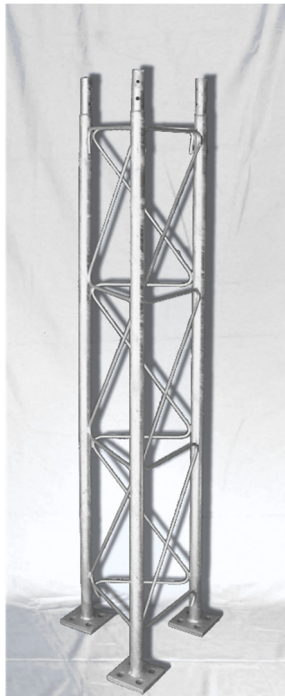




Support Towers - Symmetrical "T" Antennas

SPECIFICATION SHEET

5055 Belmont, Beaumont, TX 77707
 Phone +409.842.1717
 Fax +409.842.2987
 sales@southernavionics.com



Application:

SAC support towers are made for use with SAC Symmetrical "T" Antennas.

Mechanical:

Supports are made of galvanized steel ROHN 25G® 10 ft. (3m) tower sections. Each section is an equilateral triangular lattice design configured with 12.5 in. (32cm) cross bracings electrically-welded to heavy duty 1.25 in. (3.1cm) steel tubing side rails.

Earth anchors and hardware included.

Symmetrical "T" Antenna Supports	P/N	Number of Lattice Sections	Number of Guy Wires
30 ft.	SLF10067	6	1
60 ft.	SLF10020	12	2
90 ft.	SLF10031	18	3
120 ft.	SLF10050	24	4

FEATURE	SPECIFICATION
Wind Load	130 mph (209km/hr)
Ice Rating	0.4 in. (1cm), surface area
Guy Wires	3/16 in. (0.48cm) galvanized extra heavy strength (EHS) wire, breaking strength in excess of 4000 lbf. (18kN)

*Information provided subject to change without notice