

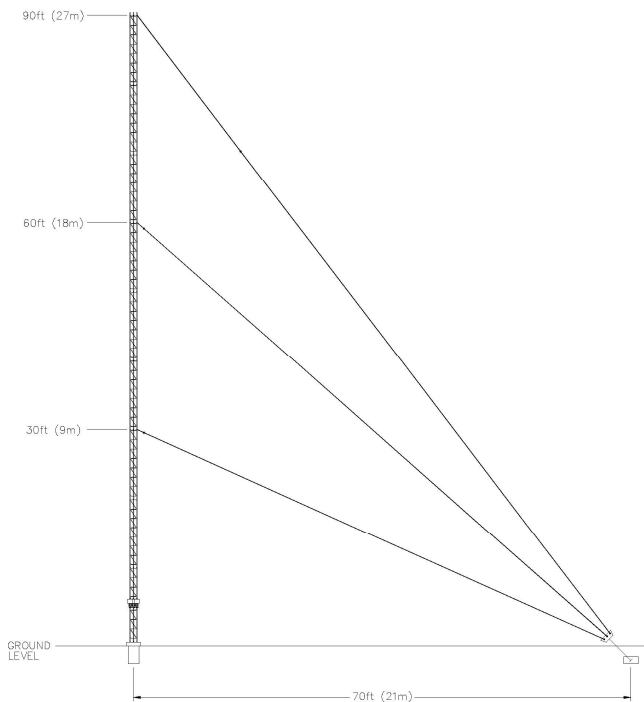


90 ft. Mast Antenna

Part Number: SLF10005

SPECIFICATION SHEET

5055 Belmont, Beaumont, TX 77707
 Phone +409.842.1717
 Fax +409.842.2987
 sales@southernavionics.com



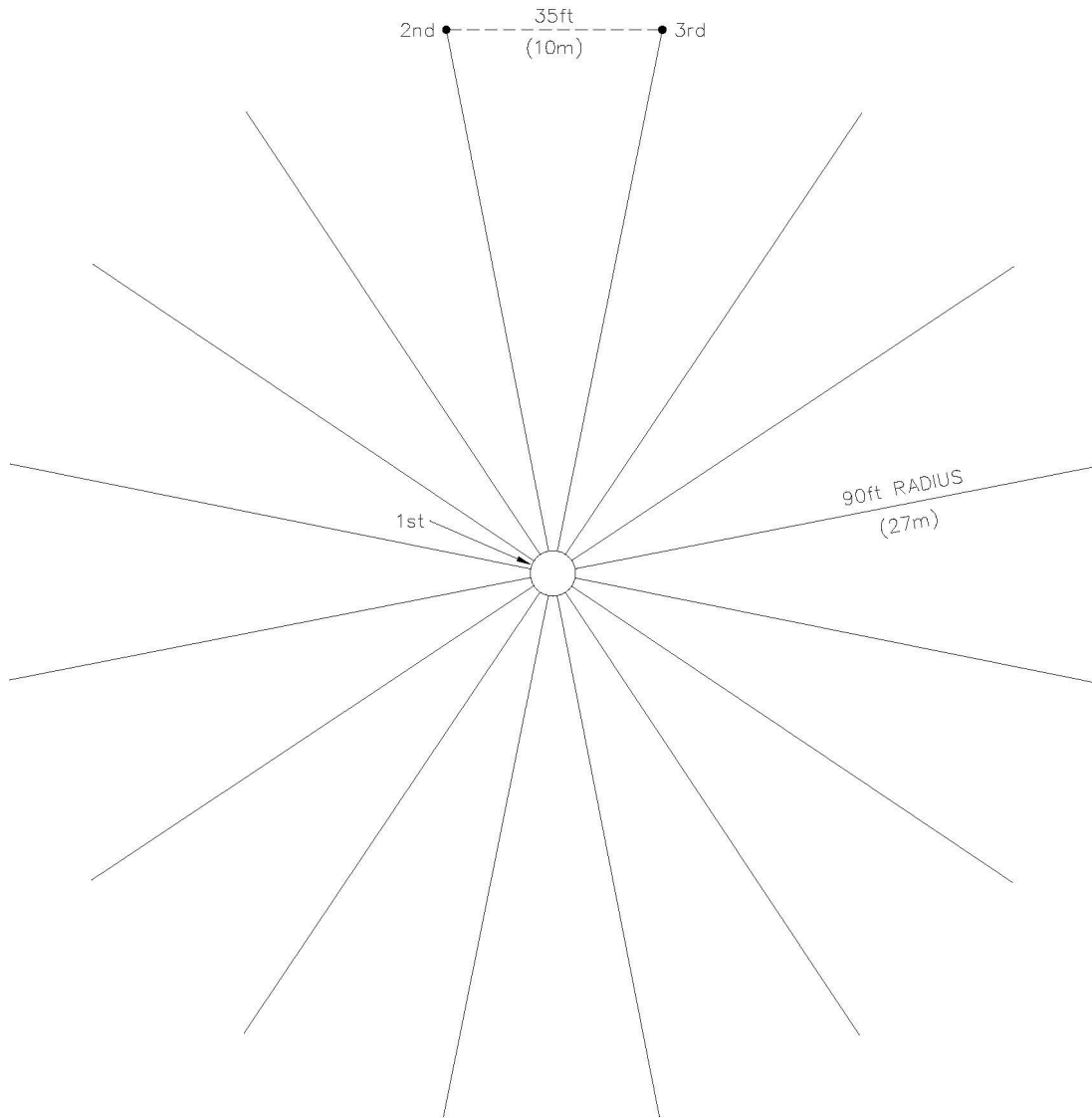
*Information provided is subject to change without notice

| FEATURE | SPECIFICATION |
|-------------------------|--|
| Resistance | 2-30 Ohms, 10 Ohms typical |
| Max Power Rating | 4000 Watts PEP / 1000 Watts carrier power at 100% amplitude modulation |
| Capacitance | 709 pF standard |
| Frequency of Operation | 190-650 kHz |
| Polarization | Vertical |
| Pattern | Omni-directional |
| Antenna Gain | -5.75 dBi@ 300 kHz |
| Electrical Length | 70.2 ft. (21.4m) |
| Wind Rating | 130 mph (209km/hr) |
| Height | 90 ft. (27.4m) |
| Weight | 690 lbs. (312kg) |
| Sections | Eight (8) 10ft. (3m) sections, Two (2) 5ft. (1.5m) RF insulator sections |
| Finish | Galvanized steel to ASTM A123 |
| Temperature Range | -50°C - +70°C |
| Base Pier Rating | 14000 lbf. (62275N) |
| 16 Radial Ground System | 1500 ft. (335m) of #10 AWG soft-drawn copper wire, 17 6 ft. (2m) ground rods, ground clamps, associated hardware |
| Optional Equipment | Installation Kit, Antenna Simulator, Enhanced Counterpoise SLF87730, Obstruction LED kit SLJ00205 |

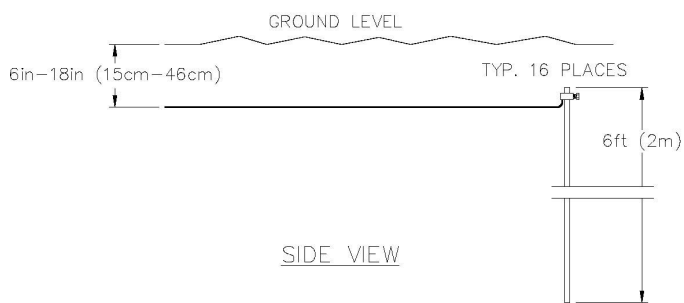
Mechanical:

The antenna is made of 8, 10 ft. (2m) galvanized steel sections configured on 12.5 in (32cm) equilateral triangular design with electrically welded continuous steel “zigzag” cross bracing. 2, 5 ft. (1.5m) RF insulator sections are also provided. The lattice tower sections are designed in accordance with U.S. National Standard ANSI/EIA-222 F.

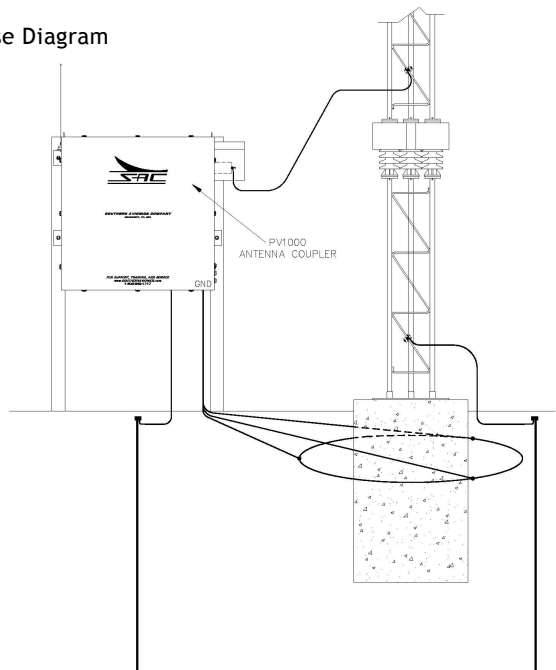
Three (3) high voltage insulators are used to isolate the radiator from the ground. Rain shields are included to prevent water sheeting during heavy rain. Three top-loading guy wires are used to develop and enhance antenna capacitance.

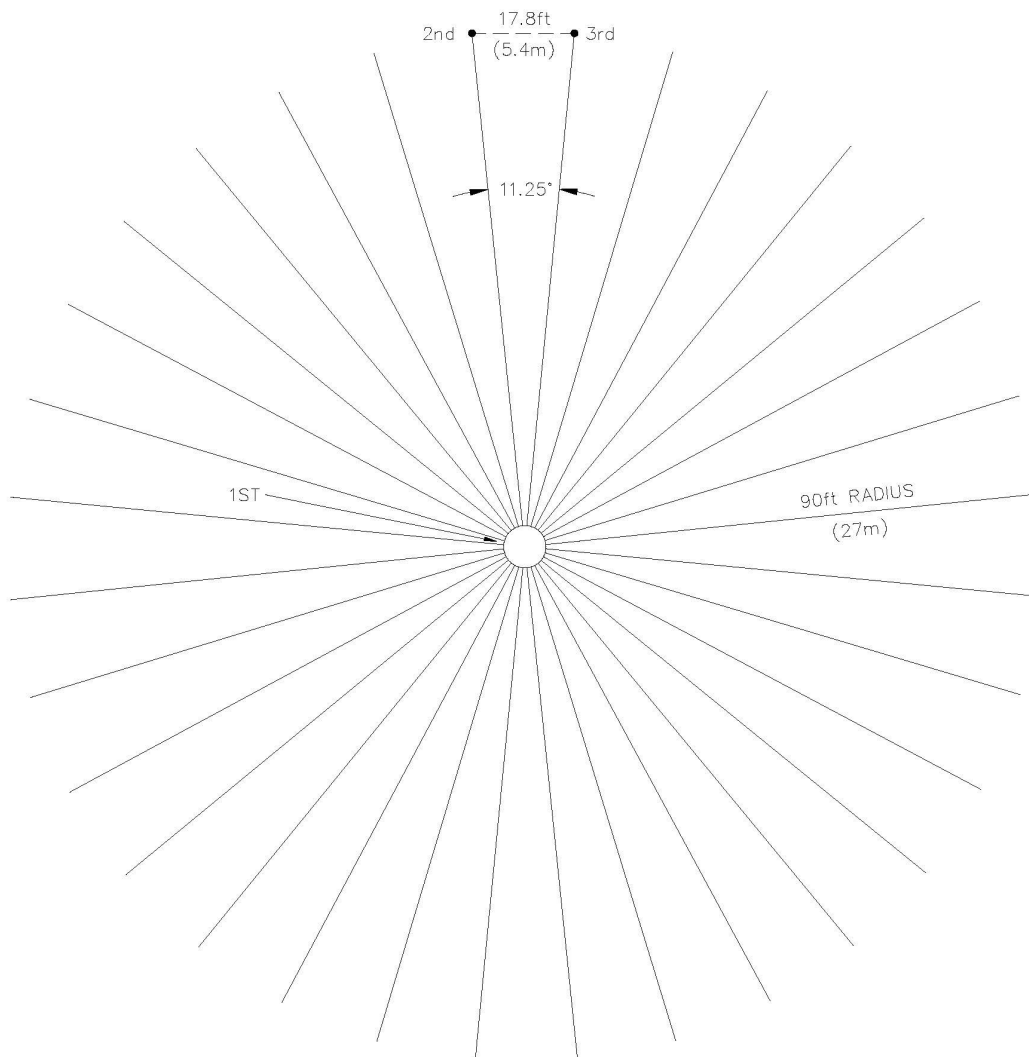


16 Radial Counterpoise Diagram

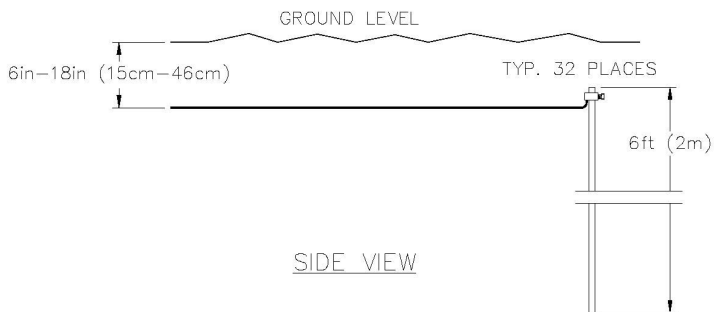


SIDE VIEW





32 Radial Counterpoise Diagram



Application:

Sixteen (16) radials are generally adequate for "normal" soil, but in cases of poor ground conductivity, the number of radials can be doubled by using option SLF87730 which will double the number of radials to 32.